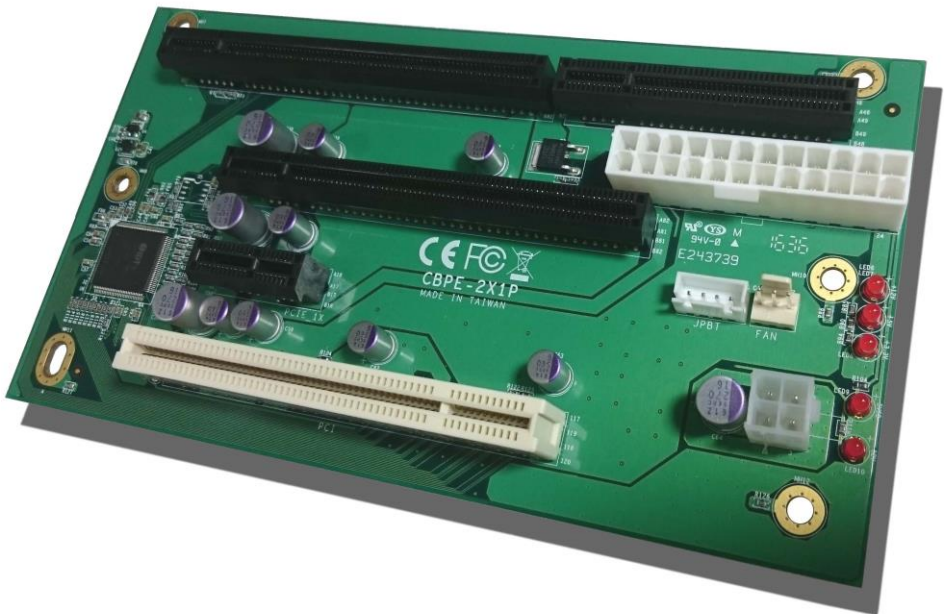


CBPE-2X1P

PICMG1.3 Half-size Backplane

User's Manual

Edition 1.0
2016/11/04



Copyright

Copyright 2016, all rights reserved. This document is copyrighted and all rights are reserved. The information in this document is subject to change without prior notice to make improvements to the products.

This document contains proprietary information and protected by copyright. No part of this document may be reproduced, copied, or translated in any form or any means without prior written permission of the manufacturer.

All trademarks and/or registered trademarks contains in this document are property of their respective owners.

Disclaimer

The company shall not be liable for any incidental or consequential damages resulting from the performance or use of this product.

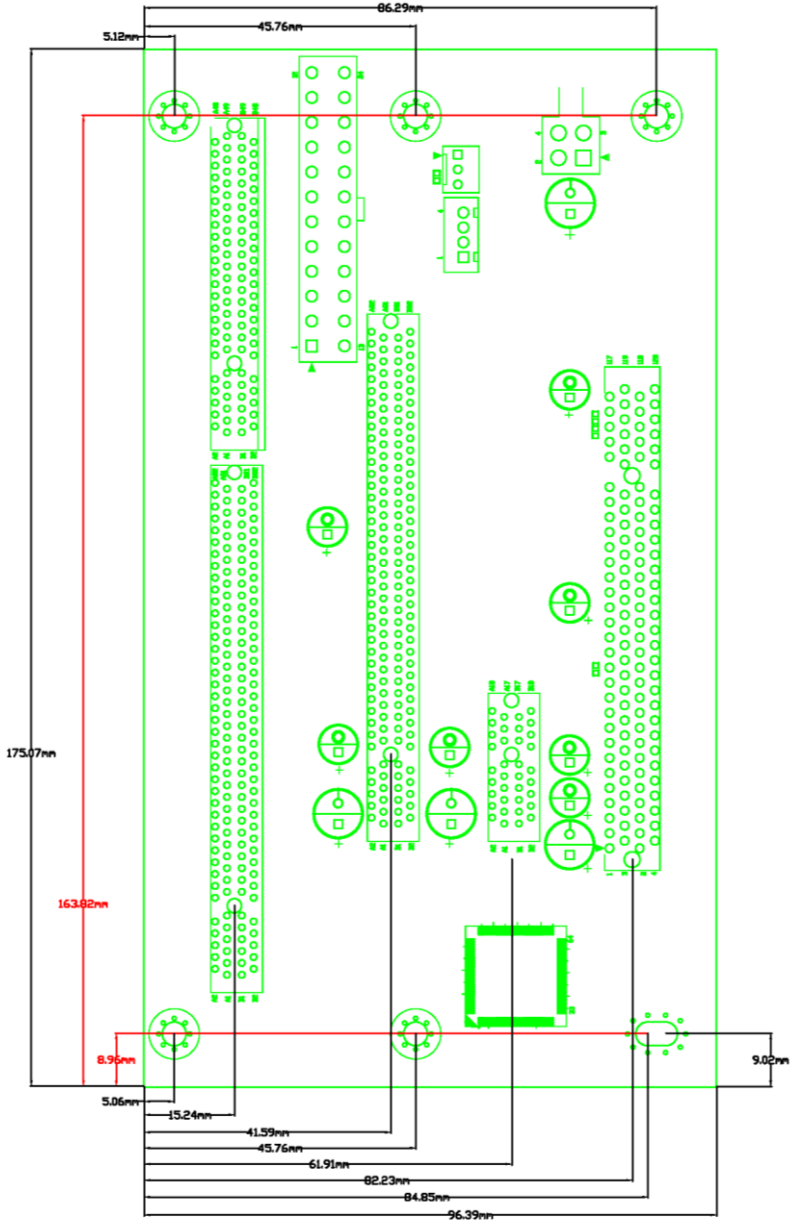
The company does not issue a warranty of any kind, express or implied, including without limitation implied warranties of merchantability or fitness for a particular purpose.

The company has the right to revise the manual or include changes in the specifications of the product described within it at any time without notice and without obligation to notify any person of such revision or changes.

Trademark

All trademarks are the property of their respective holders.

Any questions please visit our website at <http://www.commell.com.tw>



<Product Specification>
General Specification

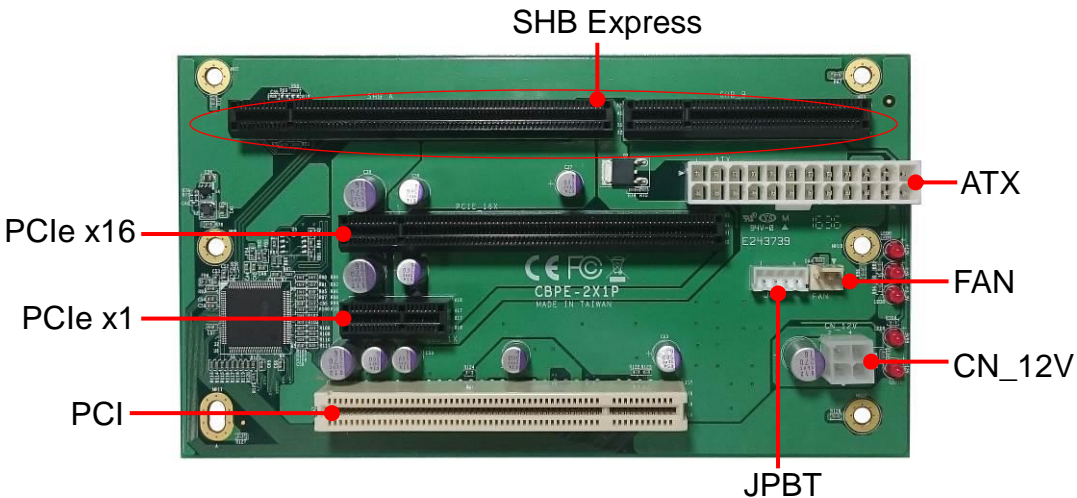
Form Factor	PICMG1.3 Half size Backplane
Extended Interface	1 x PCIe x16 slot, 1 x PCIe x1 slot, 1 x PCI slot
Power Requirement	Standard 24-pin ATX power supply
Dimension	175.07 x 96.39 mm

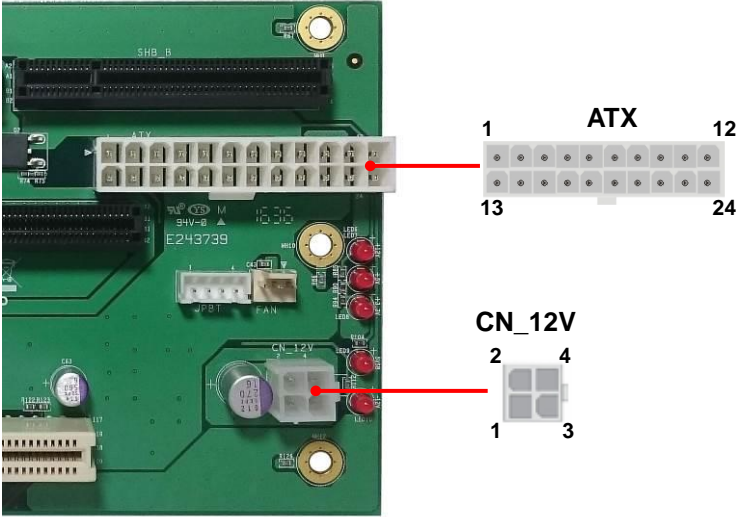
The specifications may be different as the actual production.

For further product information please visit the website at <http://www.commell.com.tw/>

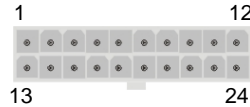
<Connectors list>

Connector	Function
SHB Express	SHB PICMG 1.3 Half-SIZE SBC Slot
PCIe x16	164-pin support PCIe x16 slot
PCIe x1	36-pin support PCIe x1 slot
PCI	120-pin PCI slot
CN_12V	ATX12V connector auxiliary power support
ATX	20+4-pin main power connector
JPBT	Power , Reset button connector
FAN	3-pin fan connector



< Power Input >

Connector: ATX
Connector Type:

Main power 24-pin connector

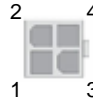


Pin	Signal	Pin	Signal
1	3.3V	13	3.3V
2	3.3V	14	-12V
3	GND	15	GND
4	5V	16	PSON
5	GND	17	GND
6	5V	18	GND
7	GND	19	GND
8	POWER_OK	20	-5V
9	5VSB	21	5V
10	12V	22	5V
11	12V	23	5V
12	3.3V	24	GND

Connector: CN_12V

Connector Type:

12V 4-pin connector



Pin	Signal	Pin	Signal
1	GND	2	GND
3	12V	4	12V

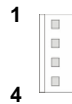
“CN_12V” for increase the input current.

< Power Switch & FAN >

Connector: JPBT

Connector Type:

Panel Switch 4-pin header



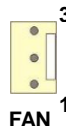
JPBT

Pin	Signal
1	Power Button
2	GND
3	Reset
4	GND

Connector: FAN

Connector Type:

Cooler fan 3-pin header



FAN

Pin	Signal
1	GND
2	12V
3	N/A

Contact information

Any advice or comment about our products and service, or anything we can help you please don't hesitate to contact with us. We will do our best to support you for your products, projects and business.

Taiwan Commate computer Inc.

Address	19F., NO.94, Sec. 1, Xintai 5 th Rd., Xizhi Dist., New Taipei City 22102, Taiwan.
TEL	+886-2-26963909
FAX	+886-2-26963911
Website	www.commell.com.tw
E-mail	info@commell.com.tw (General information) tech@commell.com.tw (Technical Support)

Commell is a brand name of Taiwan Commate computer Inc.