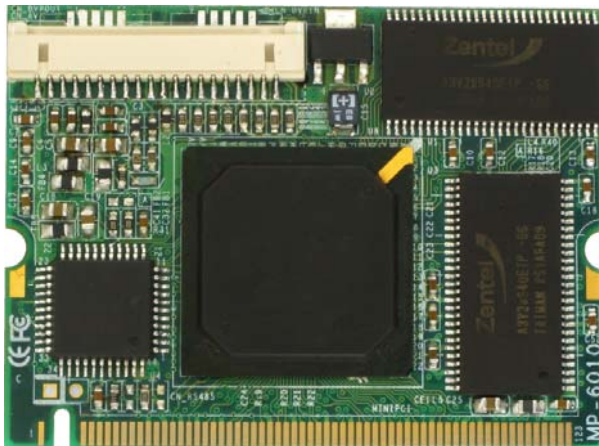


MP-60102

User's Manual

Edition 1.0

2010/03/23



Copyright

Copyright 2010 all rights reserved. This document is copyrighted and all rights are reserved. The information in this document is subject to change without prior notice to make improvements to the products.

This document contains proprietary information and protected by copyright. No part of this document may be reproduced, copied, or translated in any form or any means without prior written permission of the manufacturer.

All trademarks and/or registered trademarks contains in this document are property of their respective owners.

Disclaimer

The company shall not be liable for any incidental or consequential damages resulting from the performance or use of this product.

The company does not issue a warranty of any kind, express or implied, including without limitation implied warranties of merchantability or fitness for a particular purpose.

The company has the right to revise the manual or include changes in the specifications of the product described within it at any time without notice and without obligation to notify any person of such revision or changes.

Trademark

All trademarks are the property of their respective holders.

Any questions please visit our website at <http://www.commell.com.tw>.

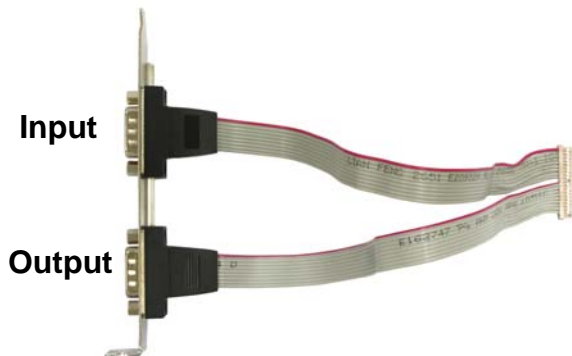
Packing List:

Hardware:

MP-60102 Mini-PCI Capture Card x1

Cable kit:

DF14 to dual D-SUB 9 Cable x 1
(OAL2DB9-H20)



4 Channel video and audio input Cable x 1
(OALDB9-BR4)



**Video and Audio output Cable x 1
(OALAVE)**



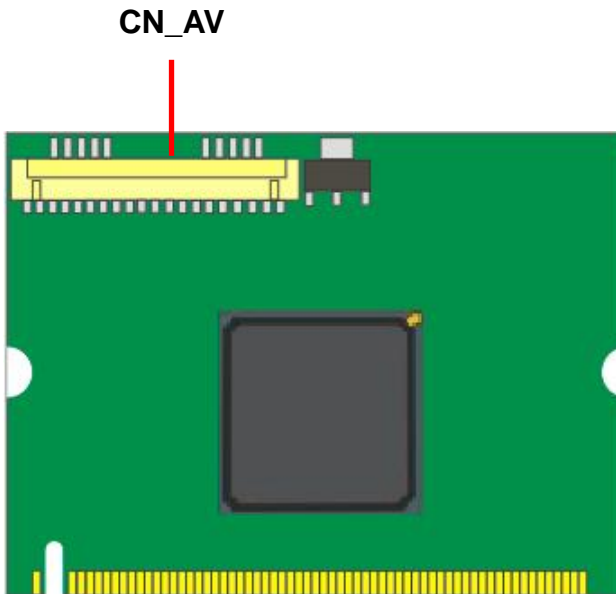
CD Content:

Drivers & User's Manual

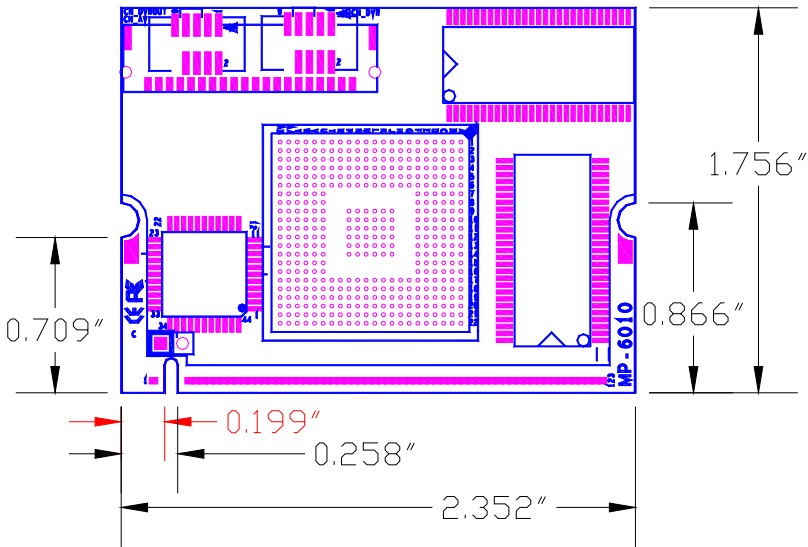
1.0 <Product Specification>

General Specification	
Form Factor	Mini-PCI Type III B with 124-pin interface
Video Decode Chipset	Softlogic solo6110-4
Accessories	1 x DF14 to dual D-SUB 9 Cable 1 x 4 Channel video and audio input Cable 1 x video and audio output Cable
Features	H.264 hardware compression Video Capture Card 4 Channel Video & Audio inputs MAX resolution: NTSC at 704*480 PAL at 704*576

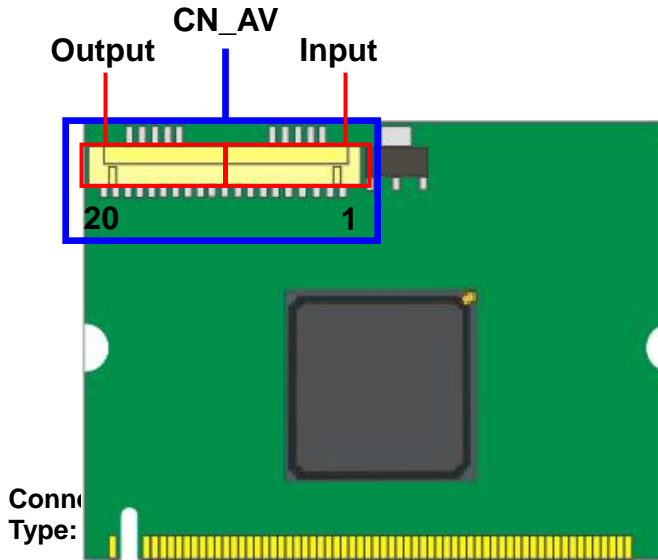
1.1 <Component Placement>



1.2 <Mechanical Drawing>



1.3 <Connector Reference>



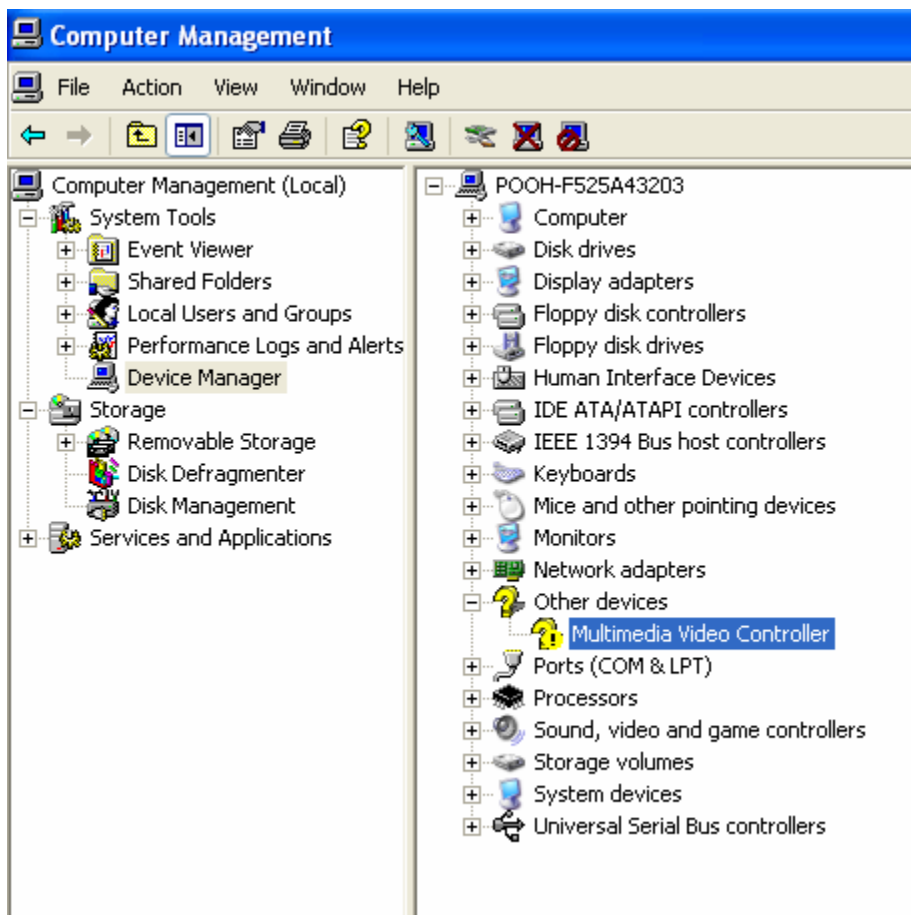
Pin	Description	Pin	Description
1	P_VI_CH1	11	OUTGND
2	P_VI_CH2	12	CVBS_OUTB
3	P_VI_CH3	13	OUTGND
4	P_VI_CH4	14	Y_OUTB
5	INGND	15	OUTGND
6	P_AI_CH1	16	C_OUTB
7	P_AI_CH2	17	OUTGND
8	P_AI_CH3	18	AUDIOL_OUT
9	P_AI_CH4	19	AUDIOR_OUT
10	INGND	20	OUTGND

1.4 <Driver Setting>

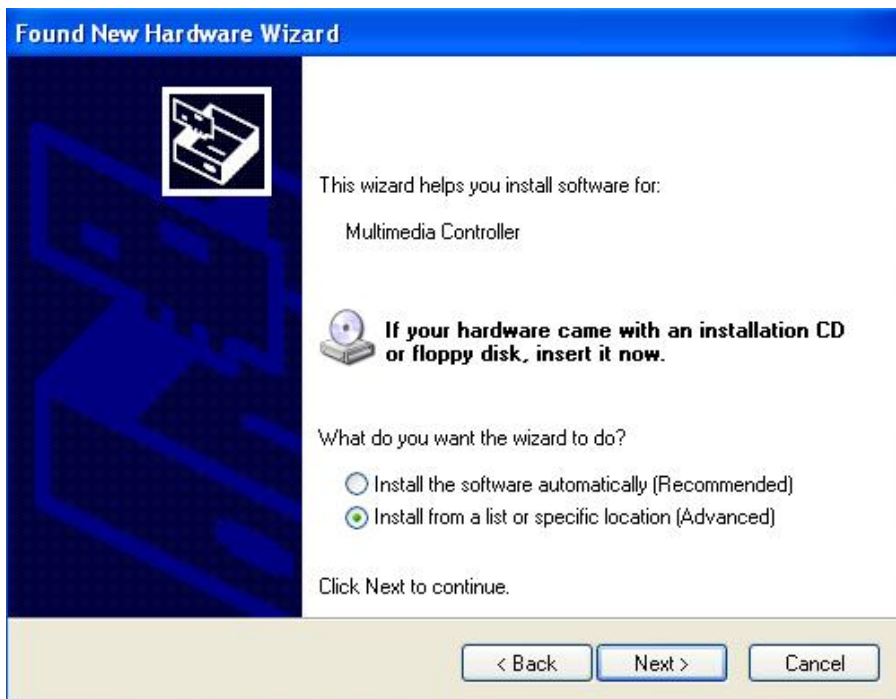
1. Copy the CD Driver folder to disk, Ex: C:\ , D:\ ...

2. Please choose **Device Manager**

And then you can see **other devices**

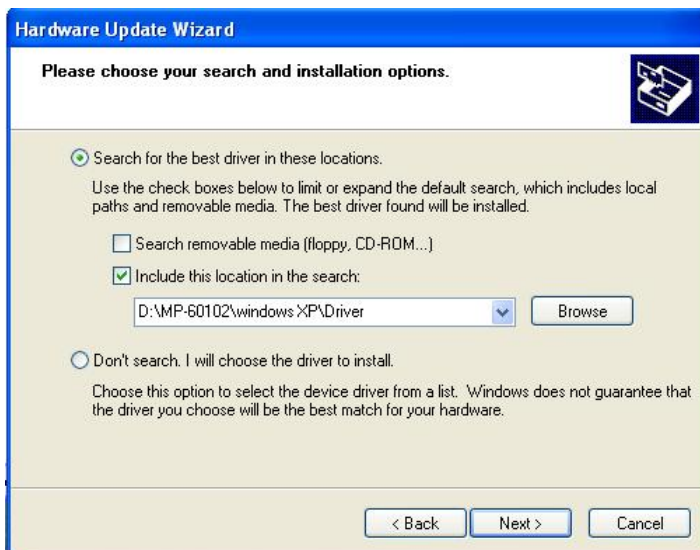


3. Please choose **Multimedia Controller** and press **advanced**

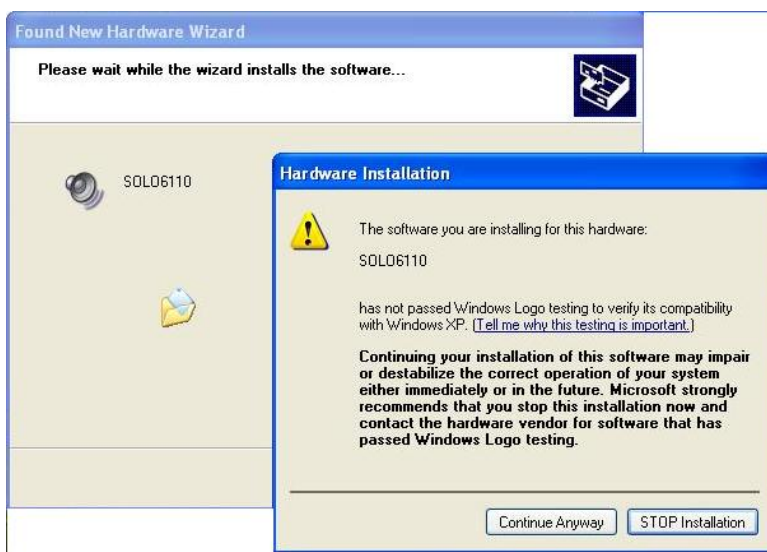


4. Please select file location

D:\MP-60102\WindowXP\Driver



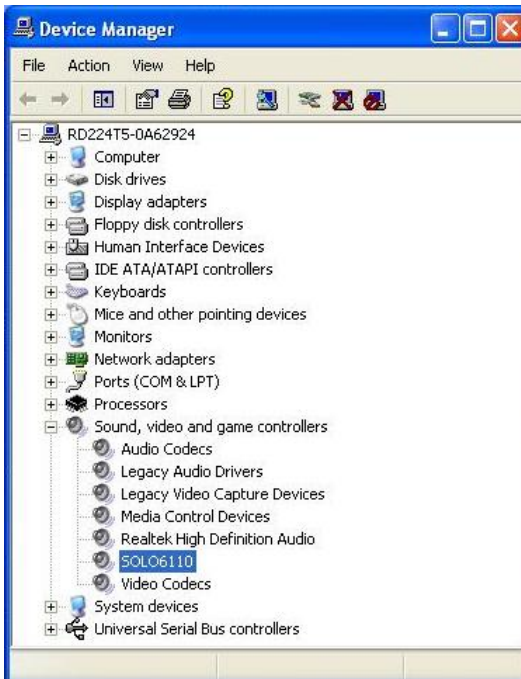
5. Please press **continue anyway**



6. Press Finish



7. Driver install succeed

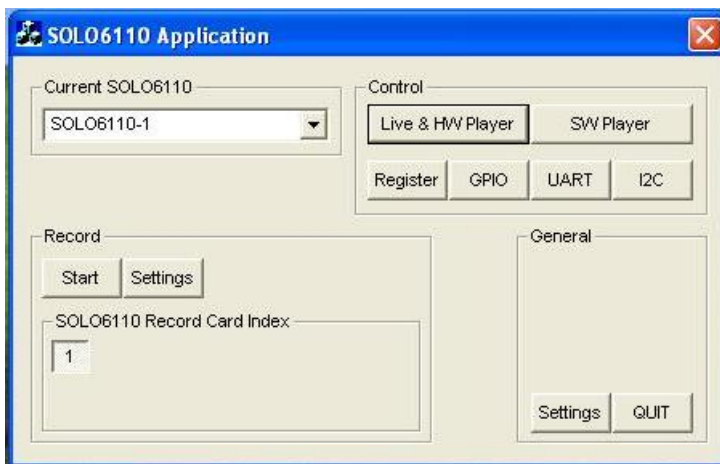


1.5 <Application Setting & Functions>

1. Please select SDK location

D:\MP-60102\WindowXP\SDK

Then press SOLO6110App



2. Press General Setting

Live Display Mode select

5. Memory to Overlay , 60 field/sec or

6. Memory to Overlay , 30 frame/sec

VGA Card select Intel Onboard VGA



3.Main Function

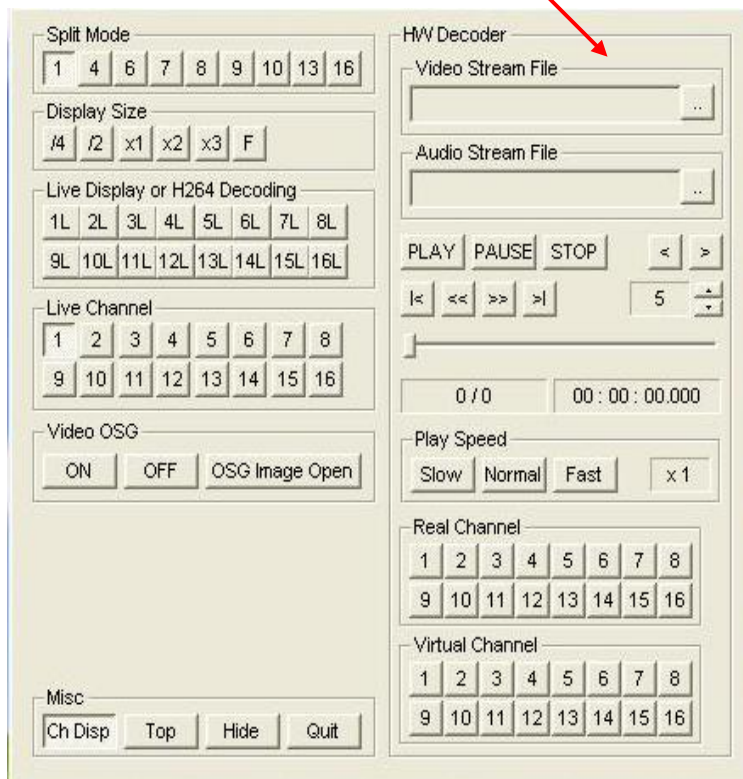
A. Live & HW player

The live display and hardware player can be tested using this function

Load file

video → RH2_xxx.slf

audio → RG7_xxx.slf

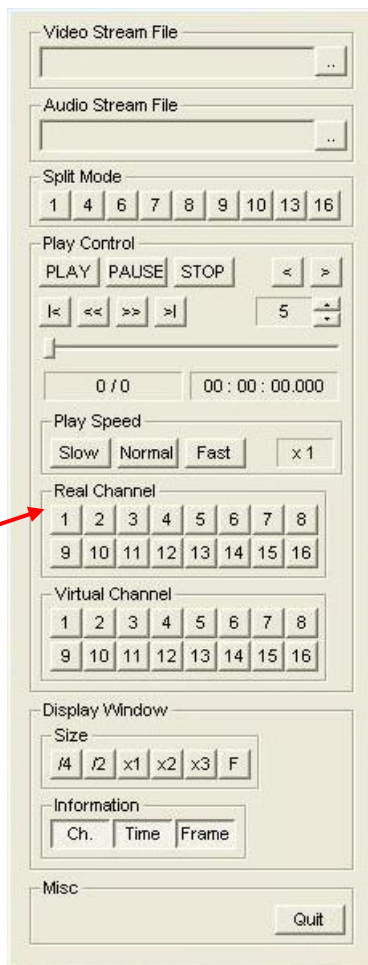


B. SW player

The recorded H.264 file can be played back using this function

Select audio channel

The audio played back only one channel



Record setting

FPS → 60 FOR test

Video channel

audio channel

Record Setting Dialog

Video

Real Channel Virtual Channel

H264

	Quality	GOP	Img. Size	FPS	Bitrate	CBR Buffer
All		0				
1	10	15	704x480 Frame	10	VBR	5 sec
2	10	15	704x480 Frame	10	VBR	5 sec
3	10	15	704x480 Frame	10	VBR	5 sec
4	10	15	704x480 Frame	10	VBR	5 sec
5	10	15	704x480 Frame	10	VBR	5 sec
6	10	15	704x480 Frame	10	VBR	5 sec
7	10	15	704x480 Frame	10	VBR	5 sec
8	10	15	704x480 Frame	10	VBR	5 sec
9	10	15	704x480 Frame	10	VBR	5 sec
10	10	15	704x480 Frame	10	VBR	5 sec
11	10	15	704x480 Frame	10	VBR	5 sec
12	10	15	704x480 Frame	10	VBR	5 sec
13	10	15	704x480 Frame	10	VBR	5 sec
14	10	15	704x480 Frame	10	VBR	5 sec
15	10	15	704x480 Frame	10	VBR	5 sec
16	10	15	704x480 Frame	10	VBR	5 sec

JPEG

	Quality
All	
1	2
2	2
3	2
4	2
5	2
6	2
7	2
8	2
9	2
10	2
11	2
12	2
13	2
14	2
15	2
16	2

Audio (G.723)

Sampling Rate

8kHz

Channel

1, 2

3, 4

5, 6

7, 8

9, 10

11, 12

13, 14

15, 16

OK

Cancel

Contact Information

Any advice or comment about our products and service, or anything we can help you please don't hesitate to contact with us. We will do our best to support you for your products, projects and business.

Taiwan Commate Computer Inc.

Address	19F., No.94, Sec. 1, Xintai 5th Rd., Xizhi Dist., New Taipei City 22102, Taiwan
TEL	+886-2-26963909
FAX	+886-2-26963911
Website	http://www.commell.com.tw
E-Mail	info@commell.com.tw (General Information) tech@commell.com.tw (Technical Support)
Facebook	https://www.facebook.com/pages/Taiwan-Commate-Computer-Inc/54799395271899
Twitter	https://twitter.com/Taiwan_Commate

Commell is the trademark of Taiwan Commate Computer INC.