

# MP-6816

---

## User's Manual

Edition 1.0  
2011/09/16



## **Copyright**

Copyright 2011 all rights reserved. This document is copyrighted and all rights are reserved. The information in this document is subject to change without prior notice to make improvements to the products.

This document contains proprietary information and protected by copyright. No part of this document may be reproduced, copied, or translated in any form or any means without prior written permission of the manufacturer.

All trademarks and/or registered trademarks contains in this document are property of their respective owners.

## **Disclaimer**

The company shall not be liable for any incidental or consequential damages resulting from the performance or use of this product.

The company does not issue a warranty of any kind, express or implied, including without limitation implied warranties of merchantability or fitness for a particular purpose.

The company has the right to revise the manual or include changes in the specifications of the product described within it at any time without notice and without obligation to notify any person of such revision or changes.

## **Trademark**

All trademarks are the property of their respective holders.

---

Any questions please visit our website at <http://www.commell.com.tw>.

## Packing List:

### Hardware:

MP-6816 Mini PCI Capture Card x1

### Cable kit:

### Cable:



1 x 10-pin DF14 to D-sub 9 Cable(**MP-6816D4**)  
2 x 10-pin DF14 to D-sub 9 Cable(**MP-6816D8**)  
(**OALES-BKU1-H14**)



1 x 4-ch BNC Video input &4-ch RCA Audio input  
Cable (**MP-6816D4**)  
2 x 4-ch BNC Video input &4-ch RCA Audio input  
Cable (**MP-6816D8**)  
(**OALDB9-BR4**)

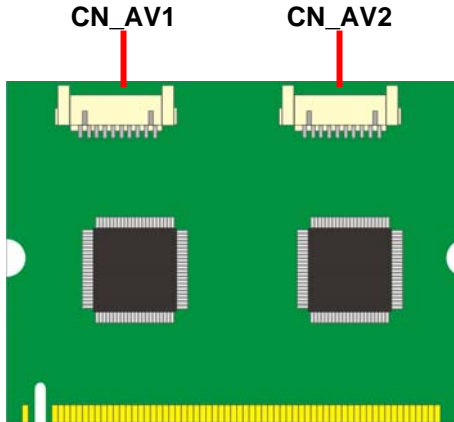
### CD Content:

Drivers & User's Manual

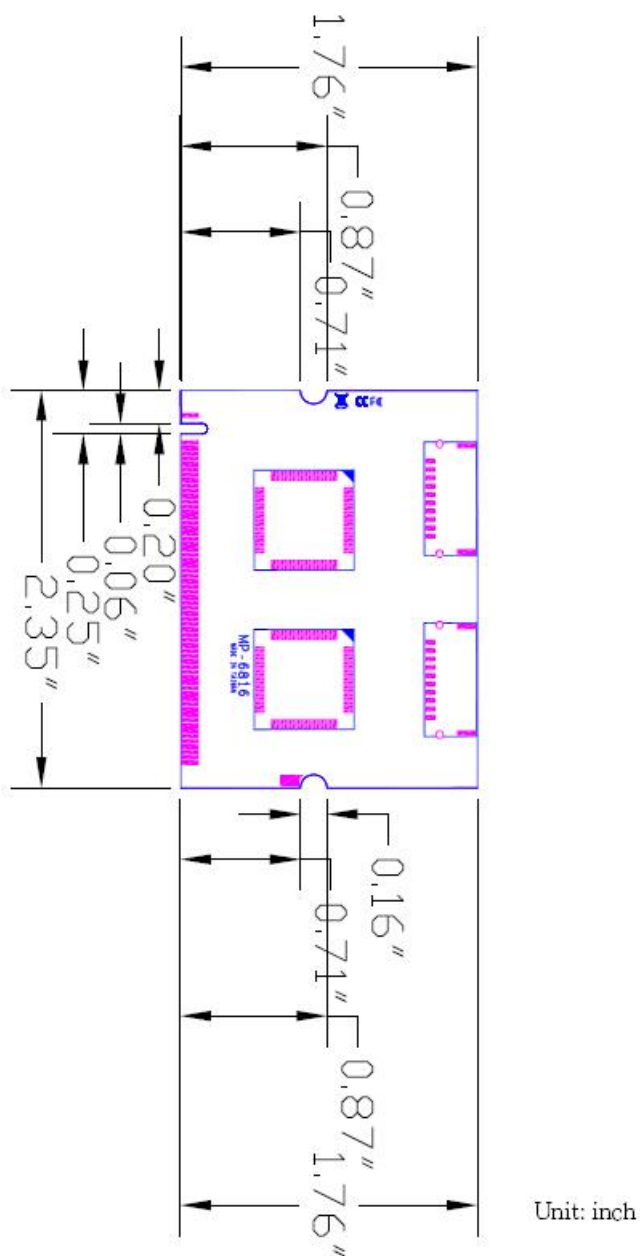
# 1.0 <Product Specification>

General Specification	
<b>Form Factor</b>	Mini PCI card
<b>Controller</b>	TW6816 chip
<b>Accessories</b>	<b>MP-6816D4:</b> 1 x 10-pin DF14 to 1 x D-sub 9 Cable 1 x 4-ch BNC Video input & 4-ch RCA Audio input Cable <b>MP-6816D8:</b> 2 x 10-pin DF14 to 1 x D-sub 9 Cable 2 x 4-ch BNC Video input & 4-ch RCA Audio input Cable
<b>Display rate</b>	4 channel Total 120 fps @ D1 resolution ( <b>MP-6816D4</b> ) 8 channel Total 120 fps @ D1 resolution ( <b>MP-6816D8</b> )
<b>Output Type</b>	NTSC(M/N/4.43) PAL(B/D/G/H/I/K/L/M/N/60) SECAM standards
<b>Dimensions (L x W)</b>	60mm x 45mm

# 1.1 <Component Placement>



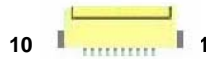
## 1.2 <Mechanical Drawing>



## 1.3 <Connector Reference>

Connector: CN\_AV1/2

Type: DF14 10-pin pitch=1.25mm



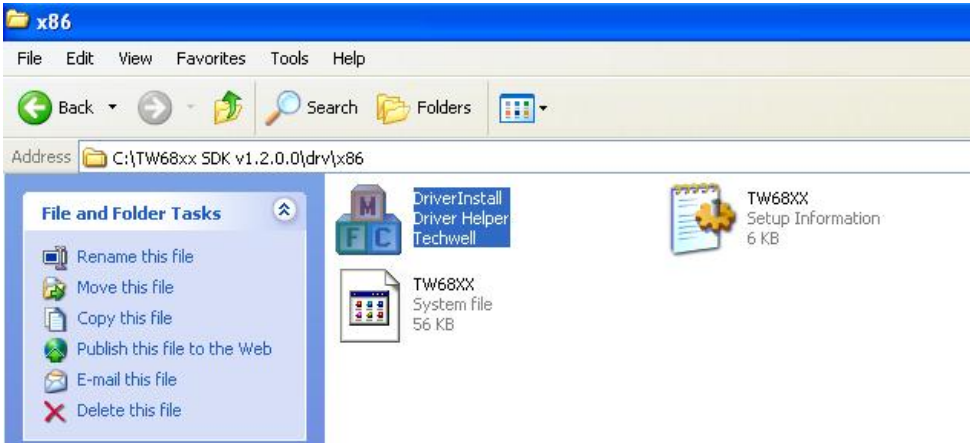
Pin	Description	Pin	Description
1	Video1	2	Video2
3	Video3	4	Video4
5	Ground	6	Audio1
7	Audio2	8	Audio3
9	Audio4	10	Ground

## 1.4 <Driver Setting>

1. Copy the CD Driver folder to disk, Ex: C:\ , D:\ ...

2. Please select file location

**C:\TW68xx SDK\drv\x86\Driverinstall**



3. Please choose **Install**



4. Please click **“OK”** to complete the installation.

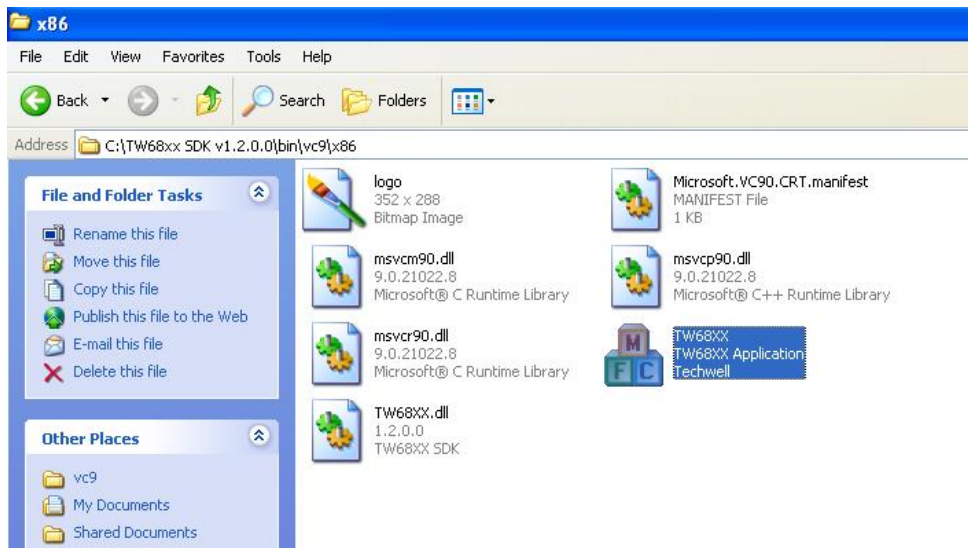




## 1.5 <Sample Program>

### 1. Please select file location

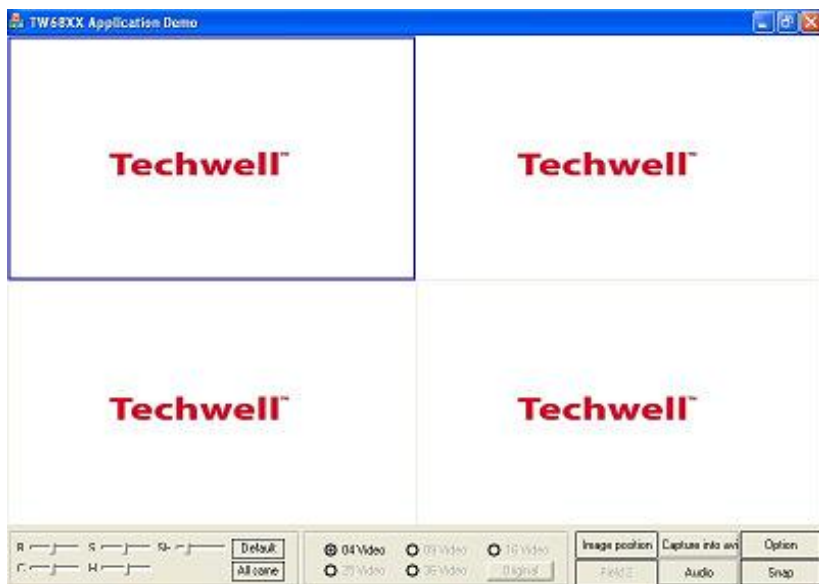
**C:\TW68xx SDK\bin\vc9\x86\Tw68xx**



## 2. Please refer to the usage instructions.

C:\TW68xx SDK\doc

[\TW68XX SDK Demo Program Instructions.doc](#)



## Contact Information

Any advice or comment about our products and service, or anything we can help you please don't hesitate to contact with us. We will do our best to support you for your products, projects and business.

### Taiwan Commate Computer Inc.

---

Address	19F., .94, Sec. 1, Xintai 5th Rd., Xizhi Dist., New Taipei City 22102, Taiwan (R.O.C.)
TEL	+886-2-26963909
FAX	+886-2-26963911
Website	<a href="http://www.commell.com.tw">http://www.commell.com.tw</a>
E-Mail	<a href="mailto:info@commell.com.tw">info@commell.com.tw</a> (General Information) <a href="mailto:tech@commell.com.tw">tech@commell.com.tw</a> (Technical Support)
Facebook	<a href="https://www.facebook.com/pages/Taiwan-Commate-Computer-Inc/54799395271899">https://www.facebook.com/pages/Taiwan-Commate-Computer-Inc/54799395271899</a>
Twitter	<a href="https://twitter.com/Taiwan_Commate">https://twitter.com/Taiwan_Commate</a>

---

**Commell is the trademark of Taiwan Commate Computer INC.**