

MP-878D

Mini-PCI Video Capture Card

User's Manual



Edition	Release Date
1.0	2007/01/25

Copyright

Copyright 2005, all rights reserved. This document is copyrighted and all rights are reserved. The information in this document is subject to change without prior notice to make improvements to the products.

This document contains proprietary information and protected by copyright. No part of this document may be reproduced, copied, or translated in any form or any means without prior written permission of the manufacturer.

All trademarks and/or registered trademarks contains in this document are property of their respective owners.

Disclaimer

The company shall not be liable for any incidental or consequential damages resulting from the performance or use of this product.

The company does not issue a warranty of any kind, express or implied, including without limitation implied warranties of merchantability or fitness for a particular purpose. The company has the right to revise the manual or include changes in the specifications of the product described within it at any time without notice and without obligation to notify any person of such revision or changes.

Trademark

All trademarks are the property of their respective holders.

Any questions please visit our website at <http://www.commell.com.tw>

Packing List:

Please check the package content before you starting using the board.

Hardware:

MP-878D Mini-PCI Video Capture card	x 1
1 x Cable support S-video & Composite	x 1
Utility CD	x 1

Index

Chapter 1 <Introduction>

1.1 <Product Overview>..... 6

1.2 <Hardware requirement>.....6

1.3 <Software requirement>.....6

1.4 < Dimensions>7

1.5 < Hardware installation>8

1.6< Software installation>9

1.7< Sample program>20

Contact Information..... 233

(This Page is left for Blank)

Chapter 1 <Introduction>

1.1 <Product Overview>

COMMELL MP-878D is a 1 channel Video input Video Capture Card . That Support up to D1 resolution at 30/25 fps. Also MP-878D supports NTSC/PAL signals. (MP-878D2 is allow 2 Cards which installed in one PC system. If user wants to use more than two MP-878D2 Mini-PCI capture card in one system, User needs to be aware of that each 878 chip on the card needs to be set for different PCI Subsystem ID in EEPROM device.)

1.2 <Hardware requirement>

- I. Intel Pentium III 1.0 GHz or above (The CPU speed depends on the video Frame rate, channels and resolution)
- II. 256 MB RAM or above
- III. Free Mini-PCI slot

1.3 <Software requirement>

Microsoft Windows 2000/XP with DirectX 9.0 or above

1.4<Dimensions>

44.6 x 59.5 mm (Mini-PCI Type-III B)



Figure 1.2 Dimensions

1.5<Hardware installation >

1. Turn off your computer and unplug the power cord.
2. Remove the cover of your computer.
3. Touch the metal part on the surface of your computer to neutralize Any static electricity that might be on your body.
4. Place the MP-878D into the Motherboard's Mini-PCI slot and connect Corresponding accessories to the MP-878D.
5. Replace the cover of your computer chassis
6. Plug in the power cord and turn on the computer.

1.6<Software installation >

When you completed the Hardware installation, the system will auto –detect
And a message pops up as following:



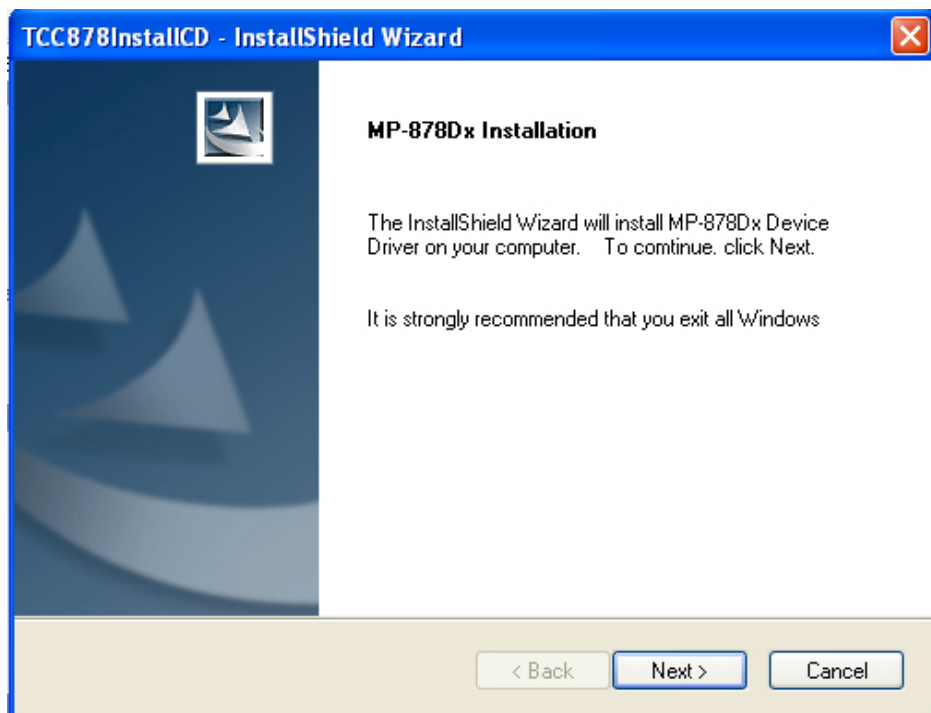
Please all select “ Cancel “

Then, Insert the driver CD into your system's CD-ROM to Set up MP-878D.

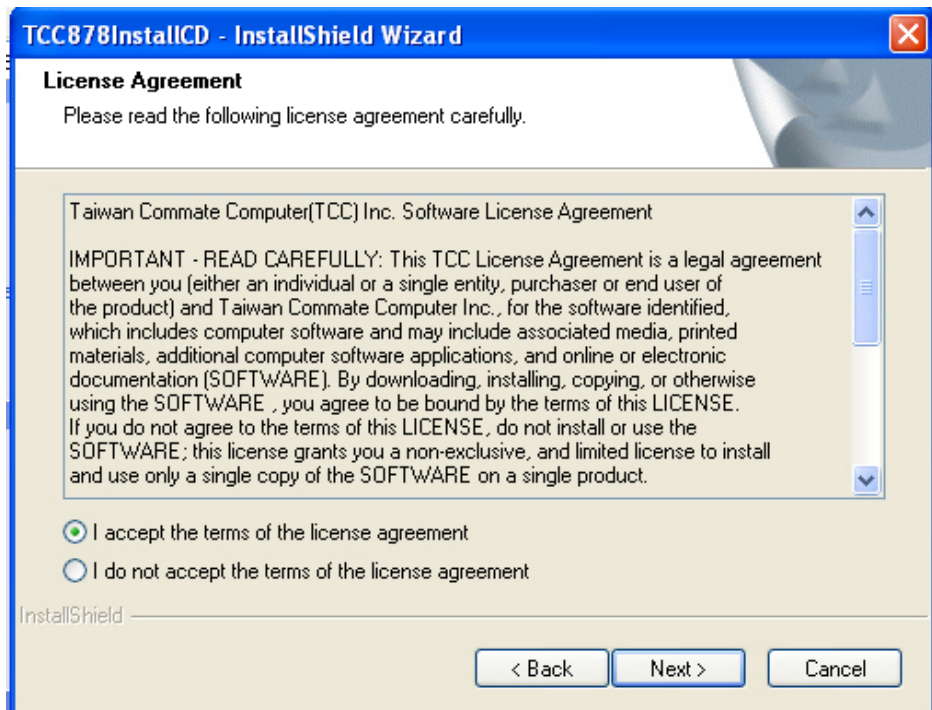
Run Setup.exe

(E:/Media/SINGLE.EXE_IMAGE/Disk Image/Disk/Setup.exe)

Please select " Next " to continue.



Please read the following License Agreement. Press the Page Down key to see the rest of agreement and click “ Yes “ to continue the installation.



Please fill in your User Name & Company Name. Then, click “ Next “.

TCC878InstallCD - InstallShield Wizard

Customer Information

Please enter your information.

Please enter your name and the name of the company for which you work.

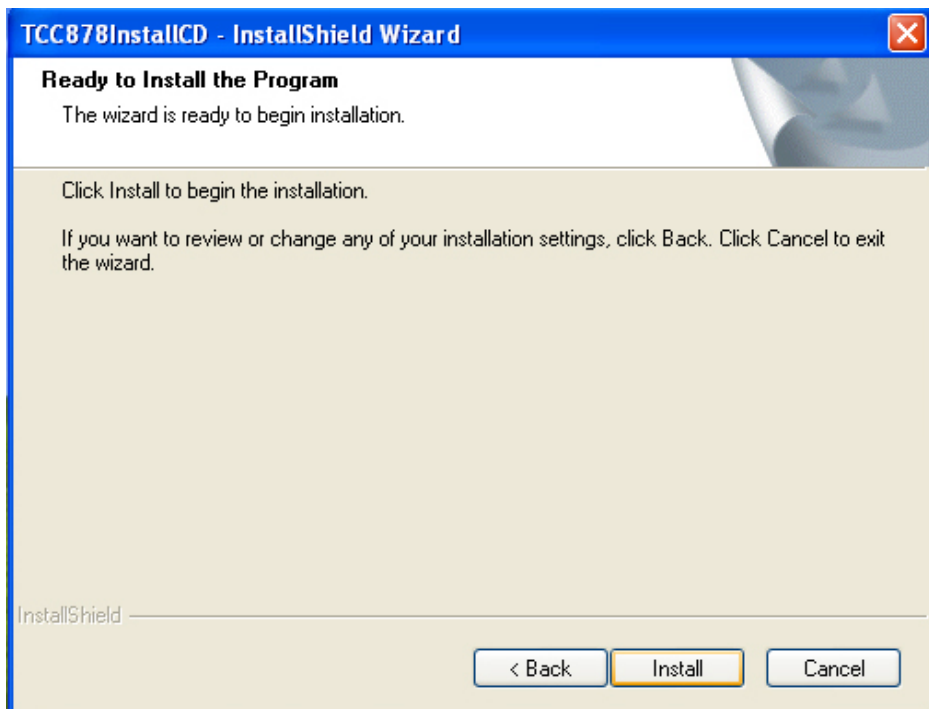
User Name:

Company Name:

InstallShield

< Back Next > Cancel

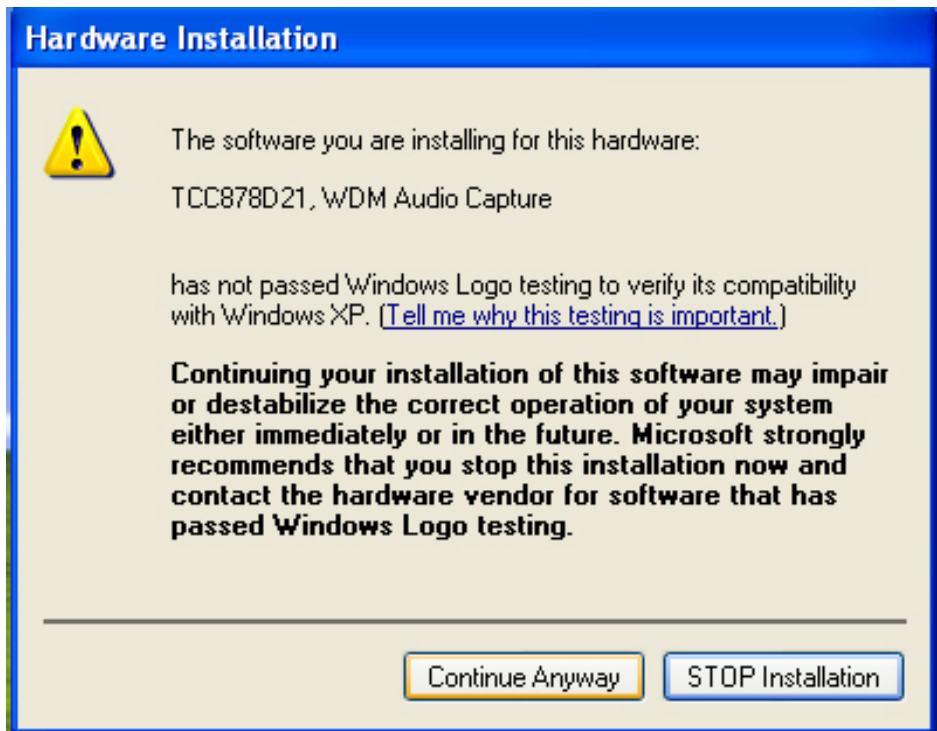
Please select Install in this page .



Click “ Continue Anyway “ when you see the following message.



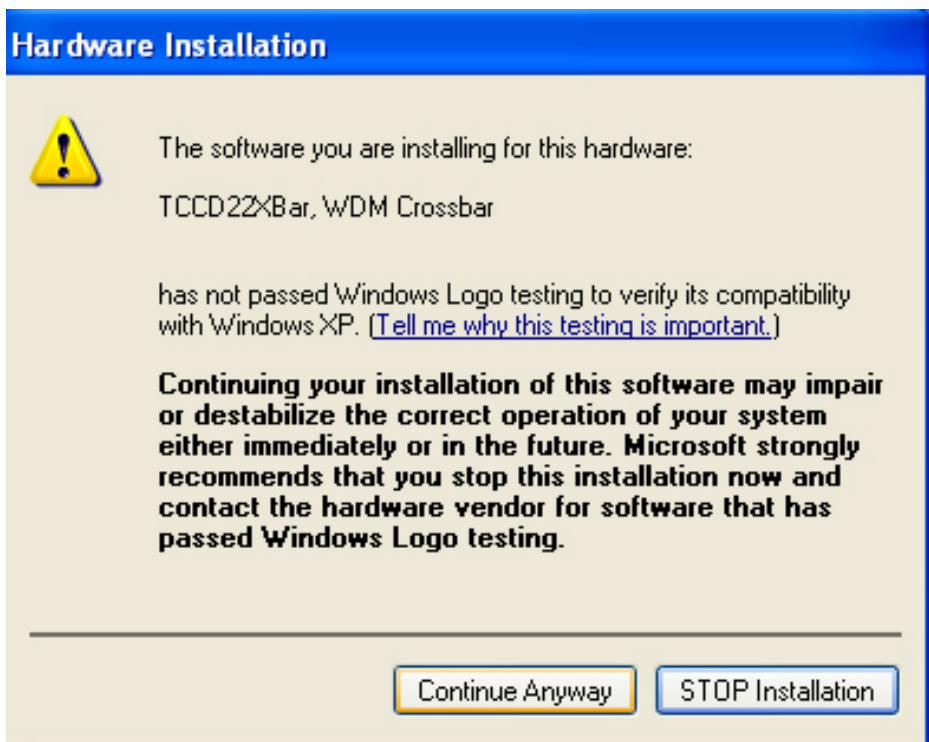
Click "Continue Anyway" when you see the following message.



Click “ Continue Anyway “ when you see the following message.



Click "Continue Anyway" when you see the following message.

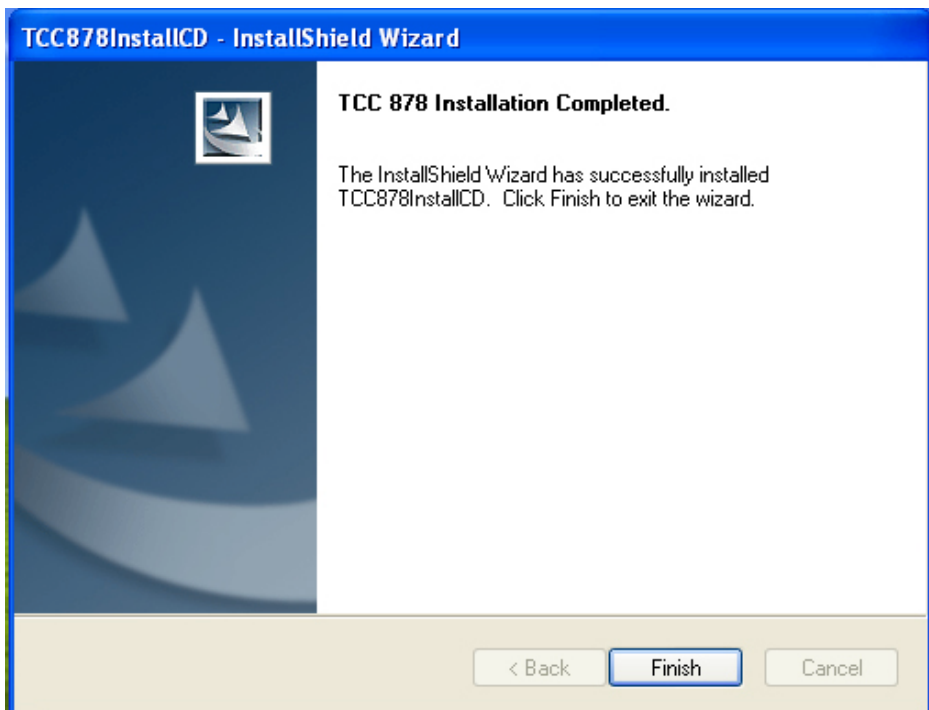


The screenshot shows a Windows Hardware Installation warning dialog box. The title bar is blue and contains the text "Hardware Installation". The main area has a light beige background. On the left, there is a yellow warning triangle icon with a black exclamation mark. To the right of the icon, the text reads: "The software you are installing for this hardware: TCCD22XBar, WDM Crossbar". Below this, it says: "has not passed Windows Logo testing to verify its compatibility with Windows XP. ([Tell me why this testing is important.](#))". A bold warning message follows: "Continuing your installation of this software may impair or destabilize the correct operation of your system either immediately or in the future. Microsoft strongly recommends that you stop this installation now and contact the hardware vendor for software that has passed Windows Logo testing." At the bottom, there are two buttons: "Continue Anyway" (highlighted with a yellow border) and "STOP Installation" (with a blue border).

Click “ Continue Anyway “ when you see the following message.



When the following message appears, click “ Finish “ to complete the installation and restart Windows or your computer.



1.7<Sample Program>

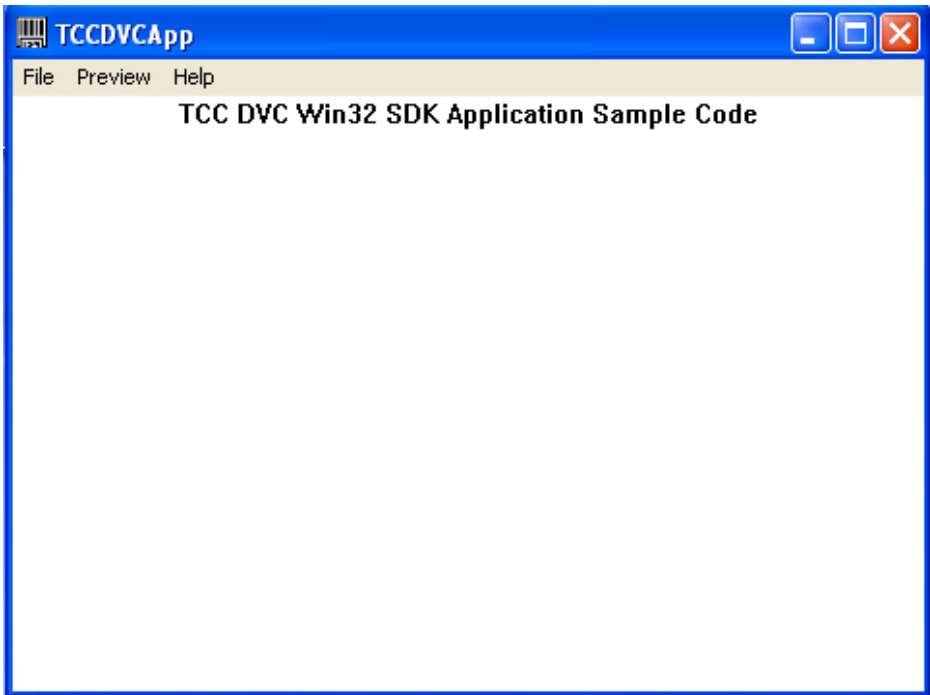
When you completed hardware & software installation, you can use COMMELL “TCCVDCApp” sample program to test.

You can find TCCDVCApp.exe on desktop.

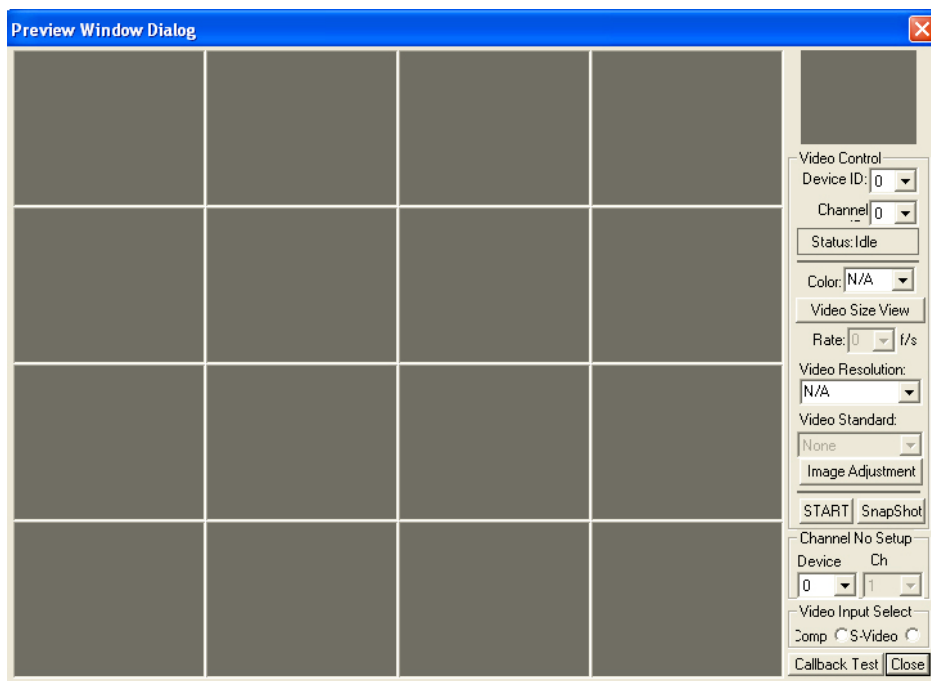


Please double –click “ TCCDVCApp.exep , It'll pops up as following.

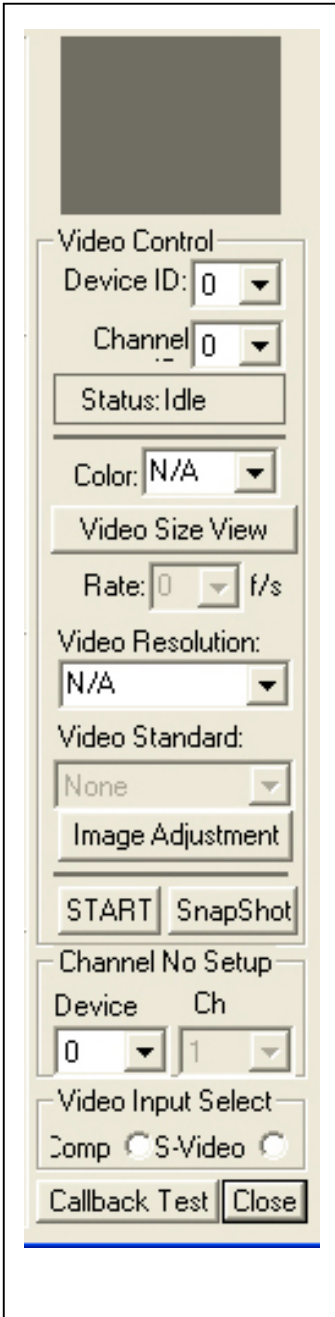
Then Please Push “ Preview “ on the left-upper Menu.



You 'll get the program interface as following.



Explanation of Sample program function



Device ID:

It is mean BT878I Chipset. One MP-878D have 1 chipset, so, you only can select 0

Channel ID:

Per chip can support 1 Video input, So, You can select 0 for Video input.

Snapshot:

Catch the image on working channel.

Callback Test:

Catch the series image on working channel

Note:

Every channel is work separately, when you want to change any setting, please stop all channels which working.

Contact Information

Any advice or comment about our products and service, or anything we can help you please don't hesitate to contact with us. We will do our best to support you for your products, projects a business.

Taiwan Commate Computer Inc.

Address	8F, No. 94, Sec. 1, Shin Tai Wu Rd., Shi Chih Taipei Hsien, Taiwan
TEL	+886-2-26963909
FAX	+886-2-26963911
Website	http://www.commell.com.tw
E-Mail	info@commell.com.tw (General Information) tech@commell.com.tw (Technical Support)

Commell is our trademark of industrial PC division