

# MPX-3132

## User's Manual

Edition 1.1  
2014/11/13



## Copyright

Copyright 2014, all rights reserved. This document is copyrighted and all rights are reserved. The information in this document is subject to change without prior notice to make improvements to the products.

This document contains proprietary information and protected by copyright. No part of this document may be reproduced, copied, or translated in any form or any means without prior written permission of the manufacturer.

All trademarks and/or registered trademarks contains in this document are property of their respective owners.

## Disclaimer

The company shall not be liable for any incidental or consequential damages resulting from the performance or use of this product.

The company does not issue a warranty of any kind, express or implied, including without limitation implied warranties of merchantability or fitness for a particular purpose.

The company has the right to revise the manual or include changes in the specifications of the product described within it at any time without notice and without obligation to notify any person of such revision or changes.

## Trademark

All trademarks are the property of their respective holders.

---

Any questions please visit our website at <http://www.commell.com.tw>

## Index

1. <Product Specification & Packing List>.....	1
2. <Mechanical Drawing> .....	2
3. <Component Placement & Pin assignment> .....	3
4. <BIOS Configuration> .....	4
5. <Install the operating system > .....	6
6. <SATA RAID Configuration> .....	8
Contact Information.....	9

## 1. <Product Specification & Packing List>

### General Specification

<b>Form Factor</b>	MiniPCle Card
<b>Controller</b>	Silicon Image Sil3132
<b>Serial ATA Interface</b>	2 x serial ATAll interface with 300MB/s transfer rate (Support RAID function)
<b>Dimension</b>	30mm x 50.95mm

The specifications may be different as the actual production.

For further product information please visit the website at <http://www.commell.com.tw>.

## Packing List:

### Hardware:

MPX-3132 SATAII PCIe mini card x 1

### Cable Kit:

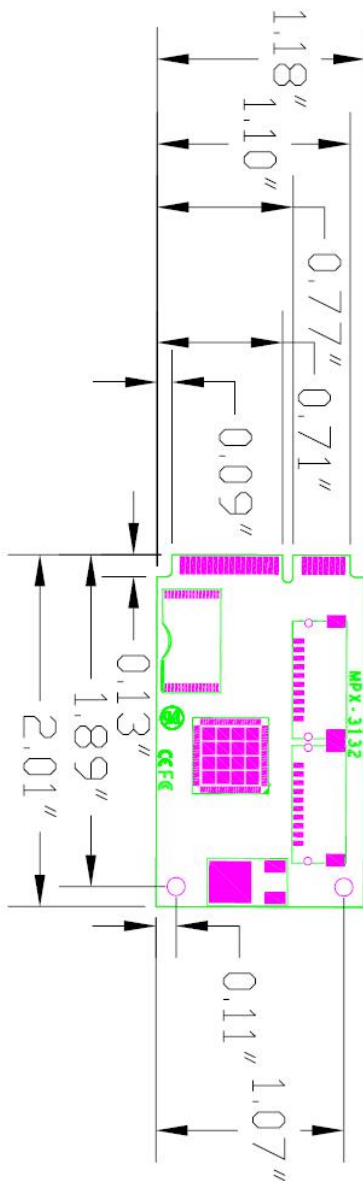


DF14 10-Pin for SATA Cable x 2  
(OALSATA7-H10)/(1040123)

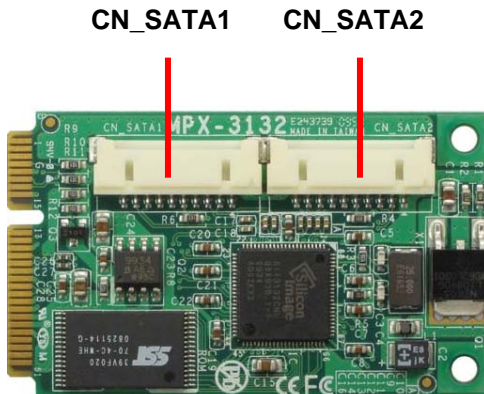
### CD Content:

Driver & User's Manual

## 2. <Mechanical Drawing>

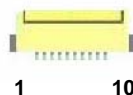


### 3. <Component Placement & Pin assignment>



Connector: CN\_SATA1/2

Type: DF14 10-pin pitch=1.25mm



Pin	Description	Pin	Description
1	GND	2	TXP0/1
3	TXN0/1	4	GND
5	SATA_LED0/1	6	SATA_LED0#/1#
7	GND	8	RXN0/1
9	RXP0/1	10	GND

## 4. <BIOS Configuration>

**Attention! This setting is only relatively new motherboard needs!**

**Models are as follows**

**ATX:** AS-C74, AS-C76

**Micro ATX:** MS-C73, MS-C75

**Mini ITX:** LV-67F, LV-67G, LV-67H, LV-67I, LV-67J, LV-67K, LV-67L, LV-67M, LV-67N, LV-67O

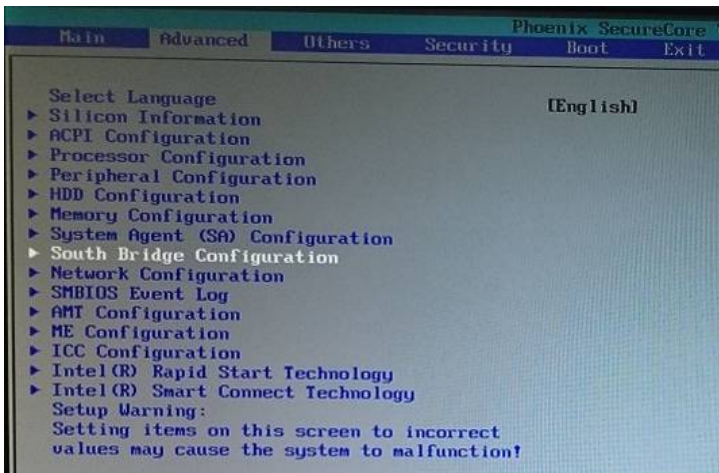
**3.5"** : LS-378, LE-379, LE-37A, LS-37B, LE-37C, LE-37D

**Pico ITX:** LP-172, LP-173

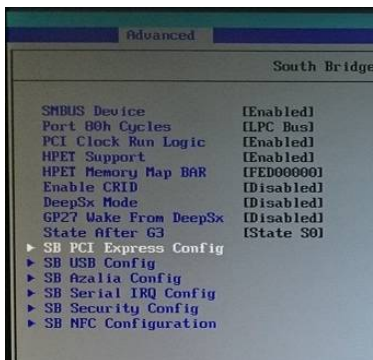
**Full-Size CPU Card:** FS-A74, FS-A75, FS-A76, FS-A77

**Half-Size CPU Card:** HS-773, HS-774, HS-B70, HE-B71

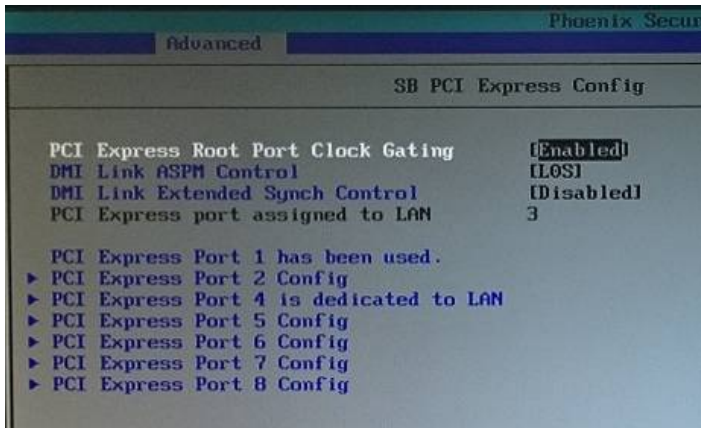
1. In paged menu "Advanced" and enter "South Bridge Configuration".



2. Entering "SB PCI Express Config".



3. Here it must be based on different boards to set the PCIe speed to "GEN1". So that it can detect the Mini Card.



AS-C74: PCIe7

MS-C73: PCIe3

LV-67F: PCIe3

LV-67H: Card1: PCIe3, Card2: PCIe5

LV-67J: PCIe7

LV-67L: Card1: PCIe3, Card2: PCIe5

LV-67N: Card1: PCIe7, Card2: PCIe6

LS-378: Card1: PCIe3, Card2: PCIe5

LE-37A: Card1: PCIe3, Card2: PCIe5

LE-37C: Card1: PCIe5, Card2: PCIe7

LP-172: PCIe3

FS-A74: Card1: PCIe7, Card2: PCIe8

FS-A76: Card1: PCIe7, Card2: PCIe8

HS-773: Card1: PCIe5, Card2: PCIe7

HS-B70: PCIe3

AS-C76: PCIe7

MS-C75: PCIe3

LV-67G: PCIe7

LV-67I: PCIe3

LV-67K: Card1: PCIe3, Card2: PCIe5

LV-67M: Card1: PCIe5, Card2: PCIe7

LV-67O: PCIe4

LE-379: PCIe3

LS-37B: Card1: PCIe3, Card2: PCIe5

LE-37D: Card1: PCIe4, Card2: PCIe3

LP-173: PCIe2

FS-A75: Card1: PCIe7, Card2: PCIe8

FS-A77: PCIe4

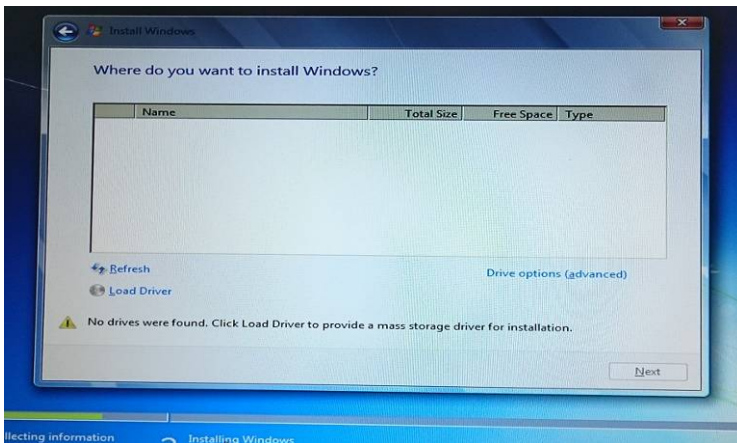
HS-774: Card1: PCIe5, Card2: PCIe7

HE-B71: PCIe2

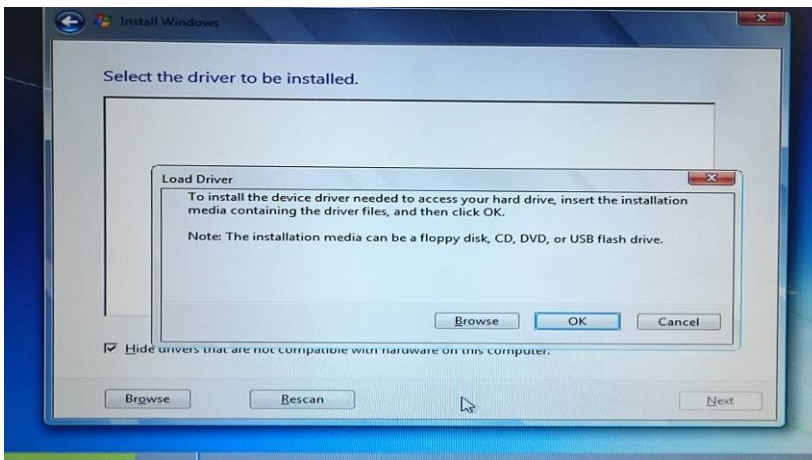


## 5. <Install the operating system >

1. When you enter the partition screen, you will find no detect hard drive.

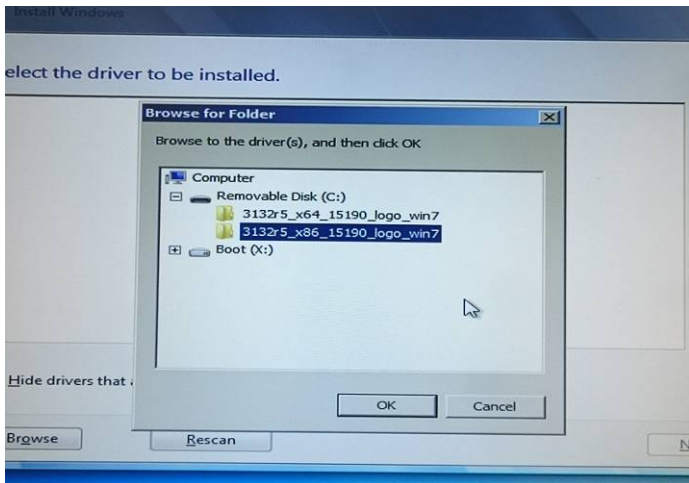


2. You need to click the "Load Driver" and plug in your flash drive (which have a MPX-3132's driver).

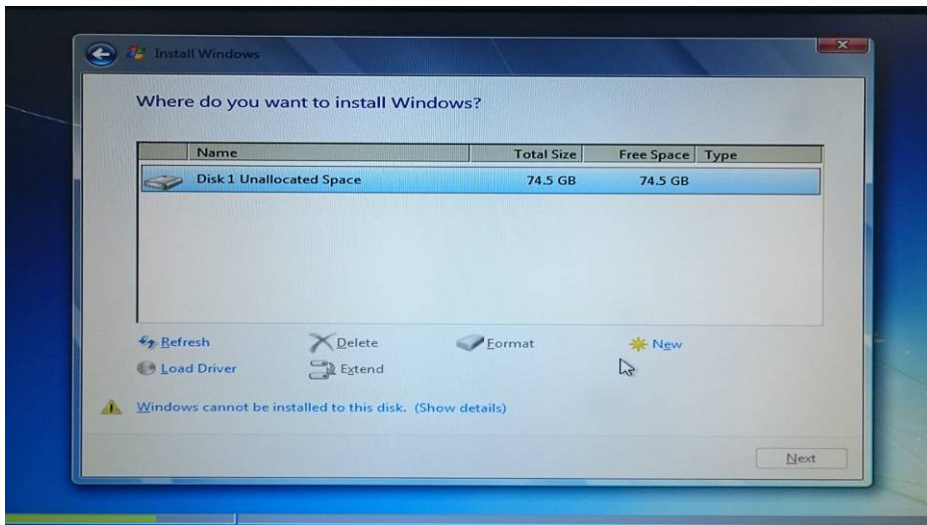


Note: If you want to install the Windows XP, you need a floppy disk to load the driver.

3. Click "Browse" and find your flash drive, choose your system type then click "OK".



4. Finally, the hard disk will show up.



## 6. <SATA RAID Configuration>

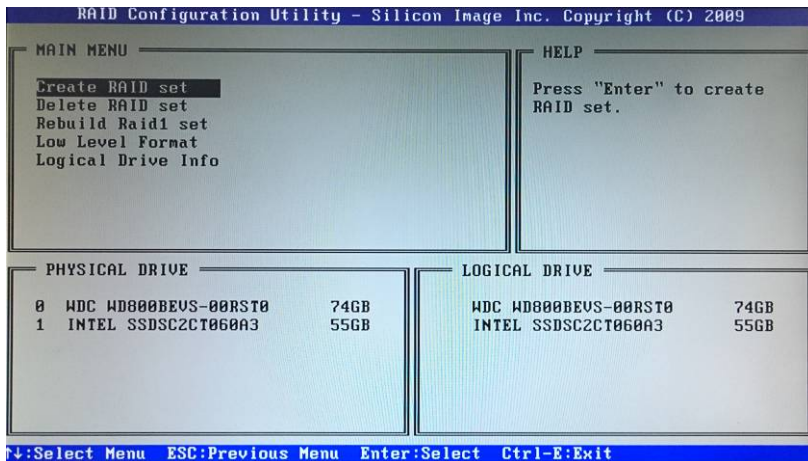
This MiniCard **only supports** the following configurations:

**RAID 0 (Striping):** Two hard drives operating as one drive for optimized data R/W performance. It needs two unused drives to build this operation.

**RAID 1 (Mirroring):** Copies the data from first drive to second drive for data security, and if one drive fails, the system would access the applications to the workable drive. It needs two unused drives or one used and one unused drive to build this operation. The second drive must be the same or larger size than first one.

*For more information of Silicon Image Technology, please visit silicon Image website.*

At boot time, press <Ctrl + S> or <F4> to enter the RAID configuration menu



## Contact Information

Any advice or comment about our products and service, or anything we can help you please don't hesitate to contact with us. We will do our best to support you for your products, projects and business.

### Taiwan Commate Computer Inc.

Address	19F., No.94, Sec. 1, Xintai 5th Rd., Xizhi Dist., New Taipei City 22102, Taiwan
TEL	+886-2-26963909
FAX	+886-2-26963911
Website	<a href="http://www.commell.com.tw">http://www.commell.com.tw</a>
E-Mail	<a href="mailto:info@commell.com.tw">info@commell.com.tw</a> (General Information) <a href="mailto:tech@commell.com.tw">tech@commell.com.tw</a> (Technical Support)
Facebook	<a href="https://www.facebook.com/pages/Taiwan-Commate-Computer-Inc/547993955271899">https://www.facebook.com/pages/Taiwan-Commate-Computer-Inc/547993955271899</a>
Twitter	<a href="https://twitter.com/Taiwan_Commate">https://twitter.com/Taiwan_Commate</a>

**Commell is a brand name of Taiwan commate computer Inc.**