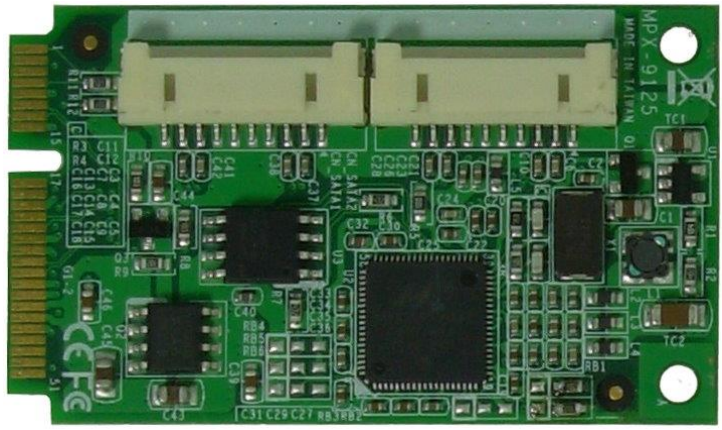


# MPX-9125

## User's Manual

Edition 1.2  
2016/04/25



## Copyright

Copyright 2014, all rights reserved. This document is copyrighted and all rights are reserved. The information in this document is subject to change without prior notice to make improvements to the products.

This document contains proprietary information and protected by copyright. No part of this document may be reproduced, copied, or translated in any form or any means without prior written permission of the manufacturer.

All trademarks and/or registered trademarks contains in this document are property of their respective owners.

## Disclaimer

The company shall not be liable for any incidental or consequential damages resulting from the performance or use of this product.

The company does not issue a warranty of any kind, express or implied, including without limitation implied warranties of merchantability or fitness for a particular purpose.

The company has the right to revise the manual or include changes in the specifications of the product described within it at any time without notice and without obligation to notify any person of such revision or changes.

## Trademark

All trademarks are the property of their respective holders.

---

Any questions please visit our website at <http://www.commell.com.tw>

## Index

1. <Product Specification & Packing List>.....	1
2. <Mechanical Drawing> .....	2
3. <Component Placement & Pin assignment> .....	3
4. <How to use>.....	4
5. <SATA RAID Configuration> .....	10
Contact Information.....	11

## 1. <Product Specification & Packing List>

### General Specification

<b>Form Factor</b>	MiniPCIe Card
<b>Controller</b>	Marvell 88SE9125
<b>Serial ATA Interface</b>	2 x serial ATA3 interface with 600MB/s transfer rate (Support RAID function)
<b>Supports OS</b>	WinVista, Win7
<b>Dimension</b>	30mm x 50.95mm

The specifications may be different as the actual production.

For further product information please visit the website at <http://www.commell.com.tw>

## Packing List:

### Hardware:

MPX-9125 SATA3 PCIe mini card x 1

### Cable Kit:

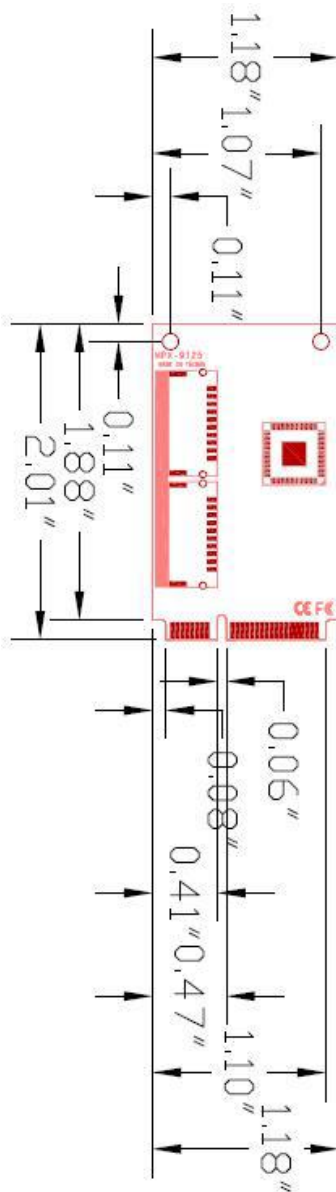


DF14 10-Pin for SATA Cable x 2  
(OALSATA3-H10-L35)/ (1040523)

### CD Content:

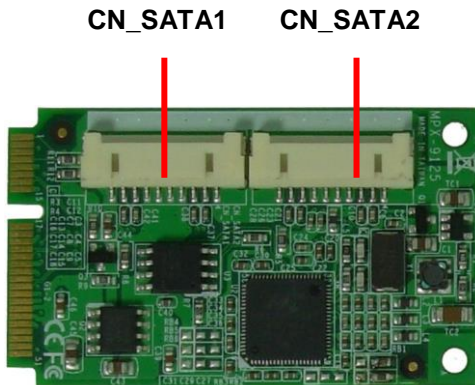
Driver & User's Manual

## 2. <Mechanical Drawing>



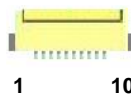
Unit: inch

### 3. <Component Placement & Pin assignment>



Connector: CN\_SATA1/2

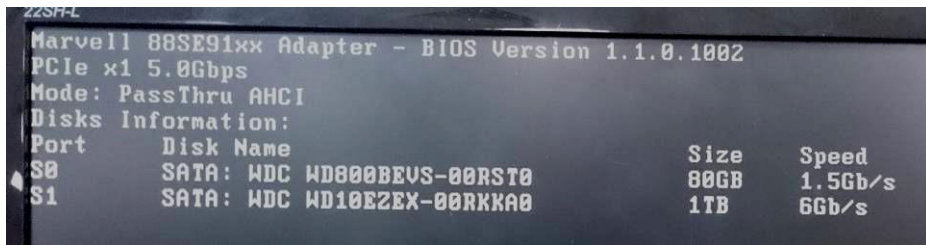
Type: DF14 10-pin pitch=1.25mm



Pin	Description	Pin	Description
1	GND	2	TXP0/1
3	TXN0/1	4	GND
5	GND	6	GND
7	GND	8	RXN0/1
9	RXP0/1	10	GND

## 4. <How to use>

In the boot process you will see the following screen.



This screen just show only one second, it means the board has detected MPX-9125 and show your HDD model number.

**Situation 1:** If you just purely expand HDD space, then you just need directly plug in the HDD. (Supported Hot Plug)

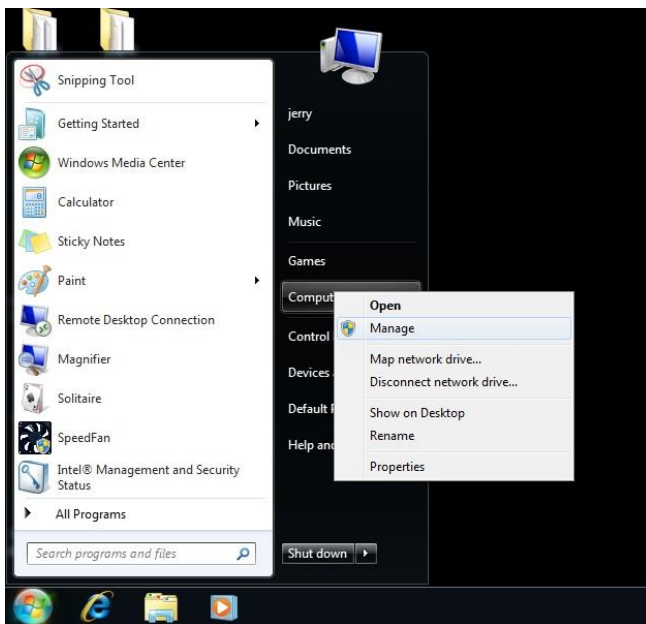
**Situation 2:** If you want to through the MPX-9125 enter the OS, then must be use MPX-9125 to install the OS. Otherwise it will be stuck in the boot process.

**Situation 3:** If you want to do RAID function, You must prepare a HDD which had installed OS, then boot from your motherboard.

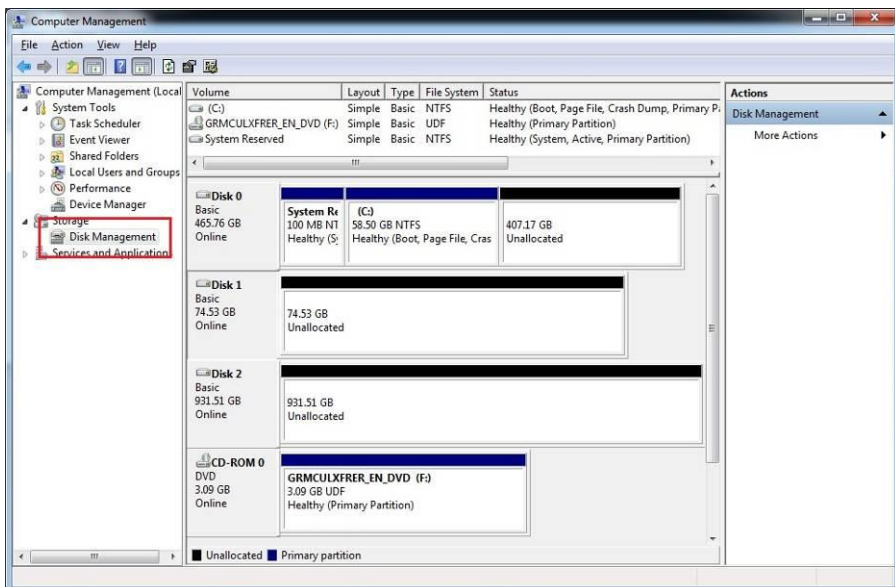
On the MPX-9125, plug in your two HDD which you want to do RAID function. Here we use the Win7 built-in RAID function to do RAID. Please refer to the following steps

**Note: Use RAID function can not install the OS.**

1. In the Start menu, right click "Computer" and open "Manage".

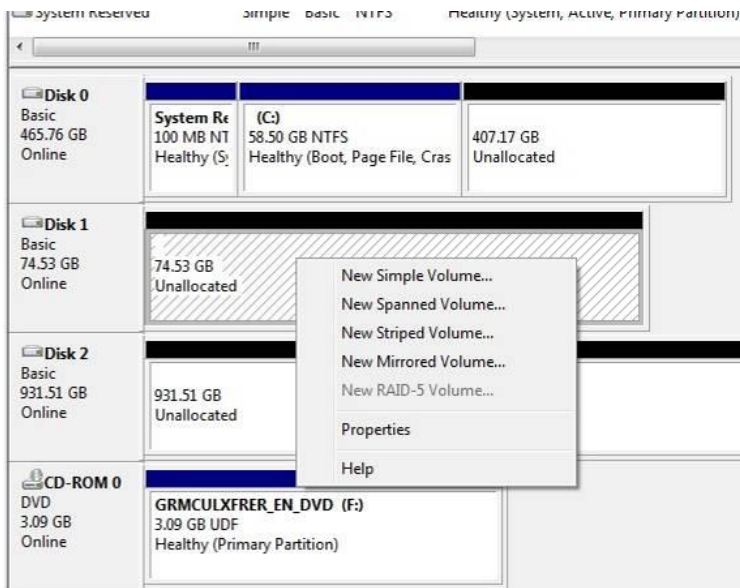


2. In the "Disk Management", you can see inserted in the MPX-9125's HDD. (Disk1 & Disk2).

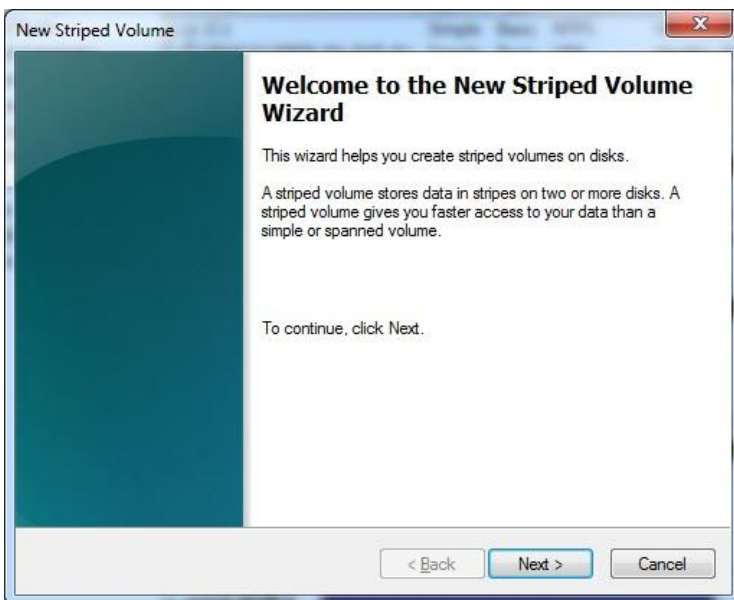




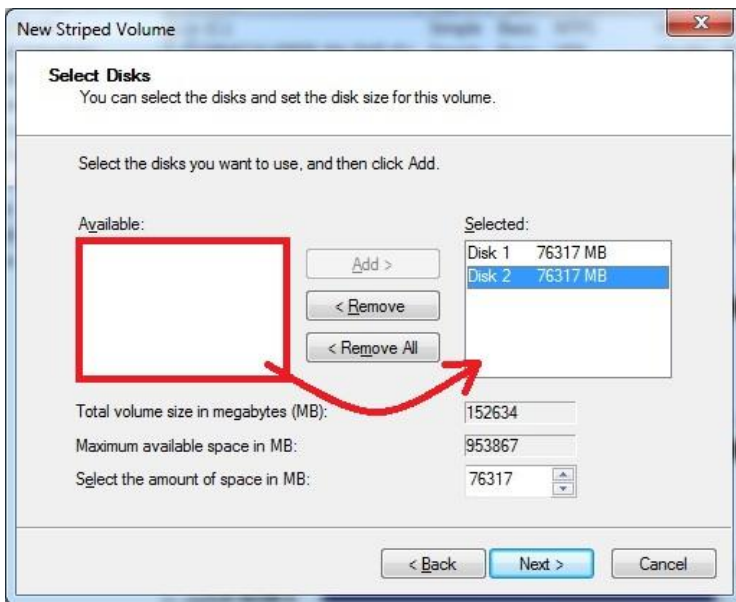
3. Right click "Disk1" or "Disk2", you can see the RAID function menu.



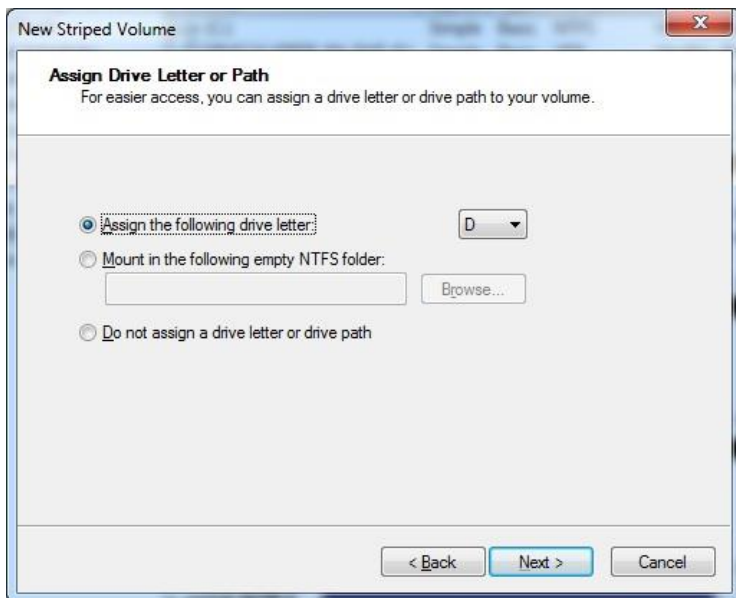
4. Here we use "Striped Volume" (RAID0), press "Next"



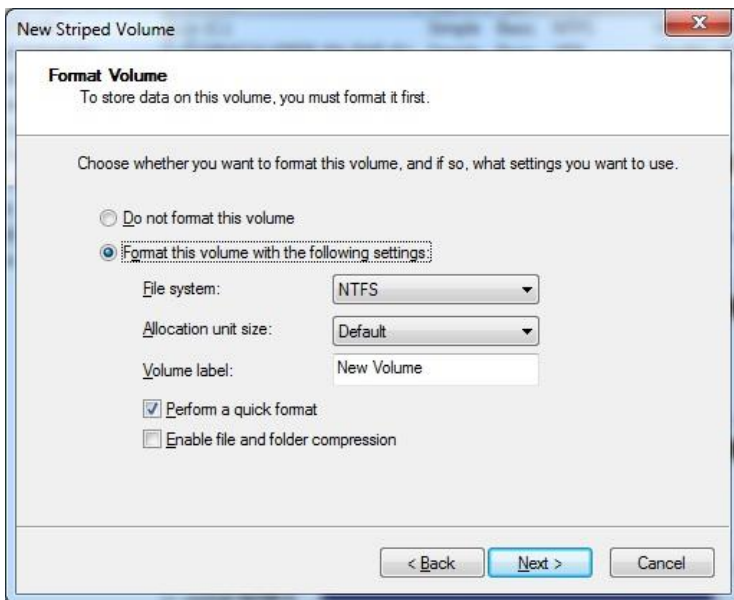
5. In "Available" box, "Add" your HDD to "Selected" box and set HDD space.



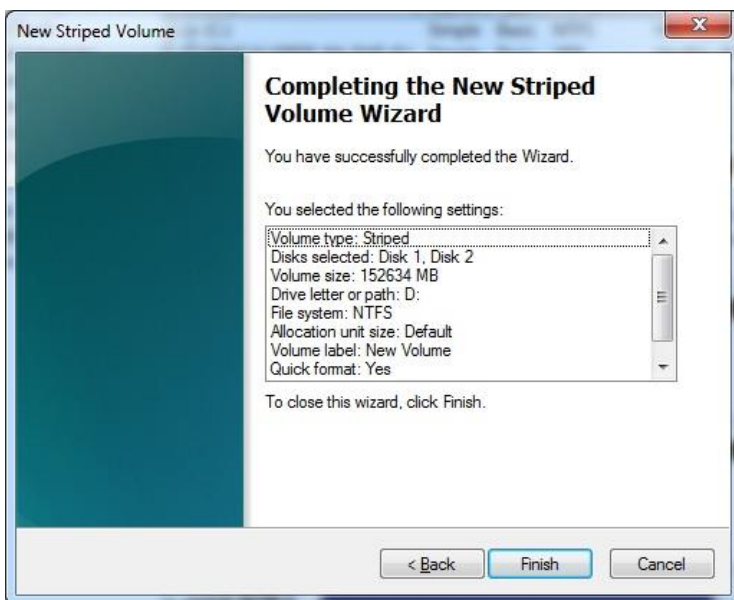
6. Assign RAID HDD letter or path.



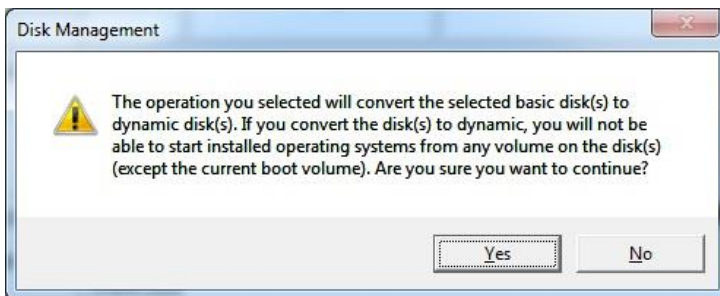
7. Format your RAID HDD or not.



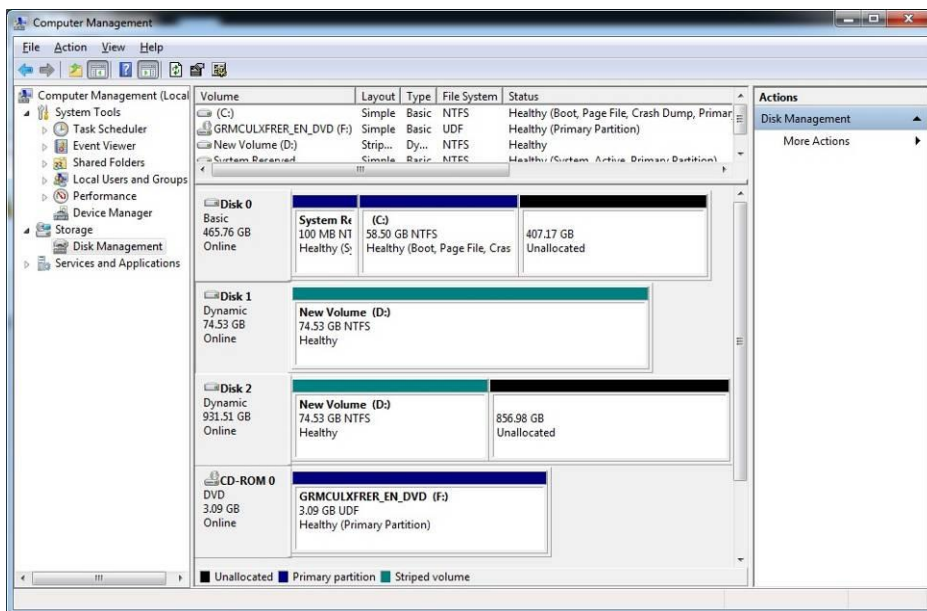
8. Confirm your settings and press "Finish".



9. Press "Yes" to complete the RAID set.



10. RAID HDD set up successfully



## 5. <SATA RAID Configuration>

This MiniCard **only supports** the following configurations:

**RAID 0 (Striping):** Two hard drives operating as one drive for optimized data R/W performance. It needs two unused drives to build this operation.

**RAID 1 (Mirroring):** Copies the data from first drive to second drive for data security, and if one drive fails, the system would access the applications to the workable drive. It needs two unused drives or one used and one unused drive to build this operation. The second drive must be the same or larger size than first one.

## Contact Information

Any advice or comment about our products and service, or anything we can help you please don't hesitate to contact with us. We will do our best to support you for your products, projects and business.

### Taiwan Commate Computer Inc.

Address	19F., No.94, Sec. 1, Xintai 5th Rd., Xizhi Dist., New Taipei City 22102, Taiwan
TEL	+886-2-26963909
FAX	+886-2-26963911
Website	<a href="http://www.commell.com.tw">http://www.commell.com.tw</a>
E-Mail	<a href="mailto:info@commell.com.tw">info@commell.com.tw</a> (General Information) <a href="mailto:tech@commell.com.tw">tech@commell.com.tw</a> (Technical Support)

**Commell is a brand name of Taiwan commate computer Inc.**