

**FS-97B**

**Test Report**

**Edition 1.1**



# Index

Index .....	2
<b>1. Function test .....</b>	<b>4</b>
1.1 Hardware function .....	4
1.2 BIOS function .....	6
1.3 Driver .....	8
<b>2. Compatibility test.....</b>	<b>9</b>
2.1 CPU Test .....	9
2.2 Memory Test.....	10
2.3 VGA Graphic Test.....	11
2.4 Audio Test.....	12
2.5 HDD Test .....	13
2.6 CD-ROM Test .....	13
2.7 USB Test .....	14
2.8 Serial Port Test .....	15
2.9 Keyboard、 Mouse Test .....	16
2.10 LAN Test.....	17
2.11 Power Supply Test.....	18
2.12 Floppy Drive Test.....	19
2.13 Boot Up Test.....	19
2.14 Os Install .....	19
2.15 Print Port Test.....	20
<b>3. Environmental test.....</b>	<b>21</b>
3.1 Temperature Test.....	21
<b>4.Reliability Test.....</b>	<b>22</b>
4.1 Power Consumption Test .....	22
FS-97B .....	26

FS-97B .....	26
FS-97B .....	27
4.3 Thermal measurements at various points on the board.....	28
<b>5. Performance Test.....</b>	<b>30</b>
5.1 Business Win Stone 2002 .....	30
5.2 Business Win Stone 2004 .....	31
5.3 Content Creation Winstone .....	32
5.4 3D MARK .....	32
5.5 3D MARK2006 .....	33
5.6 PC MARK2002.....	35
5.7 PC MARK2004.....	37
5.8 PC MARK2005.....	39

# 1. Function test

## 1.1 Hardware function

### Base Function Test

1	Power Button	PASS
2	Reset	PASS
3	Power LED	PASS
4	HDD LED	PASS
5	SATA1	PASS
6	SATA2	PASS
7	SATA3	PASS
8	SATA4	PASS
9	SATA5	PASS
10	SATA6	PASS
11	USB1	PASS
12	USB2	PASS
13	USB3	PASS
14	DDRII A	PASS
15	DDRII B	PASS
16	Floppy	PASS
17	LPT	PASS
18	COM1	PASS
19	COM2	PASS
20	VGA Port	PASS
21	PS2	PASS
22	AUDIO Port	PASS

<b>23</b>	CD_IN	PASS
<b>24</b>	CN_ATKB	PASS
<b>25</b>	Mini PCI	PASS
<b>26</b>	IrDA	PASS
<b>27</b>	DIO	PASS
<b>28</b>	DVI	PASS
<b>29</b>	LVDS	PASS
<b>30</b>	NBFAN	PASS
<b>31</b>	CPUFAN	PASS
<b>32</b>	SYSFAN	PASS

### **Jumper**

<b>1</b>	JRTC	PASS
<b>2</b>	JCFSEL	PASS
<b>3</b>	JVLCD	PASS

## 1.2 BIOS function

Item	Description	Result	Remark
1	Press 'Del' to run Setup Utility	PASS	
2	Ctrl-Alt-Del – Soft-Reboot	PASS	
3	Save & Exit Setup	PASS	
4	Date & Time Setting	PASS	
5	Drive A	PASS	
6	Quick Power On Self Test	PASS	
7	Boot Device Setting	PASS	
8	Boot Up Floppy Seek	PASS	
9	Boot Up Num Lock Status	PASS	
10	Boot Display	PASS	
11	LCD TYPE	PASS	
12	On Chip Secondary PCI IDE	PASS	
13	ACPI Suspend Type	PASS	
14	Halt On	PASS	
15	Onboard Serial Port	PASS	
16	USB Controller	PASS	
17	USB Keyboard Support	PASS	
18	Onboard FDC Controller	PASS	
19	Soft-Off by PWRBTN	PASS	
20	Power On Function	PASS	
21	ACPI Function	PASS	
22	Hot Key Password	PASS	
23	Wake-up by PCI card	PASS	

24	Resume by Alarm	PASS	
25	Watch Dog Timer Select	PASS	
26	Init Display First	PASS	
27	Onboard Parallel Port	PASS	
28	PWRON After PWR-Fail	PASS	
29	Power On by Ring	PASS	
30	Set Supervisor Password	PASS	
31	Set User Password	PASS	
32	UART Mode Select	PASS	
33	RxD , Txd Active	PASS	
34	IR Transmission Delay	PASS	
35	UR2 duplex Mode	PASS	
36	Use IR Pins	PASS	

## 1.3 Driver

### 1. Windows XP SP2 Driver Test

Item	Description	Result	Remark
1	Chipset Driver	PASS	
2	VGA Driver	PASS	
3	Audio Driver	PASS	
4	LAN Driver	PASS	

### 2. Windows Server 2003 Driver Test

Item	Description	Result	Remark
1	Chipset Driver	PASS	
2	Audio Driver	PASS	
3	LAN Driver	PASS	



## 2. Compatibility test

### 2.1 CPU Test

Spec	CPU Speed	Family	Processor	FSB	L2 Size	Result
<a href="#">SLACR</a>	2.40 GHz	Core 2 Quad	Q6600	1066 MHz	8MB	PASS
<a href="#">SL9UM</a>	2.40 GHz	Core 2 Quad	Q6600	1066 MHz	8 MB	PASS
<a href="#">SLAPC</a>	2.53 GHz	Core 2 Duo	E7200	1066 MHz	3 MB	PASS
<a href="#">SLAVN</a>	2.53 GHz	Core 2 Duo	E7200	1066 MHz	3 MB	PASS
<a href="#">SL9TA</a>	1.86 GHz	Core 2 Duo	E6300	1066 MHz	8 MB	PASS
<a href="#">SL9XP</a>	1.60 GHz	Celeron	420	800 MHz	512 KB	PASS
<a href="#">SL9XL</a>	2 GHz	Celeron	440	800 MHz	512 KB	PASS

## 2.2 Memory Test

<b>DDRII DRAM</b>	<b>DDRII Freq</b>	<b>Capacity Mbytes</b>	<b>Operating System</b>	<b>Result</b>
Transcend (K4T51083QC)	DDRII 800	1GB	WinXP, Server2003	
Transcend (K4T1G084QA-ZCE6)	DDRII 667	2GB	WinXP, Server2003	
Kingston (V59C1512804QBF25)	DDRII 533	512MB	WinXP, Server2003	
Kingston (V59C1512804QBF25)	DDRII 800	1GB	WinXP, Server2003	

## 2.3 VGA Graphic Test

### 1. Windows XP

Item	Description	Result	Remark
1	Resolution/Color Change	PASS	
2	CRT Display Test	PASS	
3	CRT Display Quality Test	PASS	
4	LVDS Display Test	PASS	
5	Extended Display Test	PASS	
6	DVI Display Test	PASS	

### 2. Windows Vista

Item	Description	Result	Remark
1	Resolution/Color Change	PASS	
2	CRT Display Test	PASS	
3	CRT Display Quality Test	PASS	
4	LVDS Display Test	PASS	
5	Extended Display Test	PASS	
6	DVI Display Test	PASS	

## 2.4 Audio Test

### 1. Windows XP

Item	Description	Result	Remark
1	Driver Install	PASS	
2	Sound Effect	PASS	
3	Equalizer	PASS	
4	Microphone	PASS	

### 2. Windows Server 2003

Item	Description	Result	Remark
1	Driver Install	PASS	
2	Sound Effect	PASS	
3	Equalizer	PASS	
4	Microphone	PASS	

## 2.5 HDD Test

HDD Type	Operating System	HDD Size Detect	HDD Data Transfer	HDD LED Check
Western Digital WD1600JS-00MHB0 160GB	MS-DOS	PASS	PASS	PASS
HITACHI HDT722525DL380 250GB	WinServer2003	PASS	PASS	PASS
	Win XP			

## 2.6 CD-ROM Test

CD-ROM Type	Operating System	CD-ROM Detect	CD-ROM Data Transfer	PLAY DVD
LITEON DVD SOSC-2485KX	WinServer2003	PASS	PASS	PASS
LITEON DVD SOSW-833SX	Vista Win XP	PASS	PASS	PASS

## 2.7 USB Test

### 1. Windows XP

Item	Description	Result	Remark
1	Device Manager Check	PASS	
2	External USB Keyboard Test	PASS	
3	External USB Mouse Test	PASS	
4	Hot plugging test	PASS	

### 2. Windows Server 2003

Item	Description	Result	Remark
1	Device Manager Check	PASS	
2	External USB Keyboard Test	PASS	
3	External USB Mouse Test	PASS	
4	Hot plugging test	PASS	

### 3. Windows Vista

Item	Description	Result	Remark
1	Device Manager Check	PASS	
2	External USB Keyboard Test	PASS	
3	External USB Mouse Test	PASS	
4	Hot plugging test	PASS	

## 2.8 Serial Port Test

### 1. MS-DOS

Item	Description	Result	Remark
1	RS-232 Mouse Test	PASS	
2	RS-232 Modem Test	PASS	
3	B&B Electronics COM Port RS-232 Test (W/Loop-Back)	PASS	

### 2. Windows Server 2003

Item	Description	Result	Remark
1	Device Manager Check	PASS	
2	RS-232 Mouse Test	PASS	

### 3. Windows XP

Item	Description	Result	Remark
1	Device Manager Check	PASS	
2	RS-232 Mouse Test	PASS	

## 2.9 Keyboard、 Mouse Test

### 1. MS-DOS

Item	Description	Result	Remark
1	Keyboard LED Status Test	PASS	
2	Keyboard Typing Test	PASS	

### 2. Windows XP

Item	Description	Result	Remark
1	Device Manager Check	PASS	
2	Keyboard Typing Test	PASS	
3	Mouse Detect Test	PASS	

### 3. Windows Server 2003

Item	Description	Result	Remark
1	Device Manager Check	PASS	
2	Keyboard Typing Test	PASS	
3	Mouse Detect Test	PASS	

### 4. Windows Vista

Item	Description	Result	Remark
1	Device Manager Check	PASS	
2	Keyboard Typing Test	PASS	
3	Mouse Detect Test	PASS	



## 2.10 LAN Test

### 1. Windows XP SP2

Item	Description	Result	Remark
1	Device Manager Check	PASS	
2	Data Transfer Test	PASS	

### 2. Windows Server 2003

Item	Description	Result	Remark
1	Device Manager Check	PASS	
2	Data Transfer Test	PASS	

### 3. Windows Vista

Item	Description	Result	Remark
1	Device Manager Check	PASS	
2	Data Transfer Test	PASS	

## 2.11 Power Supply Test

### 1. MS-DOS 6.22

Item	Description	Verification	
		Result	Remark
1	ATX Power On/Off	PASS	Coolive AP-350F
2	ATX Power On/Off	PASS	HEC WINDMILL PRO 315W

### 2. Windows XP

Item	Description	Verification	
		Result	Remark
1	ATX Power On/Off	PASS	Coolive AP-350F
2	ATX Power On/Off	PASS	HEC WINDMILL PRO 315W

### 3. Windows Server 2003

Item	Description	Verification	
		Result	Remark
1	ATX Power On/Off	PASS	Coolive AP-350F
2	ATX Power On/Off	PASS	HEC WINDMILL PRO 315W

### 4. Windows Vista

Item	Description	Verification	
		Result	Remark
1	ATX Power On/Off	PASS	Coolive AP-350F
2	ATX Power On/Off	PASS	HEC WINDMILL PRO 315W

## 2.12 Floppy Drive Test

Floppy	Operating System	Floppy Drive Detect	Floppy Data Transfer
MITSUMI 353M3	MS-DOS Windows XP SP2 Windows Server 2003	PASS	PASS
MITSUMI 53M3D		PASS	PASS
SONY MPF920-E		PASS	PASS
MITSUMI D353T6		PASS	PASS

## 2.13 Boot Up Test

Item	Description	Result	Remark
1	Soft boot from HDD	PASS	
2	Soft boot from CD-ROM	PASS	
3	Soft boot from Floppy	PASS	
4	Reboot test with Win XP	PASS	
5	Reboot test with Win Server 2003	PASS	

## 2.14 Os Install

Item	Description	Result	Remark
1	Windows Vista	PASS	
2	Windows XP SP2	PASS	
3	Windows Server 2003	PASS	

## 2.15 Print Port Test

### 1. Window XP

Item	Description	Result	Remark
1	ECP/EPP PRINT TEST	PASS	

### 2. Window 2003

Item	Description	Result	Remark
1	ECP/EPP PRINT TEST	PASS	

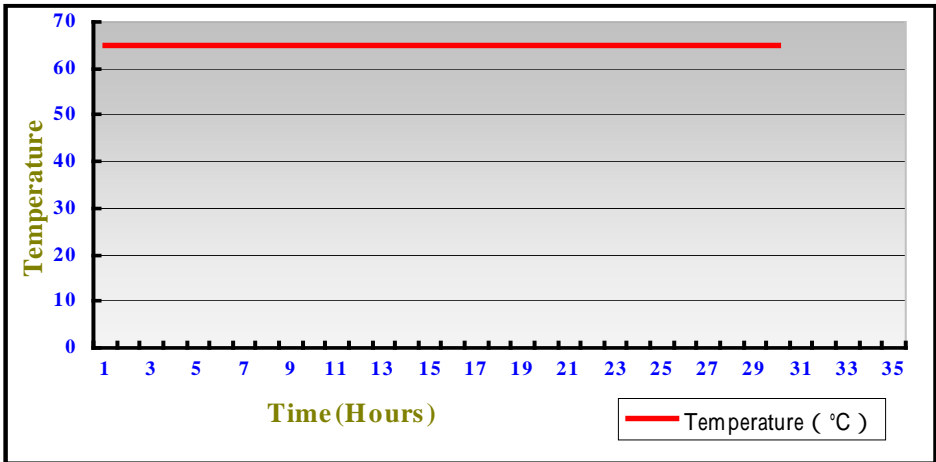
### 3. Environmental test

#### 3.1 Temperature Test

Hardware Device list:

System Board	FS-97B
CPU	Intel CORE 2 DUO 1.86GHZ
Memory	Transcend DDRII 800 1GB (K4T51083QC) Transcend DDRII 667 2GB (K4T1G084QA-ZCE6)
HDD	Western Digital WD1600JS-00MHB0 160GB
Operating OS	Windows XP
Test Equipment	THERMOTRON 2800 Programmer/Controller
Test Program	3DMark 2003

#### Test Result:



#### Boot Up Test:

Temperature	Result	Remark
-20	PASS	Times
70	PASS	Times

## 4. Reliability Test

### 4.1 Power Consumption Test

#### 1. Test Environment:

CPU	Intel PENTIUM 4 3.0 GHZ
Memory	Transcend DDRII 800 1GB (K4T51083QC) Apacer DDRII 533 1G (HYB18T512 800AF37)
HDD	Western Digital WD2500JB-00REA0
Test OS	Windows XP
Test Program	3DMARK 2003

#### Test Result:

Voltage	Current ( A )	Power ( W )	Remark
12V	7.61	91.32	
5V	6.56	32.8	
5VSB	0.04	0.2	

#### 2. Test Environment:

CPU	Intel PENTIUM 4 2.8GHZ
Memory	Transcend DDRII 800 1GB (K4T51083QC) Apacer DDRII 533 1G (HYB18T512 800AF37)
HDD	Western Digital WD1600JS-00MHB0 160GB
Test OS	Windows XP
Test Program	3DMARK 2003

#### Test Result:

Voltage	Current ( A )	Power ( W )	Remark
12V	8.32	99.84	
5V	6.84	34.2	
5VSB	0.02	0.1	

### 3. Test Environment:

CPU	Intel PENTIUM 4 2.8 GHZ
Memory	Transcend DDRII 800 1GB (K4T51083QC) Apacer DDRII 533 1G (HYB18T512 800AF37)
HDD	Western Digital WD1600JS-00MHB0 160GB
DVI	BENQ FP591
Test OS	Windows XP
Test Program	3DMARK 2003

### Test Result:

Voltage	Current ( A )	Power ( W )	Remark
12V	8.37	100.44	
5V	7.20	36	
5VSB	0.03	0.15	

### 4. Test Environment:

CPU	Intel PENTIUM 4 2.8GHZ
Memory	Transcend DDRII 800 1GB (K4T51083QC) Apacer DDRII 533 1G (HYB18T512 800AF37)
HDD	Western Digital WD1600JS-00MHB0 160GB
DVI	BENQ FP591
Test OS	Windows XP
Test Program	3DMARK 2003

### Test Result:

Voltage	Current ( A )	Power ( W )	Remark
12V	8.59	103.08	
5V	7.13	35.65	
5VSB	0.03	0.15	

## 5. Test Environment:

CPU	Intel PENTIUM 4 2.8GHZ
Memory	Transcend DDRII 800 1GB (K4T51083QC) Apacer DDRII 533 1G (HYB18T512 800AF37)
HDD	Western Digital WD1600JS-00MHB0 160GB
17" PANEL	AUO M170EG01
Test OS	Windows XP
Test Program	3DMARK 2003

## Test Result:

Voltage	Current ( A )	Power ( W )	Remark
12V	10.03	120.36	
5V	7.21	36.05	
5VSB	0.07	0.35	

## 6. Test Environment:

CPU	Intel PENTIUM 4 3.0GHZ
Memory	Transcend DDRII 800 1GB (K4T51083QC) Apacer DDRII 533 1G (HYB18T512 800AF37)
HDD	Western Digital WD1600JS-00MHB0 160GB
17" PANEL	AUO M170EG01
Test OS	Windows XP
Test Program	3DMARK 2003

## Test Result:

Voltage	Current ( A )	Power ( W )	Remark
12V	9.58	114.96	
5V	7.11	35.55	
5VSB	0.04	0.2	



## 7. Test Environment:

CPU	Intel PENTIUM 4 2.8GHZ
Memory	Transcend DDRII 800 1GB (K4T51083QC) Apacer DDRII 533 1G (HYB18T512 800AF37)
HDD	Western Digital WD1600JS-00MHB0 160GB
17" PANEL	AUO M170EG01
Test OS	Windows XP
Test Program	3DMARK 2003

## Test Result:

Voltage	Current ( A )	Power ( W )	Remark
12V	9.94	119.28	
5V	7	35	
5VSB	0.05	0.35	

## 8. Test Environment:

CPU	Intel Core 2 Duo 1.86GHZ
Memory	Transcend DDRII 800 1GB (K4T51083QC)
HDD	Western Digital WD1600JS-00MHB0 160GB
17" PANEL	AUO M170EG01
Test OS	Windows XP
Test Program	3DMARK 2003

## Test Result:

Voltage	Current ( A )	Power ( W )	Remark
12V	4.48	53.76	
5V	7	35	
5VSB	0.02	0.1	

### 9. Test Environment:

Motherboard	<b>FS-97B</b>
CPU	<b>Intel Core 2 Duo 1.86GHZ</b>
Memory	<b>Transcend DDRII 800 1GB (K4T51083QC)</b>
Power Supply	<b>HEC WINDMILL PRO 315W</b>

<b>Voltage</b>	<b>Current ( A )</b>	<b>Power ( W )</b>	<b>Remark</b>
<b>12V</b>	2.22	26.64	Boot Up
<b>5V</b>	4.56	22.8	Boot Up
<b>5Vsb</b>	0	0	Boot Up

### 10. Test Environment:

Motherboard	<b>FS-97B</b>
CPU	<b>Intel PENTIUM 4 3.0GHZ</b>
Memory	<b>Transcend DDRII 800 1GB (K4T51083QC)</b>
Power Supply	<b>HEC WINDMILL PRO 315W</b>

<b>Voltage</b>	<b>Current ( A )</b>	<b>Power ( W )</b>	<b>Remark</b>
<b>12V</b>	6.72	80.64	Boot Up
<b>5V</b>	4.72	23.6	Boot Up
<b>5Vsb</b>	0.01	0.05	Boot Up

## 11. Test Environment:

Motherboard	<b>FS-97B</b>
CPU	<b>Intel PENTIUM D 2.8GHZ</b>
Memory	<b>Transcend DDRII 800 1GB (K4T51083QC)</b>
Power Supply	<b>HEC WINDMILL PRO 315W</b>

<b>Voltage</b>	<b>Current ( A )</b>	<b>Power ( W )</b>	<b>Remark</b>
<b>12V</b>	6.85	82.2	Boot Up
<b>5V</b>	4.93	24.65	Boot Up
<b>5Vsb</b>	0.01	0.05	Boot Up

### 4.3 Thermal measurements at various points on the board

#### Test Environment :

CPU	Intel CORE 2 DUO 1.86GHZ
Memory	Transcend DDRII 667 2GB (K4T1G084QA-ZCE6)
HDD	HITACHI HDT722525DL380 250GB
Power	Coolive AP-350F
Operating System	Windows XP
Test Program	3D WinMark2003

#### Test Result:

CPU	28.7°C
Q965 (Northbridge)	52.2°C
ICH8DO (Southbridge)	49°C
U5	50.6°C
U9	44.8°C
U13	51.3°C
U16	55.9°C
U18	43.4°C
U22	60.8°C

**Test Environment :**

CPU	Intel PENTIUM 4 3.0GHZ
Memory	Transcend DDRII 667 2GB (K4T1G084QA-ZCE6) Transcend DDRII 800 1GB (K4T51083QC)
HDD	HDD WD1600JS-00MHB0 160GB
Power	Coolive AP-350F
Operating System	Windows XP
Test Program	3D WinMark2003

**Test Result:**

CPU	33.5°C
Q965 (Northbridge)	45.3°C
ICH8DO (Southbridge)	55°C
U5	52.4°C
U9	44.8°C
U13	52.5°C
U16	42.4°C
U18	43.4°C
U22	42.3°C

## 5. Performance Test

### 5.1 Business Win Stone 2002

Windows XP SP2

WEIGHTED SUITE	Test Environment	Result	Remark
<b>Business Win stone2002</b>	Intel PENTIUM 4 3.0GHZ Transcend DDRII 667 2GB (K4T1G084QA-ZCE6) WD1600JS-00MHB0 160GB	Pass	31.3 31.6 31.2
<b>Business Win stone2002</b>	Intel PENTIUM 4 3.0GHZ Kingston DDRII 800 512MB (V59C1512804QBF25) Kingston DDRII 800 1MB (V59C1512804QBF25) Western Digital WD1600JS-00MHB0 160GB	Pass	31.6 32.1 31.8 31.4 31.3
<b>Business Win stone2002</b>	Intel CORE 2 DUO 1.86GHZ Kingston DDRII 800 1MB (V59C1512804QBF25) Western Digital WD1600JS-00MHB0 160GB	PASS	37.7 37.2 36.7 36.5 36..1
<b>Business Win stone2002</b>	Intel CORE 2 DUO 1.86GHZ Transcend DDRII 667 2GB (K4T1G084QA-ZCE6) Transcend DDRII 667 2GB (K4T1G084QA-ZCE6)	PASS	37.1 36.7 37.5

	Western Digital WD1600JS-00MHB0 160GB		
--	--	--	--

## 5.2 Business Win Stone 2004

### Windows XP SP2

WEIGHTED SUITE	Test Environment	Result	Remark
<b>Business Win stone2004</b>	Intel PENTIUM 4 3.0GHZ	Pass	
	Transcend DDRII 667 2GB		12
	(K4T1G084QA-ZCE6)		10.3
	Kingston DDRII 533 1GB		18.8
	(HYNIX HY5PS12821B)		18.8
HITACHII HDT722525DL380 250GB		12.1	
<b>Business Win stone2004</b>	Intel PENTIUM 4 3.0GHZ	PASS	
	Transcend DDRII 800 1GB		8.6
	(K4T51083QC)		13.3
	Kingston DDRII 800 1GB		14.6
	(V59C1512804QBF25)		9.9
Western Digital WD1600JS-00MHB0 160GB		15.5	
<b>Business Win stone2004</b>	Intel PENTIUM 4 3.0GHZ	PASS	
	Kingston DDRII 800 1GB		12.1
	(V59C1512804QBF25)		18.6
	Kingston DDRII 800 1GB		20
	(V59C1512804QBF25)		16.5
Western Digital WD1600JS-00MHB0 160GB			

## 5.3 Content Creation Winstone

Windows XP XP2

WEIGHTED SUITE	Test Environment	Result	Remark
<b>Content Creation Winstone 2000</b>	Intel CORE 2 DUO 1.86GHZ	Pass	97
	Kingston DDRII 800 1GB (hyinx HY5PS12821)		102.4
	HITACHII HDT722525DL380		103.2
	250GB		102.6
			102.5
<b>Content Creation Winstone 2001</b>	Intel PENTIUM 4 3.0GHZ	PASS	104.1
	Transcend DDRII 800 1GB (K4T51083QC)		104
	WD1600JS-00MHB0 160GB		105
			105.5
			102.3

## 5.4 3D MARK

Windows XP SP2

WEIGHTED SUITE	Test Environment	Result	Remark
----------------	------------------	--------	--------



<b>3DMARK2001 Scores</b>	Intel PENTIUM D 2.8GHZ Transcend DDRII 800 1GB (K4T51083QC)	Pass	876
<b>3DMARK2003 Scores</b>	Western Digital WD1600JS-00MHB0 160GB	Pass	568

### Windows XP SP2

<b>WEIGHTED SUITE</b>	<b>Test Environment</b>	<b>Result</b>	<b>Remark</b>
<b>3DMARK2003 Scores</b>	Intel CORE 2 DUO 1.86GHZ Transcend DDRII 667 2GB (K4T1G084QA-ZCE6)	Pass	1331
<b>3DMARK2005 Scores</b>	HITACHI HDT722525DL380 250GB	Pass	312

## 5.5 3D MARK2006

### Windows XP SP2

<b>Item</b>	<b>WEIGHTED SUITE</b>	<b>Test Environment</b>	<b>Result</b>	<b>Remark</b>
-------------	-----------------------	-------------------------	---------------	---------------

1	<b>3DMARK Source</b>	Intel CORE 2 DUO 1.86GHZ Transcend DDRII 667 2GB (K4T1G084QA-ZCE6) HITACHII HDT722525DL380 250GB	Pass	204
2	<b>SM2.0 Source</b>		Pass	93
3	<b>HDR/SM3.0 Source</b>		Pass	N/A
4	<b>CPU Source</b>		Pass	1579

Item	WEIGHTED SUITE	Test Environment	Result	Remark
1	<b>3DMARK Source</b>	Intel PENTIUM D 2.8GHZ Transcend DDRII 800 1GB (K4T51083QC) Western Digital WD1600JS-00MHB0 160GB	Pass	229
2	<b>SM2.0 Source</b>		Pass	105
3	<b>HDR/SM3.0 Source</b>		Pass	N/A
4	<b>CPU Source</b>		Pass	1393

### Windows XP SP2

Item	WEIGHTED SUITE	Test Environment	Result	Remark
1	<b>3DMARK Source</b>	Intel PENTIUM D 2.8GHZ	Pass	229

2	<b>SM2.0 Source</b>	Transcend DDRII 800 1GB (K4T51083QC) Western Digital WD1600JS-00MHB0 160GB	Pass	105
3	<b>HDR/SM3.0 Source</b>		Pass	N/A
4	<b>CPU Source</b>		Pass	1393

## 5.6 PC MARK2002

<b>Test Environment</b>
-------------------------

Intel PENTIUM 4 2.8GHZ  
Transcend DDRII 800 1GB (K4T51083QC)  
Western Digital WD1600JS-00MHB0 160GB

### Windows XP SP2

Item	WEIGHTED SUITE	Result	Remark
1	CPU test Source	Pass	5961
2	Memory test Source	Pass	10209
3	HDD test Source	Pass	1477

### Test Environment

Intel CORE 2 DUO 1.86GHZ  
Transcend DDRII 667 2GB (K4T1G084QA-ZCE6)  
HITACHI HDT722525DL380 250GB

### Windows XP SP2

Item	WEIGHTED SUITE	Result	Remark
1	CPU test Source	Pass	7338
2	Memory test Source	Pass	14918
3	HDD test Source	Pass	1444

### Test Environment

Intel PENTIUM 4 3.0GHZ

Transcend DDRII 800 1GB (K4T51083QC)  
Western Digital WD1600JS-00MHB0 160GB

### Windows XP SP2

Item	WEIGHTED SUITE	Result	Remark
1	CPU test Source	Pass	6396
2	Memory test Source	Pass	9800
3	HDD test Source	Pass	1504

### 5.7 PC MARK2004

Test Environment
Intel PENTIUM 4 2.8GHZ Transcend DDRII 800 1GB (K4T51083QC) Western Digital WD1600JS-00MHB0 160GB

### Windows XP

Item	WEIGHTED SUITE	Result	Remark
1	System test Source	Pass	N/A
2	CPU test Source	Pass	N/A
3	Memory test Source	Pass	4653
4	Graphic test Source	Pass	1360
5	HDD test Source	Pass	5135

Test Environment
------------------

Intel CORE 2 DUO 1.86GHZ  
 Transcend DDRII 667 2GB (K4T1G084QA-ZCE6)  
 HITACHII HDT722525DL380 250GB

**Windows XP**

Item	WEIGHTED SUITE	Result	Remark
1	System test Source	Pass	N/A
2	CPU test Source	Pass	N/A
3	Memory test Source	Pass	5232
4	Graphic test Source	Pass	1523
5	HDD test Source	Pass	5152

**Test Environment**

Intel PENTIUM 4 3.0GHZ  
 Transcend DDRII 800 1GB (K4T51083QC)  
 Western Digital WD1600JS-00MHB0 160GB

**Windows XP**

Item	WEIGHTED SUITE	Result	Remark
1	System test Source	Pass	N/A
2	CPU test Source	Pass	N/A
3	Memory test Source	Pass	4896
4	Graphic test Source	Pass	1110
5	HDD test Source	Pass	5194

## 5.8 PC MARK2005

<b>Test Environment</b>
Intel PENTIUM 4 2.8GHZ Transcend DDRII 800 1GB (K4T51083QC) Western Digital WD1600JS-00MHB0 160GB

### Windows XP SP2

<b>Item</b>	<b>WEIGHTED SUITE</b>	<b>Result</b>	<b>Remark</b>
1	System test Source	Pass	N/A
2	CPU test Source	Pass	4631
3	Memory test Source	Pass	3748
4	Graphic test Source	Pass	N/A
5	HDD test Source	Pass	5502

<b>Test Environment</b>
Intel CORE 2 DUO 1.86GHZ Transcend DDRII 667 2GB (K4T1G084QA-ZCE6) HITACHII HDT722525DL380 250GB

### Windows XP SP2

<b>Item</b>	<b>WEIGHTED SUITE</b>	<b>Result</b>	<b>Remark</b>
1	System test Source	Pass	N/A
2	CPU test Source	Pass	4791
3	Memory test Source	Pass	4182
4	Graphic test Source	Pass	N/A
5	HDD test Source	Pass	5538

<b>Test Environment</b>
Intel PENTIUM 4 2.8GHZ Transcend DDRII 800 1GB (K4T51083QC) Western Digital WD1600JS-00MHB0 160GB

### **Windows XP SP2**

<b>Item</b>	<b>WEIGHTED SUITE</b>	<b>Result</b>	<b>Remark</b>
1	System test Source	Pass	N/A
2	CPU test Source	Pass	3535
3	Memory test Source	Pass	3941
4	Graphic test Source	Pass	N/A
5	HDD test Source	Pass	5424