

FS-97C

Test Report

Version: 1.11

2008/08/21



Test Engineer:

Identify:

Index

1. Function Test.....	4
1.1 Hardware Function	4
1.2 BIOS Function	8
1.3 Driver.....	10
2. Compatibility Test.....	13
2.1 CPU Test.....	13
2.2 Memory Test.....	15
2.3 VGA Graphic Test.....	19
2.4 Audio Test.....	21
2.5 HDD Test.....	23
2.6 CD-ROM Test.....	26
2.7 USB Test.....	30
2.8 Serial Port Test.....	32
2.9 Keyboard 、 Mouse Test	35
2.10 LAN Test.....	38
2.11 Power Supply Test	40
2.12 Floppy Drive Test	44
2.13 Boot Up Test	46
2.14 Os Install.....	47
2.15 Print Port Test	48
3. Environmental Test	49
3.1 Temperature Test.....	49
4. Reliability Test	51
4.1 Power Consumption Test	51
4.2 Thermal measurements at various points on the board	54
5. Performance Test.....	55

5.1 Win Bench 99 Version 1.1	55
5.2 Win Stone 99 Version 1.1.....	56
5.3 Business WinStone.....	57
5.4 Content Creation WinStone	58
5.5 3D MARK	59
5.6 3D MARK2006 Professional Edition 1.1.0	59
5.7 PC Mark2002 Pro-Build 100	61
5.8 PC MARK2004 Version 1.3.0.....	61
5.9 PC MARK2005 Version 1.2.0.....	62

1. Function Test

1.1 Hardware Function

Base Function Test

Item	Description	Result	Remark
1	Power Button	Pass	
2	Reset	Pass	
3	Power LED	Pass	
4	HDD LED	Pass	
5	BUZZER	Pass	
6	IDE Primary Master	Pass	
7	IDE Primary Slave	Pass	
8	IDE Primary Master	Pass	
9	IDE Primary Slave	Pass	
10	Serial ATA 1 connector	Pass	
11	Serial ATA 2 connector	Pass	
12	DDR2 SDRAM DIMM 1 socket	Pass	
13	DDR2 SDRAM DIMM 2 socket	Pass	
14	Floppy connector	Pass	
15	Keyboard connector	Pass	
16	Mouse connector	Pass	
17	VGA Port	Pass	
18	Audio connector	Pass	CN_AUDIO
19	CD-ROM audio input connector	Pass	CDIN
20	COM1 connector	Pass	
21	COM2 connector	Pass	

22	USB1 connector	Pass	
23	USB2 connector	Pass	
24	USB3 connector	Pass	
25	USB4 connector	Pass	
26	Giga LAN1 connector	Pass	
27	Giga LAN2 connector	Pass	
28	LPT connector	Pass	CN_LPT
29	Mini-PCI 1 socket	Pass	
30	Mini-PCI 2 socket	Pass	
31	Compact Flash TYPE-II socket	Pass	
32	IrDA connector	Pass	
33	HDTV interface	Pass	CN_HDTV
34	TMDS connector	Pass	CN_DVI
35	Digital I/O connector	Pass	CN_DIO
36	AT Keyboard Port	Pass	CN_ATKB
37	LVDS connector	Pass	CN_LVDS
38	LCD inverter connector	Pass	CN_INV
39	AT power supply connector	Pass	DC_IN
40	ATX function connector	Pass	CN_PS
41	CPU cooler fan connector	Pass	CPUFAN
42	system cooler fan connector	Pass	SYSFAN

Jumper

1	CMOS Operating/Clear Setting	Pass	JRTC
2	CRT attach select setting	Pass	JCRT
3	front panel switch/indicator connector	Pass	JFRNT
4	COM2 RS232/422/485 mode setting	Pass	JCSEL1
		Pass	JCSEL2
5	LCD Panel Voltage Setting	Pass	JVLCD

· 1.2 BIOS Function By Advanced Chipset Features

Item	Description	Result	Remark
1	Virus Warning	Pass	
2	CPU L1& L2 Cache	Pass	
3	Quick Power On Self Test	Pass	
4	First Boot Device	Pass	
5	Second Boot Device	Pass	
6	Third Boot Device	Pass	
7	Boot Other Device	Pass	
8	Swap Floppy Drive	Pass	
9	Boot Up Floppy Seek	Pass	
10	Boot Up NumLock Status	Pass	
11	Typematic Rate Setting	Pass	
12	Typematic Rate (Chars/Sec)	Pass	
13	Typematic Rate (Msec)	Pass	
14	Security Option	Pass	

1.2 BIOS Function

Item	Description	Result	Remar
1	Press 'Del' to run Setup Utility	Pass	
2	Ctrl-Alt-Del – Soft-Reboot	Pass	
3	Save & Exit Setup	Pass	
4	Date & Time Setting	Pass	
5	Drive A	Pass	
6	Hard Disk Boot Priority	Pass	
7	Quick Power On Self Test	Pass	
8	Boot Other Device	Pass	
9	Boot Up Floppy Seek	Pass	
10	Boot Up Num Lock Status	Pass	
11	VGA Control	Pass	
12	On Chip Frame Buffer Size	Pass	
13	Boot Display	Pass	
14	On Chip Primary IDE	Pass	
15	On Chip Serial ATA	Pass	
16	USB Controller	Pass	
17	USB 2.0 Controller	Pass	
18	USB Keyboard Support	Pass	
19	Azalia Audio	Pass	
20	Onboard LAN1 Control	Pass	
21	POWER ON Function	Pass	
22	Onboard FDC Controller	Pass	
23	PWRON After PWR-Fail	Pass	
24	Watch Dog Timer Select	Pass	
25	ACPI Function	Pass	

26	ACPI Suspend Type	Pass	
27	Soft-Off by PWRBTN	Pass	
28	Wake-Up On LAN.	Pass	
29	Power On by Ring	Pass	
30	Resume by Alarm	Pass	
31	Init Display First	Pass	
32	CPU Warning Temperature	Pass	

1.3 Driver

1. Windows Vista Driver Test

Item	Description	Result	Remark
1	Chipset Driver	Pass	
2	VGA Driver	Pass	
3	Audio Driver	Pass	
4	LAN Driver	Pass	

2. Windows Vista 64bit Driver Test

Item	Description	Result	Remark
1	Chipset Driver	Pass	
2	VGA Driver	Pass	
3	Audio Driver	Pass	
4	LAN Driver	Pass	

3. Windows XP Professional SP2 Driver Test

Item	Description	Result	Remark
1	Chipset Driver	Pass	
2	VGA Driver	Pass	
3	Audio Driver	Pass	
4	LAN Driver	Pass	

4. Windows XP Professional x64 Edition Version 2003 SP1 Driver Test

Item	Description	Result	Remark
1	Chipset Driver	Pass	
2	VGA Driver	Pass	
3	Audio Driver	Pass	
4	LAN Driver	Pass	

5. Windows 2000 Professional Driver Test

Item	Description	Result	Remark
1	Chipset Driver	Pass	
2	VGA Driver	Pass	
3	Audio Driver	Pass	
4	LAN Driver	Pass	

6. Windows Server 2000 Driver Test

Item	Description	Result	Remark
1	Chipset Driver	Pass	
2	VGA Driver	Pass	
3	Audio Driver	Pass	
4	LAN Driver	Pass	

7. Windows Server 2003 Driver Test

Item	Description	Result	Remark
1	Chipset Driver	Pass	
2	VGA Driver	Pass	
3	Audio Driver	Pass	
4	LAN Driver	Pass	

8. LINUX SUSE 10.1 Driver Test

Item	Description	Result	Remark
1	Chipset Driver	Pass	
2	VGA Driver	Pass	
3	Audio Driver	Pass	
4	LAN Driver	Pass	

9. Red Hat 9.0 Driver Test

Item	Description	Result	Remark
1	Chipset Driver	Pass	

2	VGA Driver	Pass	
3	Audio Driver	Pass	
4	LAN Driver	Pass	

10. Fedora 5 Driver Test

Item	Description	Result	Remark
1	Chipset Driver	Pass	
2	VGA Driver	Pass	
3	Audio Driver	Pass	
4	LAN Driver	Pass	

2. Compatibility Test

2.1 CPU Test

CPU	Operating System	Result	Remark
Celeron M 410 /1M/ 1.46 GHz	MS-DOS	Pass	
	Windows Vista	Pass	
	Windows Professional XP SP2	Pass	
	Windows 2000 Professional	Pass	
	Windows Server 2000	Pass	
	Windows Server 2003	Pass	
	LINUX SUSE 10.1	Pass	
Celeron M 420 /1M/ 1.6 GHz	MS-DOS	Pass	
	Windows Vista	Pass	
	Windows Professional XP SP2	Pass	
	Windows 2000 Professional	Pass	
	Windows Server 2000	Pass	
	Windows Server 2003	Pass	
	LINUX SUSE 10.1	Pass	
Celeron M 520 /1M/ 1.6 GHz	LINUX Red Hat 9.0	Pass	
	MS-DOS	Pass	
	Windows Vista	Pass	
	Windows Professional XP SP2	Pass	
Celeron M 520 /1M/ 1.6 GHz	Windows 2000 Professional	Pass	

	Windows Server 2000	Pass	
	Windows Server 2003	Pass	
	LINUX SUSE 10.1	Pass	
	LINUX Red Hat 9.0	Pass	
Core Solo processor T1400 /32K /2M / 1.83 GHz	MS-DOS	Pass	
	Windows Vista	Pass	
	Windows Professional XP SP2	Pass	
	Windows 2000 Professional	Pass	
	Windows Server 2000	Pass	
	Windows Server 2003	Pass	
	LINUX SUSE 10.1	Pass	
	LINUX Red Hat 9.0	Pass	
Core Duo processor T2050 /32K /2M / 1.6 GHz	MS-DOS	Pass	
	Windows Vista	Pass	
	Windows Professional XP SP2	Pass	
	Windows 2000 Professional	Pass	
	Windows Server 2000	Pass	
	Windows Server 2003	Pass	
	LINUX SUSE 10.1	Pass	
	LINUX Red Hat 9.0	Pass	
	LINUX Fedora 6	Pass	

2.2 Memory Test

DDRII DRAM	DDRII Freq	Capacity Mbytes	Operating System	Result
Transcend (TS256MLQ64V 5U)	DDRII533	2GB	Windows Vista	Pass
			Windows Vista 64bit	Pass
			Windows XP Professional SP2	Pass
			Windows XP Professional x64 Edition Version 2003 SP1	Pass
			Windows 2000 Professional	Pass
			Windows Server 2000	Pass
			Windows Server 2003	Pass
			LINUX SUSE 10.1	Pass
LINUX Red Hat9.0	Pass			
Transcend (E1108AA-5C-E)	DDRII533	2GB	Windows Vista	Pass
			Windows Vista 64bit	Pass
			Windows XP Professional SP2	Pass
			Windows XP Professional x64 Edition Version 2003 SP1	Pass
			Windows 2000 Professional	Pass
			Windows Server 2000	Pass
			Windows Server 2003	Pass

			LINUX SUSE 10.1	Pass
			LINUX Red Hat9.0	Pass
Transcend (K4T1G084QA-ZCE6)	DDRII667	2GB	Windows Vista	Pass
			Windows Vista 64bit	Pass
			Windows XP Professional SP2	Pass
			Windows XP Professional x64 Edition Version 2003 SP1	Pass
			Windows 2000 Professional	Pass
			Windows Server 2000	Pass
			Windows Server 2003	Pass
			LINUX SUSE 10.1	Pass
			LINUX Red Hat9.0	Pass
Transcend (K4T51083QC)	DDRII800	1GB	Windows Vista	Pass
			Windows Vista 64bit	Pass
			Windows XP Professional SP2	Pass
			Windows XP Professional x64 Edition Version 2003 SP1	Pass
			Windows 2000 Professional	Pass
			Windows Server 2000	Pass
			Windows Server 2003	Pass
			LINUX SUSE 10.1	Pass
			LINUX Red Hat9.0	Pass
Transcend (A3R12E3HEF)	DDRII800	1GB	Windows Vista	Pass
			Windows Vista 64bit	Pass

726BLBOK/726 BLBO3)			Windows XP Professional SP2	Pass
			Windows XP Professional x64 Edition Version 2003 SP1	Pass
			Windows 2000 Professional	Pass
			Windows Server 2000	Pass
			Windows Server 2003	Pass
			LINUX SUSE 10.1	Pass
			LINUX Red Hat9.0	Pass
A-DATA M2OEL2G3H31 10A1B0Z (E5108AB-5C-E)	DDRII667	512MB	Windows Vista	Pass
			Windows Vista 64bit	Pass
			Windows XP Professional SP2	Pass
			Windows XP Professional x64 Edition Version 2003 SP1	Pass
			Windows 2000 Professional	Pass
			Windows Server 2000	Pass
			Windows Server 2003	Pass
			LINUX SUSE 10.1	Pass
LINUX Red Hat9.0	Pass			
Kingston KVR667D2N5 (E5108AE-6E-E)	DDRII667	1GB	Windows Vista	Pass
			Windows Vista 64bit	Pass
			Windows XP Professional SP2	Pass
			Windows XP Professional x64 Edition Version 2003 SP1	Pass

			Windows 2000 Professional	Pass
			Windows Server 2000	Pass
			Windows Server 2003	Pass
			LINUX SUSE 10.1	Pass
			LINUX Red Hat9.0	Pass
Kingston KVR800D2N5 (V59C1512804 QBF25)	DDRII800	512MB	Windows Vista	Pass
			Windows Vista 64bit	Pass
			Windows XP Professional SP2	Pass
			Windows XP Professional x64 Edition Version 2003 SP1	Pass
			Windows 2000 Professional	Pass
			Windows Server 2000	Pass
			Windows Server 2003	Pass
			LINUX SUSE 10.1	Pass
			LINUX Red Hat9.0	Pass
DSL (E5116AF-5C-E)	DDRII400	256MB *2	Windows Vista	Pass
			Windows Vista 64bit	Pass
			Windows XP Professional SP2	Pass
			Windows XP Professional x64 Edition Version 2003 SP1	Pass
			Windows 2000 Professional	Pass
			Windows Server 2000	Pass
			Windows Server 2003	Pass
			LINUX SUSE 10.1	Pass

			LINUX Red Hat9.0	Pass
--	--	--	-------------------------	------

2.3 VGA Graphic Test

1. Windows Vista

Item	Description	Result	Remark
1	Resolution/Color Change	Pass	
2	CRT Display Test	Pass	
3	CRT Display Quality Test	Pass	
4	LVDS Display Test	Pass	
5	Extended Display Test	Pass	

2. Windows Vista 64bit

Item	Description	Result	Remark
1	Resolution/Color Change	Pass	
2	CRT Display Test	Pass	
3	CRT Display Quality Test	Pass	
4	LVDS Display Test	Pass	
5	Extended Display Test	Pass	

3. Windows XP Professional SP2

Item	Description	Result	Remark
1	Resolution/Color Change	Pass	
2	CRT Display Test	Pass	
3	CRT Display Quality Test	Pass	
4	LVDS Display Test	Pass	
5	Extended Display Test	Pass	

4. Windows XP Professional x64 Edition Version 2003 SP1

Item	Description	Result	Remark
1	Resolution/Color Change	Pass	
2	CRT Display Test	Pass	
3	CRT Display Quality Test	Pass	
4	LVDS Display Test	Pass	
5	Extended Display Test	Pass	

5. Windows 2000 Professional

Item	Description	Result	Remark
1	Resolution/Color Change	Pass	
2	CRT Display Test	Pass	
3	CRT Display Quality Test	Pass	
4	LVDS Display Test	Pass	
5	Extended Display Test	Pass	

6. Windows Server 2000

Item	Description	Result	Remark
1	Resolution/Color Change	Pass	

2	CRT Display Test	Pass	
3	CRT Display Quality Test	Pass	
4	LVDS Display Test	Pass	
5	Extended Display Test	Pass	

7. Windows Server 2003

Item	Description	Result	Remark
1	Resolution/Color Change	Pass	
2	CRT Display Test	Pass	
3	CRT Display Quality Test	Pass	
4	LVDS Display Test	Pass	
5	Extended Display Test	Pass	

2.4 Audio Test

1. Windows Vista

Item	Description	Result	Remark
1	Sound Effect	Pass	
2	Equalizer	Pass	
3	Microphone	Pass	

4	5.1 channel test	Pass	NO Support
---	------------------	------	------------

2. Windows Vista 64bit

Item	Description	Result	Remark
1	Sound Effect	Pass	
2	Equalizer	Pass	
3	Microphone	Pass	
4	5.1 channel test	Pass	NO Support

3. Windows XP Professional SP2

Item	Description	Result	Remark
1	Sound Effect	Pass	
2	Equalizer	Pass	
3	Microphone	Pass	
4	5.1 channel test	Pass	

4. Windows XP Professional x64 Edition Version 2003 SP1

Item	Description	Result	Remark
1	Sound Effect	Pass	
2	Equalizer	Pass	
3	Microphone	Pass	
4	5.1 channel test	Pass	

5. Windows 2000 Professional

Item	Description	Result	Remark
1	Sound Effect	Pass	
2	Equalizer	Pass	
3	Microphone	Pass	

4	5..1 channel test	Pass	
---	-------------------	------	--

6. Windows Server 2000

Item	Description	Result	Remark
1	Sound Effect	Pass	
2	Equalizer	Pass	
3	Microphone	Pass	
4	5..1 channel test	Pass	

7. Windows Server 2003

Item	Description	Result	Remark
1	Sound Effect	Pass	
2	Equalizer	Pass	
3	Microphone	Pass	
4	5..1 channel test	Pass	

2.5 HDD Test

HDD Type	Operating System	HDD Size Detect	HDD Data Transfer	HDD LED Check
Maxtor	MS-DOS	Pass	Pass	Pass

E1GFHHZE 40GB	Windows Vista	Pass	Pass	Pass
	Windows Vista 64bit	Pass	Pass	Pass
	Windows XP Professional SP2	Pass	Pass	Pass
	Windows XP Professional x64 Edition Version 2003 SP1	Pass	Pass	Pass
	Windows 2000 Professional	Pass	Pass	Pass
	Windows Server 2000	Pass	Pass	Pass
	Windows Server 2003	Pass	Pass	Pass
	LINUX SUSE 10.1	Pass	Pass	Pass
	LINUX Red Hat 9.0	Pass	Pass	Pass
Western Digital WD250JB-00REA 0 (250GBytes)	MS-DOS	Pass	Pass	Pass
	Windows Vista	Pass	Pass	Pass
	Windows Vista 64bit	Pass	Pass	Pass
	Windows XP Professional SP2	Pass	Pass	Pass
	Windows XP Professional x64 Edition Version 2003 SP1	Pass	Pass	Pass
	Windows 2000 Professional	Pass	Pass	Pass
	Windows Server 2000	Pass	Pass	Pass
	Windows Server 2003	Pass	Pass	Pass
	LINUX SUSE 10.1	Pass	Pass	Pass
	LINUX Red Hat 9.0	Pass	Pass	Pass
	LINUX Fedora 6	Pass	Pass	Pass
Western Digital	MS-DOS	Pass	Pass	Pass

WD250KS-00MJB 0 (250GBytes) (SATA)	Windows Vista	Pass	Pass	Pass
	Windows Vista 64bit	Pass	Pass	Pass
	Windows XP Professional SP2	Pass	Pass	Pass
	Windows XP Professional x64 Edition Version 2003 SP1	Pass	Pass	Pass
	Windows 2000 Professional	Pass	Pass	Pass
	Windows Server 2000	Pass	Pass	Pass
	Windows Server 2003	Pass	Pass	Pass
	LINUX Red Hat 9.0	Pass	Pass	Pass
Seagate 80GBytes ST380011A	MS-DOS	Pass	Pass	Pass
	Windows Vista	Pass	Pass	Pass
	Windows Vista 64bit	Pass	Pass	Pass
	Windows XP Professional SP2	Pass	Pass	Pass
	Windows XP Professional x64 Edition Version 2003 SP1	Pass	Pass	Pass
	Windows 2000 Professional	Pass	Pass	Pass
	Windows Server 2000	Pass	Pass	Pass
	Windows Server 2003	Pass	Pass	Pass
	LINUX SUSE 10.1	Pass	Pass	Pass
	LINUX Red Hat 9.0	Pass	Pass	Pass
	LINUX Fedora 5	Pass	Pass	Pass
LINUX Fedora 6	Pass	Pass	Pass	

2.6 CD-ROM Test

CD-ROM Type	Operating System	CD-ROM Detect	CD-ROM Data Transfer	PLAY DVD
Benq CB523C	MS-DOS	Pass	Pass	Pass
	Windows Vista	Pass	Pass	Pass
	Windows Vista 64bit	Pass	Pass	Pass

	Windows XP Professional SP2	Pass	Pass	Pass
	Windows XP Professional x64 Edition Version 2003 SP1	Pass	Pass	Pass
	Windows 2000 Professional	Pass	Pass	Pass
	Windows Server 2000	Pass	Pass	Pass
	Windows Server 2003	Pass	Pass	Pass
	LINUX SUSE 10.1	Pass	Pass	Pass
	LINUX Red Hat 9.0	Pass	Pass	Pass
LEMEL LCD-5200S	MS-DOS	Pass	Pass	Pass
	Windows Vista	Pass	Pass	Pass
	Windows Vista 64bit	Pass	Pass	Pass
	Windows XP Professional SP2	Pass	Pass	Pass
	Windows XP Professional x64 Edition Version 2003 SP1	Pass	Pass	Pass
	Windows 2000 Professional	Pass	Pass	Pass
	Windows Server 2000	Pass	Pass	Pass
	Windows Server 2003	Pass	Pass	Pass
	LINUX SUSE 10.1	Pass	Pass	Pass

	LINUX Red Hat 9.0	Pass	Pass	Pass
	LINUX Fedora Core 5	Pass	Pass	Pass
ASUS CD-S400/A	MS-DOS	Pass	Pass	Pass
	Windows Vista	Pass	Pass	Pass
	Windows Vista 64bit	Pass	Pass	Pass
	Windows XP Professional SP2	Pass	Pass	Pass
	Windows XP Professional x64 Edition Version 2003 SP1	Pass	Pass	Pass
	Windows 2000 Professional	Pass	Pass	Pass
	Windows Server 2000	Pass	Pass	Pass
	Windows Server 2003	Pass	Pass	Pass
	LINUX SUSE 10.1	Pass	Pass	Pass
	LINUX Red Hat 9.0	Pass	Pass	Pass
	LINUX Fedora Core 5	Pass	Pass	Pass
Teac DW-224E USB 2.0 External Slim Line DVD/CD-RW	MS-DOS	Pass	Pass	Pass
	Windows Vista	Pass	Pass	Pass
	Windows Vista 64bit	Pass	Pass	Pass
	Windows XP Professional SP2	Pass	Pass	Pass

Combo	Windows XP Professional x64 Edition Version 2003 SP1	Pass	Pass	Pass
	Windows 2000 Professional	Pass	Pass	Pass
	Windows Server 2000	Pass	Pass	Pass
	Windows Server 2003	Pass	Pass	Pass
	LINUX SUSE 10.1	Pass	Pass	Pass
	LINUX Red Hat 9.0	Pass	Pass	Pass
	LINUX Fedora Core 5	Pass	Pass	Pass
LITEON SOSC-2485KX USB 2.0 CD-R/ RW /DVD-ROM Combo	MS-DOS	Pass	Pass	Pass
	Windows Vista	Pass	Pass	Pass
	Windows Vista 64bit	Pass	Pass	Pass
	Windows XP Professional SP2	Pass	Pass	Pass
	Windows XP Professional x64 Edition Version 2003 SP1	Pass	Pass	Pass
	Windows 2000 Professional	Pass	Pass	Pass
	LINUX SUSE 10.1	Pass	Pass	Pass
	LINUX Red Hat 9.0	Pass	Pass	Pass
	LINUX Fedora Core 5	Pass	Pass	Pass

2.7 USB Test

1. MS-DOS

Item	Description-	Result	Remark
1	Device Manager Check	Pass	
2	External USB Keyboard Test	Pass	
3	External USB Mouse Test	Pass	
4	Hot plugging test	Pass	

2. Windows Vista

Item	Description-	Result	Remark
1	Device Manager Check	Pass	
2	External USB Keyboard Test	Pass	
3	External USB Mouse Test	Pass	
4	Hot plugging test	Pass	

3. Windows Vista 64bit

Item	Description-	Result	Remark
1	Device Manager Check	Pass	
2	External USB Keyboard Test	Pass	
3	External USB Mouse Test	Pass	

4	Hot plugging test	Pass	
---	-------------------	------	--

4. Windows XP Professional SP2

Item	Description-	Result	Remark
1	Device Manager Check	Pass	
2	External USB Keyboard Test	Pass	
3	External USB Mouse Test	Pass	
4	Hot plugging test	Pass	

5. Windows XP Professional x64 Edition Version 2003 SP1

Item	Description	Result	Remark
1	Device Manager Check	Pass	
2	External USB Keyboard Test	Pass	
3	External USB Mouse Test	Pass	
4	Hot plugging test	Pass	

6. Windows 2000 Professional

Item	Description	Result	Remark
1	Device Manager Check	Pass	
2	External USB Keyboard Test	Pass	
3	External USB Mouse Test	Pass	
4	Hot plugging test	Pass	

7. Windows Server 2000

Item	Description	Result	Remark
1	Device Manager Check	Pass	
2	External USB Keyboard Test	Pass	
3	External USB Mouse Test	Pass	

4	Hot plugging test	Pass	
---	-------------------	------	--

8. Windows Server 2003

Item	Description	Result	Remark
1	Device Manager Check	Pass	
2	External USB Keyboard Test	Pass	
3	External USB Mouse Test	Pass	
4	Hot plugging test	Pass	

2.8 Serial Port Test

1. MS-DOS

Item	Description	Result	Remark
1	RS-232 Mouse Test	Pass	
2	RS-232 Modem Test	Pass	
3	B&B Electronics COM Port RS-232 Test (W/Loop-Back)	Pass	
4	PC CHECK COM Port RS-232 Test (W/Loop-Back)	Pass	

2. Windows Vista

Item	Description	Result	Remark
1	Device Manager Check	Pass	
2	RS-232 Mouse Test	Pass	

3	RS-232 Modem Test	Pass	
---	-------------------	------	--

3. Windows Vista 64bit

Item	Description	Result	Remark
1	Device Manager Check	Pass	
2	RS-232 Mouse Test	Pass	
3	RS-232 Modem Test	Pass	

4. Windows XP Professional SP2

Item	Description	Result	Remark
1	Device Manager Check	Pass	
2	RS-232 Mouse Test	Pass	
3	RS-232 Modem Test	Pass	

5. Windows XP Professional x64 Edition Version 2003 SP1

Item	Description	Result	Remark
1	Device Manager Check	Pass	
2	RS-232 Mouse Test	Pass	
3	RS-232 Modem Test	Pass	

6. Windows 2000 Professional

Item	Description	Result	Remark
1	Device Manager Check	Pass	
2	RS-232 Mouse Test	Pass	
3	RS-232 Modem Test	Pass	

7. Windows Server 2000

Item	Description	Result	Remark
1	Device Manager Check	Pass	
2	RS-232 Mouse Test	Pass	
3	RS-232 Modem Test	Pass	

8. Windows Server 2003

Item	Description	Result	Remark
1	Device Manager Check	Pass	
2	RS-232 Mouse Test	Pass	
3	RS-232 Modem Test	Pass	

2.9 Keyboard 、 Mouse Test

1. MS-DOS

Item	Description	Result	Remark
1	Keyboard LED Status Test	Pass	
2	Keyboard Typing Test	Pass	

2. Windows Vista

Item	Description	Result	Remark
1	Device Manager Check	Pass	
2	Keyboard Typing Test	Pass	
3	Mouse Detect Test	Pass	

3. Windows Vista 64bit

Item	Description	Result	Remark
1	Device Manager Check	Pass	
2	Keyboard Typing Test	Pass	
3	Mouse Detect Test	Pass	

4. Windows XP Professional SP2

Item	Description	Result	Remark
1	Device Manager Check	Pass	
2	Keyboard Typing Test	Pass	
3	Mouse Detect Test	Pass	

5. Windows XP Professional x64 Edition Version 2003 SP1

Item	Description	Result	Remark
1	Device Manager Check	Pass	
2	Keyboard Typing Test	Pass	
3	Mouse Detect Test	Pass	

6. Windows 2000 Professional

Item	Description	Result	Remark
1	Device Manager Check	Pass	
2	Keyboard Typing Test	Pass	
3	Mouse Detect Test	Pass	

7. Windows Server 2000

Item	Description	Result	Remark
1	Device Manager Check	Pass	
2	Keyboard Typing Test	Pass	
3	Mouse Detect Test	Pass	

8. Windows Server 2003

Item	Description	Result	Remark
1	Device Manager Check	Pass	
2	Keyboard Typing Test	Pass	
3	Mouse Detect Test	Pass	

9. LINUX SUSE 10.1

Item	Description	Result	Remark
1	Device Manager Check	Pass	
2	Keyboard Typing Test	Pass	
3	Mouse Detect Test	Pass	

10. LINUX Red Hat 9.0

Item	Description	Result	Remark
1	Device Manager Check	Pass	
2	Keyboard Typing Test	Pass	
3	Mouse Detect Test	Pass	

11. LINUX Fedora Core 5

Item	Description	Result	Remark
1	Device Manager Check	Pass	
2	Keyboard Typing Test	Pass	
3	Mouse Detect Test	Pass	

2.10 LAN Test

1. Windows VISTA

Item	Description	Result	Remark
1	Device Manager Check	Pass	
2	Data Transfer Test	Pass	

2. Windows VISTA 64bit

Item	Description	Result	Remark
1	Device Manager Check	Pass	
2	Data Transfer Test	Pass	

3. Windows XP Professional SP2

Item	Description	Result	Remark
1	Device Manager Check	Pass	
2	Data Transfer Test	Pass	

4. Windows XP Professional x64 Edition Version 2003 SP1

Item	Description	Result	Remark
1	Device Manager Check	Pass	
2	Data Transfer Test	Pass	

5. Windows 2000 Professional

Item	Description	Result	Remark
1	Device Manager Check	Pass	
2	Data Transfer Test	Pass	

6. Windows Server 2000

Item	Description	Result	Remark
1	Device Manager Check	Pass	
2	Data Transfer Test	Pass	

7. Windows Server 2003

Item	Description	Result	Remark
1	Device Manager Check	Pass	
2	Data Transfer Test	Pass	

8. LINUX SUSE 10.1

Item	Description	Result	Remark
1	Device Manager Check	Pass	
2	Data Transfer Test	Pass	

9. LINUX Red Hat 9.0

Item	Description	Result	Remark
1	Device Manager Check	Pass	
2	Data Transfer Test	Pass	

10. LINUX Fedora Core 5

Item	Description	Result	Remark
1	Device Manager Check	Pass	
2	Data Transfer Test	Pass	

2.11 Power Supply Test

1. MS-DOS 6.22

Item	Description	Verification	
		Result	Remark
1	ATX Power On/Off	Pass	Seventeam ST-300WAP (300W)
2	ATX Power On/Off	Pass	Aopen FSP300-60ATN (300W)
3	ATX Power On/Off	Pass	JAGIER P4/ATX-350A (350W)
4	ATX Power On/Off	Pass	CWT CWT-300ATX12 (PFC) (300W)

2. Windows Vista

Item	Description	Verification	
		Result	Remark
1	ATX Power On/Off	Pass	Seventeam ST-300WAP (300W)
2	ATX Power On/Off	Pass	Aopen FSP300-60ATN (300W)
3	ATX Power On/Off	Pass	JAGIER P4/ATX-350A (350W)
4	ATX Power On/Off	Pass	CWT CWT-300ATX12 (PFC) (300W)

3. Windows Vista 64bit

Item	Description	Verification	
		Result	Remark
1	ATX Power On/Off	Pass	Seventeam ST-300WAP (300W)
2	ATX Power On/Off	Pass	Aopen FSP300-60ATN (300W)
3	ATX Power On/Off	Pass	JAGIER P4/ATX-350A (350W)
4	ATX Power On/Off	Pass	CWT CWT-300ATX12 (PFC) (300W)

4. Windows XP Professional SP2

Item	Description	Verification	
		Result	Remark

1	ATX Power On/Off	Pass	Seventeam ST-300WAP (300W)
2	ATX Power On/Off	Pass	Aopen FSP300-60ATN (300W)
3	ATX Power On/Off	Pass	JAGIER P4/ATX-350A (350W)
4	ATX Power On/Off	Pass	CWT CWT-300ATX12 (PFC) (300W)

5. Windows XP Professional x64 Edition Version 2003 SP1

Item	Description	Verification	
		Result	Remark
1	ATX Power On/Off	Pass	Seventeam ST-300WAP (300W)
2	ATX Power On/Off	Pass	Aopen FSP300-60ATN (300W)
3	ATX Power On/Off	Pass	JAGIER P4/ATX-350A (350W)
4	ATX Power On/Off	Pass	CWT CWT-300ATX12 (PFC) (300W)

6. Windows 2000 Professional

Item	Description	Verification	
		Result	Remark
1	ATX Power On/Off	Pass	Seventeam ST-300WAP (300W)
2	ATX Power On/Off	Pass	Aopen FSP300-60ATN (300W)
3	ATX Power On/Off	Pass	JAGIER P4/ATX-350A (350W)
4	ATX Power On/Off	Pass	CWT CWT-300ATX12 (PFC) (300W)

7. Windows Server 2000

Item	Description	Verification	
		Result	Remark
1	ATX Power On/Off	Pass	Seventeam ST-300WAP (300W)
2	ATX Power On/Off	Pass	Aopen FSP300-60ATN (300W)
3	ATX Power On/Off	Pass	JAGIER P4/ATX-350A (350W)

4	ATX Power On/Off	Pass	CWT CWT-300ATX12 (PFC) (300W)
---	------------------	------	----------------------------------

8. Windows Server 2003

Item	Description	Verification	
		Result	Remark
1	ATX Power On/Off	Pass	Seventeam ST-300WAP (300W)
2	ATX Power On/Off	Pass	Aopen FSP300-60ATN (300W)
3	ATX Power On/Off	Pass	JAGIER P4/ATX-350A (350W)
4	ATX Power On/Off	Pass	CWT CWT-300ATX12 (PFC) (300W)

9. LINUX SUSE 10.1

Item	Description	Verification	
		Result	Remark
1	ATX Power On/Off	Pass	Seventeam ST-300WAP (300W)
2	ATX Power On/Off	Pass	Aopen FSP300-60ATN (300W)
3	ATX Power On/Off	Pass	JAGIER P4/ATX-350A (350W)
4	ATX Power On/Off	Pass	CWT CWT-300ATX12 (PFC) (300W)

10. LINUX Red Hat 9.0

Item	Description	Verification	
		Result	Remark
1	ATX Power On/Off	Pass	Seventeam ST-300WAP (300W)
2	ATX Power On/Off	Pass	Aopen FSP300-60ATN (300W)
3	ATX Power On/Off	Pass	JAGIER P4/ATX-350A (350W)
4	ATX Power On/Off	Pass	CWT CWT-300ATX12 (PFC) (300W)

11. LINUX Fedora Core 5

Item	Description	Verification	
		Result	Remark
1	ATX Power On/Off	Pass	Seventeam ST-300WAP (300W)
2	ATX Power On/Off	Pass	Aopen FSP300-60ATN (300W)
3	ATX Power On/Off	Pass	JAGIER P4/ATX-350A (350W)
4	ATX Power On/Off	Pass	CWT CWT-300ATX12 (PFC) (300W)

2.12 Floppy Drive Test

Model: SAMSUNG SFD321S

1. MS-DOS 6.22

Item	Description	Result	Remark
1	Floppy Drive Detect	Pass	
2	Boot from Floppy	Pass	
3	Floppy Data Transfer	Pass	

2. Windows Vista

Item	Description	Result	Remark
1	Floppy Drive Detect	Pass	
2	Floppy Data Transfer	Pass	

3. Windows Vista 64bit

Item	Description	Result	Remark
1	Floppy Drive Detect	Pass	
2	Floppy Data Transfer	Pass	

4. Windows XP Professional SP2

Item	Description	Result	Remark
1	Floppy Drive Detect	Pass	
2	Floppy Data Transfer	Pass	

5. Windows XP Professional x64 Edition Version 2003 SP1

Item	Description	Result	Remark
1	Floppy Drive Detect	Pass	
2	Floppy Data Transfer	Pass	

6. Windows 2000 Professional

Item	Description	Result	Remark
1	Floppy Drive Detect	Pass	
2	Floppy Data Transfer	Pass	

7. Windows Server 2000

Item	Description	Result	Remark
1	Floppy Drive Detect	Pass	
2	Floppy Data Transfer	Pass	

8. Windows Server 2003

Item	Description	Result	Remark
1	Floppy Drive Detect	Pass	
2	Floppy Data Transfer	Pass	

9. LINUX SUSE 10.1

Item	Description	Result	Remark
1	Floppy Drive Detect	Pass	
2	Floppy Data Transfer	Pass	

10. LINUX Red Hat 9.0

Item	Description	Result	Remark
1	Floppy Drive Detect	Pass	
2	Floppy Data Transfer	Pass	

11. LINUX Fedora Core 5

Item	Description	Result	Remark
1	Floppy Drive Detect	Pass	
2	Floppy Data Transfer	Pass	

2.13 Boot Up Test

Item	Description	Result	Remark
1	Soft boot from HDD	Pass	
2	Soft boot from CD-ROM	Pass	
3	Soft boot from Floppy	Pass	
4	Soft boot from CF	Pass	
5	Reboot test with Win VISTA	Pass	
6	Reboot test with Win VISTA 64bit	Pass	
7	Reboot test with Win XP	Pass	
8	Reboot test with Win XP 64bit	Pass	
9	Reboot test with Win 2000	Pass	
10	Reboot test with Win Server 2000	Pass	
11	Reboot test with Win Server 2003	Pass	
12	Reboot test with Linux "Red Hat 9.0"	Pass	
13	Reboot test with Linux "Suse 10.1"	Pass	
14	Reboot test with Linux "Fedora Core5"	Pass	
15	Reboot test with Linux "Fedora Core6"	Pass	

2.14 Os Install

Item	Description	Result	Remark
1	Windows XP Professional SP1	Pass	
2	Windows XP Professional SP2	Pass	
3	Windows VISTA	Pass	
4	Windows VISTA 64bit	Pass	
5	Windows 2000 Professional SP4	Pass	
6	Windows Serve 2000	Pass	
7	Windows Server 2003	Pass	
8	Linux "Red Hat 9.0"	Pass	
9	Linux "Suse 10.1"	Pass	
10	Linux "Fedora Core 4"	Pass	
11	Linux "Fedora Core 5"	Pass	
12	Linux "Fedora Core 6"	Pass	

2.15 Print Port Test

1. Windows Vista

Item	Description	Result	Remark
1	ECP/EPP PRINT TEST	Pass	

2. Windows Vista 64bit

Item	Description	Result	Remark
1	ECP/EPP PRINT TEST	Pass	

3. Window XP Professional SP2

Item	Description	Result	Remark
1	ECP/EPP PRINT TEST	Pass	

4. Windows XP Professional x64 Edition Version 2003 SP1

Item	Description	Result	Remark
1	ECP/EPP PRINT TEST	Pass	

5. Window 2000 Professional

Item	Description	Result	Remark
1	ECP/EPP PRINT TEST	Pass	

6. Windows Server 2000

Item	Description	Result	Remark
1	ECP/EPP PRINT TEST	Pass	

7. Windows Server 2003

Item	Description	Result	Remark
1	ECP/EPP PRINT TEST	Pass	

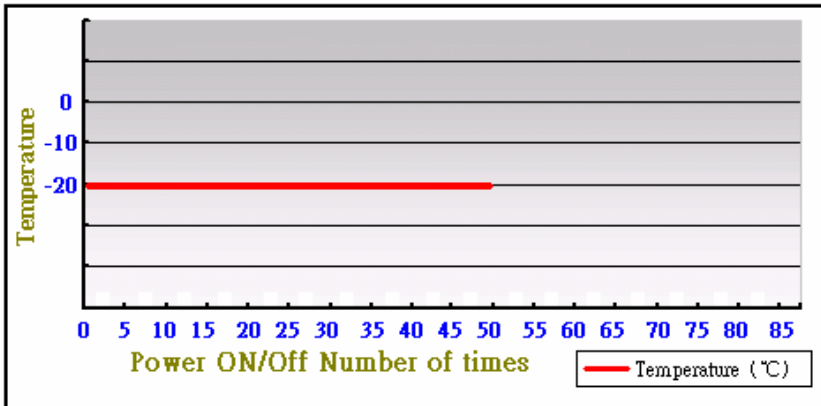
3. Environmental Test

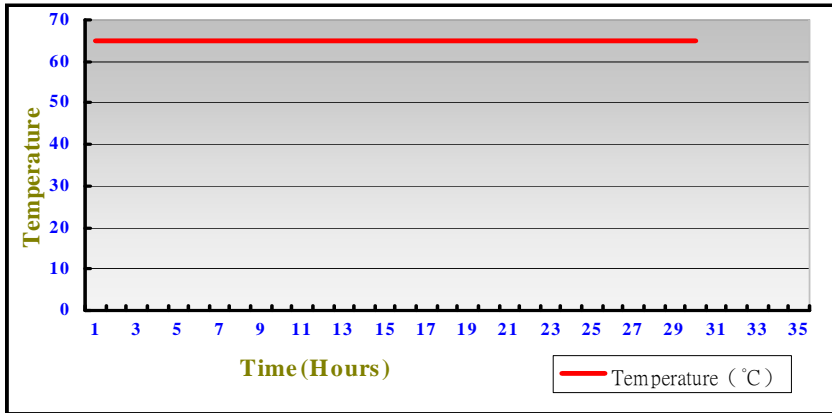
3.1 Temperature Test

Hardware Device list:

System Board	FS-97C
CPU	Intel Mobile Core Duo T2400 32K / 2MB / 1.83GB
Memory	A-DATA M2OSS2G3H3110A1B0Z DDRII533 5121MGB
HDD	Western Digital WD2500KS-00MJB0 250GB (SATA)
Operating OS	Windows XP Professional SP2
Test Equipment	Thermotron SM-8S Temperature Test Chamber
Test Program	3DMark 2003
Backplane	CBP-14P4 Rev.A0

Test Result:





Boot Up Test:

Temperature	Result	Remark
-20°C	Pass	Power On/Off Number of times
70°C	Pass	Times

4. Reliability Test

4.1 Power Consumption Test

1. Test Environment:

Motherboard	FS-97C
CPU	Yonah Celeron M 420 L1=32KB L2=1MB 1.6 GHz
Memory	ADATA DDRII 667MHZ 1GB (M20AD5G3I4176I1C52)
Power Supply	Aopen FSP300-60ATN
HDD	Western Digital WD250JB-00REA0 WD2500JB
Backplane	CBP-14P4 Rev.A0

Voltage	Current (A)	Power (W)	Remark
-12V	N/A	N/A	Boot Up
12V	1.09	13.08	Boot Up
-5V	N/A	N/A	Boot Up
5V	3.28	16.4	Boot Up
3.3V	N/A	N/A	Boot Up
5Vsb	N/A	N/A	Boot Up

2. Test Environment:

Motherboard	FS-97C
CPU	Core Duo processor T2050 /2M / 1.6 GHz
Memory	A-DATA M2OEL2G3H3110A1B0Z (E5108AB-5C-E)
Power Supply	JAGIER P4/ATX-350A (350W)
Backplane	CBP-14P4 Rev.A0

Voltage	Current (A)	Power (W)	Remark
-12V	N/A	N/A	Boot Up
12V	1.29	15.48	Boot Up
-5V	N/A	N/A	Boot Up
5V	2.94	14.7	Boot Up
3.3V	N/A	N/A	Boot Up
5Vsb	N/A	N/A	Boot Up

3. Test Environment:

Motherboard	FS-97C
CPU	Yonah Celeron M 420 L1=32KB L2=1MB 1.6 GHz
Memory	ADATA DDRII 667MHZ 1GB (M20AD5G3I4176I1C52)
Power Supply	Aopen FSP300-60ATN
HDD	Western Digital WD250JB-00REA0 WD2500JB
CD-ROM	LEMEL LCD-5200S
Operating System	Window XP Professional SP2
Test Program	3Dmark 2003
Backplane	CBP-14P4 Rev.A0

Voltage	Current (A)	Power (W)	Remark
-12V	N/A	N/A	
12V	1.4	16.8	
-5V	N/A	N/A	
5V	3.95	19.75	
3.3V	N/A	N/A	
5Vsb	N/A	N/A	

4. Test Environment:

Motherboard	FS-97C
CPU	Core Duo processor T2050 /2M / 1.6 GHz
Memory	A-DATA M2OEL2G3H3110A1B0Z (E5108AB-5C-E)
HDD	Western Digital WD250KS-00MJB0 (250GBytes) (SATA)
CDROM	LITEON SOSC-2485KX USB 2.0 CD-R/ RW /DVD-ROM Combo
Operating System	Window XP Professional SP2
Test Program	3Dmark 2003
Backplane	CBP-14P4 Rev.A0

Voltage	Current (A)	Power (W)	Remark
-12V	N/A	N/A	
12V	2.31	27.72	
-5V	N/A	N/A	
5V	4.08	20.4	
3.3V	N/A	N/A	
5Vsb	N/A	N/A	

4.2 Thermal measurements at various points on the board

1.Test Environment:

Motherboard	FS-97C
CPU	Yonah Celeron M 420 L1=32KB L2=1MB 1.6 GHz
Memory	ADATA DDRII 667MHZ 1GB (M20AD5G3I4176I1C52)
Power Supply	Aopen FSP300-60ATN
HDD	Western Digital WD250JB-00REA0 WD2500JB
CD-ROM	LEMEL LCD-5200S
Operating System	Window XP Professional SP2
Backplane	CBP-14P4 Rev.A0

Test Result:

CPU	37°C
945GM (Northbridge)	46.8°C
ICH7-M (Southbridge)	40.1°C
U10	36.6°C
U11	48.1°C
U17	38.6C

5. Performance Test

5.1 Win Bench 99 Version 1.1

Test Environment

Motherboard FS-97C

Intel Mobile Core Duo T2400 32K / 2MB / 1.83GB

A-DATA M2OSS2G3H3110A1B0Z DDRII533 5121MGB

Western Digital WD2500KS-00MJB0 250GB (SATA)

Seasonic SS-380HB Active PFC F3 (380Watts)

Windows Professional XP SP2

Item	WEIGHTED SUITE	Result	Remark
1	CPUmark99	Pass	220
2	Direct Draw Tests	Pass	
3	FPU Win Mark	Pass	11900
4	Business Disk WinMark 99	Pass	12000 ^{2,3} Thousand Bytes/Sec
5	Business Graphics WinMark 99	Pass	361
6	High-End Graphicys WinMark 99	Pass	1060
7	High-End Disk WinMark 99	Pass	49500 ^{2,3} Thousand Bytes/Sec

5.2 Win Stone 99 Version 1.1

Test Environment

Intel Mobile Core Duo T2400 32K / 2MB / 1.83GB
A-DATA M2OSS2G3H3110A1B0Z DDRII533 5121MGB
Western Digital WD2500KS-00MJB0 250GB (SATA)
Seasonic SS-380HB Active PFC F3 (380Watts)

Windows Professional XP SP2

Item	WEIGHTED SUITE	Result	Remark
1	Business Win stone 99 Win stone 99 Scores	Non-Support	

5.3 Business WinStone

Windows XP Professional SP2

WEIGHTED SUITE	Test Environment	Result	Remark
Business Win stone 2001 Version 1.0.1	Intel Mobile Core Duo T2400 32K / 2MB / 1.83GB	Pass	88.5
	A-DATA M2OSS2G3H3110A1B0Z DDRII533 5121MGB		86.1
	Western Digital WD2500KS-00MJB0 250GB (SATA)		88.5
	Seasonic SS-380HB Active PFC F3 (380Watts)		86.7
			84.5
Business Win stone2002 Version 1.0.1	Intel Mobile Core Duo T2400 32K / 2MB / 1.83GB	Pass	27.1
	A-DATA M2OSS2G3H3110A1B0Z DDRII533 5121MGB		22
	Western Digital WD2500KS-00MJB0 250GB (SATA)		22.6
	Seasonic SS-380HB Active PFC F3 (380Watts)		26.1
			16.9
Business Win stone2004 Version 1.0	Intel Mobile Core Duo T2400 32K / 2MB / 1.83GB	Pass	10.5
	A-DATA M2OSS2G3H3110A1B0Z DDRII533 5121MGB		10.8
	Western Digital WD2500KS-00MJB0 250GB (SATA)		11
	Seasonic SS-380HB Active PFC F3		10.3
			10.1

	(380Watts)		
--	------------	--	--

5.4 Content Creation WinStone Windows XP Professional SP2

WEIGHTED SUITE	Test Environment	Result	Remark
Content Creation Winstone 2000 Version 1.2	Intel Mobile Core Duo T2400 32K / 2MB / 1.83GB	Pass	108.5
	A-DATA M2OSS2G3H3110A1B0Z DDRII533 5121MGB		105.6
	Western Digital WD2500KS-00MJB0 250GB (SATA)		107.1
	Seasonic SS-380HB Active PFC F3 (380Watts)		109.3
			102.3
Content Creation Winstone 2001 Version 1.0.1	Intel Mobile Core Duo T2400 32K / 2MB / 1.83GB	Pass	126.1
	A-DATA M2OSS2G3H3110A1B0Z DDRII533 5121MGB		125.7
	Western Digital WD2500KS-00MJB0 250GB (SATA)		126.5
	Seasonic SS-380HB Active PFC F3 (380Watts)		126.5
			126.8
Multimedia Content Creation Winstone 2004 Version 1.0	Intel Mobile Core Duo T2400 32K / 2MB / 1.83GB	Pass	33
	A-DATA M2OSS2G3H3110A1B0Z DDRII533 5121MGB		32.4
	Western Digital WD2500KS-00MJB0 250GB		33
			32.8
			32.7

	(SATA) Seasonic SS-380HB Active PFC F3 (380Watts)		
--	---	--	--

5.5 3D MARK

Window XP Professional SP2

WEIGHTED SUITE	Test Environment	Result	Remark
3DMARK2000 Scores	Core Duo processor T2050 /32K /2M / 1.6 GHz	Pass	6600
3DMARK2001 SE Pro-Build 330	A-DATA M2OEL2G3H3110A1B0Z	Pass	4487
3DMARK2003 Scores	(E5108AB-5C-E)	Pass	1001
3DMARK2005 Scores	Western Digital WD250KS-00MJB0 (250GBytes) (SATA)	Pass	379

5.6 3D MARK2006 Professional Edition 1.1.0

Windows XP Professional SP2

Item	WEIGHTED SUITE	Test Environment	Result	Remark
------	----------------	------------------	--------	--------

1	3DMARK Source	Core Duo processor T2050	Pass	142
2	SM2.0 Source	/32K /2M / 1.6 GHz	Pass	65
3	HDR/SM3.0 Source	A-DATA M2OEL2G3H3110A1B0Z	Non-Pass	N/A
4	CPU Source	(E5108AB-5C-E) Western Digital WD250KS-00MJB0 (250GBytes) (SATA)	Pass	1292

5.7 PC Mark2002 Pro-Build 100

Test Environment
Core Duo processor T2050 /32K /2M / 1.6 GHz A-DATA M2OEL2G3H3110A1B0Z (E5108AB-5C-E) Western Digital WD250KS-00MJB0 (250GBytes) (SATA)

Windows XP Professional SP2

Item	WEIGHTED SUITE	Result	Remark
1	CPU test Source	Pass	7186
2	Memory test Source	Pass	14394
3	HDD test Source	Pass	1563

5.8 PC MARK2004 Version 1.3.0

Test Environment
Core Duo processor T2050 /32K /2M / 1.6 GHz A-DATA M2OEL2G3H3110A1B0Z (E5108AB-5C-E) Western Digital WD250KS-00MJB0 (250GBytes) (SATA)

Windows XP Professional SP2

Item	WEIGHTED SUITE	Result	Remark
1	System test Source	Pass	5058
2	CPU test Source	Pass	5768

3	Memory test Source	Pass	4166
4	Graphic test Source	Pass	710
5	HDD test Source	Pass	5386

5.9 PC MARK2005 Version 1.2.0

Test Environment
Core Duo processor T2050 /32K /2M / 1.6 GHz A-DATA M2OEL2G3H3110A1B0Z (E5108AB-5C-E) Western Digital WD250KS-00MJB0 (250GBytes) (SATA)

Windows XP Professional SP2

Item	WEIGHTED SUITE	Result	Remark
1	System test Source	Pass	3082
2	CPU test Source	Pass	4261
3	Memory test Source	Pass	3537
4	Graphic test Source	Pass	784
5	HDD test Source	Pass	5446