

HS-770

Test Report

Edition 1.0

2006/07/26



Test Engineer :Alen

Identify:

Index

Index	2
1. Function test	4
1.1 Hardware function	4
1.2 BIOS function	6
1.3 Driver	8
2. Compatibility test.....	9
2.1 CPU Test	9
2.2 Memory Test.....	11
2.3 VGA Graphic Test.....	13
2.4 Audio Test.....	14
2.5 HDD Test	16
2.6 USB Test	24
2.7 Serial Port Test	26
2.8 IrDA Test.....	27
2.9 Keyboard Test	28
2.10 Mouse Test.....	30
2.11 LAN Module Test	31
2.12 Power Supply Test.....	32
2.13 CD-ROM Test	34
2.14 Floppy Drive Test.....	39
2.15 Printer Port Test.....	41
2.16 Boot Up Test.....	42
2.17 Os Install	42
3. Environmental test.....	43
3.1 Temperature Test.....	43
4. Reliability Test.....	44
4.1 Power Consumption Test	44
4.2 Thermal measurements at various points on the board.....	48

5. Performance Test.....	50
5.1 Business Win Stone 2001	50
5.2 Business Win Stone 2002	51
5.3 Multimedia Content Creation Winstone 2003	52
5.4 Multimedia Content Creation Winstone 2004	53
5.5 3D MARK	54
5.6 PCMARK 2002.....	55
5.7 PCMARK 2004.....	56
5.8 PCMARK 2005.....	57

1. Function test

1.1 Hardware function

Base Function Test

1	Power Button	Pass
2	Reset	Pass
3	Power LED	Pass
4	HDD LED	Pass
5	IDE Primary Master	Pass
6	IDE Primary Slave	Pass
7	IDE Secondary Master	Pass
8	IDE Secondary Slave	Pass
9	Floppy	Pass
10	Compact Flash	Pass
11	DIMM	Pass
12	VGA Port	Pass
13	Keyboard	Pass
14	Mouse	Pass
15	AUDIO Port	Pass
16	COM 1	Pass
17	COM 2	Pass
18	COM 3	Pass
19	COM 4	Pass
20	COM Port 422&485	Pass
21	Printer Port	Pass
22	IRDA	Pass
23	SYSFAN	Pass
24	CPUFAN	Pass
25	MINI PCI	Pass

2.0 PITCH (DIP)

1	JRTC	Pass
2	JCFSEL	Pass
3	JVLCD2	Pass

1.2 BIOS function

Item	Description	Result	Remark
1	Press 'Del' to run Setup Utility	Pass	
2	Ctrl-Alt-Del – Soft-Reboot	Pass	
3	Save & Exit Setup	Pass	
4	Date & Time Setting	Pass	
5	Drive A	Pass	
6	Quick Power On Self Test	Pass	
7	Boot Device Setting	Pass	
8	Boot Up Floppy Seek	Pass	
9	Boot Up Num Lock Status	Pass	
10	Boot Display	Pass	
11	LCD Type	Pass	
12	On Chip Primary PCI IDE	Pass	
13	On Chip Secondary PCI IDE	Pass	
14	ACPI Suspend Type	Pass	
15	Onboard LAN 1 Controller	Pass	
16	Onboard LAN 2 Controller	Pass	
17	USB 2.0 Controller	Pass	
18	On Chip Serial ATA	Pass	
19	USB Keyboard Support	Pass	
20	USB Mouse Support	Pass	
21	Onboard FDC Controller	Pass	
22	Soft-Off by PWRBTN	Pass	
23	Power On Function	Pass	
24	PS2MS Wakeup from S3 /S4 /S5	Pass	
25	PS2KB Wakeup from S3 /S4 /S5	Pass	
26	Wake-Up On PCI Card	Pass	

27	Wake-Up On LAN	Pass	
28	Resume by Alarm	Pass	
29	Watching Dog Timer Select	Pass	

1.3 Driver

1. Windows 2000 SP4 Driver Test

Item	Description	Result	Remark
1	Chip set Driver	Pass	
2	VGA Driver	Pass	
3	Audio Driver	Pass	
4	LAN Driver	Pass	

2. Windows XP SP2 Driver Test

	Description	Result	Remark
1	Chip set Driver	Pass	
2	VGA Driver	Pass	
3	Audio Driver	Pass	
4	LAN Driver	Pass	

3.SUSE-LINUX 10 Driver Test

	Description	Result	Remark
1	Chip set Driver	Pass	
2	VGA Driver	Pass	
3	Audio Driver	Pass	
4	LAN Driver	Pass	

2. Compatibility test

2.1 CPU Test

Processor: Intel Pentium M 2.26GHZ

O.S: MS-DOS 6.22

Item	Description	Result	Remark
1	CPU Type Detect	Pass	
2	CPU Speed Detect	Pass	
3	OS Running Stability	Pass	

Windows 2000

Item	Description	Result	Remark
1	CPU Type Detect	Pass	
2	CPU Speed Detect	Pass	
3	OS Running Stability	Pass	
4	Business WinStone2001 Test	Pass	
5	Business WinStone2002 Test	Pass	

Windows 2003 Server Enterprise Edition

Item	Description	Result	Remark
1	CPU Type Detect	Pass	
2	CPU Speed Detect	Pass	
3	OS Running Stability	Pass	

Windows XP

Item	Description	Result	Remark
1	CPU Type Detect	Pass	
2	CPU Speed Detect	Pass	
3	OS Running Stability	Pass	
4	Business WinStone2002 Test	Pass	

SUSE-Linux 10

Item	Description	Result	Remark
1	CPU Type Detect	Pass	
2	CPU Speed Detect	Pass	
3	OS Running Stability	Pass	

2.2 Memory Test

1. SAMSUNG DDR2 533 1GB (K4T51083QB-ZKD5)

Item	Description	Result	Remark
1	Boot	Pass	
2	MS-DOS 6.22	Pass	
3	Windows 98	Pass	
4	Windows 2000	Pass	
5	Windows 2003 Server	Pass	
6	Windows XP	Pass	
7	SUSE-LINUX 10	Pass	

2. Hynix DDR2 533 1GB (HY5PS12821)

Item	Description	Result	Remark
1	Boot	Pass	
2	MS-DOS 6.22	Pass	
3	Windows 98	Pass	
4	Windows 2000	Pass	
5	Windows 2003 Server	Pass	
6	Windows XP	Pass	
7	SUSE-LINUX 10	Pass	

3. ELPIDA DDR2 533 1GB(E5108AE-6E-E)

Item	Description	Result	Remark
1	Boot	Pass	
2	MS-DOS 6.22	Pass	
3	Windows 98	Pass	
4	Windows 2000	Pass	
5	Windows 2003 Server	Pass	
6	Windows XP	Pass	
7	SUSE-LINUX 10	Pass	

4. 宇瞻 DDR2 533 1GB (HYB18T512)

Item	Description	Result	Remark
1	Boot	Pass	
2	MS-DOS 6.22	Pass	
3	Windows 98	Pass	
4	Windows 2000	Pass	
5	Windows 2003 Server	Pass	
6	Windows XP	Pass	
7	SUSE-LINUX 10	Pass	

5. SAMSUNG DDR2 512MB (K4T51083QB-GCD5)

Item	Description	Result	Remark
1	Boot	Pass	
2	MS-DOS 6.22	Pass	
3	Windows 98	Pass	
4	Windows 2000	Pass	
5	Windows 2003 Server	Pass	
6	Windows XP	Pass	
7	SUSE-LINUX 10	Pass	

2.3 VGA Graphic Test

1. Windows 2000

Item	Description	Result	Remark
1	Driver Install	Pass	
2	Resolution/Color Change	Pass	
3	Dual View Test	Pass	With LVDS LCD PANEL
4	CRT Display Test	Pass	
5	CRT Display Quality Test	Pass	

2. Windows XP

Item	Description	Result	Remark
1	Driver Install	Pass	
2	Resolution/Color Change	Pass	
3	Dual View Test	Pass	With LVDS LCD PANEL
4	CRT Display Test	Pass	
5	CRT Display Quality Test	Pass	

3. SUSE-LINUX 10

Item	Description	Result	Remark
1	Driver Install	Pass	
2	Resolution/Color Change	Pass	
3	CRT Display Test	Pass	
4	CRT Display Quality Test	Pass	

2.4 Audio Test

2. Windows 2000

Item	Description	Result	Remark
1	Driver Install	Pass	
2	Speaker Left	Pass	
3	Speaker Right	Pass	
4	Sound Effect	Pass	
5	Equalizer	Pass	
6	Micophone	Pass	

3. Windows 2003 Server

Item	Description	Result	Remark
1	Driver Install	Pass	
2	Speaker Left	Pass	
3	Speaker Right	Pass	
4	Sound Effect	Pass	
5	Equalizer	Pass	
6	Micophone	Pass	

4. Windows XP

Item	Description	Result	Remark
1	Driver Install	Pass	
2	Speaker Left	Pass	
3	Speaker Right	Pass	
4	Sound Effect	Pass	
5	Equalizer	Pass	
6	Micophone	Pass	

5. SUSE-LINUX 10

Item	Description	Result	Remark
1	Driver Install	Pass	
2	Speaker Left	Pass	
3	Speaker Right	Pass	
4	Microphone	Pass	

2.5 HDD Test

Model: Western Digital WD400EB-00CPF0 40GB

1. MS-DOS 6.22

Item	Description	Result	Remark
1	HDD Size Detect	Pass	
2	HDD Read/Write	Pass	
3	HDD Partition/Format	Pass	
4	HDD LED Check	Pass	

2. Windows 98

Item	Description	Result	Remark
1	HDD Detect	Pass	
2	HDD Read/Write	Pass	
3	HDD Data Transfer	Pass	
4	HDD Format	Pass	
5	HDD LED Check	Pass	

3. Windows 2000

Item	Description	Result	Remark
1	HDD Detect	Pass	
2	HDD Read/Write	Pass	
3	HDD Data Transfer	Pass	
4	HDD Format	Pass	
5	HDD LED Check	Pass	

4. Windows 2003 Server

Item	Description	Result	Remark
1	HDD Detect	Pass	
2	HDD Read/Write	Pass	
3	HDD Data Transfer	Pass	
4	HDD Format	Pass	
5	HDD LED Check	Pass	

5. Windows XP

Item	Description	Result	Remark
1	HDD Detect	Pass	
2	HDD Read/Write	Pass	
3	HDD Data Transfer	Pass	
4	HDD Format	Pass	
5	HDD LED Check	Pass	

6. Suse-Linux 10

Item	Description	Result	Remark
1	HDD Detect	Pass	
2	HDD Read/Write	Pass	
3	HDD Data Transfer	Pass	
4	HDD Format	Pass	
5	HDD LED Check	Pass	

Model: Western Digital WD1600JS-00MHB0 (SATA) 160GB

1. MS-DOS 6.22

Item	Description	Result	Remark
1	HDD Size Detect	Pass	
2	HDD Read/Write	Pass	
3	HDD Partition/Format	Pass	
4	HDD LED Check	Pass	

2. Windows 98

Item	Description	Result	Remark
1	HDD Detect	Pass	
2	HDD Read/Write	Pass	
3	HDD Data Transfer	Pass	
4	HDD Format	Pass	
5	HDD LED Check	Pass	

3. Windows 2000

Item	Description	Result	Remark
1	HDD Detect	Pass	
2	HDD Read/Write	Pass	
3	HDD Data Transfer	Pass	
4	HDD Format	Pass	
5	HDD LED Check	Pass	

4. Windows 2003 Server

Item	Description	Result	Remark
1	HDD Detect	Pass	
2	HDD Read/Write	Pass	
3	HDD Data Transfer	Pass	
4	HDD Format	Pass	
5	HDD LED Check	Pass	

5. Windows XP

Item	Description	Result	Remark
1	HDD Detect	Pass	
2	HDD Read/Write	Pass	
3	HDD Data Transfer	Pass	
4	HDD Format	Pass	
5	HDD LED Check	Pass	

6. Suse-Linux 10

Item	Description	Result	Remark
1	HDD Detect	Pass	
2	HDD Read/Write	Pass	
3	HDD Data Transfer	Pass	
4	HDD Format	Pass	
5	HDD LED Check	Pass	

Model: HITACHI IC25N020ATMR04-0 20GB

1. MS-DOS 6.22

Item	Description	Result	Remark
1	HDD Size Detect	Pass	
2	HDD Read/Write	Pass	
3	HDD Partition/Format	Pass	
4	HDD LED Check	Pass	

2. Windows 98

Item	Description	Result	Remark
1	HDD Detect	Pass	
2	HDD Read/Write	Pass	
3	HDD Data Transfer	Pass	
4	HDD Format	Pass	
5	HDD LED Check	Pass	

3. Windows 2000

Item	Description	Result	Remark
1	HDD Detect	Pass	
2	HDD Read/Write	Pass	
3	HDD Data Transfer	Pass	
4	HDD Format	Pass	
5	HDD LED Check	Pass	

4. Windows 2003 Server

Item	Description	Result	Remark
1	HDD Detect	Pass	
2	HDD Read/Write	Pass	
3	HDD Data Transfer	Pass	
4	HDD Format	Pass	
5	HDD LED Check	Pass	

5. Windows XP

Item	Description	Result	Remark
1	HDD Detect	Pass	
2	HDD Read/Write	Pass	
3	HDD Data Transfer	Pass	
4	HDD Format	Pass	
5	HDD LED Check	Pass	

6. Suse-Linux 10

Item	Description	Result	Remark
1	HDD Detect	Pass	
2	HDD Read/Write	Pass	
3	HDD Data Transfer	Pass	
4	HDD Format	Pass	
5	HDD LED Check	Pass	

Model:Seagate ST320414A 20GB

1. MS-DOS 6.22

Item	Description	Result	Remark
1	HDD Size Detect	Pass	
2	HDD Read/Write	Pass	
3	HDD Partition/Format	Pass	
4	HDD LED Check	Pass	

2. Windows 98

Item	Description	Result	Remark
1	HDD Detect	Pass	
2	HDD Read/Write	Pass	
3	HDD Data Transfer	Pass	
4	HDD Format	Pass	
5	HDD LED Check	Pass	

3. Windows 2000

Item	Description	Result	Remark
1	HDD Detect	Pass	
2	HDD Read/Write	Pass	
3	HDD Data Transfer	Pass	
4	HDD Format	Pass	
5	HDD LED Check	Pass	

4. Windows XP

Item	Description	Result	Remark
1	HDD Detect	Pass	
2	HDD Read/Write	Pass	
3	HDD Data Transfer	Pass	
4	HDD Format	Pass	
5	HDD LED Check	Pass	

5. Suse-Linux 10

Item	Description	Result	Remark
1	HDD Detect	Pass	
2	HDD Read/Write	Pass	
3	HDD Data Transfer	Pass	
4	HDD Format	Pass	
5	HDD LED Check	Pass	

2.6 USB Test

1. Windows 2000

Item	Description	Result	Remark
1	Device Manager Check	Pass	
2	External USB Keyboard Test	Pass	
3	External USB Mouse Test	Pass	
5	Direct Connect by USB Test	Pass	
6	Hot plugging test	Pass	

2. Windows 2003 Server

Item	Description	Result	Remark
1	Device Manager Check	Pass	
2	External USB Keyboard Test	Pass	
3	External USB Mouse Test	Pass	
5	Direct Connect by USB Test	Pass	
6	Hot plugging test	Pass	

4. Windows XP

Item	Description	Result	Remark
1	Device Manager Check	Pass	
2	External USB Keyboard Test	Pass	
3	External USB Mouse Test	Pass	
5	Direct Connect by USB Test	Pass	
6	Hot plugging test	Pass	

2.7 Serial Port Test

1. Windows 2000

Item	Description	Result	Remark
1	Device Manager Check	Pass	
2	Driver Install	Pass	
3	RS-232 Mouse Test (PNP)	Pass	
4	RS-232 Modem Test (PNP)	Pass	
5	B&B Electronics COM Port RS-232 Test (W/Loop-Back)	Pass	

2. Windows 2003 Server

Item	Description	Result	Remark
1	Device Manager Check	Pass	
2	Driver Install	Pass	
3	RS-232 Mouse Test (PNP)	Pass	
4	RS-232 Modem Test (PNP)	Pass	
5	B&B Electronics COM Port RS-232 Test (W/Loop-Back)	Pass	

3. Windows XP

Item	Description	Result	Remark
1	Device Manager Check	Pass	
2	Driver Install	Pass	
3	RS-232 Mouse Test (PNP)	Pass	
4	RS-232 Modem Test (PNP)	Pass	
5	B&B Electronics COM Port RS-232 Test (W/Loop-Back)	Pass	

2.8 IrDA Test

1. Windows 2000

Item	Description	Result	Remark
1	Device Manager Check	Pass	
2	SIR Mode Data Transfer Test	Pass	
3	SIR Data Transfer Quality Test	Pass	
4	SIR Loop-Back Test	Pass	

2. Windows XP

Item	Description	Result	Remark
1	Device Manager Check	Pass	
2	SIR Mode Data Transfer Test	Pass	
3	SIR Data Transfer Quality Test	Pass	
4	SIR Loop-Back Test	Pass	

2.9 Keyboard Test

1. MS-DOS 6.22

Item	Description	Result	Remark
1	QAPLUS Keyboard Test	Pass	
2	Keyboard LED Status Test	Pass	
3	Keyboard Command Test	Pass	
4	Keyboard Typing Test	Pass	

2. Windows 98

Item	Description	Result	Remark
1	Device Manager Check	Pass	
2	Keyboard LED Status Test	Pass	
3	Keyboard Typing Test	Pass	

3. Windows 2000

Item	Description	Result	Remark
1	Device Manager Check	Pass	
2	Keyboard LED Status Test	Pass	
3	Keyboard Typing Test	Pass	

4. Windows 2003 Server

Item	Description	Result	Remark
1	Device Manager Check	Pass	
2	Keyboard LED Status Test	Pass	
3	Keyboard Typing Test	Pass	

5. Windows XP

Item	Description	Result	Remark
1	Device Manager Check	Pass	
2	Keyboard LED Status Test	Pass	
3	Keyboard Typing Test	Pass	

6. SUSE-LINUX 10

Item	Description	Result	Remark
1	Device Manager Check	Pass	
2	Keyboard LED Status Test	Pass	
3	Keyboard Typing Test	Pass	

2.10 Mouse Test

1. Windows 98

Item	Description	Result	Remark
1	Device Manager Check	Pass	
2	Mouse Detect Test (PNP)	Pass	
3	Dos Mode Mouse Test	Pass	

2. Windows 2000

Item	Description	Result	Remark
1	Device Manager Check	Pass	
2	Mouse Detect Test (PNP)	Pass	
3	Dos Mode Mouse Test	Pass	

3. Windows XP

Item	Description	Result	Remark
1	Device Manager Check	Pass	
2	Mouse Detect Test (PNP)	Pass	
3	Dos Mode Mouse Test	Pass	

4. SUSE-LINUX 10

Item	Description	Result	Remark
1	Device Manager Check	Pass	
2	Mouse Detect Test (PNP)	Pass	

2.11 LAN Module Test

1. Windows 2000

Item	Description	Result	Remark
1	LAN Module Install Test	Pass	
2	Driver Install	Pass	
3	Device Manager Check	Pass	
4	Data Transfer Test	Pass	

2. Windows 2003 Server

Item	Description	Result	Remark
1	LAN Module Install Test	Pass	
2	Driver Install	Pass	
3	Device Manager Check	Pass	
4	Data Transfer Test	Pass	

3. Windows XP

Item	Description	Result	Remark
1	LAN Module Install Test	Pass	
2	Driver Install	Pass	
3	Device Manager Check	Pass	
4	Data Transfer Test	Pass	

4. SUSE-LINUX 10

Item	Description	Result	Remark
1	LAN Module Install Test	Pass	
2	Driver Install	Pass	
3	Device Manager Check	Pass	
4	Data Transfer Test	Pass	

2.12 Power Supply Test

1. MS-DOS 6.22

Item	Description	Verification	
		Result	Remark
1	ATX Power On/Off	Pass	Seven team ST-300BLV(300W)
2	ATX Power On/Off	Pass	CMT SFX-200CPS3C-TL(200W)
3.	ATX Power On/Off	Pass	FSP FSP180-50PLA(180W)

2. Windows 98

Item	Description	Verification	
		Result	Remark
1	ATX Power On/Off	Pass	Seven team ST-300BLV(300w)
2	ATX Power On/Off	Pass	CMT SFX-200CPS3C-TL(200W)
3	ATX Power On/Off	Pass	FSP FSP180-50PLA(180W)

3. Windows 2000

Item	Description	Verification	
		Result	Remark
1	ATX Power On/Off	Pass	Seven team ST-300BLV(300W)
2	ATX Power On/Off	Pass	CMT SFX-200CPS3C-TL(200W)
3	ATX Power On/Off	Pass	FSP FSP180-50PLA(180W)

4. Windows XP

Item	Description	Verification	
		Result	Remark
1	ATX Power On/Off	Pass	Seven team ST-300BLV(300W)
2	ATX Power On/Off	Pass	CMT SFX-200CPS3C-TL(200W)
3	ATX Power On/Off	Pass	FSP FSP180-50PLA(180W)

5. SUSE-LINUX 10

Item	Description	Verification	
		Result	Remark
1	ATX Power On/Off	Pass	Seven team ST-300BLV(300W)
2	ATX Power On/Off	Pass	CMT SFX-200CPS3C-TL(200W)
3	ATX Power On/Off	Pass	FSP FSP180-50PLA(180W)

2.13 CD-ROM Test

Model: ATAPI A52T

1. MS-DOS 6.22

Item	Description	Result	Remark
1	CD-ROM Detect	Pass	
2	CD-ROM Read	Pass	
3	CD-ROM Bootable	Pass	
4	CD-ROM Data Transfer	Pass	

2. Windows 98

Item	Description	Result	Remark
1	CD-ROM Detect	Pass	
2	CD-ROM Read	Pass	
3	CD-ROM Data Transfer	Pass	

3. Windows 2000

Item	Description	Result	Remark
1	CD-ROM Detect	Pass	
2	CD-ROM Read	Pass	
3	CD-ROM Data Transfer	Pass	

4. Windows 2003 Server

Item	Description	Result	Remark
1	CD-ROM Detect	Pass	
2	CD-ROM Read	Pass	
3	CD-ROM Data Transfer	Pass	

5. Windows XP

Item	Description	Result	Remark
1	CD-ROM Detect	Pass	
2	CD-ROM Read	Pass	
3	CD-ROM Data Transfer	Pass	

6. Suse-Linux 10

Item	Description	Result	Remark
1	CD-ROM Detect	Pass	
2	CD-ROM Read	Pass	
3	CD-ROM Data Transfer	Pass	

Model: ASUS CD-S400/A

1. MS-DOS 6.22

Item	Description	Result	Remark
1	CD-ROM Detect	Pass	
2	CD-ROM Read	Pass	
3	CD-ROM Bootable	Pass	
4	CD-ROM Data Transfer	Pass	

2. Windows 98

Item	Description	Result	Remark
1	CD-ROM Detect	Pass	
2	CD-ROM Read	Pass	
3	CD-ROM Data Transfer	Pass	

3. Windows 2000

Item	Description	Result	Remark
1	CD-ROM Detect	Pass	
2	CD-ROM Read	Pass	
3	CD-ROM Data Transfer	Pass	

4. Windows 2003 Server

Item	Description	Result	Remark
1	CD-ROM Detect	Pass	
2	CD-ROM Read	Pass	
3	CD-ROM Data Transfer	Pass	

5. Windows XP

Item	Description	Result	Remark
1	CD-ROM Detect	Pass	
2	CD-ROM Read	Pass	
3	CD-ROM Data Transfer	Pass	

6. SUSE-LINUX 10

Item	Description	Result	Remark
1	CD-ROM Detect	Pass	
2	CD-ROM Read	Pass	
3	CD-ROM Data Transfer	Pass	

Model: Pioneer DVD 820

1. MS-DOS 6.22

Item	Description	Result	Remark
1	CD-ROM Detect	Pass	
2	CD-ROM Read	Pass	
3	CD-ROM Bootable	Pass	
4	CD-ROM Data Transfer	Pass	

2. Windows 98

Item	Description	Result	Remark
1	CD-ROM Detect	Pass	
2	CD-ROM Read	Pass	
3	CD-ROM Data Transfer	Pass	

3. Windows 2000

Item	Description	Result	Remark
1	CD-ROM Detect	Pass	
2	CD-ROM Read	Pass	
3	CD-ROM Data Transfer	Pass	

4. Windows 2003 Server

Item	Description	Result	Remark
1	CD-ROM Detect	Pass	
2	CD-ROM Read	Pass	
3	CD-ROM Data Transfer	Pass	

5. Windows XP

Item	Description	Result	Remark
1	CD-ROM Detect	Pass	
2	CD-ROM Read	Pass	
3	CD-ROM Data Transfer	Pass	

6. Fedora Core.4 (Linux)

Item	Description	Result	Remark
1	CD-ROM Detect	Pass	
2	CD-ROM Read	Pass	
3	CD-ROM Data Transfer	Pass	

Model: QSI DVD SDR-083

1. MS-DOS 6.22

Item	Description	Result	Remark
1	CD-ROM Detect	Pass	
2	CD-ROM Read	Pass	
3	CD-ROM Bootable	Pass	
4	CD-ROM Data Transfer	Pass	

2. Windows 98

Item	Description	Result	Remark
1	CD-ROM Detect	Pass	
2	CD-ROM Read	Pass	
3	CD-ROM Data Transfer	Pass	

3. Windows 2000

Item	Description	Result	Remark
1	CD-ROM Detect	Pass	
2	CD-ROM Read	Pass	
3	CD-ROM Data Transfer	Pass	

4. Windows 2003 Server

Item	Description	Result	Remark
1	CD-ROM Detect	Pass	
2	CD-ROM Read	Pass	
3	CD-ROM Data Transfer	Pass	

5. Windows XP

Item	Description	Result	Remark
1	CD-ROM Detect	Pass	
2	CD-ROM Read	Pass	
3	CD-ROM Data Transfer	Pass	

6. Suse-Linux 10

Item	Description	Result	Remark
1	CD-ROM Detect	Pass	
2	CD-ROM Read	Pass	
3	CD-ROM Data Transfer	Pass	

2.14 Floppy Drive Test

Model: Sony (MPF920-E)

1. MS-DOS 6.22

Item	Description	Result	Remark
1	Floppy Drive Detect	Pass	
2	Floppy Read/Write	Pass	
3	Boot from Floppy	Pass	
4	Floppy Data Transfer	Pass	

2. Windows 98

Item	Description	Result	Remark
1	Floppy Drive Detect	Pass	
2	Floppy Read/Write	Pass	
3	Floppy Data Transfer	Pass	

3. Windows 2000

Item	Description	Result	Remark
1	Floppy Drive Detect	Pass	
2	Floppy Read/Write	Pass	
3	Floppy Data Transfer	Pass	

4. Windows 2003 Server

Item	Description	Result	Remark
1	Floppy Drive Detect	Pass	
2	Floppy Read/Write	Pass	
3	Floppy Data Transfer	Pass	

5. Windows XP

Item	Description	Result	Remark
1	Floppy Drive Detect	Pass	
2	Floppy Read/Write	Pass	
3	Floppy Data Transfer	Pass	

6. SUSE-LINUX 10

Item	Description	Result	Remark
1	Floppy Drive Detect	Pass	
2	Floppy Read/Write	Pass	
3	Floppy Data Transfer	Pass	

2.15 Printer Port Test

1. Windows 2000

Item	Description	Result	Remark
1	ECP/EPP PRINT TEST	Pass	

2. Windows XP

Item	Description	Result	Remark
1	ECP/EPP PRINT TEST	Pass	

2.16 Boot Up Test

Item	Description	Result	Remark
3	Soft boot from HDD	Pass	Times
4	Soft boot from CD-ROM	Pass	Times
5	Reboot test with Win 98	Pass	Times
6	Reboot test with Win 2000	Pass	Times
7	Reboot test with Win 2003 Server	Pass	Times
8	Reboot test with Win XP	Pass	Times
9	Reboot test with Suse-Linux 10	Pass	Times

2.17 Os Install

Item	Description	Result	Remark
1	Windows 98	PASS	
2	Windows 2000 SP4	PASS	
3	Windows XP SP2	PASS	
4	Windows Server 2003	PASS	
5	Linux "Suse 10"	PASS	

3. Environmental test

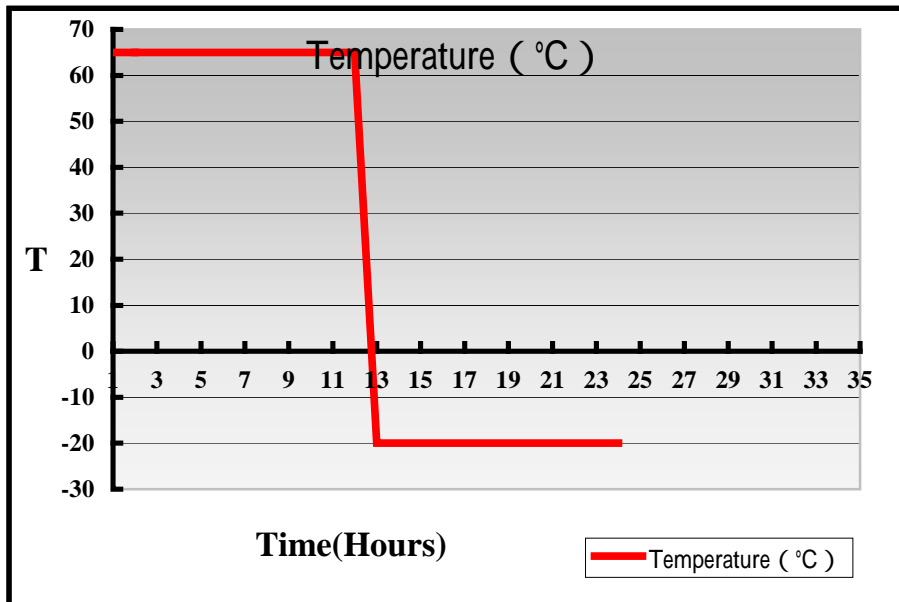
3.1 Temperature Test

Hardware Device list:

System Board	HS-770
CPU	Intel Pentium M 2.26GHZ
Memory	SAMSUNG DDR2 533 1GB
HDD	Seagate 4.3GB Model: ST34321A
KEYBOARD	KRONE K9810
MOUSE	DCS USBMOUSE
Test Equipment	THERMOTRON 2800 Programmer/Controller
Test Program	BCM

Test Result:

Item	Description	Result	Remark
1	65°C RUN 3Dmark03	Pass	
2	-20°C Boot Test	Pass	



4. Reliability Test

4.1 Power Consumption Test

1. Test Environment:

CPU	Pentium M 2.26GHZ
Memory	SAMSUNG DDRII 533 1GB SAMSUNG DDRII 533 1GB
HDD	Western Digital WD1600 160GB
Test OS	Windows XP
Test Program	PCMARK 2005

Test Result:

Voltae	Current (A)	Power (W)	Remark
5V	10.5	52.5	
12V	0.62	7.44	

2. Test Environment:

CPU	Pentium M 2.26GHZ
Memory	SAMSUNG DDRII 533 1GB SAMSUNG DDRII 533 1GB
HDD	Western Digital WD1600 160GB
15" Pannel	LG LM150X08 (Dual Display)
Test OS	Windows XP
Test Program	PCMARK 2005

Test Result:

Voltae	Current (A)	Power (W)	Remark
5V	11.56	58.0	
12V	1.4	16.8	

3.Test Environment:

CPU	Pentium M 2.26GHZ
Memory	SAMSUNG DDRII 533 1GB SAMSUNG DDRII 533 1GB
HDD	Western Digital WD1600 160GB
CDROM	ATAPI A52T 52X
Test Program	PCMARK 2005

Test Result:

Voltae	Current (A)	Power (W)	Remark
5V	10.93	54.65	
12V	0.62	7.44	

4.Test Environment:

CPU	Pentium M 2.26GHZ
Memory	SAMSUNG DDRII 533 1GB SAMSUNG DDRII 533 1GB
HDD1	Western Digital WD1600 160GB
HDD2	Western Digital WD400 40GB
FDD	SONY MPF920-E
CDROM	ATAPI A52T 52X
Test OS	Windows XP
Test Program	PCMARK 2005

Test Result:

Voltae	Current (A)	Power (W)	Remark
5V	11.37	56.85	
12V	0.74	8.88	

5.Test Environment:

CPU	Pentium M 2.26GHZ
Memory	SAMSUNG DDRII 533 1GB SAMSUNG DDRII 533 1GB
HDD1	Western Digital WD1600 160GB
HDD2	Western Digital WD400 40GB
FDD	SONY MPF920-E
IrDA	ACT-IR210L
Mini-PCI WLAN	TwinMOS 802.11g
CDROM	ATAPI A52T 52X
Test OS	Windows XP
Test Program	PCMARK 2005

Test Result:

Voltae	Current (A)	Power (W)	Remark
5V	11.54	56.05	
12V	0.85	10.1	

6.Test Environment:

CPU	Pentium M 2.26GHZ
Memory	SAMSUNG DDRII 533 1GB SAMSUNG DDRII 533 1GB
Monitor1	Viewsonic VX700
Monitor2	LG LM150X08 (Dual Display)
HDD1	Western Digital WD1600 160GB
HDD2	Western Digital WD400 40GB
FDD	SONY MPF920-E
IrDA	ACT-IR210L
Mini-PCI WLAN	TwinMOS 802.11g
CDROM	ATAPI A52T 52X
Test OS	Windows XP
Test Program	PCMARK 2005

Test Result:

Voltae	Current (A)	Power (W)	Remark
5V	12.76	62.2	
12V	1.49	17.88	

4.2 Thermal measurements at various points on the board

Test Environment A:

CPU	Pentium M 2.26GHZ
Memory	SAMSUNG DDRII 533 1GB SAMSUNG DDRII 533 1GB
HDD	Western Digital WD1600 160GB
15" LCD PANNEL	LG LM150X80
CDROM	ATAPI A52T 52X
Test Program	3DMark 2005

Test Result:

CPU	45.0°C
NB	48.5°C
SB	58.5°C
U3	49.0°C
U6	56.3°C
U4	60.3°C
U21	56.4°C

Test Environment B:

CPU	Pentium M 2.26GHZ
Memory	SAMSUNG DDRII 533 1GB SAMSUNG DDRII 533 1GB
HDD	Western Digital WD1600 160GB
15" LCD PANNEL	LG LM150X80
CRDROM	ATAPI A52T 52X
Test Program	Multimedia Content Creation Winstone 2004

Test Result:

CPU	43.1°C
NB	45.4°C
SB	56.9°C
U3	47.4°C
U6	55.9°C
U4	59.5°C
U21	52.4°C

5. Performance Test

5.1 Business Win Stone 2001

Processor: Intel Pentium M 2.26GHZ

2. Windows 2000

Item	WEIGHTED SUITE	Result	Remark
1	Business Win stone 2001 Win stone 2001 Scores	Pass	76.1 73.6 74.0 75.3 74.6

3. Windows 2003 Server

Item	WEIGHTED SUITE	Result	Remark
1	Business Win stone 2001 Win stone 2001 Scores	Pass	39.8 33.1 52.3 53.4 54.5

5.2 Business Win Stone 2002

Processor: Intel Pentium M 2.26GHZ

1. Windows 2000

Item	WEIGHTED SUITE	Result	Remark
1	Business Win stone 2002 Win stone 2002 Scores	Pass	38.2 37.8 37.9 37.1 37.0

2. Windows 2003

Item	WEIGHTED SUITE	Result	Remark
1	Business Win stone 2002 Win stone 2002 Scores	Pass	29.1 30.0 29.7 30.0 29.9

3. Windows XP

Item	WEIGHTED SUITE	Result	Remark
1	Business Win stone 2002 Win stone 2002 Scores	Pass	29.7 32.1 32.7 32.8 32.3

5.3 Multimedia Content Creation Winstone 2003

1. Windows 2000

Item	WEIGHTED SUITE	Result	Remark
1	Multimedia Content Creation Winstone 2003 Scores	Pass	56.1 56.7 56.5 56.9 56.4

2. Windows XP

Item	WEIGHTED SUITE	Result	Remark
1	Multimedia Content Creation Winstone 2003 Scores	Pass	53.6 54.9 54.7 55.5 55.1

5.4 Multimedia Content Creation Winstone 2004

1. Windows 2000

Item	WEIGHTED SUITE	Result	Remark
1	Multimedia Content Creation Winstone 2004 Scores	Pass	28.2 28.5 28.5 28.5 28.4

2. Windows XP

Item	WEIGHTED SUITE	Result	Remark
1	Multimedia Content Creation Winstone 2004 Scores	Pass	30.8 31.1 30.9 31.2 30.4

5.5 3D MARK

Processor: Intel Pentium M 2.26GHZ

1. Windows 2000

Item	WEIGHTED SUITE	Result	Remark
1	3DMARK2001 Scores	Pass	4717
2	3DMARK2003 Scores	Pass	941
3	3DMARK2005 Scores	Pass	236

2. Windows XP

Item	WEIGHTED SUITE	Result	Remark
1	3DMARK2001 Scores	Pass	4709
2	3DMARK2003 Scores	Pass	943
3	3DMARK2005 Scores	Pass	274

5.6 PCMARK 2002

Processor: Intel Pentium M 2.26GHZ

2. Windows 2000

Item	WEIGHTED SUITE	Result	Remark
1	CPU Score	Pass	7699
2	Memory Score	Pass	13575
3	HDD Score	Pass	681

3. Windows 2003 Server

Item	WEIGHTED SUITE	Result	Remark
1	CPU Score	Pass	7662
2	Memory Score	Pass	13384
3	HDD Score	Pass	777

3. Windows XP

Item	WEIGHTED SUITE	Result	Remark
1	CPU Score	Pass	7685
2	Memory Score	Pass	13515
3	HDD Score	Pass	1506

5.7 PCMARK 2004

Processor: Intel Pentium M 2.26GHZ

2. Windows 2000

Item	WEIGHTED SUITE	Result	Remark
1	CPU Score	Pass	N/A
2	Memory Score	Pass	3547
3	HDD Score	Pass	1866
4	Graphics Score	Pass	1029

3. Windows XP

Item	WEIGHTED SUITE	Result	Remark
1	CPU Score	Pass	4335
2	Memory Score	Pass	34.3
3	HDD Score	Pass	5184
4	Graphics Score	Pass	763

5.8 PCMARK 2005

Processor: Intel Pentium M 2.26GHZ

3. Windows XP

Item	WEIGHTED SUITE	Result	Remark
1	CPU Score	Pass	3572
2	Memory Scores	Pass	3087
3	HDD Score	Pass	5331
	Graphics Score	Pass	771