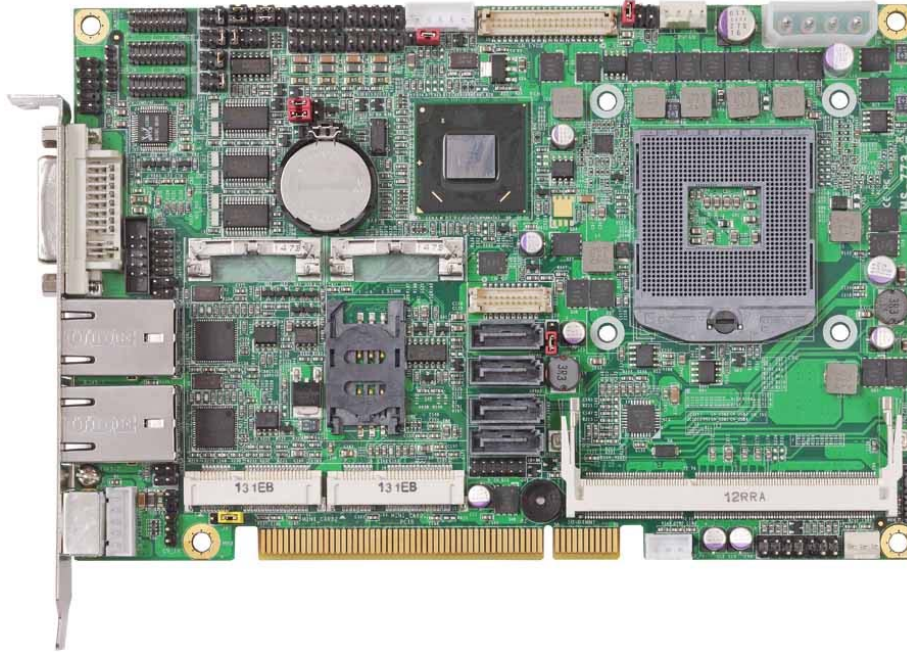


Product Test Report



Product Name	HS-773
Product Version	A
Issued Date	2012.03.28
Report Edition	1.0
BIOS Version	1.0
Testing Engineer	RICK
Check Engineer	JEFF

REVISION HISTORY			
DATE	REVISION NO.	PAGE	DESCRIPTONS
2012.03.28	Ver. 1.0	83	Initial Release

Index

1. Function test.....	5
1.1 Hardware function.....	5
1.2 BIOS function	7
1.3 Driver	9
2. Compatibility test	12
2.1 CPU Test.....	12
2.2 Operation System Test	13
2.3 Memory Test	14
2.4 VGA Graphic Quality Test.....	15
2.5 Audio	16
2.6 HDD Test	19
2.7 DVD-ROM Test	20
2.8 USB device Test	21
2.9 Serial Port Test	23
2.10 PS2 Keyboard 、 Mouse Test.....	26
2.11 LAN Test.....	28
2.12 Power Supply Test	30
2.13 PCI Express mini card	31
2.14 Back plane	32
3. Environmental test	33
3.1 Temperature Test.....	33
3.2 Thermal measurements at various points on the board	36
4. Reliability Test	39
4.1 Power Consumption Test	39
5. Performance Test	59
5.1 Business Win Stone 2002.....	59

5.2 Business Win Stone 2004.....	60
5.3 Content Creation Winstone 2004.....	61
5.4 3D MARK(2001、2003、2005).....	62
5.5 3D MARK2006.....	65
5.6 PC MARK2002.....	67
5.7 PC MARK2004.....	68
5.8 PC MARK2005.....	71
5.9 Storage Performance.....	81
5.10 Vibration Test.....	83

1. Function test

1.1 Hardware function

Base Function Test

Item	Description	Result
1	Power Button	PASS
2	Reset	PASS
3	Power LED	PASS
4	HDD LED	PASS
5	SATA 1 / 2 / 3 / 4	PASS
6	DDR3 1 / 2	PASS
7	USB 1 / 2 / 3 / 4 / 5 / 6 / 7 / 8	PASS
8	COM 1 / 2 / 3 / 4 / 5 / 6	PASS
9	CN_CRT	PASS
10	PS2	PASS
11	LAN_1 / 2	PASS
12	CD_IN	PASS
13	CN_AUDIO	PASS
14	DIO	PASS
15	IrDA	PASS
16	DVI	PASS
17	LVDS	PASS
18	CPUFAN	PASS
19	SYSFAN	PASS
20	MINI CARD 1 / 2	PASS
21	PCI 1 / 2 / 3 / 4	PASS

Jumper

Item	Description	Result
1	JRTC	PASS
2	JCSEL1	PASS
3	JCSEL2	PASS
4	JVLCD	PASS
5	JAT	PASS

1.2 BIOS function

Item	Description	Result	Remark
1	Press 'Del' to run Setup Utility	PASS	
2	Ctrl-Alt-Del – Soft-Reboot	PASS	
3	Save & Exit Setup	PASS	
4	Date & Time Setting	PASS	
5	NumLock	PASS	
6	Select Language	PASS	
7	Quick Boot	PASS	
8	Console Redirection	PASS	
9	Active Processor Cores	PASS	
10	Intel (R) HT Technology	PASS	
11	SATA Device	PASS	
12	Interface Combination	PASS	
13	DVMT Total Gfx Mem	PASS	
14	IGD-Boot Type (No include SDVOD/X)	PASS	
15	IGD-LCD Panel type	PASS	
16	Panel Color Depth	PASS	
17	USB Per-Port Disabled Control	PASS	
18	SB Azalia Config	PASS	
19	LAN OPROM Selection	PASS	
20	Serial Port	PASS	
21	IR Func.	PASS	
22	Watch Dog Timer Select	PASS	
23	Power Control	PASS	
24	Power On By RTC Alarm	PASS	
26	Set Supervisor Password	PASS	

27	Set User Password	PASS	
----	-------------------	------	--

1.3 Driver

CD Edition : IPCi4-1.0

1. Windows XP SP2 32-bit driver test

Item	Description	Result	Version
1	Chipset Driver	PASS	9.2.0.1025
2	VGA Driver	PASS	6.14.10.5337
3	Audio Driver	PASS	5.10.0.6101
4	LAN Driver	PASS	10.3.49.0

2. Windows XP SP2 64-bit driver test

Item	Description	Result	Version
1	Chipset Driver	PASS	9.2.0.1025
2	VGA Driver	PASS	6.14.10.5337
3	Audio Driver (Need UAA bus driver)	PASS	5.10.0.6101
4	LAN Driver	PASS	11.11.43.0

3. Windows Server 2003 32-bit Driver Test

Item	Description	Result	Version
1	Chipset Driver	PASS	9.2.0.1025
2	Audio Driver	PASS	5.10.0.6101
3	LAN Driver	PASS	10.3.49.0

4. Windows Server 2003 64-bit driver test

Item	Description	Result	Version
1	Chipset Driver	PASS	9.2.0.1025
2	Audio Driver	PASS	5.10.0.6101
3	LAN Driver	PASS	11.11.43.0

5. Windows Vista 32-bit driver test

Item	Description	Result	Version
1	Chipset Driver	PASS	9.2.0.1025
2	VGA Driver	PASS	8.15.10.2321
3	Audio Driver	PASS	6.0.1.6101
4	LAN Driver	PASS	10.3.49.0

6. Windows Vista 64-bit driver test

Item	Description	Result	Version
1	Chipset Driver	PASS	9.2.0.1025
2	VGA Driver	PASS	8.15.10.2321
3	Audio Driver	PASS	6.0.1.6101
4	LAN Driver	PASS	10.3.49.0

7. Windows Server 2008 32-bit driver test

Item	Description	Result	Version
1	Chipset Driver	PASS	9.2.0.1025
2	Audio Driver	PASS	6.0.1.6101
3	LAN Driver	PASS	10.3.49.0

8. Windows Server 2008 64-bit driver test

Item	Description	Result	Version
1	Chipset Driver	PASS	9.2.0.1025
2	Audio Driver	PASS	6.0.1.6101
3	LAN Driver	PASS	10.3.49.0

9. Windows 7 32-bit Driver Test

Item	Description	Result	Version
1	Chipset Driver	PASS	9.2.0.1025
2	VGA Driver	PASS	8.15.10.2321
3	Audio Driver	PASS	6.0.1.6101

10. Windows 7 64-bit Driver Test

Item	Description	Result	Version
1	Chipset Driver	PASS	9.2.0.1025
2	VGA Driver	PASS	8.15.10.2321
3	Audio Driver	PASS	6.0.1.6101

2. Compatibility test

2.1 CPU Test

Test environment:

OS Windows XP professional SP2

Test program : PC MARK 2005

Spec	CPU Speed	Family	Processor	DMI	Smart Cache	Result
SR02T	2.10 GHz	Core	i7-2710QE	5 GT/s	6 MB	PASS
SR02U	2.50 GHz	Core	i5-2510E	5 GT/s	3 MB	PASS
SR02V	2.20 GHz	Core	i3-2330E	5 GT/s	3 MB	PASS
SR088	1.60 GHz	Celeron	B810	5 GT/s	2 MB	PASS

2.2 Operation System Test

Item	Description	Result	Remark
1	Windows 7 64-bit	PASS	
2	Windows 7 32-bit	PASS	
3	Windows Server 2008 64-bit	PASS	
4	Windows Server 2008 32-bit	PASS	
5	Windows Vista 64-bit	PASS	
6	Windows Vista 32-bit	PASS	
7	Windows XP SP2 64-bit	PASS	
8	Windows XP SP2 32-bit	PASS	
9	Windows Server 2003 64-bit	PASS	
10	Windows Server 2003 32-bit	PASS	

2.3 Memory Test

Test environment:

OS Windows XP professional SP2

Test program : PC MARK 2005

Manufacturer	Chip	Frequency	Capacity Mbytes	Result
Kingston	K4B2G0846B-HCFB	DDR3 1066	4 GB	PASS
Kingston	D2568JENC PGD9U	DDR3 1333	4 GB	PASS
Kingston	D1288JEMF PGD9U	DDR3 1333	1 GB	PASS
A-DATA	J2108BCSE-GN-F	DDR3 1600	4 GB	PASS
A-DATA	K4B1G0846D	DDR3 1066	2 GB	PASS
A-DATA	K4B1G0846D	DDR3 1066	1 GB	PASS
INNODISK	H5TQ2G83CFR	DDR3 1333	4 GB	PASS
INNODISK	H5TQ2G83CFR	DDR3 1333	2 GB	PASS
Transcend	K4B1G0846D	DDR3 1066	2 GB	PASS
Kingston	J4208BASE-DJ-F	DDR3 1333	8 GB	PASS

2.4 VGA Graphic Quality Test

Test environment:

OS Windows XP professional SP2 32/64-bit

Driver version : 6.14.10.5337

Resolution	Color	Result	Remark
800*600	16 / 32bit	PASS	
1024*768	16 / 32bit	PASS	
1152*864	16 / 32bit	PASS	
1280*600	16 / 32bit	PASS	
1280*720	16 / 32bit	PASS	
1280*768	16 / 32bit	PASS	
1280*800	16 / 32bit	PASS	
1280*960	16 / 32bit	PASS	
1280*1024	16 / 32bit	PASS	
1360*768	16 / 32bit	PASS	
1366*768	16 / 32bit	PASS	
1400*1050	16 / 32bit	PASS	
1440*900	16 / 32bit	PASS	
1600*900	16 / 32bit	PASS	
1600*1200	16 / 32bit	PASS	
1680*1050	16 / 32bit	PASS	
1792*1344	16 / 32bit	PASS	
1920*1080	16 / 32bit	PASS	
1920*1200	16 / 32bit	PASS	

2.5 Audio

Test environment:

OS Windows XP professional SP2 32-bit

Driver version : 5.10.0.6101

Item	Description	Result	Remark
1	2 CH	PASS	
2	Microphone	PASS	
3	CDIN	PASS	

OS Windows XP professional SP2 64-bit

Driver version : 5.10.0.6101

Item	Description	Result	Remark
1	2 CH	PASS	
2	Microphone	PASS	
3	CDIN	PASS	

OS Windows Server 2003 32-bit

Driver version : 5.10.0.6101

Item	Description	Result	Remark
1	2 CH	PASS	
2	Microphone	PASS	
3	CDIN	PASS	

OS Windows Server 2003 64-bit

Driver version : 5.10.0.6101

Item	Description	Result	Remark
1	2 CH	PASS	
2	Microphone	PASS	
3	CDIN	PASS	

OS Windows Vista 32 bit
Driver version : 6.0.1.6101

Item	Description	Result	Remark
1	2 CH	PASS	
2	Microphone	PASS	
3	CDIN	PASS	

OS Windows Vista 64 bit
Driver version : 6.0.1.6101

Item	Description	Result	Remark
1	2 CH	PASS	
2	Microphone	PASS	
3	CDIN	PASS	

OS Windows Server 2008 32-bit
Driver version : 6.0.1.6101

Item	Description	Result	Remark
1	2 CH	PASS	
2	Microphone	PASS	
3	CDIN	PASS	

OS Windows Server 2008 64-bit
Driver version : 6.0.1.6101

Item	Description	Result	Remark
1	2 CH	PASS	
2	Microphone	PASS	
3	CDIN	PASS	

OS Windows 7 32-bit
Driver version : 6.0.1.6101

Item	Description	Result	Remark
1	2 CH	PASS	
2	Microphone	PASS	
3	CDIN	PASS	

OS Windows 7 64-bit
Driver version : 6.0.1.6101

Item	Description	Result	Remark
1	2 CH	PASS	
2	Microphone	PASS	
3	CDIN	PASS	

2.6 HDD Test

Test environment:

OS Windows XP professional SP2

Model	Interface	Capacity	Size Detect	Data Transfer
Western Digital WD10EALX-009BA0	SATA	1.0 TB	PASS	PASS
Western Digital WD5000AAKS-00V1A0	SATA	500 GB	PASS	PASS
Western Digital WD5000AAKX-001CA0	SATA	500 GB	PASS	PASS
Western Digital WD3200AAJS-00YZCA0	SATA	320 GB	PASS	PASS

2.7 DVD-ROM Test

Test environment:

OS Windows XP professional SP2

Model	Interface	Detect	Data Transfer	Play CD
LG DVD GH20NS15	SATA	PASS	PASS	PASS
PIONEER DVD DVR-S19LBK	SATA	PASS	PASS	PASS
PIONEER DVD DVR-212BK	SATA	PASS	PASS	PASS
LITEON DVD eTAU108	USB	PASS	PASS	PASS

2.8 USB device Test

1. Windows XP SP2 32/64-bit

Item	Result	Remark
External USB Keyboard Test	PASS	
External USB Mouse Test	PASS	
Hot plugging test	PASS	
CD ROM	PASS	
USB Mass storage	PASS	

2. Windows Server 2003 32/64-bit

Item	Result	Remark
External USB Keyboard Test	PASS	
External USB Mouse Test	PASS	
Hot plugging test	PASS	
CD ROM	PASS	
USB Mass storage	PASS	

3. Windows Vista 32/64-bit

Item	Result	Remark
External USB Keyboard Test	PASS	
External USB Mouse Test	PASS	
Hot plugging test	PASS	
CD ROM	PASS	
USB Mass storage	PASS	

4. Windows Server 2008 32/64-bit

Item	Result	Remark
External USB Keyboard Test	PASS	
External USB Mouse Test	PASS	
Hot plugging test	PASS	
CD ROM	PASS	
USB Mass storage	PASS	

5. Windows 7 32/64-bit

Item	Result	Remark
External USB Keyboard Test	PASS	
External USB Mouse Test	PASS	
Hot plugging test	PASS	
CD ROM	PASS	
USB Mass storage	PASS	

2.9 Serial Port Test

1. MS-DOS

Item	Description	Result	Remark
1	RS-422 & RS-485	PASS	
2	CHKIT	PASS	

2. Windows XP SP2 32-bit

Item	Description	Result	Remark
1	Device Manager Check	PASS	
2	RS-232 Mouse Test	PASS	
3	b&b com port test	PASS	

3. Windows XP SP2 64-bit

Item	Description	Result	Remark
1	Device Manager Check	PASS	
2	RS-232 Mouse Test	PASS	

4. Windows Server 2003 32-bit

Item	Description	Result	Remark
1	Device Manager Check	PASS	
2	RS-232 Mouse Test	PASS	
3	b&b com port test	PASS	

5. Windows Server 2003 64-bit

Item	Description	Result	Remark
1	Device Manager Check	PASS	
2	RS-232 Mouse Test	PASS	

6. Windows Vista 32-bit

Item	Description	Result	Remark
1	Device Manager Check	PASS	
2	RS-232 Mouse Test	PASS	

7. Windows Vista 64-bit

Item	Description	Result	Remark
1	Device Manager Check	PASS	
2	RS-232 Mouse Test	PASS	

8. Windows Server 2008 32-bit

Item	Description	Result	Remark
1	Device Manager Check	PASS	
2	RS-232 Mouse Test	PASS	
3	b&b com port test	PASS	

9. Windows Server 2008 64-bit

Item	Description	Result	Remark
1	Device Manager Check	PASS	
2	RS-232 Mouse Test	PASS	

10. Windows 7 32-bit

Item	Description	Result	Remark
1	Device Manager Check	PASS	
2	RS-232 Mouse Test	PASS	

11. Windows 7 64-bit

Item	Description	Result	Remark
1	Device Manager Check	PASS	
2	RS-232 Mouse Test	PASS	

2.10 PS2 Keyboard 、 Mouse Test

1. MS-DOS

Item	Description	Result	Remark
1	Keyboard LED Status Test	PASS	
2	Keyboard Typing Test	PASS	
3	Mouse Detect Test	PASS	

2. Windows XP SP2 32/64-bit

Item	Description	Result	Remark
1	Keyboard LED Status Test	PASS	
2	Keyboard Typing Test	PASS	
3	Mouse Detect Test	PASS	

3. Windows Server 2003 32/64-bit

Item	Description	Result	Remark
1	Keyboard LED Status Test	PASS	
2	Keyboard Typing Test	PASS	
3	Mouse Detect Test	PASS	

4. Windows Vista 32/64-bit

Item	Description	Result	Remark
1	Keyboard LED Status Test	PASS	
2	Keyboard Typing Test	PASS	
3	Mouse Detect Test	PASS	

5. Windows Server 2008 32/64-bit

Item	Description	Result	Remark
1	Keyboard LED Status Test	PASS	
2	Keyboard Typing Test	PASS	
3	Mouse Detect Test	PASS	

6. Windows 7 32/64-bit

Item	Description	Result	Remark
1	Keyboard LED Status Test	PASS	
2	Keyboard Typing Test	PASS	
3	Mouse Detect Test	PASS	

2.11 LAN Test

Data Transfer Test environment:

-CAT 6 UTP 100M

-8 HR. continuous

1. Windows XP SP2 32/64-bit

32-bit driver version : 10.3.49.0

Item	Description	Result	Remark
1	Device Manager Check	PASS	
2	Data Transfer Test	PASS	

2. Windows Server 2003 32/64-bit

32-bit driver version : 10.3.49.0 ; 64-bit driver version : 11.11.43.0

Item	Description	Result	Remark
1	Device Manager Check	PASS	
2	Data Transfer Test	PASS	

3. Windows Vista 32/64-bit

32/64-bit driver version : 10.3.49.0

Item	Description	Result	Remark
1	Device Manager Check	PASS	
2	Data Transfer Test	PASS	

4. Windows Server 2008 32/64-bit

32/64-bit driver version : 10.3.49.0

Item	Description	Result	Remark
1	Device Manager Check	PASS	
2	Data Transfer Test	PASS	

5. Windows Server 7 32/64-bit

Item	Description	Result	Remark
1	Device Manager Check	PASS	

2.12 Power Supply Test

Item	TYPE	Description	Result	Remark
1	ATX Power	CHANNEL WELL TECHNOLOGY CWT-300ATX12 300W	PASS	
2	ATX Power	HIGH POWER HPC-250-101 A/OEM 250W	PASS	
3	ATX Power	CHANNEL WELL TECHNOLOGY SFX-200CPS3C-TL 200W	PASS	
4	ATX Power	SWITCHING POWER SUPPLY MC-B350ATX	PASS	
5	ATX Power	Enhance ENP-2120A 200W	PASS	
6	ATX Power	Enhance ENP-2322C 220W	PASS	
7	ATX Power	Seventeam ST-300BKV 280W	PASS	
8	ATX Power	AcBel ATX-350P-DNSS 350W	PASS	

2.13 PCI Express mini card

Motherboard	PCI Express mini card	Remark
HS-773	MPX-954	PASS
	MPX-954E	PASS
	MPX-827	PASS
	MPX-574D	PASS
	MPX-574D2	PASS
	MPX-643	PASS
	MPX-885	PASS
	MPX-7202	PASS
	MPX-TP4R	PASS
	MPX-1040	PASS
	MPX-6864	PASS

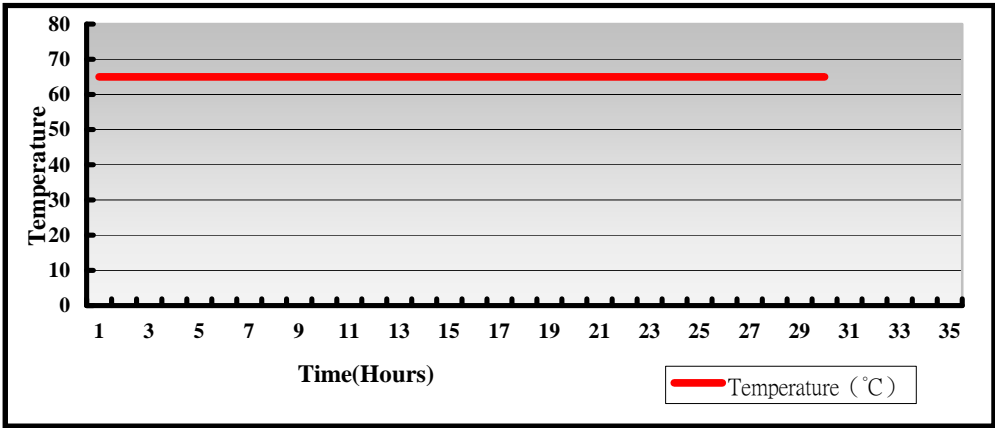
2.14 Back plane

Item	Brand	Model	Result	Remark
1	Commell	CBP-5P4	PASS	

3. Environmental test

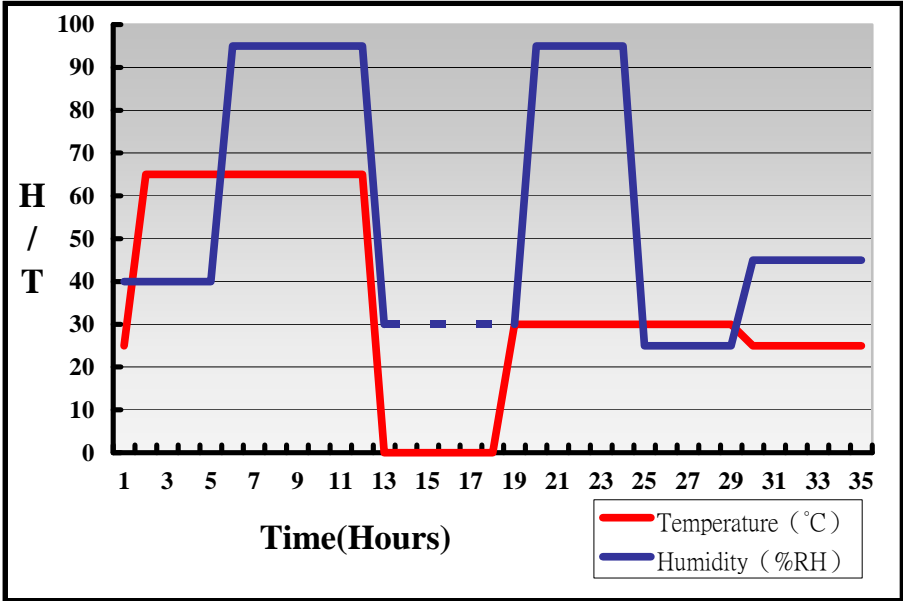
3.1 Temperature Test

System Board	HS-773
CPU	Intel® Core™ i5-2510E 2.50GHz
Memory	Kingston DDR3 1066 4GB (K4B2G0846B-HCFB)
HDD	Western Digital WD10EALX-009BA0 1.0TB
Operating OS	Windows XP SP2 32-bit
Test Equipment	GIANT FORCE (GTH-150-60-CP-AR)
Test Program	3DMark 2003



Hardware Device list:

System Board	HS-773+ CBP-5P4
CPU	Intel® Core™ i7-2710QE 2.10GHz
Memory	Kingston DDR3 1066 4GB (K4B2G0846B-HCFB)
HDD	Western Digital WD10EALX-009BA0 1.0TB
Operating OS	Windows XP SP2 64-bit
Test Equipment	GIANT FORCE (GTH-150-60-CP-AR)
Test Program	3DMark 2003



Definition : When the temperature is 30 degrees below arrive, humidity measurements have not, so by the dashed line express.

Boot Up Test:**Hardware Device list:**

System Board	HS-773
CPU	Intel® Core™ i3-2330E 2.20GHz
Memory	A-DATA DDR3 1066 2GB (K4B1G0846D)
HDD	Hitachi HTS543216L9A300 160GB

Temperature	Result	Remark
-15°C	PASS	50 Times
70°C	PASS	50 Times

3.2 Thermal measurements at various points on the board

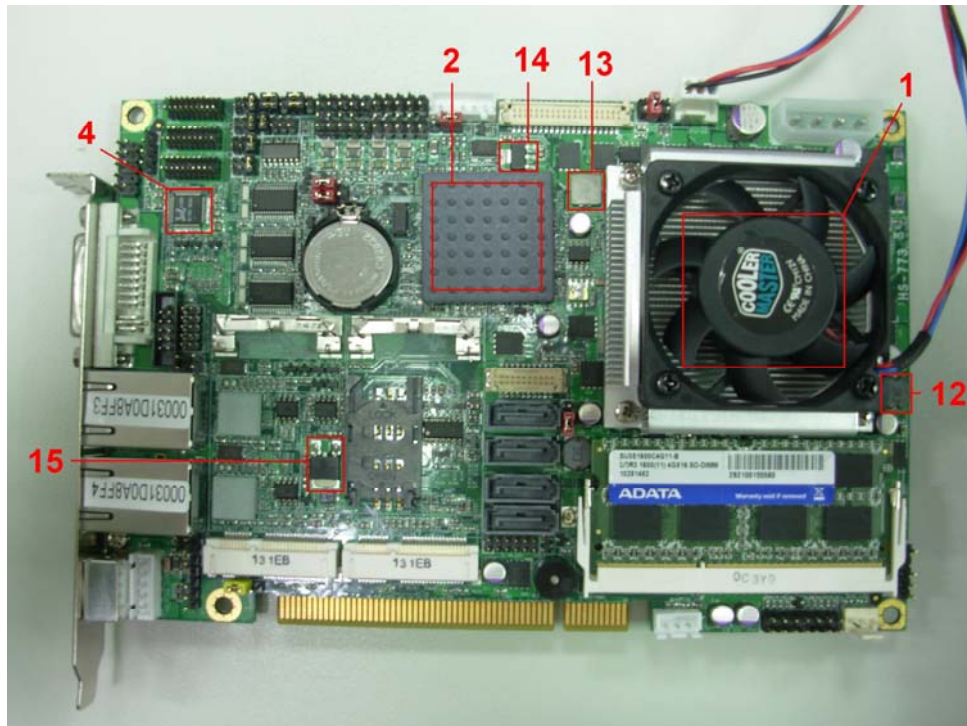
Test Environment :

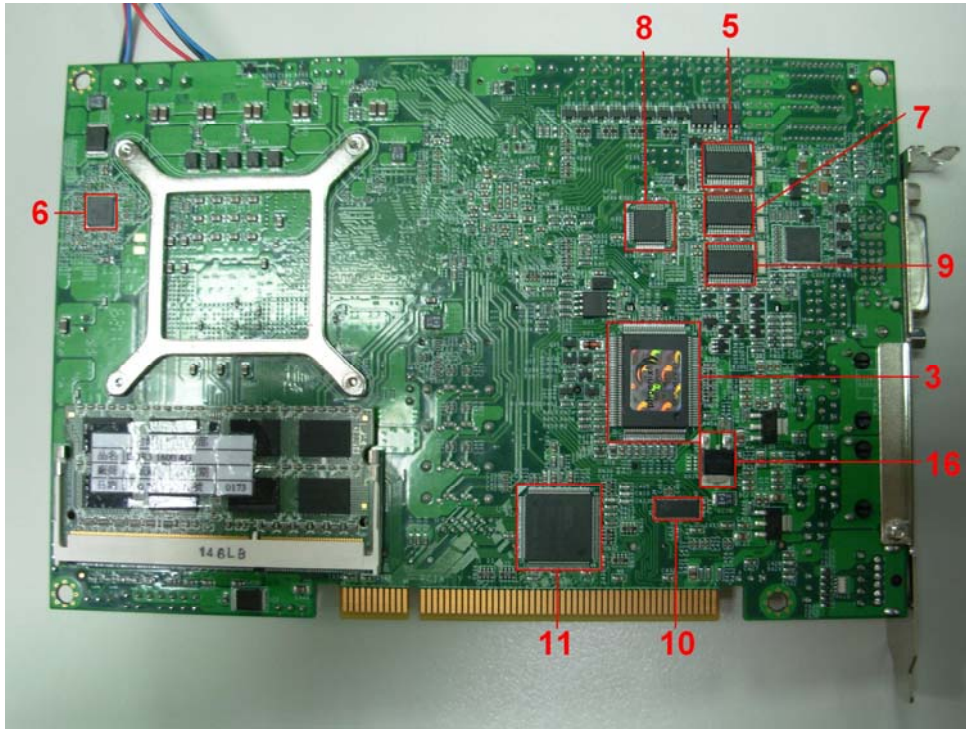
CPU	Intel® Core™ i7-2710QE 2.10 GHz
Memory	A-DATA DDR3 1600 4GB*2 (J2108BCSE-GN-F)
HDD	Western Digital WD10EALX-009BA0 1.0TB
Power	HIGH POWER HPC-250-101 A/OEM
Operating System	Windows XP 64-bit
Test Program	Burnin 6.0

Test Result:

Item	Environmental temperature	27.5°C
1	CPU	76°C
2	PCH(QM67)	68.6°C
3	LPCIO (ICH83627DHG-P)	52.6°C
4	U4 (ICHALC888)	50.3°C
5	U26 (CADM213ECA-T)	54.2°C
6	U29 (ISL 95831HRTZ)	77.7°C
7	U30 (CADM213ECA-T)	53.5°C
8	U32 (ICHF81216D)	55.2°C
9	U36 (CADM213ECA-T)	53.4
10	U40 (ICTS2PCIE412)	50.8°C
11	U41 (TSI383)	57.8°C

12	L8 (LLC3.3UH/0705C)	50.1°C
13	LC1 (LLC3.3UH/063T)	55.5°C
14	Q14 (TREL1117LG)	56.7°C
15	Q46 (TRE1085)	56.1°C
16	Q62 (TRE1085)	50.7°C





4. Reliability Test

4.1 Power Consumption Test

1. Test Environment:

Motherboard	HS-773+CBP-5P4
CPU	Intel® Core™ i7-2710QE 2.10GHz
Memory	A-DATA DDR3 1600 4GB*2 (J2108BCSE-GN-F)
HDD	Western Digital WD10EALX-009BA0 1.0TB

Power Supply : HIGH POWER HPC-250-101 A/OEM

Voltage	MS-DOS Boot up		Windows XP SP2 64-bit 3DMARK 2003 +PRIME95	
	Current (A)	Power (W)	Current (A)	Power (W)
12V	3.54	42.48	6.18	74.16
5V	3.29	16.45	4.35	21.75
3.3V	0.3	0.99	0.01	0.033
5VSB	0.337	1.685	0.007	0.035

1.a.Test Environment:

The same as above but with LCD panel

Display Panel	AUO M170EG01 17”LCD
---------------	---------------------

Power Supply : HIGH POWER HPC-250-101 A/OEM

Voltage	MS-DOS Boot up		Windows XP SP2 64-bit 3DMARK 2003 +PRIME95	
	Current (A)	Power (W)	Current (A)	Power (W)
12V	4.22	50.64	8.05	96.6
5V	3.75	18.75	5.06	25.3
3.3V	0.3	0.99	0.01	0.033
5VSB	0.336	1.68	0.005	0.025

2.Test Environment:

Motherboard	HS-773+CBP-5P4
CPU	Genuine Intel® CPU 0 2.20GHz
Memory	A-DATA DDR3 1600 4GB*2 (J2108BCSE-GN-F)
HDD	Western Digital WD10EALX-009BA0 1.0TB

Power Supply : HIGH POWER HPC-250-101 A/OEM

Voltage	MS-DOS Boot up		Windows XP SP2 64-bit 3DMARK 2003 +PRIME95	
	Current (A)	Power (W)	Current (A)	Power (W)
12V	3.47	41.64	3.75	45
5V	3.16	15.8	4.36	21.8
3.3V	0.29	0.957	0.01	0.033
5VSB	0.311	1.555	0.004	0.02

2.a.Test Environment:

The same as above but with LCD panel

Display Panel	AUO M170EG01 17"LCD
---------------	---------------------

Power Supply : HIGH POWER HPC-250-101 A/OEM

Voltage	MS-DOS Boot up		Windows XP SP2 64-bit 3DMARK 2003 +PRIME95	
	Current (A)	Power (W)	Current (A)	Power (W)
12V	3.48	41.76	5.44	65.28
5V	3.81	19.05	5.15	25.75
3.3V	0.3	0.99	0.01	0.033
5VSB	0.285	1.425	0.002	0.01

3.Test Environment:

Motherboard	HS-773+CBP-5P4
CPU	Intel(R) Celeron(R) CPU B810 1.60GHz
Memory	A-DATA DDR3 1600 4GB*2 (J2108BCSE-GN-F)
HDD	Western Digital WD10EALX-009BA0 1.0TB

Power Supply : HIGH POWER HPC-250-101 A/OEM

Voltage	MS-DOS Boot up		Windows XP SP2 64-bit 3DMARK 2003 +PRIME95	
	Current (A)	Power (W)	Current (A)	Power (W)
12V	2.71	32.52	2.85	34.2
5V	3.23	16.15	4.13	20.65
3.3V	0.34	1.122	0.01	0.033
5VSB	0.342	1.71	0.039	0.195

3.a.Test Environment:

The same as above but with LCD panel

Display Panel	AUO M170EG01 17”LCD
---------------	---------------------

Power Supply : HIGH POWER HPC-250-101 A/OEM

Voltage	MS-DOS Boot up		Windows XP SP2 64-bit 3DMARK 2003 +PRIME95	
	Current (A)	Power (W)	Current (A)	Current (A)
12V	4.3	51.6	5.97	71.64
5V	4.12	20.6	5.4	27
3.3V	0.35	1.155	0.01	0.033
5VSB	0.353	1.765	0.19	0.95

4.Test Environment:

Motherboard	HS-773+CBP-5P4
CPU	Intel® Core™ i7-2710QE 2.10GHz
Memory	Kingston DDR3 1333 4GB*2 (D2568JENC PGD9U)
HDD	Western Digital WD10EALX-009BA0 1.0TB

Power Supply : HIGH POWER HPC-250-101 A/OEM

Voltage	MS-DOS Boot up		Windows XP SP2 64-bit 3DMARK 2003 +PRIME95	
	Current (A)	Power (W)	Current (A)	Power (W)
12V	3.54	42.48	6.69	80.28
5V	3.23	16.15	4.45	22.25
3.3V	0.31	1.023	0.01	0.033
5VSB	0.305	1.525	0	0

4.a.Test Environment:

The same as above but with LCD panel

Display Panel	AUO M170EG01 17"LCD
---------------	---------------------

Power Supply : HIGH POWER HPC-250-101 A/OEM

Voltage	MS-DOS Boot up		Windows XP SP2 64-bit 3DMARK 2003 +PRIME95	
	Current (A)	Power (W)	Current (A)	Power (W)
12V	4.18	50.16	8.5	102
5V	3.78	18.9	5.08	25.4
3.3V	0.3	0.99	0.03	0.099
5VSB	0.289	1.445	0.004	0.02

5.Test Environment:

Motherboard	HS-773+CBP-5P4
CPU	Intel(R) Celeron(R) CPU B810 1.60GHz
Memory	Kingston DDR3 1333 4GB*2 (D2568JENC PGD9U)
HDD	Western Digital WD10EALX-009BA0 1.0TB

Power Supply : HIGH POWER HPC-250-101 A/OEM

Voltage	MS-DOS Boot up		Windows XP SP2 64-bit 3DMARK 2003 +PRIME95	
	Current (A)	Power (W)	Current (A)	Power (W)
12V	2.66	31.92	2.35	28.2
5V	2.95	14.75	3.9	19.5
3.3V	0.3	0.99	0.01	0.033
5VSB	0.31	1.55	0.003	0.015

5.a.Test Environment:

The same as above but with LCD panel

Display Panel	AUO M170EG01 17”LCD
---------------	---------------------

Power Supply : HIGH POWER HPC-250-101 A/OEM

Voltage	MS-DOS Boot up		Windows XP SP2 64-bit 3DMARK 2003 +PRIME95	
	Current (A)	Power (W)	Current (A)	Power (W)
12V	2.88	34.56	3.88	46.56
5V	3.56	17.8	4.53	22.65
3.3V	0.29	0.957	0.02	0.066
5VSB	0.311	1.555	0.005	0.025

6.Test Environment:

Motherboard	HS-773+CBP-5P4
CPU	Intel® Core™ i3-2330E 2.20GHz
Memory	Kingston DDR3 1333 4GB*2 (D2568JENC PGD9U)
HDD	Western Digital WD10EALX-009BA0 1.0TB

Power Supply : SWITCHING POWER SUPPLY MC-B350ATX

Voltage	MS-DOS Boot up		Windows XP SP2 64-bit 3DMARK 2003 +PRIME95	
	Current (A)	Power (W)	Current (A)	Power (W)
12V	4.19	50.28	4.44	53.28
5V	3.31	16.55	4.64	23.2
3.3V	0.34	1.122	0.01	0.033
5VSB	0.347	1.735	0.078	0.39

6.a.Test Environment:

The same as above but with LCD panel

Display Panel	AUO M170EG01 17"LCD
---------------	---------------------

Power Supply : SWITCHING POWER SUPPLY MC-B350ATX

Voltage	MS-DOS Boot up		Windows XP SP2 64-bit 3DMARK 2003 +PRIME95	
	Current (A)	Power (W)	Current (A)	Power (W)
12V	4.03	48.36	5.39	64.68
5V	4.06	20.3	5.51	27.55
3.3V	0.34	1.122	0.01	0.033
5VSB	0.36	1.8	0.206	1.03

7.Test Environment:

Motherboard	HS-773+CBP-5P4
CPU	Intel® Core™ i5-2510M 2.50GHz
Memory	A-DATA DDR3 1600 4GB*2 (J2108BCSE-GN-F)
HDD	Western Digital WD10EALX-009BA0 1.0TB

Power Supply : SWITCHING POWER SUPPLY MC-B350ATX

Voltage	MS-DOS Boot up		Windows XP SP2 64-bit 3DMARK 2003 +PRIME95	
	Current (A)	Power (W)	Current (A)	Power (W)
12V	2.81	33.72	4.57	54.84
5V	3.28	16.4	4.8	24
3.3V	0.34	1.122	0.01	0.033
5VSB	0.351	1.755	0.123	0.615

7.a.Test Environment:

The same as above but with LCD panel

Display Panel	AUO M170EG01 17”LCD
---------------	---------------------

Power Supply : SWITCHING POWER SUPPLY MC-B350ATX

Voltage	MS-DOS Boot up		Windows XP SP2 64-bit 3DMARK 2003 +PRIME95	
	Current (A)	Power (W)	Current (A)	Power (W)
12V	3.68	44.16	6.2	74.4
5V	3.97	19.85	5.46	27.3
3.3V	0.34	1.122	0.01	0.033
5VSB	0.349	1.745	0.163	0.815

8.Test Environment:

Motherboard	HS-773+CBP-5P4
CPU	Intel® Core™ i5-2510M 2.50GHz
Memory	Kingston DDR3 1333 4GB*2 (D2568JENC PGD9U)
HDD	Western Digital WD10EALX-009BA0 1.0TB

Power Supply : SWITCHING POWER SUPPLY MC-B350ATX

Voltage	MS-DOS Boot up		Windows XP SP2 64-bit 3DMARK 2003 +PRIME95	
	Current (A)	Power (W)	Current (A)	Power (W)
12V	2.81	33.72	4.35	52.2
5V	3.29	16.45	4.68	23.4
3.3V	0.34	1.122	0.01	0.033
5VSB	0.355	1.775	0.095	0.475

8.a.Test Environment:

The same as above but with LCD panel

Display Panel	AUO M170EG01 17”LCD
---------------	---------------------

Power Supply : SWITCHING POWER SUPPLY MC-B350ATX

Voltage	MS-DOS Boot up		Windows XP SP2 64-bit 3DMARK 2003 +PRIME95	
	Current (A)	Power (W)	Current (A)	Power (W)
12V	3.68	44.16	5.66	67.92
5V	3.96	19.8	5.35	26.75
3.3V	0.34	1.122	0.01	0.033
5VSB	0.345	1.725	0.1	0.5

9.Test Environment:

Motherboard	HS-773+CBP-5P4
CPU	Intel® Core™ i3-2330E 2.20GHz
Memory	A-DATA DDR3 1600 4GB*2 (J2108BCSE-GN-F)
HDD	Western Digital WD10EALX-009BA0 1.0TB

Power Supply : SWITCHING POWER SUPPLY MC-B350ATX

Voltage	MS-DOS Boot up		Windows XP SP2 64-bit 3DMARK 2003 +PRIME95	
	Current (A)	Power (W)	Current (A)	Power (W)
12V	4.02	48.24	4.4	52.8
5V	3.48	17.4	4.87	24.35
3.3V	0.38	1.254	0.01	0.033
5VSB	0.357	1.785	0.173	0.865

9.a.Test Environment:

The same as above but with LCD panel

Display Panel	AUO M170EG01 17”LCD
---------------	---------------------

Power Supply : SWITCHING POWER SUPPLY MC-B350ATX

Voltage	MS-DOS Boot up		Windows XP SP2 64-bit 3DMARK 2003 +PRIME95	
	Current (A)	Power (W)	Current (A)	Power (W)
12V	3.88	46.56	5.94	71.28
5V	4.03	20.15	5.48	27.4
3.3V	0.35	1.155	0.01	0.033
5VSB	0.357	1.785	0.113	0.565

10. Test Environment:

Motherboard	HS-773+CBP-5P4
CPU	Intel® Core™ i7-2710QE 2.10GHz
Memory	Kingston DDR3 1333 8GB*2 (J4208BASE-DJ-F)
HDD	Western Digital WD10EALX-009BA0 1.0TB

Power Supply : SWITCHING POWER SUPPLY MC-B350ATX

Voltage	MS-DOS Boot up		Windows XP SP2 64-bit 3DMARK 2003 +PRIME95	
	Current (A)	Power (W)	Current (A)	Power (W)
12V	3.56	42.72	7.24	86.88
5V	3.39	16.95	4.85	24.25
3.3V	0.32	1.056	0.01	0.033
5VSB	0.362	1.81	0.07	0.35

10.a.Test Environment:

The same as above but with LCD panel

Display Panel	AUO M170EG01 17”LCD
---------------	---------------------

Power Supply : SWITCHING POWER SUPPLY MC-B350ATX

Voltage	MS-DOS Boot up		Windows XP SP2 64-bit 3DMARK 2003 +PRIME95	
	Current (A)	Power (W)	Current (A)	Power (W)
12V	3.64	43.68	8.84	106.08
5V	3.53	17.65	5.77	28.85
3.3V	0.33	1.089	0.01	0.033
5VSB	0.38	1.9	0.104	0.52

5. Performance Test

5.1 Business Win Stone 2002

Windows XP SP2

WEIGHTED SUITE	Test Environment	Result	Remark
Business Win stone2002	Intel® Core™ i7-2710QE 2.10GHz A-DATA DDR3 1600 4GB (J2108BCSE-GN-F) Western Digital WD5000AAKS-00V1A0 500GB	PASS	51.8 52.2 52.3 52.1
Business Win stone2002	Intel® Celeron™ B810 1.60GHz Kingston DDR3 1333 4GB (D2568JENCPGD9U) Western Digital WD5000AAKS-00V1A0 500GB	PASS	39.3 39.4 38.2 38.6

5.2 Business Win Stone 2004

Windows XP SP2

WEIGHTED SUITE	Test Environment	Result	Remark
Business Win stone2004	Intel® Core™ i7-2710QE 2.10GHz A-DATA DDR3 1600 4GB (J2108BCSE-GN-F) Western Digital WD5000AAKS-00V1A0 500GB	PASS	28.8 28.8 29.2 28.6
Business Win stone2004	Intel® Celeron™ B810 1.60GHz Kingston DDR3 1333 4GB (D2568JENC PGD9U) Western Digital WD5000AAKS-00V1A0 500GB	PASS	20.3 20.6 20.7 20.6

5.3 Content Creation Winstone 2004

Windows XP SP2

WEIGHTED SUITE	Test Environment	Result	Remark
Content Creation Winstone 2004	Intel® Core™ i7-2710QE 2.10GHz A-DATA DDR3 1600 4GB (J2108BCSE-GN-F) Western Digital WD5000AAKS-00V1A0 500GB	PASS	59.8 60.5 60.9 60.4
Content Creation Winstone 2004	Intel® Celeron™ B810 1.60GHz A-DATA DDR3 1066 2GB (K4B1G0846D) Western Digital WD10EALX-009BA0 1.0TB	PASS	31.8 31.5 30.2 31.6

5.4 3D MARK(2001、2003、2005)

Windows XP SP2 32-bit

WEIGHTED SUITE	Test Environment	Result	Remark
3DMARK2001 Score	Intel® Core™ i7-2710QE 2.10GHz A-DATA DDR3 1600 4GB (J2108BCSE-GN-F) Western Digital WD5000AAKS-00V1A0 500GB	PASS	15878
3DMARK2003 Score		PASS	10902
3DMARK2005 Score		PASS	5967

Windows XP SP2 64-bit

WEIGHTED SUITE	Test Environment	Result	Remark
3DMARK2001 Score	Intel® Core™ i7-2710QE 2.10GHz A-DATA DDR3 1600 4GB (J2108BCSE-GN-F) Western Digital WD5000AAKS-00V1A0 500GB	NO SUPPLY	N/A
3DMARK2003 Score		PASS	8421
3DMARK2005 Score		PASS	5792

Windows XP SP2 32-bit

WEIGHTED SUITE	Test Environment	Result	Remark
3DMARK2001 Score	Genuine Intel® CPU 2.20GHz A-DATA DDR3 1600 4GB*2 (J2108BCSE-GN-F) Western Digital WD5000AAKS-00V1A0 500GB	PASS	12058
3DMARK2003 Score		PASS	7157
3DMARK2005 Score		PASS	4724

Windows XP SP2 64-bit

WEIGHTED SUITE	Test Environment	Result	Remark
3DMARK2001 Score	Genuine Intel® CPU 2.20GHz A-DATA DDR3 1600 4GB*2 (J2108BCSE-GN-F) Western Digital WD5000AAKS-00V1A0 500GB	NO SUPPLY	N/A
3DMARK2003 Score		PASS	7134
3DMARK2005 Score		PASS	4614

Windows XP SP2 32-bit

WEIGHTED SUITE	Test Environment	Result	Remark
3DMARK2001 Score	Intel® Celeron™ B810 1.60GHz A-DATA DDR3 1066 2GB (K4B1G0846D) Western Digital WD10EALX-009BA0 1.0TB	PASS	7236
3DMARK2003 Score		PASS	3918
3DMARK2005 Score		PASS	2621

Windows XP SP2 64-bit

WEIGHTED SUITE	Test Environment	Result	Remark
3DMARK2001 Score	Intel® Celeron™ B810 1.60GHz A-DATA DDR3 1066 2GB (K4B1G0846D) Western Digital WD10EALX-009BA0 1.0TB	NO SUPPLY	N/A
3DMARK2003 Score		PASS	3465
3DMARK2005 Score		PASS	2305

5.5 3D MARK2006

Windows XP SP2 32-bit

Item	WEIGHTED SUITE	Test Environment	Result	Remark
1	3DMARK Score	Intel® Core™ i7-2710QE 2.10GHz A-DATA DDR3 1600 4GB (J2108BCSE-GN-F) Western Digital WD5000AAKS-00V1A0 500GB	PASS	4405
2	SM2.0 Score		PASS	1530
3	HDR/SM3.0 Score		PASS	1630
4	CPU Score		PASS	5074

Windows XP SP2 32-bit

Item	WEIGHTED SUITE	Test Environment	Result	Remark
1	3DMARK Score	Genuine Intel® CPU 2.20GHz A-DATA DDR3 1600 4GB*2 (J2108BCSE-GN-F) Western Digital WD5000AAKS-00V1A0 500GB	PASS	2921
2	SM2.0 Score		PASS	1113
3	HDR/SM3.0 Score		PASS	1065
4	CPU Score		PASS	1987

Windows XP SP2 32-bit

Item	WEIGHTED SUITE	Test Environment	Result	Remark
1	3DMARK Score	Intel® Celeron™ B810 1.60GHz A-DATA DDR3 1066 2GB (K4B1G0846D) Western Digital WD10EALX-009BA0 1.0TB	PASS	1646
2	SM2.0 Score		PASS	617
3	HDR/SM3.0 Score		PASS	611
4	CPU Score		PASS	1122

5.6 PC MARK2002

Test Environment
Intel® Core™ i7-2710QE 2.10GHz A-DATA DDR3 1600 4GB (J2108BCSE-GN-F) Western Digital WD5000AAKS-00V1A0 500GB

Windows XP SP2 32-bit

Item	Weighted Suite	Result	Remark
1	CPU Score	PASS	11951
2	Memory Score	PASS	47626
3	HDD Score	PASS	2512

Test Environment
Genuine Intel® CPU 2.20GHz A-DATA DDR3 1600 4GB*2 (J2108BCSE-GN-F) Western Digital WD5000AAKS-00V1A0 500GB

Windows XP SP2 32-bit

Item	Weighted Suite	Result	Remark
1	CPU Score	PASS	8815
2	Memory Score	PASS	32614
3	HDD Score	PASS	2485

5.7 PC MARK2004

Test Environment
Intel® Core™ i7-2710QE 2.10GHz A-DATA DDR3 1600 4GB (J2108BCSE-GN-F) Western Digital WD5000AAKS-00V1A0 500GB

Windows XP PS2 32-bit

Item	Weighted Suite	Result	Remark
1	PCMark Score	PASS	N/A
2	CPU Score	PASS	N/A
3	Memory Score	PASS	12069
4	Graphic Score	PASS	4583
5	HDD Score	PASS	N/A

Test Environment
Intel® Core™ i7-2710QE 2.10GHz A-DATA DDR3 1600 4GB (J2108BCSE-GN-F) Western Digital WD5000AAKS-00V1A0 500GB

Windows XP PS2 64-bit

Item	Weighted Suite	Result	Remark
1	PCMark Score	PASS	N/A
2	CPU Score	PASS	N/A
3	Memory Score	PASS	12018
4	Graphic Score	PASS	4469
5	HDD Score	PASS	N/A

Test Environment
Genuine Intel® CPU 2.20GHz A-DATA DDR3 1600 4GB*2 (J2108BCSE-GN-F) Western Digital WD5000AAKS-00V1A0 500GB

Windows XP PS2 32-bit

Item	Weighted Suite	Result	Remark
1	PCMark Score	PASS	6825
2	CPU Score	PASS	N/A
3	Memory Score	PASS	7462
4	Graphic Score	PASS	3687
5	HDD Score	PASS	N/A

Test Environment
Genuine Intel® CPU 2.20GHz A-DATA DDR3 1600 4GB*2 (J2108BCSE-GN-F) Western Digital WD5000AAKS-00V1A0 500GB

Windows XP PS2 64-bit

Item	WEIGHTED SUITE	Result	Remark
1	PCMark Score	PASS	N/A
2	CPU Score	PASS	N/A
3	Memory Score	PASS	7474
4	Graphic Score	PASS	3737
5	HDD Score	PASS	6328

Test Environment
Intel® Celeron™ B810 1.60GHz A-DATA DDR3 1066 2GB (K4B1G0846D) Western Digital WD10EALX-009BA0 1.0TB

Windows XP PS2 32-bit

Item	Weighted Suite	Result	Remark
1	PCMark Score	PASS	4306
2	CPU Score	PASS	4275
3	Memory Score	PASS	4607
4	Graphic Score	PASS	1867
5	HDD Score	PASS	7239

Test Environment
Intel® Celeron™ B810 1.60GHz A-DATA DDR3 1066 2GB (K4B1G0846D) Western Digital WD10EALX-009BA0 1.0TB

Windows XP PS2 64-bit

Item	WEIGHTED SUITE	Result	Remark
1	PCMark Score	PASS	4335
2	CPU Score	PASS	4316
3	Memory Score	PASS	4576
4	Graphic Score	PASS	1876
5	HDD Score	PASS	7546

5.8 PC MARK2005

Test Environment
Intel® Core™ i7-2710QE 2.10GHz A-DATA DDR3 1600 4GB (J2108BCSE-GN-F) Western Digital WD5000AAKS-00V1A0 500GB

Windows XP SP2 32-bit

Item	Weighted Suite	Result	Remark
1	PCMark Score	PASS	7083
2	CPU Score	PASS	10014
3	Memory Score	PASS	9265
4	Graphic Score	PASS	3888
5	HDD Score	PASS	6815

Test Environment
Intel® Core™ i7-2710QE 2.10GHz A-DATA DDR3 1600 4GB (J2108BCSE-GN-F) Western Digital WD5000AAKS-00V1A0 500GB

Windows XP SP2 64-bit

Item	Weighted Suite	Result	Remark
1	PCMark Score	PASS	7192
2	CPU Score	PASS	10000
3	Memory Score	PASS	9195
4	Graphic Score	PASS	3846
5	HDD Score	PASS	6778

Test Environment
Genuine Intel® CPU 2.20GHz A-DATA DDR3 1600 4GB*2 (J2108BCSE-GN-F) Western Digital WD5000AAKS-00V1A0 500GB

Windows XP SP2 32-bit

Item	Weighted Suite	Result	Remark
1	PCMark Score	PASS	5220
2	CPU Score	PASS	6047
3	Memory Score	PASS	6933
4	Graphic Score	PASS	3491
5	HDD Score	PASS	6900

Test Environment
Genuine Intel® CPU 2.20GHz A-DATA DDR3 1600 4GB*2 (J2108BCSE-GN-F) Western Digital WD5000AAKS-00V1A0 500GB

Windows XP SP2 64-bit

Item	Weighted Suite	Result	Remark
1	PCMark Score	PASS	5551
2	CPU Score	PASS	6099
3	Memory Score	PASS	6934
4	Graphic Score	PASS	3536
5	HDD Score	PASS	6381

Test Environment
Intel® Celeron™ B810 1.60GHz Kingston DDR3 1333 4GB*2 (D2568JENC PGD9U) Western Digital WD10EALX-009BA0 1.0TB

Windows XP SP2 32-bit

Item	Weighted Suite	Result	Remark
1	PCMark Score	PASS	4240
2	CPU Score	PASS	4495
3	Memory Score	PASS	5773
4	Graphic Score	PASS	2377
5	HDD Score	PASS	8536

Test Environment
Intel® Celeron™ B810 1.60GHz Kingston DDR3 1333 4GB*2 (D2568JENC PGD9U) Western Digital WD10EALX-009BA0 1.0TB

Windows XP SP2 64-bit

Item	Weighted Suite	Result	Remark
1	PCMark Score	PASS	4571
2	CPU Score	PASS	4492
3	Memory Score	PASS	5765
4	Graphic Score	PASS	2735
5	HDD Score	PASS	8451

Test Environment
Intel® Celeron™ B810 1.60GHz Kingston DDR3 1333 1GB (D1288JEMFPGD9U) Western Digital WD10EALX-009BA0 1.0TB

Windows XP SP2 32-bit

Item	WEIGHTED SUITE	Result	Remark
1	PCMark Score	PASS	4472
2	CPU Score	PASS	4492
3	Memory Score	PASS	5615
4	Graphic Score	PASS	2484
5	HDD Score	PASS	8452

Test Environment
Intel® Celeron™ B810 1.60GHz Kingston DDR3 1333 1GB (D1288JEMFPGD9U) Western Digital WD10EALX-009BA0 1.0TB

Windows XP SP2 64-bit

Item	Weighted Suite	Result	Remark
1	PCMark Score	PASS	4408
2	CPU Score	PASS	4485
3	Memory Score	PASS	5644
4	Graphic Score	PASS	2397
5	HDD Score	PASS	8292

Test Environment
Intel® Core™ i7-2710QE 2.10GHz A-DATA DDR3 1066 2GB (K4B1G0846D) Western Digital WD10EALX-009BA0 1.0TB

Windows XP SP2 32-bit

Item	WEIGHTED SUITE	Result	Remark
1	PCMark Score	PASS	7089
2	CPU Score	PASS	9990
3	Memory Score	PASS	7965
4	Graphic Score	PASS	3671
5	HDD Score	PASS	8588

Test Environment
Intel® Core™ i7-2710QE 2.10GHz A-DATA DDR3 1066 2GB (K4B1G0846D) Western Digital WD10EALX-009BA0 1.0TB

Windows XP SP2 64-bit

Item	Weighted Suite	Result	Remark
1	PCMark Score	PASS	7319
2	CPU Score	PASS	9976
3	Memory Score	PASS	7940
4	Graphic Score	PASS	3559
5	HDD Score	PASS	8575

Test Environment
Intel® Core™ i7-2710QE 2.10GHz A-DATA DDR3 1066 2GB (K4B1G0846D) Western Digital WD10EALX-009BA0 1.0TB

Windows XP SP2 32-bit

Item	WEIGHTED SUITE	Result	Remark
1	PCMark Score	PASS	7046
2	CPU Score	PASS	9929
3	Memory Score	PASS	7985
4	Graphic Score	PASS	3620
5	HDD Score	PASS	8485

Test Environment
Intel® Core™ i7-2710QE 2.10GHz A-DATA DDR3 1066 2GB (K4B1G0846D) Western Digital WD10EALX-009BA0 1.0TB

Windows XP SP2 64-bit

Item	Weighted Suite	Result	Remark
1	PCMark Score	PASS	7499
2	CPU Score	PASS	9976
3	Memory Score	PASS	7935
4	Graphic Score	PASS	3833
5	HDD Score	PASS	8502

Test Environment
Genuine Intel® CPU 2.20GHz A-DATA DDR3 1066 1GB (K4B1G0846D) Western Digital WD10EALX-009BA0 1.0TB

Windows XP SP2 32-bit

Item	WEIGHTED SUITE	Result	Remark
1	PCMark Score	PASS	5419
2	CPU Score	PASS	6279
3	Memory Score	PASS	6312
4	Graphic Score	PASS	3135
5	HDD Score	PASS	7948

Test Environment
Genuine Intel® CPU 2.20GHz A-DATA DDR3 1066 1GB (K4B1G0846D) Western Digital WD10EALX-009BA0 1.0TB

Windows XP SP2 64-bit

Item	Weighted Suite	Result	Remark
1	PCMark Score	PASS	5584
2	CPU Score	PASS	6337
3	Memory Score	PASS	6330
4	Graphic Score	PASS	3216
5	HDD Score	PASS	6839

Test Environment
Intel® Core™ i3-2330E 2.20GHz Kingston DDR3 1333 4GB*2 (D2568JENCPGD9U) Western Digital WD10EALX-009BA0 1.0TB

Windows XP SP2 64-bit

Item	Weighted Suite	Result	Remark
1	PCMark Score	PASS	5881
2	CPU Score	PASS	6699
3	Memory Score	PASS	7552
4	Graphic Score	PASS	3978
5	HDD Score	PASS	6509

Test Environment
Intel® Core™ i5-2510M 2.50GHz Kingston DDR3 1333 4GB*2 (D2568JENCPGD9U) Western Digital WD10EALX-009BA0 1.0TB

Windows XP SP2 64-bit

Item	WEIGHTED SUITE	Result	Remark
1	PCMark Score	PASS	6804
2	CPU Score	PASS	8619
3	Memory Score	PASS	9793
4	Graphic Score	PASS	4321
5	HDD Score	PASS	6439

Test Environment
Intel® Celeron™ B810 2.30GHz Kingston DDR3 1066 4GB (K4B2G0846B-HCFB) HITACHI HTS543216L9A300 160GB

Windows XP SP2 32-bit

Item	Weighted Suite	Result	Remark
1	PCMark Score	PASS	4004
2	CPU Score	PASS	4485
3	Memory Score	PASS	5263
4	Graphic Score	PASS	2424
5	HDD Score	PASS	4311

Test Environment
Intel® Core™ i5-2510E 2.50GHz INNODISK DDR3 1333 4GB (H5TQ2G83CFR) Western Digital WD1600AAJS-00B4A0 160GB

Windows XP SP2 32-bit

Item	Weighted Suite	Result	Remark
1	PCMark Score	PASS	N/A
2	CPU Score	PASS	9051
3	Memory Score	PASS	8354
4	Graphic Score	PASS	N/A
5	HDD Score	PASS	6146

Test Environment
Intel® Core™ i7-2710QE 2.10GHz Kingston DDR3 1333 8GB (J4208BASE-DJ-F) Western Digital WD1600AAJS-00B4A0 160GB

Windows XP SP2 64-bit

Item	Weighted Suite	Result	Remark
1	PCMark Score	PASS	6771
2	CPU Score	PASS	9993
3	Memory Score	PASS	8653
4	Graphic Score	PASS	4028
5	HDD Score	PASS	6335

Test Environment
Intel® Core™ i7-2710QE 2.10GHz INNODISK DDR3 1333 2GB (H5TQ2G83CFR) Western Digital WD10EALX-09BA0 1.0TB

Windows XP SP2 64-bit

Item	Weighted Suite	Result	Remark
1	PCMark Score	PASS	473
2	CPU Score	PASS	9823
3	Memory Score	PASS	8612
4	Graphic Score	PASS	4083
5	HDD Score	PASS	7909

5.9 Storage Performance

5.9.1 HDD

Test environment:

OS Windows XP professional SP2

Program (HD Tune)

HDD Model	Interface	Capacity	Average	Burst Rate	Access time
Western Digital WD10EALX-009BA0	SATA	1.0 TB	98.8 MB/sec	83.8 MB/sec	13.0 ms
Western Digital WD5000AAKX-001CA0	SATA	500 GB	98.4 MB/sec	104.2 MB/sec	15.7 ms
Western Digital WD3200AAJS-00YZCA0	SATA	320 GB	84.7 MB/sec	88.3 MB/sec	15.3 ms
TDK LoR Trans-It Drive	USB	4 GB	17.5 MB/sec	15.6 MB/sec	1.1 ms
Apacer USB FLASH DRIVE	USB	515 MB	9.0 MB/sec	8.1 MB/sec	2.0 ms

5.9.2 DVD-ROM

Test environment:

OS Windows XP professional SP2

Program (NERO)

CD-ROM Model	Interface	Average Speed	Full Read	Burst Rate	CD
LG DVD GH20NS15	SATA	34.96 x	166 ms	33 MB/s	52 X CD-R
PIONEER DVD DVR-S19LBK	SATA	29.29 x	166 ms	49 MB/s	52 X CD-R
PIONEER DVD DVR-212BK	SATA	30.04 x	195 ms	40 MB/s	52 X CD-R
LITEON DVD eTAU108	USB	17.65 x	263 ms	17 MB/s	52X CD-R

5.10 Vibration Test

Motherboard	HS-773			
Test Equipment	VS-5060L			
Amplitude	Degree	Frequency	Time (1min/1Time)	Result
0.75mm	40°C	5 → 55 → 5 Hz	10	PASS
1.00mm	55°C	5 → 55 → 5 Hz	10	PASS
1.25mm	70°C	5 → 55 → 5 Hz	10	PASS
1.5mm	90°C	5 → 55 → 5 Hz	10	PASS
1.5mm	90°C	5 → 55 → 5 Hz	120	PASS