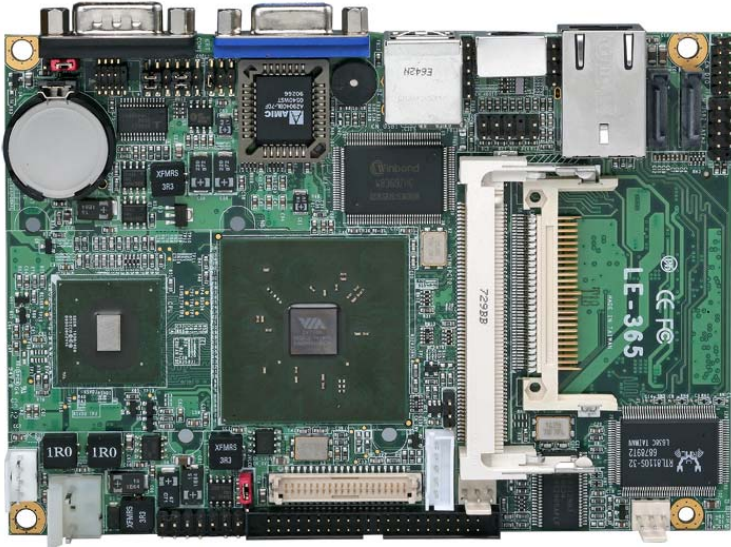


**LE-365**

**Test Report**

**Edition 1.01**

**2007/07/04**



Identify:

Test Engineer: Les

# Index

Index .....	2
1. Function test .....	4
1.1 Hardware function .....	4
1.2 BIOS function .....	6
1.3 Driver .....	8
2. Compatibility test.....	9
2.1 Memory Test.....	9
2.2 VGA Graphic Test.....	10
2.3 Audio Test.....	11
2.4 HDD Test .....	12
2.5 CD-ROM Test .....	13
2.6 USB Test .....	14
2.7 Serial Port Test.....	15
2.8 Keyboard 、 Mouse Test.....	16
2.9 LAN Test.....	17
2.10 Power Supply Test.....	18
2.11 Boot Up Test.....	19
2.12 Os Install .....	20
3. Environmental test.....	20
3.1 Temperature Test.....	20
4. Reliability Test.....	22
4.1 Power Consumption Test .....	22
4.2 Thermal measurements at various points on the board.....	24
5. Performance Test.....	25
5.1-1 WinBench 99 Version 1.1.....	25
5.1-2 WinBench 99 Version 1.2.....	27
5.2 Content Creation Winstone .....	28

5.3 3D MARK .....	29
5.4 PC MARK2002.....	30
5.5 PC MARK2004.....	31

# 1. Function test

## 1.1 Hardware function

### Base Function Test

1	Power Button	Pass
2	Reset	Pass
3	Power LED	Pass
4	HDD LED	Pass
5	IDE	Pass
6	COM1 Port	Pass
7	CN_COM2	Pass
8	DDRII SODIMM	Pass
9	CRT Port	Pass
10	Keyboard	Pass
11	Mouse	Pass
12	CN_AUDIO	Pass
13	LAN Port	Pass
14	USB Port	Pass
15	CN_USB	Pass
16	SATA1/2	Pass
17	CPUFAN	Pass
18	SYSFAN	Pass
19	CD_IN	Pass
20	CF	Pass

21	MIN PCI1	Pass
22	MIN PCI2	Pass
23	CN_IR	Pass
24	CN_DIO	Pass
25	LVDS	Pass
26	DVI	Pass
27	TV	Pass
28	HDTV	Pass
29	DC_IN	Pass
30	DC_OUT	Pass

## 2.0 PITCH (DIP)

1	JRTC	Pass
2	JVLCD	Pass
3	JAT	Pass
4	JCFSEL 1/2	Pass

## 1.2 BIOS function

Item	Description	Result	Remark
1	Press 'Del' to run Setup Utility	Pass	
2	Ctrl-Alt-Del – Soft-Reboot	Pass	
3	Save & Exit Setup	Pass	
4	Date & Time Setting	Pass	
5	Hard Disk Boot Priority	Pass	
6	Quick Power On Self Test	Pass	
7	On Chip Frame Buffer Size	Pass	
8	Boot Display	Pass	
9	On Chip Primary IDE	Pass	
10	On Chip Serial ATA	Pass	
11	USB 1.1 Controller	Pass	
12	USB 2.0 Controller	Pass	
13	USB Keyboard Support	Pass	
14	USB Mouse Support	Pass	
15	HD Audio	Pass	
16	Onboard LAN Controller	Pass	
17	Ac loss auto restart	Pass	
18	Watch Dog Timer Select	Pass	

19	ACPI Function	Pass	
20	ACPI Suspend Type	Pass	
21	Soft-Off by PWRBTN	Pass	
22	Resume by Alarm	Pass	
23	CPU Warning Temperature	Pass	
24	CPU Shutdown Temperature	Pass	
25	Onboard Lan Boot ROM	Pass	
26	POWER ON Function	Pass	
27	Power on by ring	Pass	

## 1.3 Driver

### 1. Windows XP chi Driver Test

Item	Description	Result	Remark
1	Chipset Driver	Pass	
2	VGA Driver	Pass	
3	Audio Driver	Pass	
4	LAN Driver	Pass	

### 2. Windows XP eng Driver Test

Item	Description	Result	Remark
1	Chipset Driver	Pass	
2	VGA Driver	Pass	
3	Audio Driver	Pass	
4	LAN Driver	Pass	

### 3. Windows Sever 2003 Driver Test

Item	Description	Result	Remark
1	Chipset Driver	Pass	
2	VGA Driver	Pass	
3	Audio Driver	Pass	
4	LAN Driver	Pass	

### 4. Windows Vista 32bit Driver Test

Item	Description	Result	Remark
1	Chipset Driver	Pass	
2	VGA Driver	Pass	
3	Audio Driver	Pass	
4	LAN Driver	Pass	



## 2. Compatibility test

### 2.1 Memory Test

<b>DDR2 SO-DIMM SDRAM</b>	<b>DDR2 Freq</b>	<b>Capacity Mbytes</b>	<b>Operating System</b>	<b>Result</b>
Kingston (HY5PS12821B)	DDR2 533	1GB	Win XP chi Win XP eng Win Server 2003 Win Vista	PASS
GREENCOM (E5108AE-6E-E)	DDR2 533	512MB	Win XP chi Win XP eng Win Server 2003 Win Vista	PASS
AMOS (AD2536408-5)	DDR2 533	1GB	Win XP chi Win XP eng Win Server 2003 Win Vista	PASS
DSL (E5116AF-5C-E)	DDR2 533	256MB	Win XP chi Win XP eng Win Server 2003 Win Vista	PASS

## 2.2 VGA Graphic Test

### 1. Windows XP chi

Item	Description	Result	Remark
1	Resolution/Color Change	Pass	
2	CRT Display Test	Pass	
3	CRT Display Quality Test	Pass	
4	LVDS Display Test	Pass	
5	DVI Display Test	Pass	
6	TV Display Test	Pass	
7	HDTV Display Test	Pass	

### 2. Windows XP eng

Item	Description	Result	Remark
1	Resolution/Color Change	Pass	
2	CRT Display Test	Pass	
3	CRT Display Quality Test	Pass	
4	LVDS Display Test	Pass	
5	DVI Display Test	Pass	
6	TV Display Test	Pass	
7	HDTV Display Test	Pass	

### 3. Windows Sever 2003

Item	Description	Result	Remark
1	Resolution/Color Change	Pass	
2	CRT Display Test	Pass	

3	CRT Display Quality Test	Pass	
4	LVDS Display Test	Pass	
5	DVI Display Test	Pass	
6	TV Display Test	Pass	
7	HDTV Display Test	Pass	

#### 4. Windows Vista 32bit

Item	Description	Result	Remark
1	Resolution/Color Change	Pass	
2	CRT Display Test	Pass	
3	CRT Display Quality Test	Pass	
4	LVDS Display Test	Pass	
5	DVI Display Test	Pass	
6	TV Display Test	Pass	
7	HDTV Display Test	Pass	

## 2.3 Audio Test

### 1. Windows XP chi

Item	Description	Result	Remark
1	Sound Effect	Pass	
2	Equalizer	Pass	
3	Microphone	Pass	

## 2. Windows XP eng

Item	Description	Result	Remark
1	Sound Effect	Pass	
2	Equalizer	Pass	
3	Microphone	Pass	

## 3. Windows Sever 2003

Item	Description	Result	Remark
1	Sound Effect	Pass	
2	Equalizer	Pass	
3	Microphone	Pass	

## 4. Windows Vista 32bit

Item	Description	Result	Remark
1	Sound Effect	Pass	
2	Equalizer	Pass	
3	Microphone	Pass	

## 2.4 HDD Test

HDD Type	Operating System	HDD Size Detect	HDD Data Transfer	HDD LED Check
<b>HITACHI IC25N040ATMR04-0 40GB (IDE)</b>	MS-DOS Win 2003	PASS	PASS	PASS

<b>Seagate Barracuda 7200.10 250GB (Serial ATA)</b>	Win Xp eng Win XP chi Win Vista 32bit	PASS	PASS	PASS
<b>Maxtor 4A160J0 160GB</b>		PASS	PASS	PASS
<b>WD1600JS-00MHB0 160.0GB (Serial ATA)</b>		PASS	PASS	PASS
<b>WD2500JB-00REA0 250.0GB</b>		PASS	PASS	PASS

## 2.5 CD-ROM Test

<b>CD-ROM Type</b>	<b>Operating System</b>	<b>CD-ROM Detect</b>	<b>CD-ROM Data Transfer</b>	<b>PLAY DVD</b>
<b>SYNNEX COM-5216</b>	MS-DOS Win Xp eng Win XP chi WinSever2003 Win Vista 32bit	PASS	PASS	PASS
<b>LITEON SOSC-2485KX</b>		PASS	PASS	PASS
<b>4KUS COB-6V5216</b>		PASS	PASS	PASS

<b>BenQ CD652T</b>		PASS	PASS	
<b>ASUS CD-S400/A</b>		PASS	PASS	

## 2.6 USB Test

### 1. Windows XP chi

Item	Description	Result	Remark
1	Device Manager Check	Pass	
2	External USB Keyboard Test	Pass	
3	External USB Mouse Test	Pass	
4	Hot plugging test	Pass	

### 2. Windows XP eng

Item	Description	Result	Remark
1	Device Manager Check	Pass	
2	External USB Keyboard Test	Pass	
3	External USB Mouse Test	Pass	
4	Hot plugging test	Pass	

### 3. Windows Sever 2003

Item	Description	Result	Remark
1	Device Manager Check	Pass	
2	External USB Keyboard Test	Pass	
3	External USB Mouse Test	Pass	
4	Hot plugging test	Pass	

### 4. Windows Vista 32bit

Item	Description	Result	Remark
1	Device Manager Check	Pass	
2	External USB Keyboard Test	Pass	
3	External USB Mouse Test	Pass	
4	Hot plugging test	Pass	

## 2.7 Serial Port Test

### 1. Windows XP chi

Item	Description	Result	Remark
1	Device Manager Check	Pass	
2	RS-232 Mouse Test	Pass	
3	RS-232 Modem Test	Pass	

### 2. Windows XP eng

Item	Description	Result	Remark
1	Device Manager Check	Pass	
2	RS-232 Mouse Test	Pass	
3	RS-232 Modem Test	Pass	

### 3. Windows Sever 2003

Item	Description	Result	Remark
1	Device Manager Check	Pass	
2	RS-232 Mouse Test	Pass	
3	RS-232 Modem Test	Pass	

### 4. Windows Vista 32bit

Item	Description	Result	Remark
1	Device Manager Check	Pass	
2	RS-232 Mouse Test	Pass	
3	RS-232 Modem Test	Pass	

## 2.8 Keyboard 、 Mouse Test

### 1. MS-DOS

Item	Description	Result	Remark
1	Keyboard LED Status Test	Pass	
2	Keyboard Typing Test	Pass	

### 2. Windows XP chi

Item	Description	Result	Remark
1	Device Manager Check	Pass	
2	Keyboard Typing Test	Pass	
3	Mouse Detect Test	Pass	

### 3. Windows XP eng

Item	Description	Result	Remark
1	Device Manager Check	Pass	
2	Keyboard Typing Test	Pass	



3	Mouse Detect Test	Pass	
---	-------------------	------	--

#### 4. Windows Sever 2003

Item	Description	Result	Remark
1	Device Manager Check	Pass	
2	Keyboard Typing Test	Pass	
3	Mouse Detect Test	Pass	

#### 5. Windows Vista 32bit

Item	Description	Result	Remark
1	Device Manager Check	Pass	
2	Keyboard Typing Test	Pass	
3	Mouse Detect Test	Pass	

### 2.9 LAN Test

#### 1. Windows XP chi

Item	Description	Result	Remark
1	Device Manager Check	Pass	
2	Data Transfer Test	Pass	

#### 2. Windows XP eng

Item	Description	Result	Remark
1	Device Manager Check	Pass	
2	Data Transfer Test	Pass	

#### 3. Windows Sever 2003

Item	Description	Result	Remark
1	Device Manager Check	Pass	
2	Data Transfer Test	Pass	

#### 4. Windows Vista 32bit

Item	Description	Result	Remark
------	-------------	--------	--------

1	Device Manager Check	Pass	
2	Data Transfer Test	Pass	

## 2.10 Power Supply Test

### 1. MS-DOS 6.22

Item	Description	Verification	
		Result	Remark
1	Adapter	Pass	EDAC EA11202B 19V 120W
2	Adapter	Pass	FSP FSP048-10AD 12V 50W
3	Adapter	Pass	HJC HASU05F 12V 50W
4	Adapter	Pass	LI SHIN 0219B1280 12V 80W

### 2. Windows XP chi

Item	Description	Verification	
		Result	Remark
1	Adapter	Pass	EDAC EA11202B 19V 120W
2	Adapter	Pass	FSP FSP048-10AD 12V 50W
3	Adapter	Pass	HJC HASU05F 12V 50W
4	Adapter	Pass	LI SHIN 0219B1280 12V 80W

### 3. Windows XP eng

Item	Description	Verification	
		Result	Remark
1	Adapter	Pass	EDAC EA11202B 19V 120W
2	Adapter	Pass	FSP FSP048-10AD 12V 50W
3	Adapter	Pass	HJC HASU05F 12V 50W
4	Adapter	Pass	LI SHIN 0219B1280 12V 80W

#### 4. Windows Sever 2003

Item	Description	Verification	
		Result	Remark
1	Adapter	Pass	EDAC EA11202B 19V 120W
2	Adapter	Pass	FSP FSP048-10AD 12V 50W
3	Adapter	Pass	HJC HASU05F 12V 50W
4	Adapter	Pass	LI SHIN 0219B1280 12V 80W

#### 5. Windows Vista 32bit

Item	Description	Verification	
		Result	Remark
1	Adapter	Pass	EDAC EA11202B 19V 120W
2	Adapter	Pass	FSP FSP048-10AD 12V 50W
3	Adapter	Pass	HJC HASU05F 12V 50W
4	Adapter	Pass	LI SHIN 0219B1280 12V 80W

### 2.11 Boot Up Test

Item	Description	Result	Remark
1	Soft boot from HDD	Pass	
2	Soft boot from CD-ROM	Pass	
3	Reboot test with Win XP chi	Pass	
4	Reboot test with Win XP eng	Pass	
5	Reboot test with Win Server 2003	Pass	
6	Reboot test with Win Vista 32bit	Pass	

## 2.12 Os Install

Item	Description	Result	Remark
1	Windows Server 2003	Pass	
2	Windows XP chi	Pass	
3	Windows XP eng	Pass	
4	Windows Vista 32bit	Pass	

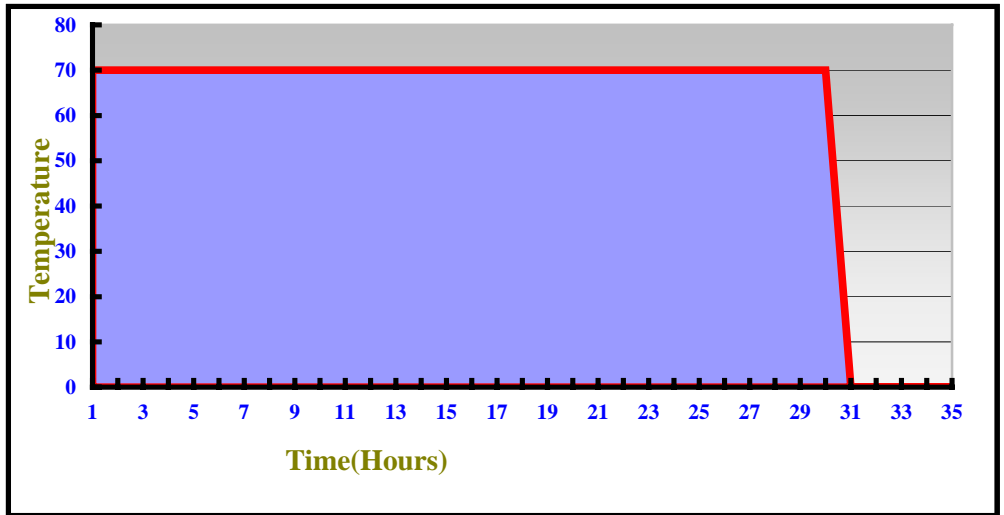
## 3. Environmental test

### 3.1 Temperature Test

#### Hardware Device list:

System Board	LE-365
CPU	VIA Eden V4 1G / 400
Memory	GREENCOM DDR2 533 512M
HDD	Seagate Barracuda 7200.10 250.0G
Operating OS	Windows XP
Test Equipment	THERMOTRON 2800 Programmer/Controller

Test Program	3Dmark 2003
--------------	-------------



**Test Result:**

**Boot Up Test:**

Temperature	Result	Remark
-10°C	Pass	Times
70°C	Pass	Times

## 4. Reliability Test

### 4.1 Power Consumption Test

#### 1. Test Environment:

Motherboard	<b>LE-365</b>
CPU	<b>VIA EDEN V4 1G/400</b>
Memory	<b>Kingston DDR2 533 1GB</b>
Power Supply	<b>EDAC EA11202B 19V 120W</b>

<b>Voltage</b>	<b>Current ( A )</b>	<b>Power ( W )</b>	<b>Remark</b>
<b>19V</b>	0.81	15.39	Boot Up

#### 2. Test Environment:

Motherboard	<b>LE-365</b>
CPU	<b>VIA EDEN V4 1G/400</b>
Memory	<b>Kingston DDR2 533 1GB</b>
Power Supply	<b>FSP FSP048-10AD 12V 50W</b>

<b>Voltage</b>	<b>Current ( A )</b>	<b>Power ( W )</b>	<b>Remark</b>
<b>12V</b>	1.16	13.92	Boot Up

#### 3. Test Environment:

Motherboard	<b>LE-365</b>
CPU	<b>VIA EDEN V4 1G/400</b>
Memory	<b>Kingston DDR2 533 1GB</b>
HDD	<b>Seagate Barracuda 7200.10 250G</b>
CD-ROM	<b>BenQ CD562T</b>
Power Supply	<b>EDAC EA11202B 19V 120W</b>
Operating System	<b>Windows XP eng</b>

Test Program	<b>3Dmark 2003</b>
--------------	--------------------

<b>Voltage</b>	<b>Current ( A )</b>	<b>Power ( W )</b>	<b>Remark</b>
<b>19V</b>	1.47	27.93	Boot Up

#### 4. Test Environment:

Motherboard	<b>LE-365</b>
CPU	<b>VIA EDEN V4 1G/400</b>
Memory	<b>Kingston DDR2 533 1GB</b>
HDD	<b>Seagate Barracuda 7200.10 250G</b>
CD-ROM	<b>BenQ CD562T</b>
Power Supply	<b>FSP FSP048-10AD 12V 50W</b>
Operating System	<b>Windows XP eng</b>
Test Program	<b>3Dmark 2003</b>

<b>Voltage</b>	<b>Current ( A )</b>	<b>Power ( W )</b>	<b>Remark</b>
<b>12V</b>	2.32	27.84	Boot Up

#### 5. Test Environment:

Motherboard	<b>LE-365</b>
CPU	<b>VIA EDEN V4 1G/400</b>
Memory	<b>Kingston DDR2 533 1GB</b>
HDD	<b>Seagate Barracuda 7200.10 250G</b>
CDROM	<b>BenQ CD562T</b>
Display	<b>SAMSUNG LTM170EU-L01</b>
Operating System	<b>Windows XP eng</b>
Test Program	<b>3Dmark 2003</b>

<b>Voltage</b>	<b>Current ( A )</b>	<b>Power ( W )</b>	<b>Remark</b>
<b>19V</b>	2.75	52.25	Boot Up

### **6.Tst Environment:**

Motherboard	<b>LE-365</b>
CPU	<b>VIA EDEN V4 1G/400</b>
Memory	<b>Kingston DDR2 533 1GB</b>
HDD	<b>Seagate Barracuda 7200.10 250G</b>
CDROM	<b>BenQ CD562T</b>
Display	<b>SAMSUNG LTM170EU-L01</b>
Operating System	<b>Windows XP eng</b>
Test Program	<b>3Dmark 2003</b>

<b>Voltage</b>	<b>Current ( A )</b>	<b>Power ( W )</b>	<b>Remark</b>
<b>12V</b>	4.23	50.76	Boot Up

## **4.2 Thermal measurements at various points on the board**

### **Test Environment :**

CPU	<b>VIA Eden V4 1G/400</b>
Memory	<b>Kingston DDR2 533 1GB</b>
HDD	<b>Seagate Barracuda 7200.10 250G</b>
DVD-ROM	<b>SYNNEX BDV316C</b>
Power	<b>FSP FSP048-10AD 12V 50W</b>
Operating System	<b>Windows XP chi</b>
Test Program	<b>3D Mark 2003</b>



## Test Result:

CPU	62.5°C
CX700M	63.8°C
U1	60.6°C
U2	69.8°C
U3	62.6°C
U7	65.8°C
U20	66.8°C
LC1	74.6°C

## 5. Performance Test

### 5.1-1 WinBench 99 Version 1.1

<b>Test Environment</b>
<b>VIA Eden v4 1G/400</b> <b>Kingston DDR2 533 1GB</b> <b>Seagate Barracuda 7200.10 250G</b>

### 1. Windows 2003

Item	WEIGHTED SUITE	Result	Remark
1	CPU mark 99	Pass	77
2	FPU WinMark	Pass	2340
3	Business Disk WinMark 99	Pass	328 Thousand Bytes/Sec
4	High-End Disk WinMark 99	Pass	10900 Thousand Bytes/Sec
5	Business Graphics WinMark 99	Pass	103
6	High-End Graphics WinMark 99	Pass	398

## 2. Windows XP Eng

<b>Item</b>	<b>WEIGHTED SUITE</b>	<b>Result</b>	<b>Remark</b>
1	CPU mark99	Pass	77.2
2	FPU WinMark	Pass	2340
3	Business Disk WinMark 99	Pass	9980 Thousand Bytes/Sec
4	High-End Disk WinMark 99	Pass	44100 Thousand Bytes/Sec
5	Business Graphics WinMark 99	Pass	258
6	High-End Graphics WinMark 99	Pass	498

## 3. Windows XP Vista 32bit

<b>Item</b>	<b>WEIGHTED SUITE</b>	<b>Result</b>	<b>Remark</b>
1	CPU mark99	Pass	76.1
2	FPU WinMark	Pass	2300
3	Business Disk WinMark 99	Pass	4350 Thousand Bytes/Sec
4	High-End Disk WinMark 99	Pass	21300 Thousand Bytes/Sec
5	Business Graphics WinMark 99	Pass	135
6	High-End Graphics WinMark 99	Pass	423

## 5.1-2 WinBench 99 Version 1.2

<b>Test Environment</b>
<b>VIA Eden v4 1G/400</b> <b>Kingston DDR2 533 1GB</b> <b>Seagate Barracuda 7200.10 250G</b>

### 1. Windows 2003

<b>Item</b>	<b>WEIGHTED SUITE</b>	<b>Result</b>	<b>Remark</b>
1	Business Disk WinMark 99	Pass	5820 Thousand Bytes/Sec
2	High-End Disk WinMark 99	Pass	11000 Thousand Bytes/Sec

### 2. Windows XP Eng

<b>Item</b>	<b>WEIGHTED SUITE</b>	<b>Result</b>	<b>Remark</b>
1	Business Disk WinMark 99	Pass	9480 Thousand Bytes/Sec
2	High-End Disk WinMark 99	Pass	44400 Thousand Bytes/Sec

### 3. Windows XP Vista 32bit

<b>Item</b>	<b>WEIGHTED SUITE</b>	<b>Result</b>	<b>Remark</b>
1	Business Disk WinMark 99	Pass	4880 Thousand Bytes/Sec
2	High-End Disk WinMark 99	Pass	25800 Thousand Bytes/Sec

## 5.2 Content Creation Winstone

### Windows XP Eng

<b>WEIGHTED SUITE</b>	<b>Test Environment</b>	<b>Result</b>	<b>Remark</b>
<b>Content Creation Winstone 2000</b>	<b>VIA Eden v4 1G/400 Kingston DDR2 533 1GB Seagate Barracuda 7200.10 250G</b>	Pass	39.2
			39.4
			39.6
			39.6
			39.7
<b>Content Creation Winstone 2001</b>	<b>VIA Eden v4 1G/400 Kingston DDR2 533 1GB Seagate Barracuda 7200.10 250G</b>	Pass	38.5
			36.9
			36.7
			36.9
			36.7

## 5.3 3D MARK

### Windows XP chi

WEIGHTED SUITE	Test Environment	Result	Remark
3DMARK2000 Scores	VIA Eden v4 1G/400 Kingston DDR2 533 1GB Seagate Barracuda 7200.10 250G BenQ CD652T	Pass	2325
3DMARK2001 Scores		Pass	975
3DMARK2003 Scores		Pass	58

### Windows Vista 32bit

WEIGHTED SUITE	Test Environment	Result	Remark
3DMARK2000 Scores	VIA Eden v4 1G/400 Kingston DDR2 533 1GB Seagate Barracuda 7200.10 250G BenQ CD652T	Pass	810

## 5.4 PC MARK2002

<b>Test Environment</b>
<b>VIA Eden v4 1G/400</b> <b>GREENCOM(E5108AE-6E-E)DDR2 533 512MB</b> <b>Seagate Barracuda 7200.10 250G</b>

### Windows XP eng

<b>Item</b>	<b>WEIGHTED SUITE</b>	<b>Result</b>	<b>Remark</b>
1	CPU test Source	Pass	1318
2	Memory test Source	Pass	1979
3	HDD test Source	Pass	1721

### Windows Sever 2003

<b>Item</b>	<b>WEIGHTED SUITE</b>	<b>Result</b>	<b>Remark</b>
1	CPU test Source	Pass	1321
2	Memory test Source	Pass	1868
3	HDD test Source	Pass	1912

### Windows XP Vista 32bit

<b>Item</b>	<b>WEIGHTED SUITE</b>	<b>Result</b>	<b>Remark</b>
1	Memory test Source	Pass	1975
2	HDD test Source	Pass	1587

## 5.5 PC MARK2004

<b>Test Environment</b>
<b>VIA Eden v4 1G/400</b> <b>GREENCOM(E5108AE-6E-E)DDR2 533 512MB</b> <b>Seagate Barracuda 7200.10 250G</b>

### Windows XP eng

<b>Item</b>	<b>WEIGHTED SUITE</b>	<b>Result</b>	<b>Remark</b>
1	Memory test Source	Pass	821
2	Graphic test Source	Pass	411

### Windows Sever 2003

<b>Item</b>	<b>WEIGHTED SUITE</b>	<b>Result</b>	<b>Remark</b>
1	Memory test Source	Pass	825
2	HDD test Source	Pass	4975

