

# Product Test Report



<b>Product Name</b>	<b>LE-379</b>
<b>Product Version</b>	<b>A</b>
<b>Issued Date</b>	<b>2014.12.10</b>
<b>Report Edition</b>	<b>1.1</b>
<b>BIOS Version</b>	<b>1.0</b>
<b>Testing Engineer</b>	<b>Perry</b>
<b>Check Engineer</b>	<b>Perry</b>

REVISION HISTORY			
DATE	REVISION NO.	PAGE	DESCRIPTONS
2013.05.07	Ver. 1.1	45	Initial Release
2014.12.10	Ver. 1.2	46	Add Vibration Test

## Index

<b>1. Function test.....</b>	<b>4</b>
1.1 Hardware function.....	4
1.2 BIOS function .....	6
1.3 Driver .....	7
<b>2. Compatibility test .....</b>	<b>8</b>
2.1 CPU Test.....	8
2.2 Operation System Test .....	8
2.3 Memory Test .....	9
2.4 VGA Graphic Quality Test.....	10
2.5 Audio .....	11
2.6 HDD Test .....	14
2.7 CD-ROM Test .....	15
2.8 USB device Test .....	16
2.9 Serial Port Test .....	19
2.10 PS2 Keyboard 、 Mouse Test.....	22
2.11 LAN Test.....	25
2.12 Power Supply Test .....	27
2.13 PCI Express mini card .....	27
<b>3. Environmental test .....</b>	<b>28</b>
3.1 Temperature Test.....	28
3.2 Thermal measurements at various points on the board .....	31

<b>4. Reliability Test .....</b>	<b>34</b>
<b>Power Consumption Test .....</b>	<b>34</b>
<b>5. Performance Test .....</b>	<b>40</b>
<b>5.1 AQUAMARK3 .....</b>	<b>40</b>
<b>5.2 ZD CPUMARK .....</b>	<b>40</b>
<b>5.3 3D MARK(2001 、 2003 、 2005) .....</b>	<b>41</b>
<b>5.4 3D MARK2006 .....</b>	<b>41</b>
<b>5.5 PC MARK2002 .....</b>	<b>42</b>
<b>5.6 PC MARK2004 .....</b>	<b>42</b>
<b>5.7 PC MARK2005 .....</b>	<b>43</b>
<b>5.8 Storage Performance .....</b>	<b>44</b>
<b>5.9 Vibration Test .....</b>	<b>46</b>

# 1. Function test

## 1.1 Hardware function

### Base Function Test

Item	Description	Result
1	Power Button	PASS
2	Reset	PASS
3	Power LED	PASS
4	HDD LED	PASS
5	VGA	PASS
6	PS2	PASS
7	SATA 1 / 2	PASS
8	DDR3	PASS
9	LAN	PASS
10	USB 1 / 2 / 3 / 4 / 5 / 6	PASS
11	COM port 1 / 2 / 3 / 4 / 5 / 6	PASS
12	CPU Fan	PASS
13	System Fan	PASS
14	CN_LVDS	PASS
15	CN_DVI	PASS
16	CN_AUDIO	PASS
17	MINI PCI	PASS
18	PCIE Mini Card	PASS
19	CN_INV	PASS
20	CN_IR	PASS
21	CN_LPT	PASS
22	CN_DIO	PASS

23	CN_LPC	PASS
----	--------	------

## Jumper

Item	Description	Result
1	JRTC	PASS
2	JAT	PASS

## 1.2 BIOS function

Item	Description	Result	Remark
1	Press 'Del' to run Setup Utility	PASS	
2	Ctrl-Alt-Del – Soft-Reboot	PASS	
3	Save & Exit Setup	PASS	
4	Date & Time Setting	PASS	
5	NumLock	PASS	
6	Select Language	PASS	
7	Quick Boot	PASS	
8	Console Redirection	PASS	
9	Active Processor Cores	PASS	
10	Interface Combination	PASS	
11	IGD-Boot Type(No include MPX-SDVOD/SDVOX)	PASS	
12	IGD-LCD Panel type	PASS	
13	USB Per-Port Disabled Control	PASS	
14	SB Azalia Config	PASS	
15	LAN OPROM Selection	PASS	
16	Wake on PCH LAN	PASS	
17	Serial Port	PASS	
18	Paraller Port	PASS	
19	Watch Dog Timer Select	PASS	
20	Power Control	PASS	
21	Power On By RTC Alarm	PASS	
22	Set Supervisor Password	PASS	
23	Set User Password	PASS	

## 1.3 Driver

### CD Edition : IPCi4-1.0

#### 1. Windows 7 32 bit Driver Test

Item	Description	Result	version
1	Chipset Driver	PASS	9.3.0.1019
2	VGA Driver	PASS	8.14.8.1065
3	Audio Driver	PASS	6.0.1.6083
4	LAN Driver	PASS	11.14.48.0

Notice:

LE-379 only support Windows 7 32-bit.

Intel does not release the VGA driver for Windows XP, Vista, Windows Server 2000/ 2003/ 2008.

## 2. Compatibility test

### 2.1 CPU Test

Test environment:

OS Windows 7 32bit

Test program : PC MARK 2005

Spec Code	CPU Speed	Family	Processor	DMI	Smart Cache	Result
<a href="#">SR0D9</a>	2.13 GHz	Atom	D2700	2.5 GT/s	1 MB	PASS
<a href="#">SR0DA</a>	1.86 GHz	Atom	N2800	2.5 GT/s	1 MB	PASS
<a href="#">SR0QB</a>	1.86 GHz	Atom	D2550	2.5 GT/s	1 MB	PASS

### 2.2 Operation System Test

Item	Description	Result	Remark
1	Windows 7 64-bit	PASS	
2	Windows 7 32-bit	PASS	
3	Windows Server 2008 64-bit	PASS	
4	Windows Server 2008 32-bit	PASS	
5	Windows Vista 64-bit	PASS	
6	Windows Vista 32-bit	PASS	
7	Windows XP SP2 64-bit	PASS	
8	Windows XP SP2 32-bit	PASS	
9	Windows Server 2003 32-bit	PASS	
10	Ubuntu	PASS	



## 2.3 Memory Test

Test environment:

OS Windows 7 32 bit

Test program : PC MARK 2005

Manufacturer	Chip	Frequency	Capacity Mbytes	Result
Transcend	K4B1G0846D	DDR3 1066	1 GB	PASS
ADATA	K4B1G0846D	DDR3 1066	1 GB	PASS
Transcend	K4B1G0846D	DDR3 1066	2 GB	PASS
Kingston	D2568JENC PGD9U	DDR3 1333	4 GB	PASS
ADATA	J2108BCSE-GN-F	DDR3 1600	4 GB	PASS

## 2.4 VGA Graphic Quality Test

Test environment:

OS Windows 7 32bit

Driver version : 8.14.8.1065

Resolution	Color	Result	Remark
800*600	16 / 32bit	PASS	
1024*768	16 / 32bit	PASS	
1152*864	16 / 32bit	PASS	
1280*600	16 / 32bit	PASS	
1280*720	16 / 32bit	PASS	
1280*768	16 / 32bit	PASS	
1280*800	16 / 32bit	PASS	
1280*960	16 / 32bit	PASS	
1280*1024	16 / 32bit	PASS	
1360*768	16 / 32bit	PASS	
1366*768	16 / 32bit	PASS	
1400*1050	16 / 32bit	PASS	
1440*900	16 / 32bit	PASS	
1600*900	16 / 32bit	PASS	
1680*1050	16 / 32bit	PASS	
1920*1080	16 / 32bit	PASS	

## 2.5 Audio

Test environment:

OS Windows XP 32 bit

Driver version : 5.10.0.6083

Item	Description	Result	Remark
1	2CH	PASS	
2	Microphone	PASS	

OS Windows XP 64 bit

Driver version : 5.10.0.6083

Item	Description	Result	Remark
1	2CH	PASS	
2	Microphone	PASS	

OS Windows SERVER 2003

Driver version : 5.10.0.6083

Item	Description	Result	Remark
1	2CH	PASS	
2	Microphone	PASS	

OS Windows Vista 32 bit

Driver version : 6.0.1.6083

Item	Description	Result	Remark
1	2CH	PASS	
2	Microphone	PASS	

**OS Windows Vista 64 bit**

**Driver version : 6.0.1.6083**

Item	Description	Result	Remark
1	2CH	PASS	
2	Microphone	PASS	

**OS Windows 7 32 bit**

**Driver version : 6.0.1.6083**

Item	Description	Result	Remark
1	2CH	PASS	
2	Microphone	PASS	

**OS Windows 7 64 bit**

**Driver version : 6.0.1.6083**

Item	Description	Result	Remark
1	2CH	PASS	
2	Microphone	PASS	

**OS Windows 2008 32 bit**

**Driver version : 6.0.1.6083**

Item	Description	Result	Remark
1	2CH	PASS	
2	Microphone	PASS	

**OS Windows 2008 64 bit**

**Driver version : 6.0.1.083**

<b>Item</b>	<b>Description</b>	<b>Result</b>	<b>Remark</b>
1	2CH	PASS	
2	Microphone	PASS	

## 2.6 HDD Test

Test environment:

OS Windows 7

Model	Interface	Capacity	Size Detect	Data Transfer
<b>Western Digital WD10EARS-00Y5B1</b>	SATA	1.0TB	PASS	PASS
<b>Western Digital WD5000AAKX-221CA0</b>	SATA	500GB	PASS	PASS
<b>Western Digital WD3200BEKT</b>	SATA	320GB	PASS	PASS
<b>Western Digital WD2500AAKS-00VYA0</b>	SATA	250GB	PASS	PASS
<b>Western Digital WD1600AAJS-00B4A0</b>	SATA	160GB	PASS	PASS
<b>Western Digital WD800BEVS-00RST0</b>	SATA	80GB	PASS	PASS
<b>MemoRjght FTM-Plus</b>	SATA	60GB	PASS	PASS

## 2.7 CD-ROM Test

Test environment:

OS Windows 7 32bit

Model	Interface	Detect	Data Transfer	Play CD
Pioneer DVR-212BK	USB	PASS	PASS	PASS
Buffalo DVSM-PC58U2V	USB	PASS	PASS	PASS
LiteOn SOSW-833SX	USB	PASS	PASS	PASS
LiteOn eTAU108	USB	PASS	PASS	PASS

## 2.8 USB device Test

### 1. Windows XP 32 bit

Item	Result	Remark
External USB Keyboard Test	PASS	
External USB Mouse Test	PASS	
Hot plugging test	PASS	
CD ROM	PASS	
USB Mass storage	PASS	

### 2. Windows XP 64 bit

Item	Result	Remark
External USB Keyboard Test	PASS	
External USB Mouse Test	PASS	
Hot plugging test	PASS	
CD ROM	PASS	
USB Mass storage	PASS	

### 3. Windows Server 2003

Item	Result	Remark
External USB Keyboard Test	PASS	
External USB Mouse Test	PASS	
Hot plugging test	PASS	
CD ROM	PASS	
USB Mass storage	PASS	



#### 4. Windows Vista 32 bit

Item	Result	Remark
External USB Keyboard Test	PASS	
External USB Mouse Test	PASS	
Hot plugging test	PASS	
CD ROM	PASS	
USB Mass storage	PASS	

#### 5. Windows Vista 64 bit

Item	Result	Remark
External USB Keyboard Test	PASS	
External USB Mouse Test	PASS	
Hot plugging test	PASS	
CD ROM	PASS	
USB Mass storage	PASS	

#### 6. Windows 7 32 bit

Item	Result	Remark
External USB Keyboard Test	PASS	
External USB Mouse Test	PASS	
Hot plugging test	PASS	
CD ROM	PASS	
USB Mass storage	PASS	

## 7. Windows 7 64 bit

Item	Result	Remark
External USB Keyboard Test	PASS	
External USB Mouse Test	PASS	
Hot plugging test	PASS	
CD ROM	PASS	
USB Mass storage	PASS	

## 8. Windows 2008 32 bit

Item	Result	Remark
External USB Keyboard Test	PASS	
External USB Mouse Test	PASS	
Hot plugging test	PASS	
CD ROM	PASS	
USB Mass storage	PASS	

## 9. Windows 2008 64 bit

Item	Result	Remark
External USB Keyboard Test	PASS	
External USB Mouse Test	PASS	
Hot plugging test	PASS	
CD ROM	PASS	
USB Mass storage	PASS	

## 2.9 Serial Port Test

### 1. MS-DOS

Item	Description	Result	Remark
1	RS-422 & RS-485	Pass	
2	PC Check	Pass	

### 2. Windows XP 32 bit

Item	Description	Result	Remark
1	Device Manager Check	PASS	
2	b&b com port test	PASS	

### 3. Windows XP 64 bit

Item	Description	Result	Remark
1	Device Manager Check	PASS	

### 4. Windows Server 2003

Item	Description	Result	Remark
1	Device Manager Check	PASS	
2	b&b com port test	PASS	

### 5. Windows Vista 32 bit

Item	Description	Result	Remark
1	Device Manager Check	PASS	
2	b&b com port test	PASS	

### 6. Windows Vista 64 bit

Item	Description	Result	Remark
1	Device Manager Check	PASS	

### 7. Windows 7 32 bit

Item	Description	Result	Remark
1	Device Manager Check	PASS	
2	b&b com port test	PASS	

### 8. Windows 7 64 bit

Item	Description	Result	Remark
1	Device Manager Check	PASS	

### 9. Windows 2008 32 bit

Item	Description	Result	Remark
1	Device Manager Check	PASS	

### 10. Windows 2008 64 bit

Item	Description	Result	Remark
1	Device Manager Check	PASS	

## 2.10 PS2 Keyboard 、 Mouse Test

### 1. MS-DOS

Item	Description	Result	Remark
1	Keyboard LED Status Test	PASS	
2	Keyboard Typing Test	PASS	
3	Mouse Detect Test	PASS	

### 2. Windows XP 32 bit

Item	Description	Result	Remark
1	Device Manager Check	PASS	
2	Keyboard Typing Test	PASS	
3	Mouse Detect Test	PASS	

### 3. Windows XP 64 bit

Item	Description	Result	Remark
1	Device Manager Check	PASS	
2	Keyboard Typing Test	PASS	
3	Mouse Detect Test	PASS	

### 4. Windows Server 2003

Item	Description	Result	Remark
1	Device Manager Check	PASS	
2	Keyboard Typing Test	PASS	
3	Mouse Detect Test	PASS	

### 5. Windows Vista 32 bit

Item	Description	Result	Remark
1	Device Manager Check	PASS	
2	Keyboard Typing Test	PASS	
3	Mouse Detect Test	PASS	

### 6. Windows Vista 64 bit

Item	Description	Result	Remark
1	Device Manager Check	PASS	
2	Keyboard Typing Test	PASS	
3	Mouse Detect Test	PASS	

### 7. Windows 7 32 bit

Item	Description	Result	Remark
1	Device Manager Check	PASS	
2	Keyboard Typing Test	PASS	
3	Mouse Detect Test	PASS	

### 8. Windows 7 64 bit

Item	Description	Result	Remark
1	Device Manager Check	PASS	
2	Keyboard Typing Test	PASS	
3	Mouse Detect Test	PASS	

### 9. Windows 2008 32 bit

Item	Description	Result	Remark
1	Device Manager Check	PASS	
2	Keyboard Typing Test	PASS	
3	Mouse Detect Test	PASS	

### 10. Windows 2008 64 bit

Item	Description	Result	Remark
1	Device Manager Check	PASS	
2	Keyboard Typing Test	PASS	
3	Mouse Detect Test	PASS	



## 2.11 LAN Test

Data Transfer Test environment:

-CAT 6 UTP 100M

-8 HR. continuous

### 1. Windows XP 32 bit

Item	Description	Result	Remark
1	Device Manager Check	PASS	
2	Data Transfer Test	PASS	

### 2. Windows XP 64 bit

Item	Description	Result	Remark
1	Device Manager Check	PASS	
2	Data Transfer Test	PASS	

### 3. Windows Server 2003

Item	Description	Result	Remark
1	Device Manager Check	PASS	
2	Data Transfer Test	PASS	

### 5. Windows Vista 32 bit

Item	Description	Result	Remark
1	Device Manager Check	PASS	
2	Data Transfer Test	PASS	

## 6. Windows Vista 64 bit

Item	Description	Result	Remark
1	Device Manager Check	PASS	
2	Data Transfer Test	PASS	

## 7. Windows 7 32 bit

Item	Description	Result	Remark
1	Device Manager Check	PASS	
2	Data Transfer Test	PASS	

## 8. Windows 7 64 bit

Item	Description	Result	Remark
1	Device Manager Check	PASS	
2	Data Transfer Test	PASS	

## 9. Windows 2008 32 bit

Item	Description	Result	Remark
1	Device Manager Check	PASS	
2	Data Transfer Test	PASS	

## 10. Windows 2008 64 bit

Item	Description	Result	Remark
1	Device Manager Check	PASS	
2	Data Transfer Test	PASS	

## 2.12 Power Supply Test

Item	TYPE	Description	Result	Remark
1	ATX Power	CWT-300ATX12 300W	PASS	
2	ATX Power	CORSAIR CMPSU-500CX V2	PASS	

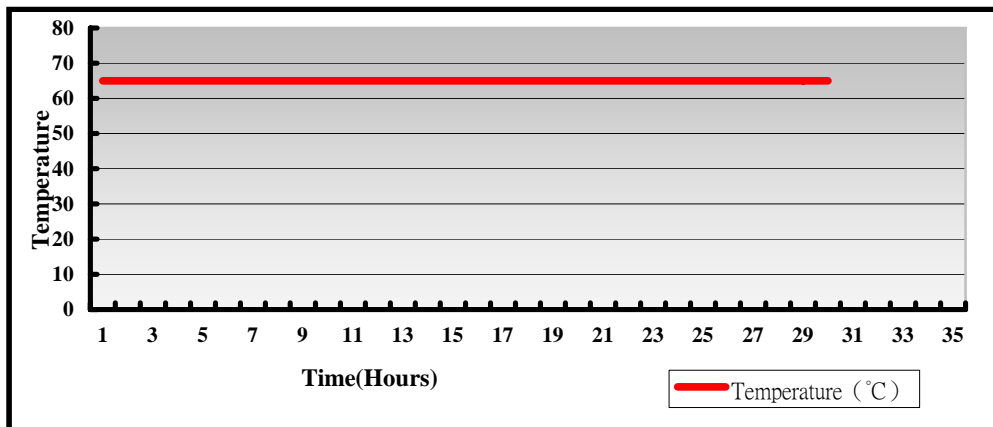
## 2.13 PCI Express mini card

Motherboard	PCI Express mini card	Remark
LE-379	MPX-954	PASS
	MPX-750	PASS
	MPX-954E	PASS
	MPX-827	PASS
	MPX-574D	PASS
	MPX-574D2	PASS
	MPX-643	PASS
	MPX-885	PASS
	MPX-3132	PASS
	MPX-9125	PASS
	MPX-7202	PASS
	MPX-6864	PASS
	MPX-TP4R	PASS
MPX-SDVOD	PASS	

### 3. Environmental test

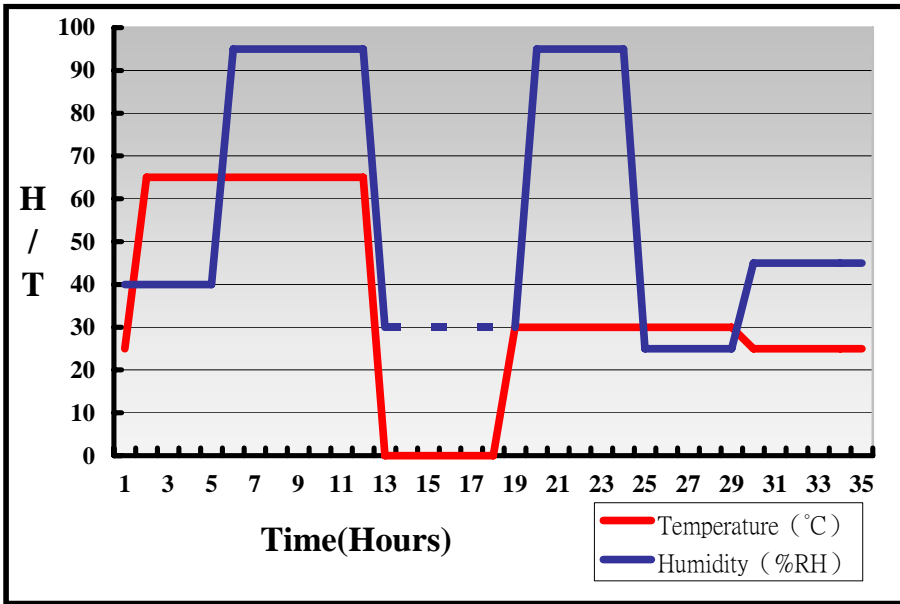
#### 3.1 Temperature Test

System Board	LE-379D5
CPU	Intel® Atom™ D2550 1.86GHz
Memory	Kingston DDR3 1333 4GB (D2568JENCPGD9U)
HDD	Western Digital WD10EARS-00Y5B1 1.0TB
Operating OS	Windows 7 32bit
Test Equipment	GIANT FORCE (GTH-150-60-CP-AR)
Test Program	3DMark 2003+Prime95



## Hardware Device list:

System Board	LE-379D5
CPU	Intel® Atom™ D2550 1.86GHz
Memory	Kingston DDR3 1333 4GB (D2568JENC PGD9U)
HDD	Western Digital WD10EARS-00Y5B1 1.0TB
Operating OS	Windows 7 32bit
Test Equipment	GIANT FORCE (GTH-150-60-CP-AR)
Test Program	3DMark 2003



**Definition :** When the temperature is 30 degrees below arrive, humidity measurements have not, so by the dashed line express.

## Boot Up Test:

### Hardware Device list:

<b>System Board</b>	<b>LE-379D5</b>
<b>CPU</b>	<b>Intel® Atom™ D2550 1.86GHz</b>
<b>Memory</b>	<b>Kingston DDR3 1333 4GB (D2568JENC PGD9U)</b>

<b>Temperature</b>	<b>Result</b>	<b>Remark</b>
<b>0°C</b>	<b>PASS</b>	<b>50 Times</b>
<b>65°C</b>	<b>PASS</b>	<b>50 Times</b>

## 3.2 Thermal measurements at various points on the board

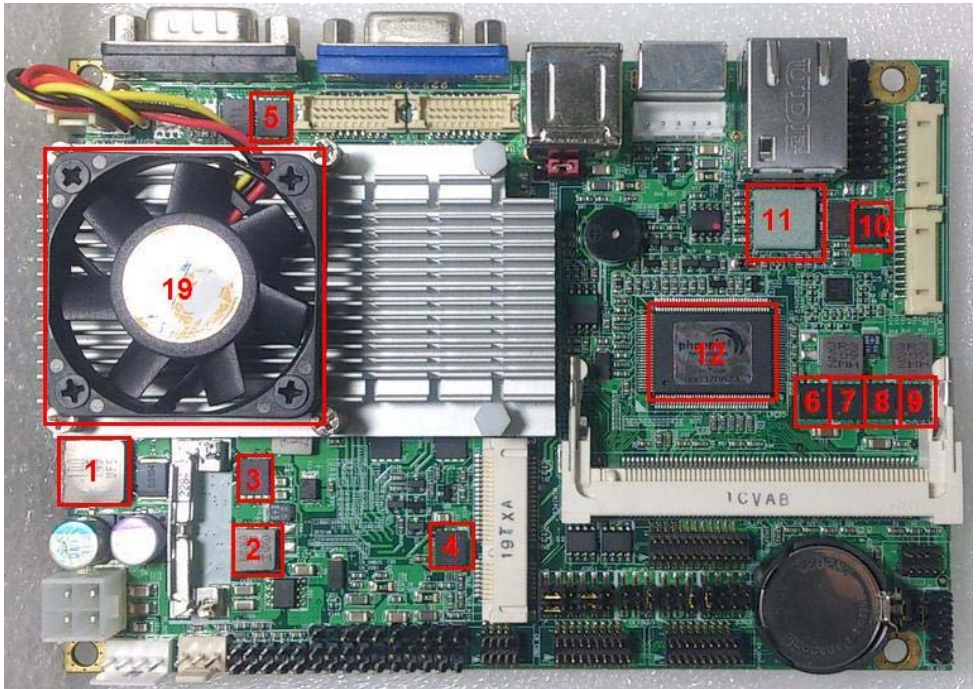
### Test Environment :

<b>CPU</b>	Intel® Atom™ D2550 1.86GHz
<b>Memory</b>	Kingston DDR3 1333 4GB (D2568JENCPCGD9U)
<b>HDD</b>	Western Digital Caviar Green 1.0TB (WD10EARS)
<b>Power</b>	Channel Well CWT-300ATX12 (300W)
<b>Operating System</b>	Windows 7 32bit
<b>Test Program</b>	3DMark2003+Prime95

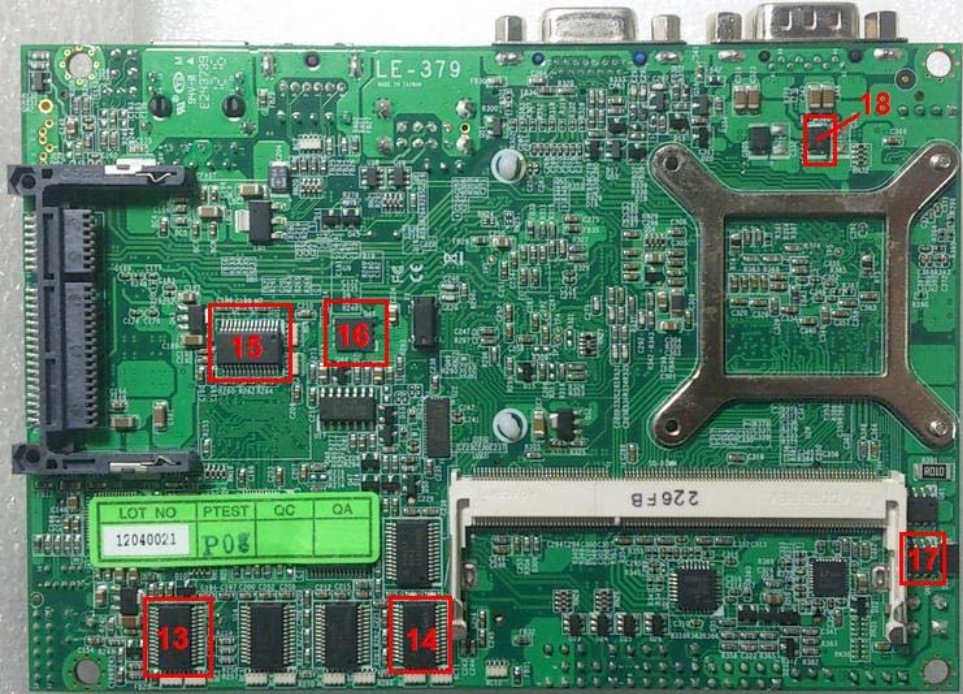
### Test Result:

Item	Environmental temperature	
1	LC3	41
2	L2	49.4
3	Q33	47.4
4	Q18	42.1
5	Q32	37.3
6	Q7	37.8
7	Q6	38.3
8	Q4	38.7
9	Q3	38.5
10	Q5	33.2
11	U2	32.7

12	Lpcio	35.4
13	U10	38.6
14	U21	36.7
15	U12	35.8
16	Q46	34.6
17	Q60	41.5
18	C344	36.0
19	CPU	40.3







## 4. Reliability Test

### Power Consumption Test

#### 1. Test Environment:

<b>Motherboard</b>	LE-379D5
<b>CPU</b>	Intel® Atom D2550 1.86GHz
<b>Memory</b>	Adata DDR3 1066 1G (SC7YG1A087AZ)

#### (A) Power Supply: CWT-300ATX12

Voltage	MS-DOS Boot up		Windows7 Prime95-272 + 3DMarks2003	
	Current ( A )	Power ( W )	Current ( A )	Power ( W )
<b>12V</b>	1.34	16.08	1.76	21.12

#### 1.a. Test Environment:

The same as above but with LCD panel

<b>Display Panel</b>	AUO PC-GF10FR(G084SN05)
----------------------	-------------------------

#### (A) Power Supply: CWT-300ATX12

Voltage	MS-DOS Boot up		Windows 7 Prime95-272 + 3DMarks2003	
	Current ( A )	Power ( W )	Current ( A )	Power ( W )
<b>12V</b>	2.03	24.36	2.42	29.04

## 2.Test Environment:

<b>Motherboard</b>	LE-379D5
<b>CPU</b>	Intel® Atom D2550 1.86GHz
<b>Memory</b>	Transcend DDR3 1066 2G (K4B1G0846D)

### (A) Power Supply: CWT-300ATX12

Voltage	MS-DOS Boot up		Windows7 Prime95-272 + 3DMarks2003	
	Current ( A )	Power ( W )	Current ( A )	Power ( W )
<b>12V</b>	1.37	16.44	1.83	21.96

## 2.a.Test Environment:

The same as above but with LCD panel

<b>Display Panel</b>	AUO PC-GF10FR(G084SN05)
----------------------	-------------------------

### (A) Power Supply: CWT-300ATX12

Voltage	MS-DOS Boot up		Windows 7 Prime95-272 + 3DMarks2003	
	Current ( A )	Power ( W )	Current ( A )	Power ( W )
<b>12V</b>	2.03	24.36	2.49	29.88

### 3.Test Environment:

<b>Motherboard</b>	LE-379D5
<b>CPU</b>	Intel® Atom D2550 1.86GHz
<b>Memory</b>	Kingston DDR3 1333 4G (RJL5Y-L93CTJ-3WEKF)

#### (A) Power Supply: CWT-300ATX12

Voltage	MS-DOS Boot up		Windows7 Prime95-272 + 3DMarks2003	
	Current ( A )	Power ( W )	Current ( A )	Power ( W )
<b>12V</b>	1.35	16.20	1.72	20.64

### 3.a.Test Environment:

The same as above but with LCD panel

<b>Display Panel</b>	AUO PC-GF10FR(G084SN05)
----------------------	-------------------------

#### (A) Power Supply: CWT-300ATX12

Voltage	MS-DOS Boot up		Windows 7 Prime95-272 + 3DMarks2003	
	Current ( A )	Power ( W )	Current ( A )	Power ( W )
<b>12V</b>	2.00	24.00	2.38	28.56

#### 4. Test Environment:

<b>Motherboard</b>	LE-379N
<b>CPU</b>	Intel® Atom N2800 1.86GHz
<b>Memory</b>	Adata DDR3 1066 1G (SC7YG1A087AZ)

#### (A) Power Supply: CWT-300ATX12

Voltage	MS-DOS Boot up		Windows7 Prime95-272 + 3DMarks2003	
	Current ( A )	Power ( W )	Current ( A )	Power ( W )
12V	1.34	16.08	1.69	20.28

#### 4.a. Test Environment:

The same as above but with LCD panel

<b>Display Panel</b>	AUO PC-GF10FR(G084SN05)
----------------------	-------------------------

#### (A) Power Supply: CWT-300ATX12

Voltage	MS-DOS Boot up		Windows 7 Prime95-272 + 3DMarks2003	
	Current ( A )	Power ( W )	Current ( A )	Power ( W )
12V	1.89	22.68	2.22	26.64

## 5.Test Environment:

<b>Motherboard</b>	LE-379N
<b>CPU</b>	Intel® Atom N2800 1.86GHz
<b>Memory</b>	Transcend DDR3 1066 2G (K4B1G0846D)

### (A) Power Supply: CWT-300ATX12

Voltage	MS-DOS Boot up		Windows7 Prime95-272 + 3DMarks2003	
	Current ( A )	Power ( W )	Current ( A )	Power ( W )
<b>12V</b>	1.33	15.96	1.60	19.20

## 5.a.Test Environment:

The same as above but with LCD panel

<b>Display Panel</b>	AUO PC-GF10FR(G084SN05)
----------------------	-------------------------

### (A) Power Supply: CWT-300ATX12

Voltage	MS-DOS Boot up		Windows 7 Prime95-272 + 3DMarks2003	
	Current ( A )	Power ( W )	Current ( A )	Power ( W )
<b>12V</b>	2.04	24.48	2.29	27.48

## 6.Test Environment:

<b>Motherboard</b>	LE-379N
<b>CPU</b>	Intel® Atom N2800 1.86GHz
<b>Memory</b>	Kingston DDR3 1333 4G(RJL5Y-L93CTJ-3WEKF)

### (A) Power Supply: CWT-300ATX12

Voltage	MS-DOS Boot up		Windows7 Prime95-272 + 3DMarks2003	
	Current ( A )	Power ( W )	Current ( A )	Power ( W )
<b>12V</b>	1.24	14.88	1.54	18.48

## 6.a.Test Environment:

The same as above but with LCD panel

<b>Display Panel</b>	AUO PC-GF10FR(G084SN05)
----------------------	-------------------------

### (A) Power Supply: CWT-300ATX12

Voltage	MS-DOS Boot up		Windows 7 Prime95-272 + 3DMarks2003	
	Current ( A )	Power ( W )	Current ( A )	Power ( W )
<b>12V</b>	1.86	22.32	2.16	25.92

## 5. Performance Test

### 5.1 AQUAMARK3

<b>Test Environment</b>
<b>Intel® Atom™ D2550 1.86GHz</b> <b>Kingston DDR3 1333 4G(RJL5Y-L93CTJ-3WEKF)</b> <b>Western Digital 1.0TB(WD10EARS)</b>

Windows 7 32bit

Item	WEIGHTED SUITE	Result	Remark
1	GFX	Pass	1146
2	CPU	Pass	4440
3	AquaMark3 TRISCORE	Pass	10161

### 5.2 ZD CPUMARK

<b>Test Environment</b>
<b>Intel® Atom™ D2550 1.86GHz</b> <b>Kingston DDR3 1333 4G(RJL5Y-L93CTJ-3WEKF)</b> <b>Western Digital 1.0TB(WD10EARS)</b>

Windows 7 32bit

Item	WEIGHTED SUITE	Result	Remark
1	SCORE	Pass	133



### 5.3 3D MARK(2001 、 2003 、 2005)

Windows 7 32bit

WEIGHTED SUITE	Test Environment	Result	Remark
3DMARK2001 Score	<b>Intel® Atom™ D2550 1.86GHz</b> <b>Kingston DDR3 1333 4G</b> <b>(RJL5Y-L93CTJ-3WEKF)</b> <b>Western Digital 1.0TB</b> <b>(WD10EARS)</b>	Pass	3786
3DMARK2003 Score		Pass	2632
3DMARK2005 Score		Pass	1052

### 5.4 3D MARK2006

Windows 7 32bit

Item	WEIGHTED SUITE	Test Environment	Result	Remark
1	3DMARK Score	<b>Intel® Atom™ D2550 1.86GHz</b> <b>Kingston DDR3 1333 4G</b> <b>(RJL5Y-L93CTJ-3WEKF)</b> <b>Western Digital 1.0TB</b> <b>(WD10EARS)</b>	Pass	432
2	SM2.0 Score		Pass	171
3	HDR/SM3.0 Score		Pass	131
4	CPU Score		Pass	966

## 5.5 PC MARK2002

<b>Test Environment</b>
<b>Intel® Atom™ D2550 1.86GHz</b> <b>Kingston DDR3 1333 4G(RJL5Y-L93CTJ-3WEKF)</b> <b>Western Digital 1.0TB(WD10EARS)</b>

Windows 7 32bit

Item	Weighted Suite	Result	Remark
1	CPU Score	N/A	N/A
2	Memory Score	Pass	7806
3	HDD Score	Pass	2077

## 5.6 PC MARK2004

<b>Test Environment</b>
<b>Intel® Atom™ D2550 1.86GHz</b> <b>Kingston DDR3 1333 4G(RJL5Y-L93CTJ-3WEKF)</b> <b>Western Digital 1.0TB(WD10EARS)</b>

Windows 7 32-bit

Item	Weighted Suite	Result	Remark
1	PCMark Score	N/A	N/A
2	CPU Score	N/A	N/A
3	Memory Score	Pass	3679
4	Graphic Score	Pass	998
5	HDD Score	Pass	4922

## 5.7 PC MARK2005

<b>Test Environment</b>
<b>Intel® Atom™ D2550 1.86GHz</b> <b>Kingston DDR3 1333 4G(RJL5Y-L93CTJ-3WEKF)</b> <b>Western Digital 1.0TB(WD10EARS)</b>

**Windows 7 32-bit**

<b>Item</b>	<b>Weighted Suite</b>	<b>Result</b>	<b>Remark</b>
<b>1</b>	<b>PCMark Score</b>	N/A	N/A
<b>2</b>	<b>CPU Score</b>	Pass	2223
<b>3</b>	<b>Memory Score</b>	Pass	3041
<b>4</b>	<b>Graphic Score</b>	N/A	N/A
<b>5</b>	<b>HDD Score</b>	N/A	N/A

## 5.8 Storage Performance

### 5.8.1 HDD

Test environment:

OS Windows 7

Program (HD Tune)

HDD Model	Interface	Capacity	Average	Burst Rate	Access time
Western Digital WD10EARS-00Y5B1	SATA	1.0TB	70.8 MB/sec	81.0 MB/sec	16.2 ms
Western Digital WD5000AAKX-221CA0	SATA	500GB	100.7 MB/sec	127.5 MB/sec	15.8 ms
Western Digital WD3200BEKT	SATA	320GB	64.5 MB/sec	127.0 MB/sec	14.6 ms
Western Digital WD2500AAKS-00VYA0	SATA	250GB	62.7 MB/sec	99.8 MB/sec	12.5 ms
Western Digital WD1600AAJS-00B4A0	SATA	160GB	98.4 MB/sec	113.7 MB/sec	15.9 ms
Western Digital WD800BEVS-00RST0	SATA	80GB	34.6 MB/sec	79.1 MB/sec	17.3 ms
MemoRjght FTM-Plus	SATA	60GB	165.5 MB/sec	106.9 MB/sec	0.3 ms

## 5.8.2 CD-ROM

Test environment:

OS Windows 7

Program (NERO)

CD-ROM Model	Interface	Average Speed	Full Read	Burst Rate	CD
Pioneer DVR-219L	SATA	22.29x	92 ms	29 MB/s	52X CD-R
Buffalo DVSM-PC58U2V	USB	12.13x	109 ms	20 MB/s	52X CD-R
LiteOn SOSW-833SX	USB	10.21x	101 ms	20 MB/s	52X CD-R
LiteOn eTAU108	USB	10.13x	166 ms	16 MB/s	52X CD-R

## 5.9 Vibration Test

Motherboard	LE-379N_B by Rick			
Test Equipment	VS-5060L			
Amplitude	Degree	Frequency	Time (1min/1Time)	Result
0.75mm	40°	5 → 55 → 5 Hz	10	PASS
1.00mm	55°	5 → 55 → 5 Hz	10	PASS
1.25mm	70°	5 → 55 → 5 Hz	10	PASS
1.5mm	90°	5 → 55 → 5 Hz	10	PASS
1.5mm	90°	5 → 55 → 5 Hz	120	PASS