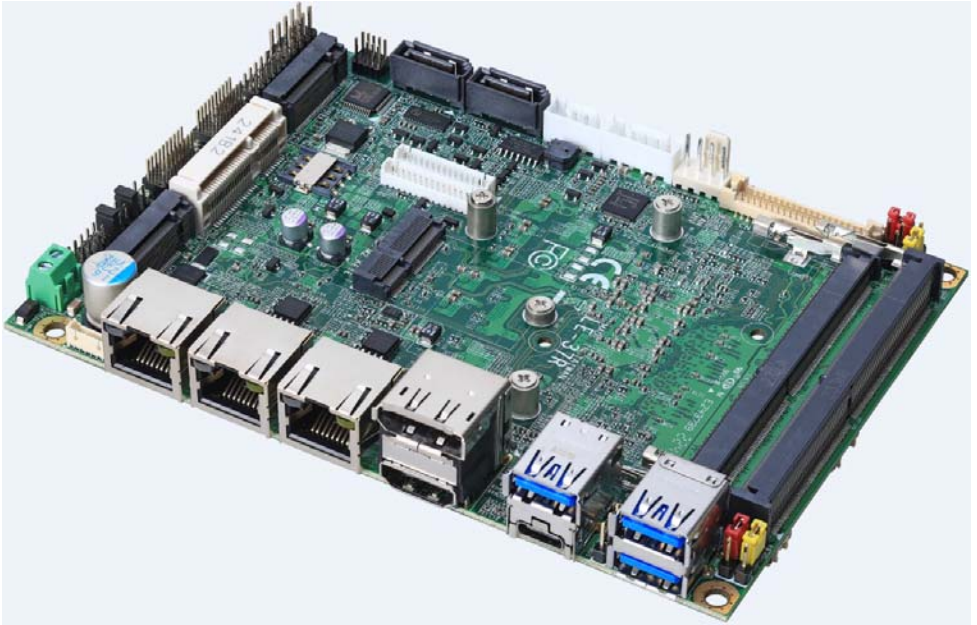


Product Test Report



Product Name	LE-37R
Product Version	A
Issued Date	2024.09.03
Report Edition	1.1
BIOS Version	1.0
Testing Engineer	Perry & Rick
Check Engineer	Daniel

REVISION HISTORY

DATE	REVISION NO.	PAGE	DESCRIPTONS
2023.04.28	Ver. 1.0	59	Initial Release
2024.09.03	Ver. 1.1	85	Add 13 th CPU test result

Index

1. Function test	4
1.1 Hardware functions	4
1.2 BIOS function	5
1.3 Driver.....	6
2. Compatibility test	6
2.1 CPU Test	6
2.2 Memory Test.....	7
2.3 HDMI Graphic Quality Test.....	8
2.4 Display Port Graphic Quality Test	9
2.5 Audio	10
2.6 HDD Test	10
2.7 DVD-ROM Test.....	11
2.8 USB Test	12
2.9 Serial Port Test	13
2.10 LAN Test.....	13
2.11 Power Supply Test.....	14
2.12 OS Install.....	14
2.13 PCI Express Mini Card.....	14
2.14 M2(Key E) Expansion slot.....	15
2.15 M2_NVME(Key M) Expansion slot.....	15
3. Environmental test	16
3.1 Temperature Test.....	16
3.2 Thermal measurements at various points on the board.....	22
4. Reliability Test	26
4.1 Power Consumption Test	26
5. Performance Test	34
5.1 3D MARK VANTAGE.....	34
5.2 3D MARK 11.....	38

5.3 3D MARK	49
5.4 PC MARK 7 & 8.....	52
5.5 PC MARK 10.....	55
5.6 PerformanceTest 9.0	61
5.7 Geekbench 5.....	66
5.8 Geekbench 6.....	70
5.9 Cinebench 11.5	75
5.10 Cinebench R23.....	79
5.11 Storage Performance	84

1. Function test

1.1 Hardware functions

Base Function Test

Item	Description	Result
1	Power Button	PASS
2	Reset	PASS
3	Power LED	PASS
4	HDD LED	PASS
5	CPUFAN	PASS
6	SYSFAN	PASS
7	CN_AUDIO	PASS
8	LAN1(I219)	PASS
9	LAN2(I226-LM)	PASS
10	LAN3(I226-LM)	PASS
11	DDR5_A/B	PASS
12	CN_SATA1/2	PASS
13	DC_OUT	PASS
14	USB3 - 1/2/3	PASS
15	CN_USB2	PASS
16	CN_DVI/HDMI 1	PASS
17	CN_DVI/HDMI 2	PASS
18	CN_COM 1/2	PASS
19	CN_COM 3/4	PASS
20	CN_DIO	PASS
21	HDMI	PASS
22	Display Port	PASS
23	LVDS	PASS

24	CN_INV	PASS
25	M2-KEYE	PASS
26	M2-NVME1	PASS
27	M2-NEME2	PASS
28	MPX	PASS
29	Type-C	PASS

Jumper

Item	Description	Result
1	JRTC	PASS
2	JAT	PASS
3	JMSATA	PASS
4	JVLCD	PASS
5	JP1&JP2	PASS

1.2 BIOS function

Item	Description	Result	Remark
1	Press 'Del' to run Setup Utility	PASS	
2	Ctrl-Alt-Del – Soft-Reboot	PASS	
3	Save & Exit Setup	PASS	
4	Date & Time Setting	PASS	
5	SATA Controller(s)	PASS	
6	BIOS LOCK	PASS	
7	HD Audio	PASS	
8	EDID Panel Type	PASS	
9	Restore On Power Loss	PASS	

Item	Description	Result	Remark
10	Watch Dog Timer Select	PASS	
11	Power On By RTC Alarm	PASS	
12	Wake On LAN	PASS	

1.3 Driver

CD edition : IPCI2-1.3

1. Windows 10 64 bit Driver Test

Item	Description	Result	Version
1	Chipset Driver	PASS	
2	VGA Driver	PASS	30.0.101.1960
3	Audio Driver	PASS	6.0.1.8036
4	LAN Driver	PASS	I219LM:12.19.2.45 I226LM:1.1.3.28

2. Compatibility test

2.1 CPU Test

Test environment:

OS: Windows 10 64bit

Test program : BurnIn Test8.1 & AIDA64

Spec	Performance -core Frequency	Family	Processor	Processor Base Power	Smart Cache	Result
SRLE4	4.5GHz	CORE	i7-1270PE	28W	18 MB	PASS
SRLZH	4.7GHz	CORE	i7-1265UE	15W	12 MB	PASS
SRMNE	4.8GHz	CORE	i7-1370PE	28W	24 MB	PASS
SRMJL	4.9GHz	CORE	i7-1365UE	15W	12 MB	PASS

2.2 Memory Test

Test environment:

OS: Windows 10 64bit

Test program : AIDA64 (Stress system memory)

Manufacturer	Chip	Frequency	Capacity Mbytes	Memory test Source	Remark
Innodisk M5S0-BGS20 CVP-K35	SEC 149 K4RAH086VB BCQK	DDR5 4800	32 GB	PASS	4800
Kingston KVR48S40S8 -16	Micron 2EA45D8BNJ	DDR5 4800	16 GB	PASS	4200
ADATA AD5S480016 G-S	Micron 2CA45D8BNJ	DDR5 4800	16 GB	PASS	4200
ADATA AD5S480016 G-S	Spectek PT010 TP	DDR5 4800	16 GB	PASS	4200
Crucial CT16G48C40 S5.M8A1	Micron 1YA45D8BNJ	DDR5 4800	16 GB	PASS	4200
Transcend JM4800ASE- 16G	SEC 210 K4RAH086VB BCQK	DDR5 4800	16 GB	PASS	4800
ACPI 7D5948BS-0H VA2BB01	SK hynix H5CG48AGB D X018	DDR5 4800	16 GB	PASS	4800
ACPI 7D5848BS-0H VA3BB01	SK hynix H5CG46AGB D X018	DDR5 4800	8 GB	PASS	4800
SAMSUNG M425R4GA3 BB0-CQK	SEC 243 K4RAH086VB BCQK	DDR5 4800	32 GB	PASS	4800
Kingston KVR48S40BS 6-8	SK hynix H5CG46MEB D X015	DDR5 4800	8 GB	PASS	4800

2.3 HDMI Graphic Quality Test

Test environment:

OS Windows 10 64bit

Driver version : 30.0.101.1960

Resolution	Color	Result	Remark
800 x 600	32bit	PASS	
1024 x 768	32bit	PASS	
1152 x 864	32bit	PASS	
1280 x 600	32bit	PASS	
1280 x 720	32bit	PASS	
1280 x 768	32bit	PASS	
1280 x 800	32bit	PASS	
1280 x 960	32bit	PASS	
1280 x 1024	32bit	PASS	
1360 x 768	32bit	PASS	
1366 x 768	32bit	PASS	
1400 x 1050	32bit	PASS	
1440 x 900	32bit	PASS	
1600 x 900	32bit	PASS	
1680 x 1050	32bit	PASS	
1920 x 1080	32bit	PASS	
3840 x 2160	32bit	PASS	

2.4 Display Port Graphic Quality Test

Test environment:

OS Windows 10 64bit

Driver version : 30.0.101.1960

Resolution	Color	Result	Remark
800 x 600	32bit	PASS	
1024 x 768	32bit	PASS	
1152 x 864	32bit	PASS	
1280 x 600	32bit	PASS	
1280 x 720	32bit	PASS	
1280 x 768	32bit	PASS	
1280 x 800	32bit	PASS	
1280 x 960	32bit	PASS	
1280 x 1024	32bit	PASS	
1360 x 768	32bit	PASS	
1366 x 768	32bit	PASS	
1400 x 1050	32bit	PASS	
1440 x 900	32bit	PASS	
1600 x 900	32bit	PASS	
1600 x 1050	32bit	PASS	
1920 x 1080	32bit	PASS	
3840 x 2160	32bit	PASS	

2.5 Audio

Test environment:

OS Windows 10 64-bit

Driver version : 6.0.1.8036

Item	Description	Result	Remark
1	2.1CH	PASS	
2	Microphone	PASS	

OS Ubuntu 22.04

Item	Description	Result	Remark
1	2.1CH	PASS	

OS Fedora 36 Workstation

Item	Description	Result	Remark
1	2.1CH	PASS	

2.6 HDD Test

Test environment:

OS Windows 10 64bit

Test program : BurnIn Test8.1 & CrystalDiskMark

HDD Model	Interface	Capacity	HDD Size Detect	HDD Data Transfer	HDD LED Check
INTEL SSDSC2BW240A4	SSD	240 GB	PASS	PASS	PASS
SPCC Solid State disk(S55)	SSD	120 GB	PASS	PASS	PASS
CT120 BX500	SSD	120 GB	PASS	PASS	PASS

Kingston SV300S37A	SSD	240 GB	PASS	PASS	PASS
WD 10EZEX	HDD	1 TB	PASS	PASS	PASS
Kingston DT100G3/32G	USB	32 GB	PASS	PASS	PASS
ACPI MSS4F-M SATA III	mSATA	64 GB	PASS	PASS	PASS

2.7 DVD-ROM Test

Test environment:

OS Windows 10 64bit

DVD-ROM Model	Interface	DVD-ROM Detect	DVD-ROM Data Transfer	Play DVD
Transcend DVD TS8XDVDS-K	USB	PASS	PASS	PASS
LITEON DVD eTAU108	USB	PASS	PASS	PASS
PIONEER DVD DVR-XD11T	USB	PASS	PASS	PASS
ZYNET GT32N A201	USB	PASS	PASS	PASS
LITEON iHES312	SATA	PASS	PASS	PASS
ASUS DRW-24D1ST	SATA	PASS	PASS	PASS
ASUS DRW-1814BLT	SATA	PASS	PASS	PASS
LG GH20NS15	SATA	PASS	PASS	PASS
PIONEER DVD DVR-S19LBK	SATA	PASS	PASS	PASS

2.8 USB Test

1. Windows 10 64-bit

Item	Result	Remark
External USB Keyboard Test	PASS	
External USB Mouse Test	PASS	
Hot plugging test	PASS	
DVD-ROM	PASS	
USB Mass storage	PASS	

2. Ubuntu 22.04

Item	Result	Remark
External USB Keyboard Test	PASS	
External USB Mouse Test	PASS	
Hot plugging test	PASS	
DVD-ROM	PASS	
USB Mass storage	PASS	

3. Fedora 36 Workstation

Item	Result	Remark
External USB Keyboard Test	PASS	
External USB Mouse Test	PASS	
Hot plugging test	PASS	
DVD-ROM	PASS	
USB Mass storage	PASS	

2.9 Serial Port Test

1. Windows 10 64-bit

Item	Description	Result	Remark
1	Device Manager Check	PASS	
2	RS-232 Mouse Test	PASS	

2.10 LAN Test

Data Transfer Test environment:

-CAT 6 UTP 100M

-8 HR. continuous

1. Windows 10 64-bit

Item	Description	Result	Remark
1	Device Manager Check	PASS	(IPERF3)
2	Data Transfer Test	PASS	(IPERF3)

2. Ubuntu 22.04

Item	Description	Result	Remark
1	Device Manager Check	PASS	

3. Fedora 36 Workstation

Item	Description	Result	Remark
1	Device Manager Check	PASS	

2.11 Power Supply Test

Item	Type	Description	Result	Remark
1	ATX Power	Thermaltake TR2-450AH2NCB	PASS	
2	ATX Power	Seasonic SS-520GB 520W	PASS	
3	ATX Power	AcBel PC7008 430W	PASS	

2.12 OS Install

Item	Description	Result	Remark
1	Windows 10 64 bit	PASS	
2	Ubuntu22.04 (ubuntu-22.04.1-desktop-amd64)	PASS	
3	Fedora 36 (Fedora-Workstation-Live-x86_64-36-1.5)	PASS	
4	RHEL 8.6 (Red Hat Enterprise Linux – 8.6)	PASS	

2.13 PCI Express Mini Card

Motherboard	PCI Express mini card	Result	Remark
LE-37R	MPX-M2E+M2-210	PASS	
	MPX-M2E+M2-225	PASS	
	MPX-M2E+ M2-2213	PASS	
	MPX-210D	PASS	
	MPX-210D2	PASS	
	MPX-225	PASS	
	MPX-350	PASS	
	MPX-2213	PASS	
	MPX-4232	PASS	

2.14 M2(Key E) Expansion slot

Motherboard	PCI Express mini card	Result	Remark
LE-37R	M2-210	PASS	
	M2-225	PASS	
	M2-2213	PASS	

2.15 M2_NVME(Key M) Expansion slot

Motherboard	M2(Key M)	Result	Remark
LE-37R	NVMe SSD (Intel)	PASS	Model : SSDPEKKW512G7
	NVMe SSD (ADATA)	PASS	Model : ASX8000NP-128GM-C
	NVMe SSD (SEAGATE)	PASS	Model : ZP500GM30002
	NVMe SSD(ACPI)	PASS	Model : M2PDD-8L
	M2-3504 & M2-3502	PASS	

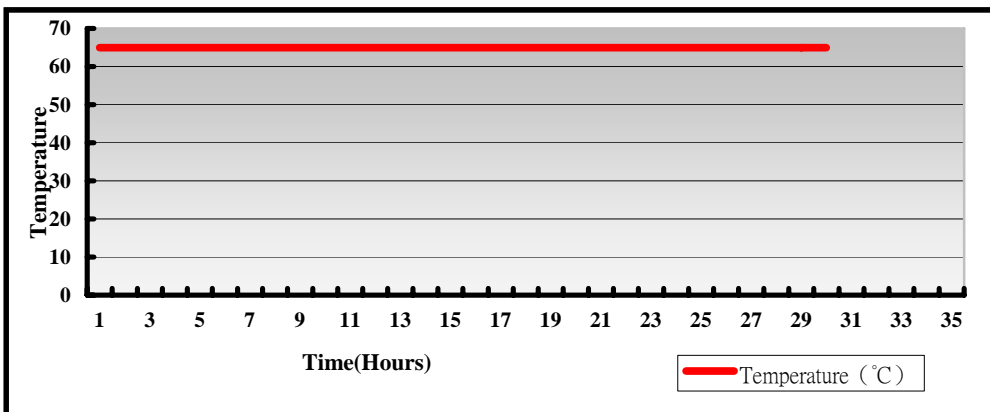
3. Environmental test

3.1 Temperature Test

Hardware Device list:

System Board	LE-37RP7
CPU	Intel(R) Core(TM) i7-1270PE 4.5GHz
Memory	Innodisk M5S0-BGS2OCVP-K35 32GB x2 (SEC 149 K4RAH086VB BCQK)
HDD	Kingston SV300S37A 240GB
Operating OS	Windows 10 64bit
Test Equipment	GIANT FORCE GTH-150-60-SP-AR LCD-9530 Programmer/Controller
Test Program	BurnIn 8.1

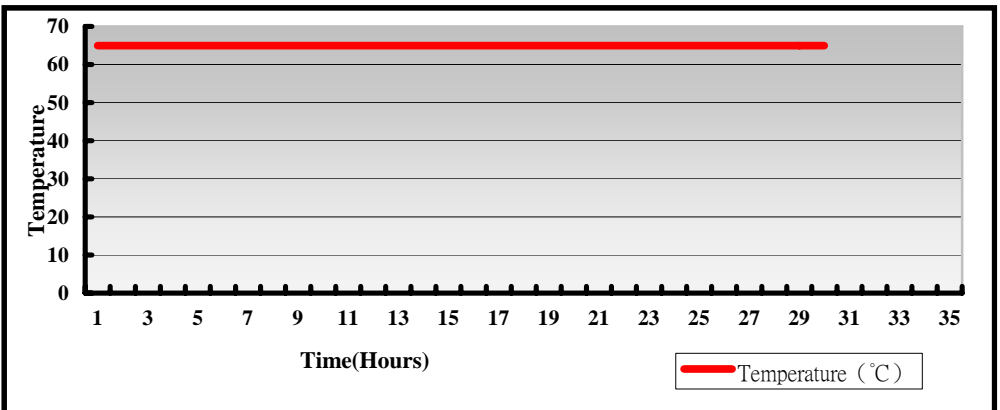
Test Result:



Hardware Device list:

System Board	LE-37RU7
CPU	Intel(R) Core(TM) i7-1265UE 4.7GHz
Memory	Innodisk M5S0-BGS2OCVP-K35 32GB x2 (SEC 149 K4RAH086VB BCQK)
HDD	Kingston SV300S37A 240GB
Operating OS	Windows 10 64bit
Test Equipment	GIANT FORCE GTH-150-60-SP-AR LCD-9530 Programmer/Controller
Test Program	BurnIn 8.1

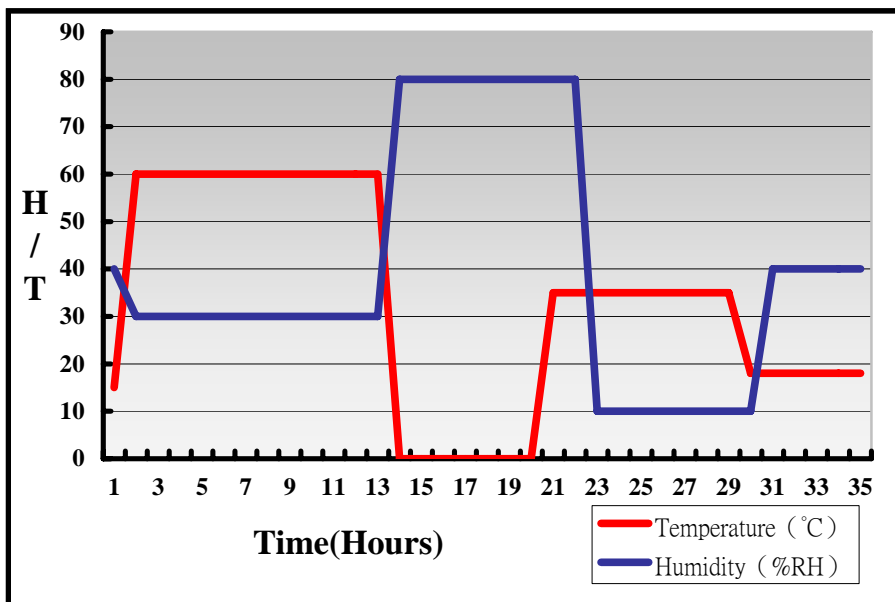
Test Result:



Hardware Device list:

System Board	LE-37RP7
CPU	Intel(R) Core(TM) i7-1270PE 4.5GHz
Memory	Innodisk M5S0-BGS2OCVP-K35 32GB x2 (SEC 149 K4RAH086VB BCQK)
HDD	Kingston SV300S37A 240GB
Operating OS	Windows 10 64bit
Test Equipment	GIANT FORCE GTH-150-60-SP-AR LCD-9530 Programmer/Controller
Test Program	BurnIn 8.1

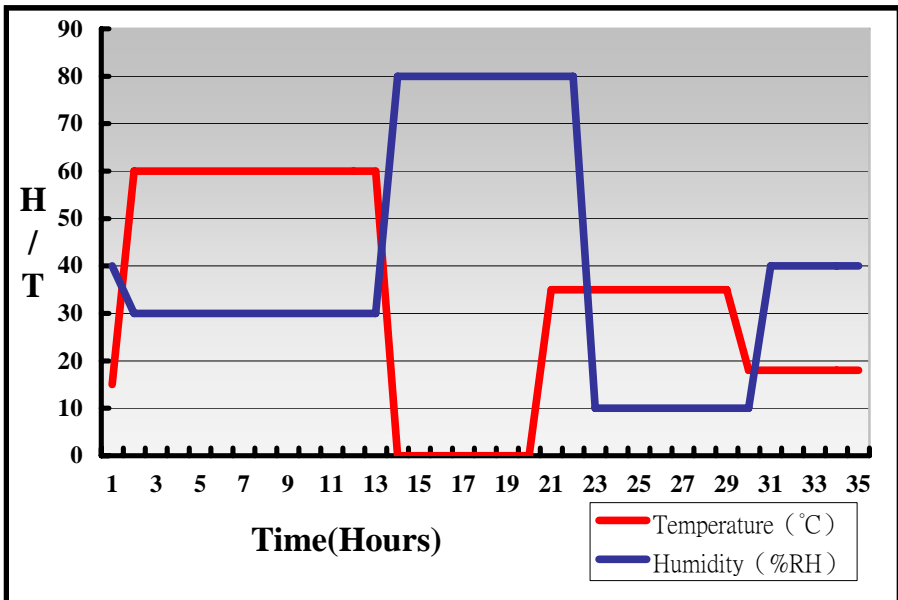
Test Result:



Hardware Device list:

System Board	LE-37RU7
CPU	Intel(R) Core(TM) i7-1265UE 4.7GHz
Memory	Innodisk M5S0-BGS2OCVP-K35 32GB x2 (SEC 149 K4RAH086VB BCQK)
HDD	Kingston SV300S37A 240GB
Operating OS	Windows 10 64bit
Test Equipment	GIANT FORCE GTH-150-60-SP-AR LCD-9530 Programmer/Controller
Test Program	BurnIn 8.1

Test Result:



Boot up Test:

Hardware Device list:

System Board	LE-37RP7
CPU	Intel(R) Core(TM) i7-1270PE 4.5GHz
Memory	Kingston KVR48S40S8-16 16GB x2 (Micron 2EA45D8BNJ)
HDD	Kingston SV300S37A 240GB

Temperature	Result	Remark
-40°C	PASS	50 Times
80°C	PASS	50 Times

Boot up Test:

Hardware Device list:

System Board	LE-37RU7
CPU	Intel(R) Core(TM) i7-1265UE 4.7GHz
Memory	Kingston KVR48S40S8-16 16GB x2 (Micron 2EA45D8BNJ)
HDD	Kingston SV300S37A 240GB

Temperature	Result	Remark
-40°C	PASS	50 Times
80°C	PASS	50 Times

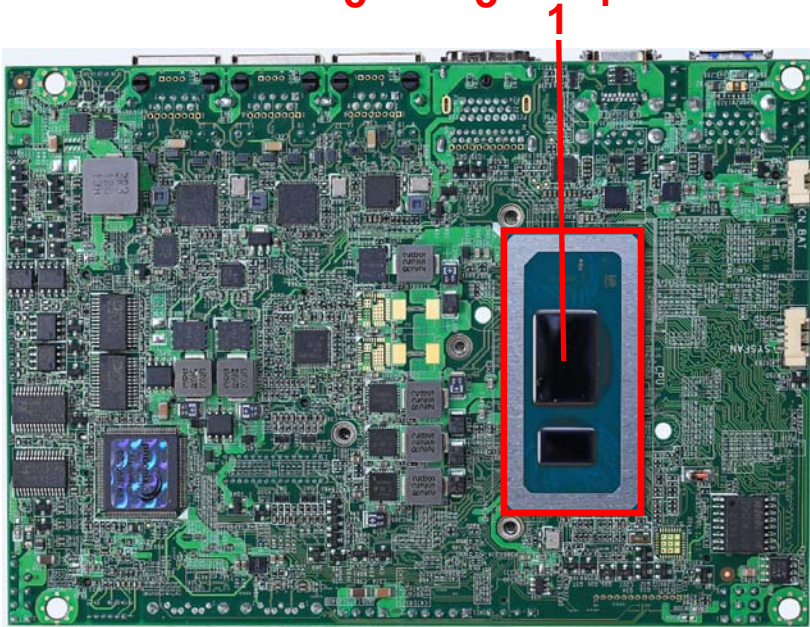
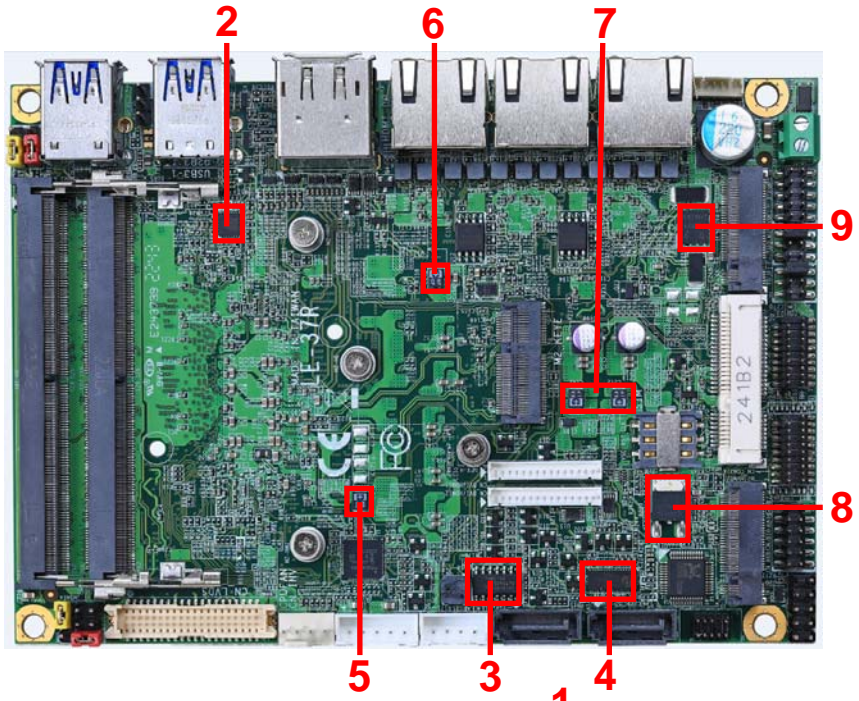
3.2 Thermal measurements at various points on the board

Test Environment:

CPU	Intel(R) Core(TM) i7-1270PE 4.5GHz
Memory	Innodisk M5S0-BGS2OCVP-K35 32GB x2 (SEC 149 K4RAH086VB BCQK)
HDD	Kingston SV300S37A 240GB
Power	SEASONIC SS-520GB ACTIVE PFC F3 (S12II-520Bronze)
Operating System	Windows 10 64-bit
Test Program	BurnIn 8.1

Test Result:

Item	Environmental temperature	25°C
1	CPU	55°C
2	U2	45°C
3	U14	40°C
4	U18	34.7°C
5	C120	41.7°C
6	C148	42.8°C
7	C192 & C212	34.5°C
8	Q24	32.4°C
9	Q27	43.3°C

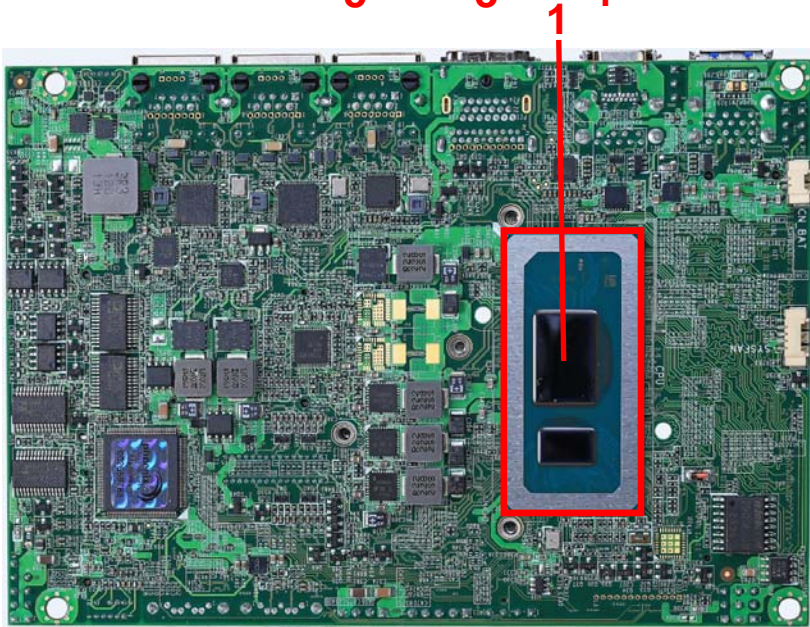
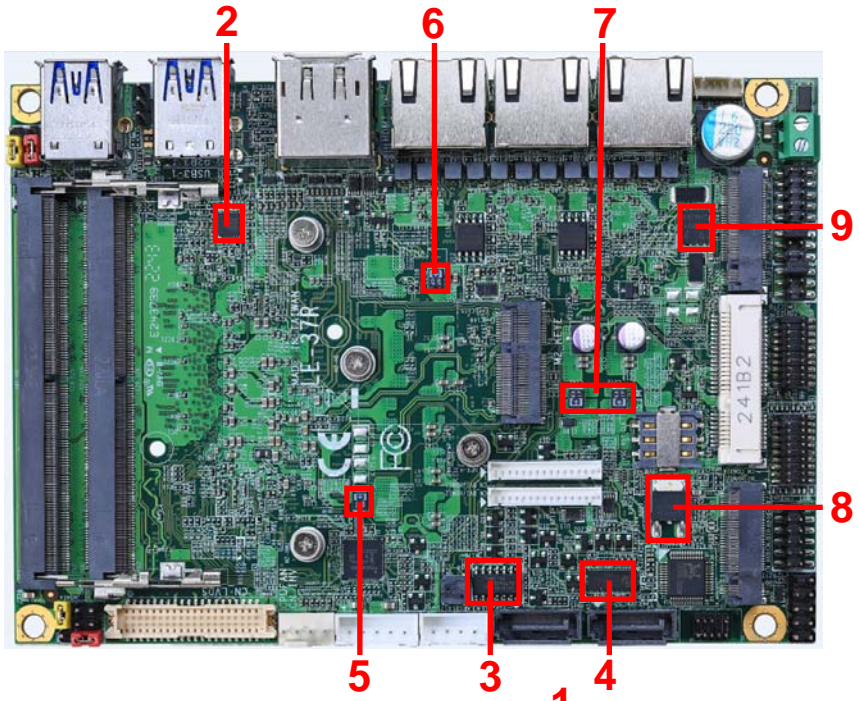


Test Environment:

CPU	Intel(R) Core(TM) i7-1265UE 4.7GHz
Memory	Innodisk M5S0-BGS2OCVP-K35 32GB x2 (SEC 149 K4RAH086VB BCQK)
HDD	Kingston SV300S37A 240GB
Power	SEASONIC SS-520GB ACTIVE PFC F3 (S12II-520Bronze)
Operating System	Windows 10 64-bit
Test Program	BurnIn 8.1

Test Result:

Item	Environmental temperature	25°C
1	CPU	50°C
2	U2	40.8°C
3	U14	39°C
4	U18	34.1°C
5	C120	40.3°C
6	C148	39.4°C
7	C192 & C212	36.4°C
8	Q24	34.6°C
9	Q27	38.4°C



4. Reliability Test

4.1 Power Consumption Test

1. Test Environment:

Motherboard	LE-37RP7
CPU	Intel(R) Core(TM) i7-1270PE 4.5GHz
Memory	Innodisk M5S0-BGS2OCVP-K35 32GB x2 (SEC 149 K4RAH086VB BCQK)
HDD	Kingston SV300S37A 240GB

**Power Supply: SEASONIC SS-520GB ACTIVE PFC F3(S12II-520Bronze)
GW INSTEK SPS-3610(DC Power Supply)(24V)**

Voltage	UEFI Boot up		Windows 10 64bit BurnIn 8.1 (15min)	
	Current (A)	Power (W)	Current (A)	Power (W)
12V	1.93	23.16	4.58	54.96
24V	1.21	29.04	2.33	55.92

1. a. Test Environment:

The same as above but with LCD

Display Panel	AUO M215HW03 V1 21.5”LCD
----------------------	---------------------------------

**Power Supply: SEASONIC SS-520GB ACTIVE PFC F3(S12II-520Bronze)
GW INSTEK SPS-3610(DC Power Supply)(24V)**

Voltage	UEFI Boot up		Windows 10 64bit BurnIn 8.1 (15min)	
	Current (A)	Power (W)	Current (A)	Power (W)
12V	3.69	44.28	6.36	76.32
24V	1.89	45.36	3.3	79.2

2. Test Environment:

Motherboard	LE-37RU7
CPU	Intel(R) Core(TM) i7-1265UE 4.7GHz
Memory	Innodisk M5S0-BGS2OCVP-K35 32GB x2 (SEC 149 K4RAH086VB BCQK)
HDD	Kingston SV300S37A 240GB

Power Supply: SEASONIC SS-520GB ACTIVE PFC F3(S12II-520Bronze)
GW INSTEK SPS-3610(DC Power Supply)(19V & 24V)

Voltage	UEFI Boot up		Windows 10 64bit BurnIn 8.1 (15min)	
	Current (A)	Power (W)	Current (A)	Power (W)
12V	1.71	20.52	7	84
24V	1.06	25.44	2.97	71.28

2. a. Test Environment:

The same as above but with LCD

Display Panel	AUO M215HW03 V1 21.5”LCD
----------------------	---------------------------------

Power Supply: SEASONIC SS-520GB ACTIVE PFC F3(S12II-520Bronze)
GW INSTEK SPS-3610(DC Power Supply)(24V)

Voltage	UEFI Boot up		Windows 10 64bit BurnIn 8.1 (15min)	
	Current (A)	Power (W)	Current (A)	Power (W)
12V	3.4	40.8	8.24	98.88
24V	1.79	42.96	3.92	94.08

3. Test Environment:

Motherboard	LE-37RP5
CPU	Intel(R) Core(TM) i5-1250PE 4.4GHz
Memory	Innodisk M5S0-BGS2OCVP-K35 32GB x2 (SEC 149 K4RAH086VB BCQK)
HDD	Kingston SV300S37A 240GB

**Power Supply: SEASONIC SS-520GB ACTIVE PFC F3(S12II-520Bronze)
GW INSTEK SPS-3610(DC Power Supply)(24V)**

Voltage	UEFI Boot up		Windows 10 64bit 3DMARK + Prime95	
	Current (A)	Power (W)	Current (A)	Power (W)
12V	2.02	24.24	6.38	76.56
24V	1.11	26.64	2.31	55.44

3. a. Test Environment:

The same as above but with LCD

Display Panel	AUO M215HW03 V1 21.5”LCD
----------------------	---------------------------------

**Power Supply: SEASONIC SS-520GB ACTIVE PFC F3(S12II-520Bronze)
GW INSTEK SPS-3610(DC Power Supply)(24V)**

Voltage	UEFI Boot up		Windows 10 64bit 3DMARK + Prime95	
	Current (A)	Power (W)	Current (A)	Power (W)
12V	3.54	42.48	6.8	81.6
24V	1.85	44.4	3.13	75.12

4. Test Environment:

Motherboard	LE-37RU5
CPU	Intel(R) Core(TM) i5-1245UE 4.4GHz
Memory	Innodisk M5S0-BGS20CVP-K35 32GB x2 (SEC 149 K4RAH086VB BCQK)
HDD	Kingston SV300S37A 240GB

**Power Supply: SEASONIC SS-520GB ACTIVE PFC F3(S12II-520Bronze)
GW INSTEK SPS-3610(DC Power Supply)(24V)**

Voltage	UEFI Boot up		Windows 10 64bit BurnIn 8.1 (15min)	
	Current (A)	Power (W)	Current (A)	Power (W)
12V	1.76	21.12	5.57	66.84
24V	1.07	25.68	3.13	75.12

4. a. Test Environment:

The same as above but with LCD

Display Panel	AUO M215HW03 V1 21.5”LCD
----------------------	---------------------------------

**Power Supply: SEASONIC SS-520GB ACTIVE PFC F3(S12II-520Bronze)
GW INSTEK SPS-3610(DC Power Supply)(24V)**

Voltage	UEFI Boot up		Windows 10 64bit BurnIn 8.1 (15min)	
	Current (A)	Power (W)	Current (A)	Power (W)
12V	3.27	39.24	8.31	99.72
24V	1.77	42.48	3.76	90.24

5. Test Environment:

Motherboard	LE-37RP7R_B
CPU	Intel® Core™ i7-1370PE 4.8GHz
Memory	innodisk DDR5 4800 32GB*2 (SEC 149 K4RAHDB 6V8 BCQK)
HDD	Western Digital WD3200AAKS-00B3A0 320GB

12V Adapter : EDAC EA10951C-120 84W

19V Adapter : FSP FSP120-AAA 120W

24V DC Power Supply : ABM 9306D

Voltage	UEFI Boot up		Windows 10 64bit BurnIn 8.1 (15min)	
	Current (A)	Power (W)	Current (A)	Power (W)
12V	1.67	20.04	3.06	36.72
19V	1.05	19.95	1.71	32.49
24V	0.83	19.92	1.36	32.64

5.a. Test Environment:

The same as above but with LCD panel

Display Panel	AUO M215HW03 21.5"LCD
----------------------	------------------------------

12V Adapter : EDAC EA10951C-120 84W

19V Adapter : FSP FSP120-AAA 120W

24V DC Power Supply : ABM 9306D

Voltage	UEFI Boot up		Windows 10 64bit BurnIn 8.1 (15min)	
	Current (A)	Power (W)	Current (A)	Power (W)
12V	3.24	38.88	4.71	56.52
19V	2.03	38.57	2.8	53.2
24V	1.59	38.16	2.19	52.56

6. Test Environment:

Motherboard	LE-37RU7R_B
CPU	Intel® Core™ i7-1365UE 4.9GHz
Memory	innodisk DDR5 4800 32GB*2 (SEC 149 K4RAHDB 6V8 BCQK)
HDD	Western Digital WD3200AAKS-00B3A0 320GB

12V Adapter : EDAC EA10951C-120 84W

19V Adapter : FSP FSP120-AAA 120W

24V DC Power Supply : ABM 9306D

Voltage	UEFI Boot up		Windows 10 64bit BurnIn 8.1 (15min)	
	Current (A)	Power (W)	Current (A)	Power (W)
12V	1.39	16.68	2.18	26.16
19V	0.92	17.48	1.39	26.41
24V	0.73	17.52	1.13	27.12

6.a. Test Environment:

The same as above but with LCD panel

Display Panel	AUO M215HW03 21.5"LCD
----------------------	------------------------------

12V Adapter : EDAC EA10951C-120 84W

19V Adapter : FSP FSP120-AAA 120W

24V DC Power Supply : ABM 9306D

Voltage	UEFI Boot up		Windows 10 64bit BurnIn 8.1 (15min)	
	Current (A)	Power (W)	Current (A)	Power (W)
12V	3.01	36.12	3.85	46.2
19V	1.92	36.48	2.45	46.55
24V	1.49	35.76	1.99	47.76

5. Performance Test

5.1 3D MARK VANTAGE

i7-1270PE

Windows 10 64-bit

Item	Weighted Suite	Test Environment	Result	Remark
1	3DMARK SCORE	Intel(R) Core(TM) i7-1270PE 4.5GHz	PASS	P7442
2	GPU SCORE	Innodisk M5S0-BGS20CVP-K35 32GB x2	PASS	5826
3	CPU SCORE	(SEC 149 K4RAH086VB BCQK) Kingston SV300S37A 240GB	PASS	44367

Windows 10 64-bit

Item	Weighted Suite	Test Environment	Result	Remark
1	3DMARK SCORE	Intel(R) Core(TM) i7-1270PE 4.5GHz	PASS	P7434
2	GPU SCORE	Kingston KVR48S40S8-16 16GBx2 (Micron 2EA45D8BNJ)	PASS	5811
3	CPU SCORE	Kingston SV300S37A 240GB	PASS	45966

Windows 10 64-bit

Item	Weighted Suite	Test Environment	Result	Remark
1	3DMARK SCORE	Intel(R) Core(TM) i7-1270PE 4.5GHz	PASS	P7268
2	GPU SCORE	Crucial CT16G48C40S5.M8A1 (Micron 1YA45D8BNJ)	PASS	5677
3	CPU SCORE	Kingston SV300S37A 240GB	PASS	45583

i5-1250PE**Windows 10 64-bit**

Item	Weighted Suite	Test Environment	Result	Remark
1	3DMARK SCORE	Intel(R) Core(TM) i5-1250PE 4.4GHz Innodisk M5S0-BGS20CVP-K35 32GB x2 (SEC 149 K4RAH086VB BCQK) Kingston SV300S37A 240GB	PASS	P6192
2	GPU SCORE		PASS	4810
3	CPU SCORE		PASS	44869

Windows 10 64-bit

Item	Weighted Suite	Test Environment	Result	Remark
1	3DMARK SCORE	Intel(R) Core(TM) i5-1250PE 4.4GHz Kingston KVR48S40S8-16 16GBx2 (Micron 2EA45D8BNJ) Kingston SV300S37A 240GB	PASS	P6221
2	GPU SCORE		PASS	4833
3	CPU SCORE		PASS	44925

Windows 10 64-bit

Item	Weighted Suite	Test Environment	Result	Remark
1	3DMARK SCORE	Intel(R) Core(TM) i5-1250PE 4.4GHz Crucial CT16G48C40S5.M8A1 (Micron 1YA45D8BNJ) Kingston SV300S37A 240GB	PASS	P6133
2	GPU SCORE		PASS	4768
3	CPU SCORE		PASS	43405

i7-1265UE**Windows 10 64-bit**

Item	Weighted Suite	Test Environment	Result	Remark
1	3DMARK SCORE	Intel(R) Core(TM) i7-1265UE 4.7GHz Innodisk M5S0-BGS20CVP-K35 32GB x2 (SEC 149 K4RAH086VB BCQK) Kingston SV300S37A 240GB	PASS	P7409
2	GPU SCORE		PASS	5851
3	CPU SCORE		PASS	36816

Windows 10 64-bit

Item	Weighted Suite	Test Environment	Result	Remark
1	3DMARK SCORE	Intel(R) Core(TM) i7-1265UE 4.7GHz Kingston KVR48S40S8-16 16GBx2 (Micron 2EA45D8BNJ) Kingston SV300S37A 240GB	PASS	P7402
2	GPU SCORE		PASS	5846
3	CPU SCORE		PASS	36703

Windows 10 64-bit

Item	Weighted Suite	Test Environment	Result	Remark
1	3DMARK SCORE	Intel(R) Core(TM) i7-1265UE 4.7GHz Crucial CT16G48C40S5.M8A1 (Micron 1YA45D8BNJ) Kingston SV300S37A 240GB	PASS	P7338
2	GPU SCORE		PASS	5791
3	CPU SCORE		PASS	36960

i7-1365UE**Windows 10 64-bit**

Item	Weighted Suite	Test Environment	Result	Remark
1	3DMARK SCORE	Intel(R) Core(TM) i7-1365UE 4.9GHz	PASS	P7419
2	GPU SCORE	innodisk DDR5 4800 32GB*2 M5S0-BGS2OCVP-K35 (SEC 149 K4RAHDB 6V8 BCQK)	PASS	5848
3	CPU SCORE	Western Digital WD2500AAKS-00F0A0 250GB	PASS	38228

Windows 10 64-bit

Item	Weighted Suite	Test Environment	Result	Remark
1	3DMARK SCORE	Intel(R) Core(TM) i7-1365UE 4.9GHz	PASS	P7248
2	GPU SCORE	innodisk DDR5 4800 32GB M5S0-BGS2OCVP-K35 (SEC 149 K4RAHDB 6V8 BCQK)	PASS	5705
3	CPU SCORE	Western Digital WD2500AAKS-00F0A0 250GB	PASS	38357

Windows 10 64-bit

Item	Weighted Suite	Test Environment	Result	Remark
1	3DMARK SCORE	Intel(R) Core(TM) i7-1365UE 4.9GHz	PASS	P7396
2	GPU SCORE	Transcend DDR5 4800 16GB*2 JIM4800ASE-16G (SEC 149 K4RAHDB 6V8 BCQK)	PASS	5829
3	CPU SCORE	Western Digital WD2500AAKS-00F0A0 250GB	PASS	38308

Windows 10 64-bit

Item	Weighted Suite	Test Environment	Result	Remark
1	3DMARK SCORE	Intel(R) Core(TM) i7-1365UE 4.9GHz Transcend DDR5 4800 16GB JIM4800ASE-16G (SEC 149 K4RAHDB 6V8 BCQK) Western Digital WD2500AAKS-00F0A0 250GB	PASS	P7397
2	GPU SCORE		PASS	5830
3	CPU SCORE		PASS	38141

5.2 3D MARK 11**i7-1270PE****Windows 10 64-bit**

Item	Weighted Suite	Test Environment	Result	Remark
1	3DMARK SCORE	Intel(R) Core(TM) i7-1270PE 4.5GHz Innodisk M5S0-BGS2OCVP-K35 32GB x2 (SEC 149 K4RAH086VB BCQK) Kingston SV300S37A 240GB	PASS	P1901
2	Graphics SCORE		PASS	1627
3	Physics SCORE		PASS	15895
4	Combined SCORE		PASS	1798

Windows 10 64-bit

Item	Weighted Suite	Test Environment	Result	Remark
1	3DMARK SCORE	Intel(R) Core(TM) i7-1270PE 4.5GHz Kingston KVR48S40S8-16 16GBx2 (Micron 2EA45D8BNJ) Kingston SV300S37A 240GB	PASS	P1920
2	Graphics SCORE		PASS	1646
3	Physics SCORE		PASS	15435
4	Combined SCORE		PASS	1804

Windows 10 64-bit

Item	Weighted Suite	Test Environment	Result	Remark
1	3DMARK SCORE	Intel(R) Core(TM) i7-1270PE 4.5GHz Crucial CT16G48C40S5.M8A1 (Micron 1YA45D8BNJ) Kingston SV300S37A 240GB	PASS	P1884
2	Graphics SCORE		PASS	1617
3	Physics SCORE		PASS	13702
4	Combined SCORE		PASS	1787

i7-1265UE

Windows 10 64-bit

Item	Weighted Suite	Test Environment	Result	Remark
1	3DMARK SCORE	Intel(R) Core(TM) i7-1265UE 4.7GHz Innodisk M5S0-BGS2OCVP-K35 32GB x2 (SEC 149 K4RAH086VB BCQK) Kingston SV300S37A 240GB	PASS	P1894
2	Graphics SCORE		PASS	1624
3	Physics SCORE		PASS	13667
4	Combined SCORE		PASS	1813

Windows 10 64-bit

Item	Weighted Suite	Test Environment	Result	Remark
1	3DMARK SCORE	Intel(R) Core(TM) i7-1265UE 4.7GHz Kingston KVR48S40S8-16 16GBx2 (Micron 2EA45D8BNJ) Kingston SV300S37A 240GB	PASS	P1925
2	Graphics SCORE		PASS	1654
3	Physics SCORE		PASS	13594
4	Combined SCORE		PASS	1821

Windows 10 64-bit

Item	Weighted Suite	Test Environment	Result	Remark
1	3DMARK SCORE	Intel(R) Core(TM) i7-1265UE 4.7GHz Crucial CT16G48C40S5.M8A1 (Micron 1YA45D8BNJ) Kingston SV300S37A 240GB	PASS	P1887
2	Graphics SCORE		PASS	1620
3	Physics SCORE		PASS	13191
4	Combined SCORE		PASS	1803

i5-1250PE**Windows 10 64-bit**

Item	Weighted Suite	Test Environment	Result	Remark
1	3DMARK SCORE	Intel(R) Core(TM) i5-1250PE 4.4GHz Innodisk M5S0-BGS20CVP-K35 32GB x2 (SEC 149 K4RAH086VB BCQK) Kingston SV300S37A 240GB	PASS	P1695
2	Graphics SCORE		PASS	1451
3	Physics SCORE		PASS	15775
4	Combined SCORE		PASS	1577

Windows 10 64-bit

Item	Weighted Suite	Test Environment	Result	Remark
1	3DMARK SCORE	Intel(R) Core(TM) i5-1250PE 4.4GHz Kingston KVR48S40S8-16 16GBx2 (Micron 2EA45D8BNJ) Kingston SV300S37A 240GB	PASS	P1695
2	Graphics SCORE		PASS	1452
3	Physics SCORE		PASS	15488
4	Combined SCORE		PASS	1574

Windows 10 64-bit

Item	Weighted Suite	Test Environment	Result	Remark
1	3DMARK SCORE	Intel(R) Core(TM) i5-1250PE 4.4GHz Crucial CT16G48C40S5.M8A1 (Micron 1YA45D8BNJ) Kingston SV300S37A 240GB	PASS	P1668
2	Graphics SCORE		PASS	1429
3	Physics SCORE		PASS	14010
4	Combined SCORE		PASS	1567

i7-1365UE

Windows 10 64-bit

Item	Weighted Suite	Test Environment	Result	Remark
1	3DMARK SCORE	Intel(R) Core(TM) i7-1365UE 4.9GHz innodisk DDR5 4800 32GB*2 M5S0-BGS2OCVP-K35 (SEC 149 K4RAHDB 6V8 BCQK) Western Digital WD2500AAKS-00F0A0 250GB	PASS	E3320
2	Graphics SCORE		PASS	2864
3	Physics SCORE		PASS	15974
4	Combined SCORE		PASS	2259

Windows 10 64-bit

Item	Weighted Suite	Test Environment	Result	Remark
1	3DMARK SCORE	Intel(R) Core(TM) i7-1365UE 4.9GHz innodisk DDR5 4800 32GB*2 M5S0-BGS2OCVP-K35 (SEC 149 K4RAHDB 6V8 BCQK) Western Digital WD2500AAKS-00F0A0 250GB	PASS	P1893
2	Graphics SCORE		PASS	1619
3	Physics SCORE		PASS	16060
4	Combined SCORE		PASS	1799

Windows 10 64-bit

Item	Weighted Suite	Test Environment	Result	Remark
1	3DMARK SCORE	Intel(R) Core(TM) i7-1365UE 4.9GHz innodisk DDR5 4800 32GB*2 M5S0-BGS2OCVP-K35 (SEC 149 K4RAHDB 6V8 BCQK) Western Digital WD2500AAKS-00F0A0 250GB	PASS	X589
2	Graphics SCORE		PASS	518
3	Physics SCORE		PASS	15766
4	Combined SCORE		PASS	685

Windows 10 64-bit

Item	Weighted Suite	Test Environment	Result	Remark
1	3DMARK SCORE	Intel(R) Core(TM) i7-1365UE 4.9GHz innodisk DDR5 4800 32GB M5S0-BGS2OCVP-K35 (SEC 149 K4RAHDB 6V8 BCQK) Western Digital WD2500AAKS-00F0A0 250GB	PASS	E3297
2	Graphics SCORE		PASS	2863
3	Physics SCORE		PASS	14215
4	Combined SCORE		PASS	2238

Windows 10 64-bit

Item	Weighted Suite	Test Environment	Result	Remark
1	3DMARK SCORE	Intel(R) Core(TM) i7-1365UE 4.9GHz innodisk DDR5 4800 32GB M5S0-BGS2OCVP-K35 (SEC 149 K4RAHDB 6V8 BCQK) Western Digital WD2500AAKS-00F0A0 250GB	PASS	P1903
2	Graphics SCORE		PASS	1635
3	Physics SCORE		PASS	13815
4	Combined SCORE		PASS	1789

Windows 10 64-bit

Item	Weighted Suite	Test Environment	Result	Remark
1	3DMARK SCORE	Intel(R) Core(TM) i7-1365UE 4.9GHz innodisk DDR5 4800 32GB M5S0-BGS2OCVP-K35 (SEC 149 K4RAHDB 6V8 BCQK) Western Digital WD2500AAKS-00F0A0 250GB	PASS	X589
2	Graphics SCORE		PASS	519
3	Physics SCORE		PASS	14146
4	Combined SCORE		PASS	681

Windows 10 64-bit

Item	Weighted Suite	Test Environment	Result	Remark
1	3DMARK SCORE	Intel(R) Core(TM) i7-1365UE 4.9GHz Transcend DDR5 4800 16GB*2 JIM4800ASE-16G (SEC 149 K4RAHDB 6V8 BCQK) Western Digital WD2500AAKS-00F0A0 250GB	PASS	E3330
2	Graphics SCORE		PASS	2874
3	Physics SCORE		PASS	15935
4	Combined SCORE		PASS	2266

Windows 10 64-bit

Item	Weighted Suite	Test Environment	Result	Remark
1	3DMARK SCORE	Intel(R) Core(TM) i7-1365UE 4.9GHz Transcend DDR5 4800 16GB*2 JIM4800ASE-16G (SEC 149 K4RAHDB 6V8 BCQK) Western Digital WD2500AAKS-00F0A0 250GB	PASS	P1918
2	Graphics SCORE		PASS	1642
3	Physics SCORE		PASS	16060
4	Combined SCORE		PASS	1810

Windows 10 64-bit

Item	Weighted Suite	Test Environment	Result	Remark
1	3DMARK SCORE	Intel(R) Core(TM) i7-1365UE 4.9GHz Transcend DDR5 4800 16GB*2 JIM4800ASE-16G (SEC 149 K4RAHDB 6V8 BCQK) Western Digital WD2500AAKS-00F0A0 250GB	PASS	X596
2	Graphics SCORE		PASS	525
3	Physics SCORE		PASS	15627
4	Combined SCORE		PASS	685

Windows 10 64-bit

Item	Weighted Suite	Test Environment	Result	Remark
1	3DMARK SCORE	Intel(R) Core(TM) i7-1365UE 4.9GHz Transcend DDR5 4800 16GB JIM4800ASE-16G (SEC 149 K4RAHDB 6V8 BCQK) Western Digital WD2500AAKS-00F0A0 250GB	PASS	E3311
2	Graphics SCORE		PASS	2873
3	Physics SCORE		PASS	14214
4	Combined SCORE		PASS	2258

Windows 10 64-bit

Item	Weighted Suite	Test Environment	Result	Remark
1	3DMARK SCORE	Intel(R) Core(TM) i7-1365UE 4.9GHz Transcend DDR5 4800 16GB JIM4800ASE-16G (SEC 149 K4RAHDB 6V8 BCQK) Western Digital WD2500AAKS-00F0A0 250GB	PASS	P1911
2	Graphics SCORE		PASS	1640
3	Physics SCORE		PASS	14438
4	Combined SCORE		PASS	1803

Windows 10 64-bit

Item	Weighted Suite	Test Environment	Result	Remark
1	3DMARK SCORE	Intel(R) Core(TM) i7-1365UE 4.9GHz Transcend DDR5 4800 16GB JIM4800ASE-16G (SEC 149 K4RAHDB 6V8 BCQK) Western Digital WD2500AAKS-00F0A0 250GB	PASS	X591
2	Graphics SCORE		PASS	520
3	Physics SCORE		PASS	14216
4	Combined SCORE		PASS	690

i7-1370PE**Windows 10 64-bit**

Item	Weighted Suite	Test Environment	Result	Remark
1	3DMARK SCORE	Intel(R) Core(TM) i7-1370PE 4.8GHz innodisk DDR5 4800 32GB*2 M5S0-BGS2OCVP-K35 (SEC 149 K4RAHDB 6V8 BCQK) Western Digital WD2500AAKS-00F0A0 250GB	PASS	E3362
2	Graphics SCORE		PASS	2866
3	Physics SCORE		PASS	23279
4	Combined SCORE		PASS	2245

Windows 10 64-bit

Item	Weighted Suite	Test Environment	Result	Remark
1	3DMARK SCORE	Intel(R) Core(TM) i7-1370PE 4.8GHz innodisk DDR5 4800 32GB*2 M5S0-BGS2OCVP-K35 (SEC 149 K4RAHDB 6V8 BCQK) Western Digital WD2500AAKS-00F0A0 250GB	PASS	P1925
2	Graphics SCORE		PASS	1642
3	Physics SCORE		PASS	23030
4	Combined SCORE		PASS	1786

Windows 10 64-bit

Item	Weighted Suite	Test Environment	Result	Remark
1	3DMARK SCORE	Intel(R) Core(TM) i7-1370PE 4.8GHz innodisk DDR5 4800 32GB*2 M5S0-BGS2OCVP-K35 (SEC 149 K4RAHDB 6V8 BCQK) Western Digital WD2500AAKS-00F0A0 250GB	PASS	X597
2	Graphics SCORE		PASS	526
3	Physics SCORE		PASS	23053
4	Combined SCORE		PASS	676

Windows 10 64-bit

Item	Weighted Suite	Test Environment	Result	Remark
1	3DMARK SCORE	Intel(R) Core(TM) i7-1370PE 4.8GHz innodisk DDR5 4800 32GB M5S0-BGS2OCVP-K35 (SEC 149 K4RAHDB 6V8 BCQK) Western Digital WD2500AAKS-00F0A0 250GB	PASS	E2411
2	Graphics SCORE		PASS	2346
3	Physics SCORE		PASS	4806
4	Combined SCORE		PASS	1340

Windows 10 64-bit

Item	Weighted Suite	Test Environment	Result	Remark
1	3DMARK SCORE	Intel(R) Core(TM) i7-1370PE 4.8GHz innodisk DDR5 4800 32GB M5S0-BGS2OCVP-K35 (SEC 149 K4RAHDB 6V8 BCQK) Western Digital WD2500AAKS-00F0A0 250GB	PASS	P1778
2	Graphics SCORE		PASS	1560
3	Physics SCORE		PASS	20466
4	Combined SCORE		PASS	1350

Windows 10 64-bit

Item	Weighted Suite	Test Environment	Result	Remark
1	3DMARK SCORE	Intel(R) Core(TM) i7-1370PE 4.8GHz innodisk DDR5 4800 32GB M5S0-BGS2OCVP-K35 (SEC 149 K4RAHDB 6V8 BCQK) Western Digital WD2500AAKS-00F0A0 250GB	PASS	X590
2	Graphics SCORE		PASS	523
3	Physics SCORE		PASS	20138
4	Combined SCORE		PASS	632

Windows 10 64-bit

Item	Weighted Suite	Test Environment	Result	Remark
1	3DMARK SCORE	Intel(R) Core(TM) i7-1370PE 4.8GHz Transcend DDR5 4800 16GB*2 JIM4800ASE-16G (SEC 149 K4RAHDB 6V8 BCQK) Western Digital WD2500AAKS-00F0A0 250GB	PASS	E3143
2	Graphics SCORE		PASS	2785
3	Physics SCORE		PASS	10114
4	Combined SCORE		PASS	2127

Windows 10 64-bit

Item	Weighted Suite	Test Environment	Result	Remark
1	3DMARK SCORE	Intel(R) Core(TM) i7-1370PE 4.8GHz Transcend DDR5 4800 16GB*2 JIM4800ASE-16G (SEC 149 K4RAHDB 6V8 BCQK) Western Digital WD2500AAKS-00F0A0 250GB	PASS	P1923
2	Graphics SCORE		PASS	1640
3	Physics SCORE		PASS	22857
4	Combined SCORE		PASS	1787

Windows 10 64-bit

Item	Weighted Suite	Test Environment	Result	Remark
1	3DMARK SCORE	Intel(R) Core(TM) i7-1370PE 4.8GHz Transcend DDR5 4800 16GB*2 JIM4800ASE-16G (SEC 149 K4RAHDB 6V8 BCQK) Western Digital WD2500AAKS-00F0A0 250GB	PASS	X599
2	Graphics SCORE		PASS	527
3	Physics SCORE		PASS	22828
4	Combined SCORE		PASS	682

Windows 10 64-bit

Item	Weighted Suite	Test Environment	Result	Remark
1	3DMARK SCORE	Intel(R) Core(TM) i7-1370PE 4.8GHz Transcend DDR5 4800 16GB JIM4800ASE-16G (SEC 149 K4RAHDB 6V8 BCQK) Western Digital WD2500AAKS-00F0A0 250GB	PASS	E3349
2	Graphics SCORE		PASS	2871
3	Physics SCORE		PASS	19863
4	Combined SCORE		PASS	2241

Windows 10 64-bit

Item	Weighted Suite	Test Environment	Result	Remark
1	3DMARK SCORE	Intel(R) Core(TM) i7-1370PE 4.8GHz Transcend DDR5 4800 16GB JIM4800ASE-16G (SEC 149 K4RAHDB 6V8 BCQK) Western Digital WD2500AAKS-00F0A0 250GB	PASS	P1919
2	Graphics SCORE		PASS	1640
3	Physics SCORE		PASS	19858
4	Combined SCORE		PASS	1784

Windows 10 64-bit

Item	Weighted Suite	Test Environment	Result	Remark
1	3DMARK SCORE	Intel(R) Core(TM) i7-1370PE 4.8GHz Transcend DDR5 4800 16GB JIM4800ASE-16G (SEC 149 K4RAHDB 6V8 BCQK) Western Digital WD2500AAKS-00F0A0 250GB	PASS	X594
2	Graphics SCORE		PASS	523
3	Physics SCORE		PASS	19807
4	Combined SCORE		PASS	674

5.3 3D MARK

i7-1270PE

Windows 10 64-bit

Item	Weighted Suite	Test Environment	Result	Remark
1	Time Spy	Intel(R) Core(TM) i7-1270PE 4.5GHz Innodisk M5S0-BGS2OCVP-K35 32GB x2 (SEC 149 K4RAH086VB BCQK) Kingston SV300S37A 240GB	PASS	511
2	Graphics SCORE		PASS	439
3	CPU SCORE		PASS	8050

Windows 10 64-bit

Item	Weighted Suite	Test Environment	Result	Remark
1	Time Spy	Intel(R) Core(TM) i7-1270PE 4.5GHz Kingston KVR48S40S8-16 16GBx2 (Micron 2EA45D8BNJ) Kingston SV300S37A 240GB	PASS	510
2	Graphics SCORE		PASS	438
3	CPU SCORE		PASS	8103

Windows 10 64-bit

Item	Weighted Suite	Test Environment	Result	Remark
1	Time Spy	Intel(R) Core(TM) i7-1270PE 4.5GHz Crucial CT16G48C40S5.M8A1 (Micron 1YA45D8BNJ) Kingston SV300S37A 240GB	PASS	506
2	Graphics SCORE		PASS	435
3	CPU SCORE		PASS	7310

i7-1265UE**Windows 10 64-bit**

Item	Weighted Suite	Test Environment	Result	Remark
1	Time Spy	Intel(R) Core(TM) i7-1265UE 4.7GHz Innodisk M5S0-BGS20CVP-K35 32GB x2 (SEC 149 K4RAH086VB BCQK) Kingston SV300S37A 240GB	PASS	508
2	Graphics SCORE		PASS	439
3	CPU SCORE		PASS	5102

Windows 10 64-bit

Item	Weighted Suite	Test Environment	Result	Remark
1	Time Spy	Intel(R) Core(TM) i7-1265UE 4.7GHz Kingston KVR48S40S8-16 16GBx2 (Micron 2EA45D8BNJ) Kingston SV300S37A 240GB	PASS	508
2	Graphics SCORE		PASS	439
3	CPU SCORE		PASS	5120

Windows 10 64-bit

Item	Weighted Suite	Test Environment	Result	Remark
1	Time Spy	Intel(R) Core(TM) i7-1265UE 4.7GHz Crucial CT16G48C40S5.M8A1 (Micron 1YA45D8BNJ) Kingston SV300S37A 240GB	PASS	505
2	Graphics SCORE		PASS	436
3	CPU SCORE		PASS	4916

i5-1250PE

Windows 10 64-bit

Item	Weighted Suite	Test Environment	Result	Remark
1	Time Spy	Intel(R) Core(TM)	PASS	407
2	Graphics SCORE	i5-1250PE 4.4GHz Innodisk M5S0-BGS2OCVP-K35	PASS	349
3	CPU SCORE	32GB x2 (SEC 149 K4RAH086VB BCQK) Kingston SV300S37A 240GB	PASS	8333

Windows 10 64-bit

Item	Weighted Suite	Test Environment	Result	Remark
1	Time Spy	Intel(R) Core(TM)	PASS	407
2	Graphics SCORE	i5-1250PE 4.4GHz Kingston KVR48S40S8-16 16GBx2	PASS	349
3	CPU SCORE	(Micron 2EA45D8BNJ) Kingston SV300S37A 240GB	PASS	8218

Windows 10 64-bit

Item	Weighted Suite	Test Environment	Result	Remark
1	Time Spy	Intel(R) Core(TM)	PASS	407
2	Graphics SCORE	i5-1250PE 4.4GHz Crucial CT16G48C40S5.M8A1	PASS	349
3	CPU SCORE	(Micron 1YA45D8BNJ) Kingston SV300S37A 240GB	PASS	7554

5.4 PC MARK 7 & 8

i7-1270PE

Windows 10 64-bit

Weighted Suite	Test Environment	Result	Remark
PCMARK 7 Scores	Intel(R) Core(TM) i7-1270PE 4.5GHz Innodisk M5S0-BGS2OCVP-K35	PASS	6565
PCMARK 8 Scores	32GB x2 (SEC 149 K4RAH086VB BCQK) Kingston SV300S37A 240GB	PASS	Work 2.0 accelerated : 2802 Work 2.0 conventional : 3946

Windows 10 64-bit

Weighted Suite	Test Environment	Result	Remark
PCMARK 7 Scores	Intel(R) Core(TM) i7-1270PE 4.5GHz Kingston KVR48S40S8-16	PASS	6844
PCMARK 8 Scores	16GBx2 (Micron 2EA45D8BNJ) Kingston SV300S37A 240GB	PASS	Work 2.0 accelerated : 2986 Work 2.0 conventional : 3938

Windows 10 64-bit

Weighted Suite	Test Environment	Result	Remark
PCMARK 7 Scores	Intel(R) Core(TM) i7-1270PE 4.5GHz Crucial CT16G48C40S5.M8A1	PASS	6962
PCMARK 8 Scores	(Micron 1YA45D8BNJ) Kingston SV300S37A 240GB	PASS	Work 2.0 accelerated : 2977 Work 2.0 conventional : 3912

i7-1265UE

Windows 10 64-bit

Weighted Suite	Test Environment	Result	Remark
PCMARK 7 Scores	Intel(R) Core(TM) i7-1265UE 4.7GHz Innodisk M5S0-BGS2OCVP-K35 32GB x2	PASS	7260
PCMARK 8 Scores	(SEC 149 K4RAH086VB BCQK) Kingston SV300S37A 240GB	PASS	Work 2.0 accelerated : 3234 Work 2.0 conventional : 4247

Windows 10 64-bit

Weighted Suite	Test Environment	Result	Remark
PCMARK 7 Scores	Intel(R) Core(TM) i7-1265UE 4.7GHz Kingston KVR48S40S8-16 16GBx2	PASS	7202
PCMARK 8 Scores	(Micron 2EA45D8BNJ) Kingston SV300S37A 240GB	PASS	Work 2.0 accelerated : 3223 Work 2.0 conventional : 4245

Windows 10 64-bit

Weighted Suite	Test Environment	Result	Remark
PCMARK 7 Scores	Intel(R) Core(TM) i7-1265UE 4.7GHz Crucial CT16G48C40S5.M8A1	PASS	7418
PCMARK 8 Scores	(Micron 1YA45D8BNJ) Kingston SV300S37A 240GB	PASS	Work 2.0 accelerated : 3212 Work 2.0 conventional : 4224

i5-1250PE

Windows 10 64-bit

Weighted Suite	Test Environment	Result	Remark
PCMARK 7 Scores	Intel(R) Core(TM) i5-1250PE 4.4GHz Innodisk M5S0-BGS2OCVP-K35 32GB x2	PASS	6256
PCMARK 8 Scores	(SEC 149 K4RAH086VB BCQK) Kingston SV300S37A 240GB	PASS	Work 2.0 accelerated : 2802 Work 2.0 conventional : 3663

Windows 10 64-bit

Weighted Suite	Test Environment	Result	Remark
PCMARK 7 Scores	Intel(R) Core(TM) i5-1250PE 4.4GHz Kingston KVR48S40S8-16 16GBx2	PASS	6376
PCMARK 8 Scores	(Micron 2EA45D8BNJ) Kingston SV300S37A 240GB	PASS	Work 2.0 accelerated : 2780 Work 2.0 conventional : 3676

Windows 10 64-bit

Weighted Suite	Test Environment	Result	Remark
PCMARK 7 Scores	Intel(R) Core(TM) i5-1250PE 4.4GHz Crucial CT16G48C40S5.M8A1	PASS	6421
PCMARK 8 Scores	(Micron 1YA45D8BNJ) Kingston SV300S37A 240GB	PASS	Work 2.0 accelerated : 2792 Work 2.0 conventional : 3666

5.5 PC MARK 10

i7-1270PE

Windows 10 64-bit

Item	Weighted Suite	Test Environment	Result	Remark
1	PCMARK10 Scores	Intel(R) Core(TM) i7-1270PE 4.5GHz Innodisk M5S0-BGS2OCVP-K35 32GB x2 (SEC 149 K4RAH086VB BCQK) Kingston SV300S37A 240GB	PASS	3721
2	Essentials		PASS	8278
3	Productivity		PASS	6049
4	Digital Content Creation		PASS	2793

Windows 10 64-bit

Item	Weighted Suite	Test Environment	Result	Remark
1	PCMARK10 Scores	Intel(R) Core(TM) i7-1270PE 4.5GHz Kingston KVR48S40S8-16 16GBx2 (Micron 2EA45D8BNJ) Kingston SV300S37A 240GB	PASS	3710
2	Essentials		PASS	8300
3	Productivity		PASS	5960
4	Digital Content Creation		PASS	2802

Windows 10 64-bit

Item	Weighted Suite	Test Environment	Result	Remark
1	PCMARK10 Scores	Intel(R) Core(TM) i7-1270PE 4.5GHz Crucial CT16G48C40S5.M8A1 (Micron 1YA45D8BNJ) Kingston SV300S37A 240GB	PASS	3594
2	Essentials		PASS	8171
3	Productivity		PASS	5933
4	Digital Content Creation		PASS	2599

i7-1265UE**Windows 10 64-bit**

Item	Weighted Suite	Test Environment	Result	Remark
1	PCMARK10 Scores	Intel(R) Core(TM) i7-1265UE 4.7GHz Innodisk M5S0-BGS2OCVP-K35 32GB x2 (SEC 149 K4RAH086VB BCQK) Kingston SV300S37A 240GB	PASS	4218
2	Essentials		PASS	9247
3	Productivity		PASS	7164
4	Digital Content Creation		PASS	3075

Windows 10 64-bit

Item	Weighted Suite	Test Environment	Result	Remark
1	PCMARK10 Scores	Intel(R) Core(TM) i7-1265UE 4.7GHz Kingston KVR48S40S8-16 16GBx2 (Micron 2EA45D8BNJ) Kingston SV300S37A 240GB	PASS	4167
2	Essentials		PASS	9146
3	Productivity		PASS	7223
4	Digital Content Creation		PASS	2972

Windows 10 64-bit

Item	Weighted Suite	Test Environment	Result	Remark
1	PCMARK10 Scores	Intel(R) Core(TM) i7-1265UE 4.7GHz Crucial CT16G48C40S5.M8A1 (Micron 1YA45D8BNJ) Kingston SV300S37A 240GB	PASS	4089
2	Essentials		PASS	9066
3	Productivity		PASS	7163
4	Digital Content Creation		PASS	2858

i5-1250PE**Windows 10 64-bit**

Item	Weighted Suite	Test Environment	Result	Remark
1	PCMARK10 Scores	Intel(R) Core(TM) i5-1250PE 4.4GHz Innodisk M5S0-BGS2OCVP-K35 32GB x2 (SEC 149 K4RAH086VB BCQK) Kingston SV300S37A 240GB	PASS	3250
2	Essentials		PASS	7569
3	Productivity		PASS	5010
4	Digital Content Creation		PASS	2459

Windows 10 64-bit

Item	Weighted Suite	Test Environment	Result	Remark
1	PCMARK10 Scores	Intel(R) Core(TM) i5-1250PE 4.4GHz Kingston KVR48S40S8-16 16GBx2 (Micron 2EA45D8BNJ) Kingston SV300S37A 240GB	PASS	3318
2	Essentials		PASS	7584
3	Productivity		PASS	5131
4	Digital Content Creation		PASS	2550

Windows 10 64-bit

Item	Weighted Suite	Test Environment	Result	Remark
1	PCMARK10 Scores	Intel(R) Core(TM) i5-1250PE 4.4GHz Crucial CT16G48C40S5.M8A1 (Micron 1YA45D8BNJ) Kingston SV300S37A 240GB	PASS	3172
2	Essentials		PASS	7553
3	Productivity		PASS	5034
4	Digital Content Creation		PASS	2280

i7-1365UE**Windows 10 64-bit**

Item	Weighted Suite	Test Environment	Result	Remark
1	PCMARK10 Scores	Intel(R) Core(TM) i7-1365UE 4.9GHz innodisk DDR5 4800 32GB*2 M5S0-BGS2OCVP-K35 (SEC 149 K4RAHDB 6V8 BCQK) Western Digital WD2500AAKS-00F0A0 250GB	PASS	3623
2	Essentials		PASS	6848
3	Productivity		PASS	5845
4	Digital Content Creation		PASS	3227

Windows 10 64-bit

Item	Weighted Suite	Test Environment	Result	Remark
1	PCMARK10 Scores	Intel(R) Core(TM) i7-1365UE 4.9GHz innodisk DDR5 4800 32GB M5S0-BGS2OCVP-K35 (SEC 149 K4RAHDB 6V8 BCQK) Western Digital WD2500AAKS-00F0A0 250GB	PASS	3600
2	Essentials		PASS	6849
3	Productivity		PASS	5785
4	Digital Content Creation		PASS	3186

Windows 10 64-bit

Item	Weighted Suite	Test Environment	Result	Remark
1	PCMARK10 Scores	Intel(R) Core(TM) i7-1365UE 4.9GHz Transcend DDR5 4800 16GB*2 JIM4800ASE-16G (SEC 149 K4RAHDB 6V8 BCQK) Western Digital WD2500AAKS-00F0A0 250GB	PASS	3546
2	Essentials		PASS	6647
3	Productivity		PASS	5677
4	Digital Content Creation		PASS	3207

Windows 10 64-bit

Item	Weighted Suite	Test Environment	Result	Remark
1	PCMARK10 Scores	Intel(R) Core(TM) i7-1365UE 4.9GHz Transcend DDR5 4800 16GB JIM4800ASE-16G (SEC 149 K4RAHDB 6V8 BCQK) Western Digital WD2500AAKS-00F0A0 250GB	PASS	3508
2	Essentials		PASS	6422
3	Productivity		PASS	5698
4	Digital Content Creation		PASS	3203

i7-1370PE

Windows 10 64-bit

Item	Weighted Suite	Test Environment	Result	Remark
1	PCMARK10 Scores	Intel(R) Core(TM) i7-1370PE 4.8GHz innodisk DDR5 4800 32GB*2 M5S0-BGS2OCVP-K35 (SEC 149 K4RAHDB 6V8 BCQK) Western Digital WD2500AAKS-00F0A0 250GB	PASS	3402
2	Essentials		PASS	6386
3	Productivity		PASS	4999
4	Digital Content Creation		PASS	3347

Windows 10 64-bit

Item	Weighted Suite	Test Environment	Result	Remark
1	PCMARK10 Scores	Intel(R) Core(TM) i7-1370PE 4.8GHz innodisk DDR5 4800 32GB M5S0-BGS2OCVP-K35 (SEC 149 K4RAHDB 6V8 BCQK) Western Digital WD2500AAKS-00F0A0 250GB	PASS	3499
2	Essentials		PASS	6309
3	Productivity		PASS	5506
4	Digital Content Creation		PASS	3349

Windows 10 64-bit

Item	Weighted Suite	Test Environment	Result	Remark
1	PCMARK10 Scores	Intel(R) Core(TM) i7-1370PE 4.8GHz Transcend DDR5 4800 16GB*2 JIM4800ASE-16G (SEC 149 K4RAHDB 6V8 BCQK) Western Digital WD2500AAKS-00F0A0 250GB	PASS	3647
2	Essentials		PASS	6756
3	Productivity		PASS	5761
4	Digital Content Creation		PASS	3384

Windows 10 64-bit

Item	Weighted Suite	Test Environment	Result	Remark
1	PCMARK10 Scores	Intel(R) Core(TM) i7-1370PE 4.8GHz Transcend DDR5 4800 16GB JIM4800ASE-16G (SEC 149 K4RAHDB 6V8 BCQK) Western Digital WD2500AAKS-00F0A0 250GB	PASS	3595
2	Essentials		PASS	6579
3	Productivity		PASS	5667
4	Digital Content Creation		PASS	3384

5.6 PerformanceTest 9.0

i7-1270PE

Windows 10 64-bit

Item	Weighted Suite	Test Environment	Result	Remark
1	PassMark Rating	Intel(R) Core(TM) i7-1270PE 4.5GHz Innodisk M5S0-BGS20CVP-K35 32GB x2 (SEC 149 K4RAH086VB BCQK) Kingston SV300S37A 240GB	PASS	3678.1
2	CPU Mark		PASS	18044.5
3	2D Graphics Mark		PASS	804.3
4	3D Graphics Mark		PASS	837.7
5	Memory Mark		PASS	2768.5
6	Disk Mark		PASS	3989.1

Windows 10 64-bit

Item	Weighted Suite	Test Environment	Result	Remark
1	PassMark Rating	Intel(R) Core(TM) i7-1270PE 4.5GHz Kingston KVR48S40S8-16 16GBx2 (Micron 2EA45D8BNJ) Kingston SV300S37A 240GB	PASS	3878.5
2	CPU Mark		PASS	19340.4
3	2D Graphics Mark		PASS	924.5
4	3D Graphics Mark		PASS	843.1
5	Memory Mark		PASS	2895.9
6	Disk Mark		PASS	3937.1

Windows 10 64-bit

Item	Weighted Suite	Test Environment	Result	Remark
1	PassMark Rating	Intel(R) Core(TM) i7-1270PE 4.5GHz Crucial CT16G48C40S5.M8A1 (Micron 1YA45D8BNJ) Kingston SV300S37A 240GB	PASS	3747.4
2	CPU Mark		PASS	18500.6
3	2D Graphics Mark		PASS	920.0
4	3D Graphics Mark		PASS	835.8
5	Memory Mark		PASS	2486.1
6	Disk Mark		PASS	3910.3

i7-1265UE

Windows 10 64-bit

Item	Weighted Suite	Test Environment	Result	Remark
1	PassMark Rating	Intel(R) Core(TM) i7-1265UE 4.7GHz Innodisk M5S0-BGS20CVP-K35 32GB x2 (SEC 149 K4RAH086VB BCQK) Kingston SV300S37A 240GB	PASS	4035.9
2	CPU Mark		PASS	16604.4
3	2D Graphics Mark		PASS	1064.8
4	3D Graphics Mark		PASS	836.4
5	Memory Mark		PASS	3444.6
6	Disk Mark		PASS	3920.5

Windows 10 64-bit

Item	Weighted Suite	Test Environment	Result	Remark
1	PassMark Rating	Intel(R) Core(TM) i7-1265UE 4.7GHz Kingston KVR48S40S8-16 16GBx2 (Micron 2EA45D8BNJ) Kingston SV300S37A 240GB	PASS	4037.7
2	CPU Mark		PASS	16660.5
3	2D Graphics Mark		PASS	1063.8
4	3D Graphics Mark		PASS	841.9
5	Memory Mark		PASS	3360.5
6	Disk Mark		PASS	3957.1

Windows 10 64-bit

Item	Weighted Suite	Test Environment	Result	Remark
1	PassMark Rating	Intel(R) Core(TM) i7-1265UE 4.7GHz Crucial CT16G48C40S5.M8A1 (Micron 1YA45D8BNJ) Kingston SV300S37A 240GB	PASS	3843.1
2	CPU Mark		PASS	15479.5
3	2D Graphics Mark		PASS	1056.1
4	3D Graphics Mark		PASS	840.8
5	Memory Mark		PASS	2876.1
6	Disk Mark		PASS	3498.1

i5-1250PE

Windows 10 64-bit

Item	Weighted Suite	Test Environment	Result	Remark
1	PassMark Rating	Intel(R) Core(TM) i5-1250PE 4.4GHz Innodisk M5S0-BGS20CVP-K35 32GB x2 (SEC 149 K4RAH086VB BCQK) Kingston SV300S37A 240GB	PASS	3362.0
2	CPU Mark		PASS	18223.1
3	2D Graphics Mark		PASS	789.0
4	3D Graphics Mark		PASS	680.0
5	Memory Mark		PASS	2672.5
6	Disk Mark		PASS	3871.4

Windows 10 64-bit

Item	Weighted Suite	Test Environment	Result	Remark
1	PassMark Rating	Intel(R) Core(TM) i5-1250PE 4.4GHz Kingston KVR48S40S8-16 16GBx2 (Micron 2EA45D8BNJ) Kingston SV300S37A 240GB	PASS	3362.1
2	CPU Mark		PASS	18156.5
3	2D Graphics Mark		PASS	792.3
4	3D Graphics Mark		PASS	682.1
5	Memory Mark		PASS	2626.7
6	Disk Mark		PASS	3892.2

Windows 10 64-bit

Item	Weighted Suite	Test Environment	Result	Remark
1	PassMark Rating	Intel(R) Core(TM) i5-1250PE 4.4GHz Crucial CT16G48C40S5.M8A1 (Micron 1YA45D8BNJ) Kingston SV300S37A 240GB	PASS	3283.7
2	CPU Mark		PASS	17023.7
3	2D Graphics Mark		PASS	793.7
4	3D Graphics Mark		PASS	673.8
5	Memory Mark		PASS	2358.9
6	Disk Mark		PASS	4017.7

5.7 Geekbench 5

i7-1270PE

Test Environment
Intel(R) Core(TM) i7-1270PE 4.5GHz Innodisk M5S0-BGS2OCVP-K35 32GBx2 (SEC 149 K4RAH086VB BCQK) Kingston SV300S37A 240GB

Windows 10 64-bit

Item	Weighted Suite		Result	Remark
1	Run CPU Benchmark Score	Single-core	PASS	1080
		Multi-core		8140
2	Run Compute Benchmark (OpenCL Score)		PASS	4809

Test Environment
Intel(R) Core(TM) i7-1270PE 4.5GHz Kingston KVR48S40S8-16 16GB x2 (Micron 2EA45D8BNJ) Kingston SV300S37A 240GB

Windows 10 64-bit

Item	Weighted Suite		Result	Remark
1	Run CPU Benchmark Score	Single-core	PASS	1219
		Multi-core		7915
2	Run Compute Benchmark (OpenCL Score)		PASS	4808

Test Environment
Intel(R) Core(TM) i7-1270PE 4.5GHz Crucial CT16G48C40S5.M8A1(Micron 1YA45D8BNJ) Kingston SV300S37A 240GB

Windows 10 64-bit

Item	Weighted Suite		Result	Remark
1	Run CPU Benchmark Score	Single-core	PASS	1246
		Multi-core		7019
2	Run Compute Benchmark (OpenCL Score)		PASS	4757

i7-1265UE

Test Environment
Intel(R) Core(TM) i7-1265UE 4.7GHz Innodisk M5S0-BGS2OCVP-K35 32GBx2 (SEC 149 K4RAH086VB BCQK) Kingston SV300S37A 240GB

Windows 10 64-bit

Item	Weighted Suite		Result	Remark
1	Run CPU Benchmark Score	Single-core	PASS	1568
		Multi-core		5959
2	Run Compute Benchmark (OpenCL Score)		PASS	4784

Test Environment
Intel(R) Core(TM) i7-1265UE 4.7GHz Kingston KVR48S40S8-16 16GB x2 (Micron 2EA45D8BNJ) Kingston SV300S37A 240GB

Windows 10 64-bit

Item	Weighted Suite		Result	Remark
1	Run CPU Benchmark Score	Single-core	PASS	1565
		Multi-core		6696
2	Run Compute Benchmark (OpenCL Score)		PASS	4781

Test Environment
Intel(R) Core(TM) i7-1265UE 4.7GHz Crucial CT16G48C40S5.M8A1(Micron 1YA45D8BNJ) Kingston SV300S37A 240GB

Windows 10 64-bit

Item	Weighted Suite		Result	Remark
1	Run CPU Benchmark Score	Single-core	PASS	1468
		Multi-core		5209
2	Run Compute Benchmark (OpenCL Score)		PASS	4802

i5-1250PE

Test Environment
Intel(R) Core(TM) i5-1250PE 4.4GHz Innodisk M5S0-BGS2OCVP-K35 32GBx2 (SEC 149 K4RAH086VB BCQK) Kingston SV300S37A 240GB

Windows 10 64-bit

Item	Weighted Suite	Result	Remark
1	Run CPU Benchmark	PASS	1080
	Score		8352
2	Run Compute Benchmark (OpenCL Score)	PASS	3798

Test Environment
Intel(R) Core(TM) i5-1250PE 4.4GHz Kingston KVR48S40S8-16 16GB x2 (Micron 2EA45D8BNJ) Kingston SV300S37A 240GB

Windows 10 64-bit

Item	Weighted Suite	Result	Remark
1	Run CPU Benchmark	PASS	1052
	Score		8197
2	Run Compute Benchmark (OpenCL Score)	PASS	3772

Test Environment
Intel(R) Core(TM) i5-1250PE 4.4GHz Crucial CT16G48C40S5.M8A1(Micron 1YA45D8BNJ) Kingston SV300S37A 240GB

Windows 10 64-bit

Item	Weighted Suite		Result	Remark
1	Run CPU Benchmark Score	Single-core	PASS	1048
		Multi-core		7107
2	Run Compute Benchmark (OpenCL Score)		PASS	3768

5.8 Geekbench 6

i7-1365UE

Test Environment
Intel(R) Core(TM) i7-1365UE 4.9GHz innodisk DDR5 4800 32GB*2 M5S0-BGS2OCVP-K35 (SEC 149 K4RAHDB 6V8 BCQK) Western Digital WD2500AAKS-00F0A0 250GB

Windows 10 64-bit

Item	Weighted Suite		Result	Remark
1	Run CPU Benchmark Score	Single-core	PASS	2328
		Multi-core		8024
2	Run Compute Benchmark (OpenCL Score)		PASS	3639

Test Environment
Intel(R) Core(TM) i7-1365UE 4.9GHz innodisk DDR5 4800 32GB M5S0-BGS2OCVP-K35 (SEC 149 K4RAHDB 6V8 BCQK) Western Digital WD2500AAKS-00F0A0 250GB

Windows 10 64-bit

Item	Weighted Suite		Result	Remark
1	Run CPU Benchmark Score	Single-core	PASS	2265
		Multi-core		7311
2	Run Compute Benchmark (OpenCL Score)		PASS	3659

Test Environment
Intel(R) Core(TM) i7-1365UE 4.9GHz Transcend DDR5 4800 16GB*2 JIM4800ASE-16G (SEC 149 K4RAHDB 6V8 BCQK) Western Digital WD2500AAKS-00F0A0 250GB

Windows 10 64-bit

Item	Weighted Suite		Result	Remark
1	Run CPU Benchmark Score	Single-core	PASS	2328
		Multi-core		8024
2	Run Compute Benchmark (OpenCL Score)		PASS	3639

Test Environment
Intel(R) Core(TM) i7-1365UE 4.9GHz Transcend DDR5 4800 16GB JIM4800ASE-16G (SEC 149 K4RAHDB 6V8 BCQK) Western Digital WD2500AAKS-00F0A0 250GB

Windows 10 64-bit

Item	Weighted Suite		Result	Remark
1	Run CPU Benchmark Score	Single-core	PASS	2277
		Multi-core		7201
2	Run Compute Benchmark (OpenCL Score)		PASS	3660

i7-1370PE

Test Environment
Intel(R) Core(TM) i7-1370PE 4.8GHz innodisk DDR5 4800 32GB*2 M5S0-BGS2OCVP-K35 (SEC 149 K4RAHDB 6V8 BCQK) Western Digital WD2500AAKS-00F0A0 250GB

Windows 10 64-bit

Item	Weighted Suite		Result	Remark
1	Run CPU Benchmark Score	Single-core	PASS	2132
		Multi-core		11389
2	Run Compute Benchmark (OpenCL Score)		PASS	3668

Test Environment
Intel(R) Core(TM) i7-1370PE 4.8GHz innodisk DDR5 4800 32GB M5S0-BGS2OCVP-K35 (SEC 149 K4RAHDB 6V8 BCQK) Western Digital WD2500AAKS-00F0A0 250GB

Windows 10 64-bit

Item	Weighted Suite		Result	Remark
1	Run CPU Benchmark Score	Single-core	PASS	2116
		Multi-core		9916
2	Run Compute Benchmark (OpenCL Score)		PASS	3644

Test Environment
Intel(R) Core(TM) i7-1370PE 4.8GHz Transcend DDR5 4800 16GB*2 JIM4800ASE-16G (SEC 149 K4RAHDB 6V8 BCQK) Western Digital WD2500AAKS-00F0A0 250GB

Windows 10 64-bit

Item	Weighted Suite		Result	Remark
1	Run CPU Benchmark Score	Single-core	PASS	2126
		Multi-core		11300
2	Run Compute Benchmark (OpenCL Score)		PASS	3669

Test Environment
Intel(R) Core(TM) i7-1370PE 4.8GHz Transcend DDR5 4800 16GB JIM4800ASE-16G (SEC 149 K4RAHDB 6V8 BCQK) Western Digital WD2500AAKS-00F0A0 250GB

Windows 10 64-bit

Item	Weighted Suite		Result	Remark
1	Run CPU Benchmark Score	Single-core	PASS	2109
		Multi-core		9723
2	Run Compute Benchmark (OpenCL Score)		PASS	3644

5.9 Cinebench 11.5

i7-1365UE

Test Environment
Intel(R) Core(TM) i7-1365UE 4.9GHz innodisk DDR5 4800 32GB*2 M5S0-BGS2OCVP-K35 (SEC 149 K4RAHDB 6V8 BCQK) Western Digital WD2500AAKS-00F0A0 250GB

Windows 10 64-bit

Item	Weighted Suite	Result	Remark
1	OpenGL	PASS	43.56 fps
2	CPU	PASS	11.23 pts

Test Environment
Intel(R) Core(TM) i7-1365UE 4.9GHz innodisk DDR5 4800 32GB M5S0-BGS2OCVP-K35 (SEC 149 K4RAHDB 6V8 BCQK) Western Digital WD2500AAKS-00F0A0 250GB

Windows 10 64-bit

Item	Weighted Suite	Result	Remark
1	OpenGL	PASS	44.35 fps
2	CPU	PASS	11.03 pts

Test Environment
Intel(R) Core(TM) i7-1365UE 4.9GHz Transcend DDR5 4800 16GB*2 JIM4800ASE-16G (SEC 149 K4RAHDB 6V8 BCQK) Western Digital WD2500AAKS-00F0A0 250GB

Windows 10 64-bit

Item	Weighted Suite	Result	Remark
1	OpenGL	PASS	43.44 fps
2	CPU	PASS	11.45 pts

Test Environment
Intel(R) Core(TM) i7-1365UE 4.9GHz Transcend DDR5 4800 16GB JIM4800ASE-16G (SEC 149 K4RAHDB 6V8 BCQK) Western Digital WD2500AAKS-00F0A0 250GB

Windows 10 64-bit

Item	Weighted Suite	Result	Remark
1	OpenGL	PASS	43.37 fps
2	CPU	PASS	12.06 pts

i7-1370PE

Test Environment
Intel(R) Core(TM) i7-1370PE 4.8GHz innodisk DDR5 4800 32GB*2 M5S0-BGS2OCVP-K35 (SEC 149 K4RAHDB 6V8 BCQK) Western Digital WD2500AAKS-00F0A0 250GB

Windows 10 64-bit

Item	Weighted Suite	Result	Remark
1	OpenGL	PASS	43.51 fps
2	CPU	PASS	18.80 pts

Test Environment
Intel(R) Core(TM) i7-1370PE 4.8GHz innodisk DDR5 4800 32GB M5S0-BGS2OCVP-K35 (SEC 149 K4RAHDB 6V8 BCQK) Western Digital WD2500AAKS-00F0A0 250GB

Windows 10 64-bit

Item	Weighted Suite	Result	Remark
1	OpenGL	PASS	43.42 fps
2	CPU	PASS	18.99 pts

Test Environment
Intel(R) Core(TM) i7-1370PE 4.8GHz Transcend DDR5 4800 16GB*2 JIM4800ASE-16G (SEC 149 K4RAHDB 6V8 BCQK) Western Digital WD2500AAKS-00F0A0 250GB

Windows 10 64-bit

Item	Weighted Suite	Result	Remark
1	OpenGL	PASS	43.57 fps
2	CPU	PASS	19.17 pts

Test Environment
Intel(R) Core(TM) i7-1370PE 4.8GHz Transcend DDR5 4800 16GB JIM4800ASE-16G (SEC 149 K4RAHDB 6V8 BCQK) Western Digital WD2500AAKS-00F0A0 250GB

Windows 10 64-bit

Item	Weighted Suite	Result	Remark
1	OpenGL	PASS	43.47 fps
2	CPU	PASS	18.67 pts

5.10 Cinebench R23

i7-1270PE

Test Environment
Intel(R) Core(TM) i7-1270PE 4.5GHz Innodisk M5S0-BGS2OCVP-K35 32GBx2 (SEC 149 K4RAH086VB BCQK) SPCC S55 Silicon Power SSD 120GB(MSIP-REM-SLL-S55)

Windows 10 64-bit

Item	Weighted Suite	Result	Remark
1	CPU(Multi Core)	PASS	9469 pts
2	CPU(Single Core)	PASS	1053 pts
3	MP Ratio	PASS	8.99 x

Test Environment
Intel(R) Core(TM) i7-1270PE 4.5GHz Kingston KVR48S40S8-16 16GB x2 (Micron 2EA45D8BNJ) SPCC S55 Silicon Power SSD 120GB(MSIP-REM-SLL-S55)

Windows 10 64-bit

Item	Weighted Suite	Result	Remark
1	CPU(Multi Core)	PASS	9274 pts
2	CPU(Single Core)	PASS	1229 pts
3	MP Ratio	PASS	7.55 X

Test Environment
Intel(R) Core(TM) i7-1270PE 4.5GHz Crucial CT16G48C40S5.M8A1(Micron 1YA45D8BNJ) Kingston SV300S37A 240GB

Windows 10 64-bit

Item	Weighted Suite	Result	Remark
1	CPU(Multi Core)	PASS	9555 pts
2	CPU(Single Core)	PASS	1275 pts
3	MP Ratio	PASS	7.50 x

i7-1265UE

Test Environment
Intel(R) Core(TM) i7-1265UE 4.7GHz Innodisk M5S0-BGS2OCVP-K35 32GBx2 (SEC 149 K4RAH086VB BCQK) Kingston SV300S37A 240GB

Windows 10 64-bit

Item	Weighted Suite	Result	Remark
1	CPU(Multi Core)	PASS	6058 pts
2	CPU(Single Core)	PASS	1527 pts
3	MP Ratio	PASS	3.97 x

Test Environment
Intel(R) Core(TM) i7-1265UE 4.7GHz Kingston KVR48S40S8-16 16GB x2 (Micron 2EA45D8BNJ) Kingston SV300S37A 240GB

Windows 10 64-bit

Item	Weighted Suite	Result	Remark
1	CPU(Multi Core)	PASS	6034 pts
2	CPU(Single Core)	PASS	1507 pts
3	MP Ratio	PASS	4.00 x

Test Environment
Intel(R) Core(TM) i7-1265UE 4.7GHz Crucial CT16G48C40S5.M8A1(Micron 1YA45D8BNJ) Kingston SV300S37A 240GB

Windows 10 64-bit

Item	Weighted Suite	Result	Remark
1	CPU(Multi Core)	PASS	6139 pts
2	CPU(Single Core)	PASS	1540 pts
3	MP Ratio	PASS	3.99 x

i5-1250PE

Test Environment
Intel(R) Core(TM) i5-1250PE 4.4GHz Innodisk M5S0-BGS2OCVP-K35 32GBx2 (SEC 149 K4RAH086VB BCQK) SPCC S55 Silicon Power SSD 120GB(MSIP-REM-SLL-S55)

Windows 10 64-bit

Item	Weighted Suite	Result	Remark
1	CPU(Multi Core)	PASS	9553 pts
2	CPU(Single Core)	PASS	1406 pts
3	MP Ratio	PASS	9.13 x

Test Environment
Intel(R) Core(TM) i5-1250PE 4.4GHz Kingston KVR48S40S8-16 16GB x2 (Micron 2EA45D8BNJ) SPCC S55 Silicon Power SSD 120GB(MSIP-REM-SLL-S55)

Windows 10 64-bit

Item	Weighted Suite	Result	Remark
1	CPU(Multi Core)	PASS	9528 pts
2	CPU(Single Core)	PASS	1043 pts
3	MP Ratio	PASS	9.13 x

Test Environment
Intel(R) Core(TM) i5-1250PE 4.4GHz Crucial CT16G48C40S5.M8A1(Micron 1YA45D8BNJ) Kingston SV300S37A 240GB

Windows 10 64-bit

Item	Weighted Suite	Result	Remark
1	CPU(Multi Core)	PASS	9513 pts
2	CPU(Single Core)	PASS	1045 pts
3	MP Ratio	PASS	9.10 x

5.11 Storage Performance

5.11.1 HDD

Test environment:

OS Windows 10 64bit

Program: HD Tune

HDD Model	Interface	Capacity	Average	Burst Rate	Access Time
Kingston SV300S37A	SSD	240 GB	316.1 MB/sec	309.4 MB/sec	0.148 ms
Kingston DT100G3/64G	USB	64 GB	66.7 MB/sec	69.1 MB/sec	0.390 ms
ADATA UV128/16GB	USB	16 GB	111.7 MB/sec	63.4 MB/sec	0.877 ms
Kingston DT HyperX 3.0	USB 3.0	64 GB	220.1 MB/sec	84.9 MB/sec	0.5 ms
Western Digital WD800BEVS-16VAT0	HDD	80 GB	51.7 MB/sec	76.0 MB/sec	16.6 ms
Western Digital WD2500AAKS-00F0A0	HDD	250 GB	86.2 MB/sec	118.7 MB/sec	12.9 ms
Western Digital WD3200AAKS-00B3A0	HDD	320 GB	93.9 MB/sec	114.7 MB/sec	16.0 ms

5.11.2 DVD-ROM

Test environment:

OS Windows 10 64bit

Program (NERO)

DVD-ROM Model	Interface	Average Speed	Full Read	Burst Rate	DVD
Transcend DVD TS8XDVDS-K	USB	5.60 x	195 ms	20 MB/s	1 – 16 x
LITEON DVD eTAU108	USB	5.60 x	137 ms	25 MB/s	1 – 16 x
LITEON iHES312	SATA	10.12 x	149 ms	43 MB/s	1 – 16 x
ASUS DRW-24D1ST	SATA	10.19 x	205 ms	40 MB/s	1 – 16 x
ASUS DRW-1814BLT	SATA	7.61 x	163 ms	47 MB/s	1 – 16 x
LG GH20NS15	SATA	10.29 x	157 ms	23 MB/s	1 – 16 x
PIONEER DVD DVR-S19LBK	SATA	10.31 x	191 ms	53 MB/s	1 – 16 x