

LS-371

Test Report

Edition 1.2

2007/11/05



Identify: Gary

Test Engineer: Les

Index

Index	2
1. Function test	4
1.1 Hardware function	4
1.2 BIOS function	6
1.3 Driver	8
2. Compatibility test.....	9
2.1 CPU Test	9
2.2 Memory Test.....	10
2.3 VGA Graphic Test.....	11
2.4 Audio Test.....	13
2.5 HDD Test	15
2.6 CD-ROM Test	16
2.7 USB Test	17
2.8 Serial Port Test.....	19
2.9 Keyboard 、 Mouse Test.....	21
2.10 LAN Test.....	23
2.11 Power Supply Test.....	24
2.12 Boot Up Test.....	26
2.13 Os Install	26
3. Environmental test.....	27
3.1 Temperature Test.....	27
4. Reliability Test.....	29
4.1 Power Consumption Test	29
4.2 Thermal measurements at various points on the board.....	34
5. Performance Test.....	35
5.1-1 WinBench 99 Version 1.1.....	35
5.1-2 WinBench 99 Version 1.2.....	37

5.2 Business Win Stone	38
5.3 Content Creation Winstone	39
5.4 3D MARK	40
5.5 3D MARK2006	43
5.6 PC MARK2002	44
5.7 PC MARK2004	45
5.8 PC MARK2005	46

1. Function test

1.1 Hardware function

Base Function Test

1	Power Button	Pass
2	Reset	Pass
3	Power LED	Pass
4	IDE LED	Pass
5	IDE Primary Master	Pass
6	IDE Primary Slave	Pass
7	COM Port	Pass
8	DIMM	Pass
9	VGA Port	Pass
10	Keyboard	Pass
11	Mouse	Pass
12	AUDIO	Pass
13	LAN Port	Pass
14	USB Port	Pass
15	SATA1/2	Pass
16	CPUFAN	Pass
17	SYSFAN	Pass
18	CDIN	Pass
19	CF Card	Pass
20	MINPCI	Pass

21	LVDS	Pass
22	IrDA	Pass
23	HDTV	Pass
24	GPIO	Pass
25	DVI	Pass
26	DC_OUT	Pass

2.0 PITCH (DIP)

1	JRTC	Pass
2	JVLCD	Pass
3	JAT	Pass
4	JCFSEL 1/2	Pass

1.2 BIOS function

Item	Description	Result	Remark
1	Press 'Del' to run Setup Utility	Pass	
2	Ctrl-Alt-Del – Soft-Reboot	Pass	
3	Save & Exit Setup	Pass	
4	Date & Time Setting	Pass	
5	Hard Disk Boot Priority	Pass	
6	Quick Power On Self Test	Pass	
7	On Chip Frame Buffer Size	Pass	
8	Boot Display	Pass	
9	On Chip Primary IDE	Pass	
10	On Chip Serial ATA	Pass	
11	USB 1.1 Controller	Pass	
12	USB 2.0 Controller	Pass	
13	USB Keyboard Support	Pass	
14	AC97 Audio	Pass	
15	Onboard LAN Controller	Pass	
16	PWRON After PWR-Fail	Pass	
17	Watch Dog Timer Select	Pass	

18	ACPI Function	Pass	
19	ACPI Suspend Type	Pass	
20	Soft-Off by PWRBTN	Pass	
21	Resume by Alarm	Pass	
22	CPU Warning Temperature	Pass	
23	Power On by Ring	Pass	
24	Onboard Lan Boot ROM	Pass	
25	POWER ON Function	Pass	

1.3 Driver

1. Windows XP chi Driver Test

Item	Description	Result	Remark
1	Chipset Driver	Pass	
2	VGA Driver	Pass	
3	Audio Driver	Pass	
4	LAN Driver	Pass	

2. Windows Server 2003 Driver Test

Item	Description	Result	Remark
1	Chipset Driver	Pass	
2	VGA Driver	Pass	
3	Audio Driver	Pass	
4	LAN Driver	Pass	

3. Windows XP eng Driver Test

Item	Description	Result	Remark
1	Chipset Driver	Pass	
2	VGA Driver	Pass	
3	Audio Driver	Pass	
4	LAN Driver	Pass	

4. Windows Vista Driver Test

Item	Description	Result	Remark
1	Chipset Driver	Pass	
2	VGA Driver	Pass	
3	Audio Driver	Pass	
4	LAN Driver	Pass	

2. Compatibility test

2.1 CPU Test

CPU	Operating System	Result	Remark
Genuine Intel(R) T5600 /2M/1.83GHZ	Windows XP chi	Pass	
	Windows XP eng	Pass	
	Windows XP Vista	Pass	
	Windows Server 2003	Pass	
Genuine Intel(R) T2300 /2M/1.66GHZ	Suse 10.1	Pass	
	Windows XP chi	Pass	
	Windows XP eng	Pass	
	Windows XP Vista	Pass	
Intel Celeron 430 /1M/ 1.73 GHZ	Windows Server 2003	Pass	
	Suse 10.1	Pass	
	Windows XP chi	Pass	
	Windows XP eng	Pass	
Genuine Intel(R) T1400 /2M/1.83 GHZ	Windows XP Vista	Pass	
	Windows Server 2003	Pass	
	Suse 10.1	Pass	
	Windows XP chi	Pass	
Genuine Intel(R) T1400 /2M/1.83 GHZ	Windows XP eng	Pass	
	Windows XP Vista	Pass	
	Windows Server 2003	Pass	
	Suse 10.1	Pass	

2.2 Memory Test

DDR2 SO-DIMM SDRAM	DDR2 Freq	Capacity Mbytes	Operating System	Result
Kingston (HY5PS12821B)	DDR2 533	1GB	Win XP chi Win XP eng Win Vista Win 2003 Suse 10.1	PASS
GREENCOM (E5108AE-6E-E)	DDR2 667	1GB	Win XP chi Win XP eng Win Vista Win 2003 Suse 10.1	PASS
AMOS (AD2536408-5)	DDR2 533	512MB	Win XP chi Win XP eng Win Vista Win 2003 Suse 10.1	PASS

2.3 VGA Graphic Test

1. Windows XP chi

Item	Description	Result	Remark
1	Resolution/Color Change	Pass	
2	CRT Display Test	Pass	
3	CRT Display Quality Test	Pass	
4	LVDS Display Test	Pass	
5	Extended Display Test	Pass	

2. Windows XP eng

Item	Description	Result	Remark
1	Resolution/Color Change	Pass	
2	CRT Display Test	Pass	
3	CRT Display Quality Test	Pass	
4	LVDS Display Test	Pass	
5	Extended Display Test	Pass	

3.Windows Server 2003

Item	Description	Result	Remark
1	Resolution/Color Change	Pass	
2	CRT Display Test	Pass	
3	CRT Display Quality Test	Pass	
4	LVDS Display Test	Pass	
5	Extended Display Test	Pass	

4. Windows Vista

Item	Description	Result	Remark
1	Resolution/Color Change	Pass	
2	CRT Display Test	Pass	
3	CRT Display Quality Test	Pass	
4	LVDS Display Test	Pass	
5	Extended Display Test	Pass	

2.4 Audio Test

1. Windows XP cht

Item	Description	Result	Remark
1	Sound Effect	Pass	
2	Equalizer	Pass	
3	Microphone	Pass	
4	5.1 channel test	Pass	

2. Windows XP eng

Item	Description	Result	Remark
1	Sound Effect	Pass	
2	Equalizer	Pass	
3	Microphone	Pass	
4	5.1 channel test	Pass	

3. Windows server 2003

Item	Description	Result	Remark
1	Sound Effect	Pass	
2	Equalizer	Pass	
3	Microphone	Pass	
4	5.1 channel test	Pass	

4. Windows Vista

Item	Description	Result	Remark
1	Sound Effect	Pass	
2	Equalizer	Pass	
3	Microphone	Pass	

4	5.1 channel test	Pass	
---	------------------	------	--

2.5 HDD Test

HDD Type	Operating System	HDD Size Detect	HDD Data Transfer	HDD LED Check
Seagate Brracuda ATAIV 40GB	MS-DOS Win 2003 Win Xp eng Win XP chi Win Vista Suse 10.1	PASS	PASS	PASS
WD3000JS-22PDB0 300.0GB		PASS	PASS	PASS
Maxtor 4A160J0 160GB		PASS	PASS	PASS
WD1600JS-00MHB0 160.0GB (Serial ATA)		PASS	PASS	PASS
WD2500JB-00REA0 250.0GB		PASS	PASS	PASS

2.6 CD-ROM Test

CD-ROM Type	Operating System	CD-ROM Detect	CD-ROM Data Transfer	PLAY DVD
SYNNEX COM-5216	MS-DOS Win 2003 Win Xp eng Win XP chi Win Vista Suse 10.1	PASS	PASS	PASS
BenQ CB523C		PASS	PASS	PASS
FCC CD-A52T		PASS	PASS	
TEAC CD-540E		PASS	PASS	

2.7 USB Test

1. Windows XP chi

Item	Description	Result	Remark
1	Device Manager Check	Pass	
2	External USB Keyboard Test	Pass	
3	External USB Mouse Test	Pass	
4	Hot plugging test	Pass	

2 Windows XP eng

Item	Description	Result	Remark
1	Device Manager Check	Pass	
2	External USB Keyboard Test	Pass	
3	External USB Mouse Test	Pass	
4	Hot plugging test	Pass	

3 Windows Server 2003

Item	Description	Result	Remark
1	Device Manager Check	Pass	
2	External USB Keyboard Test	Pass	
3	External USB Mouse Test	Pass	
4	Hot plugging test	Pass	

4 Suse 10.1

Item	Description	Result	Remark
1	Device Manager Check	Pass	
2	External USB Keyboard Test	Pass	
3	External USB Mouse Test	Pass	
4	Hot plugging test	Pass	

5. Windows Vista

Item	Description	Result	Remark
1	Device Manager Check	Pass	
2	External USB Keyboard Test	Pass	
3	External USB Mouse Test	Pass	
4	Hot plugging test	Pass	

2.8 Serial Port Test

1. MS-DOS

Item	Description	Result	Remark
1	RS-232 Mouse Test	Pass	
2	RS-232 Modem Test	Pass	
3	B&B Electronics COM Port RS-232 Test (W/Loop-Back)	Pass	
4	PC CHECK COM Port RS-232 Test (W/Loop-Back)	Pass	

2. Windows Server 2003

Item	Description	Result	Remark
1	Device Manager Check	Pass	
2	RS-232 Mouse Test	Pass	
3	RS-232 Modem Test	Pass	

3. Windows XP chi

Item	Description	Result	Remark
1	Device Manager Check	Pass	
2	RS-232 Mouse Test	Pass	
3	RS-232 Modem Test	Pass	

4. Windows XP eng

Item	Description	Result	Remark
1	Device Manager Check	Pass	
2	RS-232 Mouse Test	Pass	
3	RS-232 Modem Test	Pass	

5. Windows Vista

Item	Description	Result	Remark
1	Device Manager Check	Pass	
2	RS-232 Mouse Test	Pass	
3	RS-232 Modem Test	Pass	

2.9 Keyboard 、 Mouse Test

1. MS-DOS

Item	Description	Result	Remark
1	Keyboard LED Status Test	Pass	
2	Keyboard Typing Test	Pass	

2. Windows XP chi

Item	Description	Result	Remark
1	Device Manager Check	Pass	
2	Keyboard Typing Test	Pass	
3	Mouse Detect Test	Pass	

3. Windows XP eng

Item	Description	Result	Remark
1	Device Manager Check	Pass	
2	Keyboard Typing Test	Pass	
3	Mouse Detect Test	Pass	

4. Windows Server 2003

Item	Description	Result	Remark
1	Device Manager Check	Pass	
2	Keyboard Typing Test	Pass	
3	Mouse Detect Test	Pass	

5. Suse 10.1

Item	Description	Result	Remark
1	Device Manager Check	Pass	
2	Keyboard Typing Test	Pass	
3	Mouse Detect Test	Pass	

6. Windows Vista

Item	Description	Result	Remark
1	Device Manager Check	Pass	
2	Keyboard Typing Test	Pass	
3	Mouse Detect Test	Pass	

2.10 LAN Test

1. Windows XP chi

Item	Description	Result	Remark
1	Device Manager Check	Pass	
2	Data Transfer Test	Pass	

2. Windows XP eng

Item	Description	Result	Remark
1	Device Manager Check	Pass	
2	Data Transfer Test	Pass	

3. Windows Server 2003

Item	Description	Result	Remark
1	Device Manager Check	Pass	
2	Data Transfer Test	Pass	

4. Suse 10.1

Item	Description	Result	Remark
1	Device Manager Check	Pass	
2	Data Transfer Test	Pass	

5. Windows XP Vista

Item	Description	Result	Remark
1	Device Manager Check	Pass	
2	Data Transfer Test	Pass	

2.11 Power Supply Test

1. MS-DOS 6.22

Item	Description	Verification	
		Result	Remark
1	ATX Power On/Off	Pass	CWT-300ATX12(PFC) 300W
2	ATX Power On/Off	Pass	LI SHIN 0227B19120 120W
3	ATX Power On/Off	Pass	Hec Windmill PRO 315W
4	ATX Power On/Off	Pass	A Open FSP300-60ATV 300W

2. Windows XP chi

Item	Description	Verification	
		Result	Remark
1	ATX Power On/Off	Pass	CWT-300ATX12(PFC) 300W
2	ATX Power On/Off	Pass	LI SHIN 0227B19120 120W
3	ATX Power On/Off	Pass	Hec Windmill PRO 315W
4	ATX Power On/Off	Pass	A Open FSP300-60ATV 300W

3 Windows XP eng

Item	Description	Verification	
		Result	Remark
1	ATX Power On/Off	Pass	CWT-300ATX12(PFC) 300W
2	ATX Power On/Off	Pass	LI SHIN 0227B19120 120W
3	ATX Power On/Off	Pass	Hec Windmill PRO 315W
4	ATX Power On/Off	Pass	A Open FSP300-60ATV 300W

4 Windows Server 2003

Item	Description	Verification	
		Result	Remark
1	ATX Power On/Off	Pass	CWT-300ATX12(PFC) 300W
2	ATX Power On/Off	Pass	LI SHIN 0227B19120 120W

3	ATX Power On/Off	Pass	Hec Windmill PRO 315W
4	ATX Power On/Off	Pass	A Open FSP300-60ATV 300W

5 Suse 10.1

Item	Description	Verification	
		Result	Remark
1	ATX Power On/Off	Pass	CWT-300ATX12(PFC) 300W
2	ATX Power On/Off	Pass	LI SHIN 0227B19120 120W
3	ATX Power On/Off	Pass	Hec Windmill PRO 315W
4	ATX Power On/Off	Pass	A Open FSP300-60ATV 300W

6 Windows XP Vista

Item	Description	Verification	
		Result	Remark
1	ATX Power On/Off	Pass	CWT-300ATX12(PFC) 300W
2	ATX Power On/Off	Pass	LI SHIN 0227B19120 120W
3	ATX Power On/Off	Pass	Hec Windmill PRO 315W
4	ATX Power On/Off	Pass	A Open FSP300-60ATV 300W

2.12 Boot Up Test

Item	Description	Result	Remark
1	Soft boot from HDD	Pass	
2	Soft boot from CD-ROM	Pass	
3	Reboot test with Win XP chi	Pass	
4	Reboot test with Win XP eng	Pass	
5	Reboot test with Win 2003	Pass	
6	Reboot test with Win Vista	Pass	

2.13 Os Install

Item	Description	Result	Remark
1	Windows Server 2003	Pass	
2	Windows XP chi	Pass	
3	Windows XP eng	Pass	
4	Windows XP Vista	Pass	

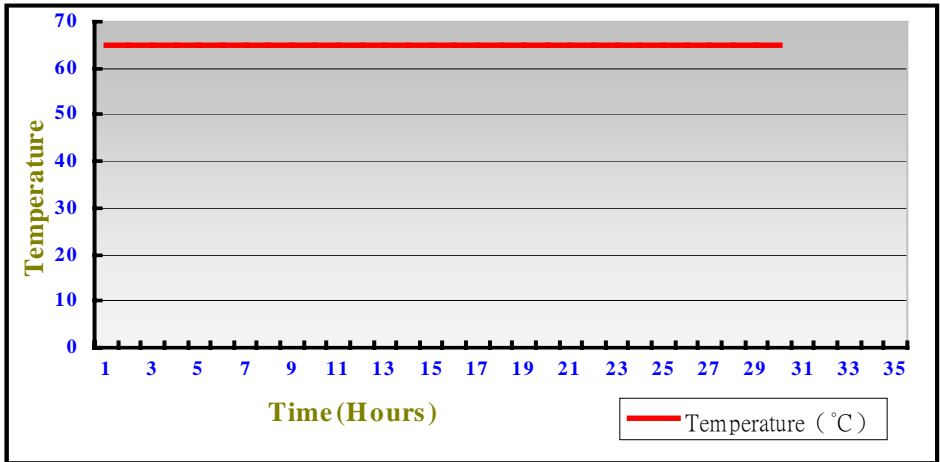
3. Environmental test

3.1 Temperature Test

Hardware Device list:

System Board	LS-371
CPU	Genuine Intel(R) T5600 /2M/1.83GHZ
Memory	AMOS(AD2536408-5) DDR2 533 512MB
HDD	Seagate Brracuda ATAIV 40GB
Operating OS	Windows XP
Test Equipment	THERMOTRON 2800 Programmer/Controller
Test Program	3Dmark 2003

Test Result:



Boot Up Test:

Temperature	Result	Remark
-20°C	Pass	Times

70°C	Pass	Times
-------------	-------------	--------------

4. Reliability Test

4.1 Power Consumption Test

1. Test Environment:

Motherboard	LS-371
CPU	Intel Celeron 420 /1M/ 1.73 GHZ
Memory	Kingston DDR2 533 1GB

Voltage	Current (A)	Power (W)	Remark
12V	2.93	35.16	Boot Up

2. Test Environment:

Motherboard	LS-371
CPU	Genuine Intel(R) T2300 /2M/1.66GHZ
Memory	Kingston DDR2 533 1GB

Voltage	Current (A)	Power (W)	Remark
12V	3.31	39.72	Boot Up

3. Test Environment:

Motherboard	LS-371
CPU	Intel Celeron 420 /1M/ 1.73 GHZ
Memory	Kingston DDR2 533 1GB (HY5PS12821B)
HDD	WD2500JB-00REA0 250.0GB
CD-ROM	BenQ CB523C
Operating System	Windows XP chi
Test Program	3Dmark 2003

Voltage	Current (A)	Power (W)	Remark
12V	3.05	36.6	

4. Test Environment:

Motherboard	LS-371
CPU	Intel Celeron 420 /1M/ 1.73 GHZ
Memory	Kingston DDR2 533 1GB (HY5PS12821B)
HDD	WD2500JB-00REA0 250.0GB
CDROM	BenQ CB523C
Display	LG.Philips LM170E01
Operating System	Windows XP chi
Test Program	3Dmark 2003

Voltage	Current (A)	Power (W)	Remark
12V	5.07	60.84	

5. Test Environment:

Motherboard	LS-371
CPU	Genuine Intel(R) T2300 /2M/1.66GHZ
Memory	AMOS(AD2536408-5)533 512MB
HDD	WD2500JB-00REA0 250.0GB WD1600JS-00MHB0 160.0GB(Serial ATA)
CDROM	BenQ CB523C
Display	LG.Philips LM170E01
Operating System	Windows XP chi
Test Program	3Dmark 2003

Voltage	Current (A)	Power (W)	Remark
12V	6.41	76.92	

6. Test Environment:

Motherboard	LS-371
CPU	Intel(R) Core 2 Duo T7600 /2M/2.33GHZ
Memory	Kingston DDR2 533 1GB

Voltage	Current (A)	Power (W)	Remark
12V	4.18	50.16	Boot Up

7. Test Environment:

Motherboard	LS-371
CPU	Intel(R) Core 2 Duo T7600 /2M/2.33GHZ
Memory	Kingston DDR2 533 1GB (HY5PS12821B)
HDD	Seagate ST340016A 40GB
CD-ROM	Behavior DVD ROM
Operating System	Windows XP Eng
Test Program	3Dmark 2003

Voltage	Current (A)	Power (W)	Remark
12V	4.88	58.56	

8. Test Environment:

Motherboard	LS-371
CPU	Intel(R) Core 2 Duo T7600 /2M/2.33GHZ
Memory	Kingston DDR2 533 1GB (HY5PS12821B)
HDD	Seagate ST340016A 40GB
CDROM	Behavior DVD ROM
Display	LG.Philips LM170E01
Operating System	Windows XP Eng
Test Program	3Dmark 2003

Voltage	Current (A)	Power (W)	Remark
12V	6.24	74.88	

9.Test Environment:

Motherboard	LS-371
CPU	Intel(R) Core 2 Duo T7600 /2M/2.33GHZ
Memory	Kingston DDR2 533 1GB (HY5PS12821B)
HDD	Seagate ST340016A 40GB WD3000JS-22PDB0 300.0GB(Serial ATA)
CDROM	Behavior DVD ROM
Display	LG.Philips LM170E01
Operating System	Windows XP Eng
Test Program	3Dmark 2003

Voltage	Current (A)	Power (W)	Remark
12V	6.49	77.88	

4.2 Thermal measurements at various points on the board

Test Environment :

CPU	Intel Celeron 420 /1M/ 1.73 GHZ
Memory	200PIN DDR2 667 1GB
HDD	WD2500JB-00REA0 250.0GB
CD-ROM	BenQ CB523C
Power	Hec Windmill PRO 315W
Operating System	Windows XP
Test Program	3D Mark 2003

Test Result:

CPU	45.9°C
945GM (Northbridge)	54.9°C
ICH7-M (Southbridge)	52.3°C
U1	52.7°C
U3	53.4°C
U8	42.4°C
L3	52.1°C

5. Performance Test

5.1-1 WinBench 99 Version 1.1

Test Environment
Intel Celeron 420 /1M/ 1.73 GHZ GREENCOM(E5108AE-6E-E) DDR2 667 1GB WD2500JB-00REA0 250.0GB

1. Windows 2003

Item	WEIGHTED SUITE	Result	Remark
1	CPUmark 99	Pass	222
2	FPU WinMark	Pass	10300
3	Business Disk WinMark 99	Pass	12100 Thousand Bytes/Sec
4	High-End Disk WinMark 99	Pass	43500 Thousand Bytes/Sec
5	Business Graphics WinMark 99	Pass	226
6	High-End Graphics WinMark 99	Pass	1070

2. Windows XP Eng

Item	WEIGHTED SUITE	Result	Remark
1	CPU mark99	Pass	219
2	FPU WinMark	Pass	10200
3	Business Disk WinMark 99	Pass	7650 Thousand Bytes/Sec
4	High-End Disk WinMark 99	Pass	16800 Thousand Bytes/Sec
5	Business Graphics WinMark 99	Pass	324
6	High-End Graphics WinMark 99	Pass	979

3. Windows XP Vista

Item	WEIGHTED SUITE	Result	Remark
1	CPU mark99	Pass	212
2	FPU WinMark	Pass	10100
3	Business Disk WinMark 99	Pass	7420 Thousand Bytes/Sec
4	High-End Disk WinMark 99	Pass	27700 Thousand Bytes/Sec
5	Business Graphics WinMark 99	Pass	120
6	High-End Graphics WinMark 99	Pass	563

5.1-2 WinBench 99 Version 1.2

Test Environment
Intel Celeron 420 /1M/ 1.73 GHZ GREENCOM(E5108AE-6E-E) DDR2 667 1GB WD2500JB-00REA0 250.0GB

1. Windows 2003

Item	WEIGHTED SUITE	Result	Remark
1	Business Disk WinMark 99	Pass	11800 Thousand Bytes/Sec
2	High-End Disk WinMark 99	Pass	31300 Thousand Bytes/Sec

2. Windows XP Eng

Item	WEIGHTED SUITE	Result	Remark
1	Business Disk WinMark 99	Pass	7310 Thousand Bytes/Sec
2	High-End Disk WinMark 99	Pass	26300 Thousand Bytes/Sec

3. Windows XP Vista

Item	WEIGHTED SUITE	Result	Remark
1	Business Disk WinMark 99	Pass	7040 Thousand Bytes/Sec
2	High-End Disk WinMark 99	Pass	27300 Thousand Bytes/Sec

5.2 Business Win Stone

Windows 2003

WEIGHTED SUITE	Test Environment	Result	Remark
Business Win stone2001	Intel Celeron 420 /1M/ 1.73 GHZ	Pass	73.3
	GREENCOM(E5108AE-6E-E)		73.7
	DDR2 667 1GB		74
	WD2500JB-00REA0 250.0GB		73.2
	BenQ CB523C		75
Business Win stone2002	Intel Celeron 420 /1M/ 1.73 GHZ	Pass	37
	GREENCOM(E5108AE-6E-E)		37.3
	DDR2 667 1GB		36.9
	WD2500JB-00REA0 250.0GB		37.3
			37.4

5.3 Content Creation Winstone

Windows XP Eng

WEIGHTED SUITE	Test Environment	Result	Remark
Content Creation Winstone 2000	Intel Celeron 420 /1M/ 1.73 GHZ GREENCOM(E5108AE-6E-E) DDR2 667 1GB WD2500JB-00REA0 250.0GB	Pass	89.5 91.5 90.8 91.5 91.8
Content Creation Winstone 2001	Intel Celeron 420 /1M/ 1.73 GHZ GREENCOM(E5108AE-6E-E) DDR2 667 1GB WD2500JB-00REA0 250.0GB	Pass	108 110.7 108.1 108 107.1

5.4 3D MARK

1. Windows XP chi

WEIGHTED SUITE	Test Environment	Result	Remark
3DMARK2000 Scores	Intel Celeron 420 /1M/ 1.73 GH Kingston(HY5PS12821B) DDR2 533 1GB WD2500JB-00REA0 250.0GB BenQ CB523C	Pass	6126
3DMARK2001 Scores		Pass	4218
3DMARK2003 Scores		Pass	1038
3DMARK2005 Scores		Pass	385

2. Windows Vista

WEIGHTED SUITE	Test Environment	Result	Remark
3DMARK2000 Scores	Intel Celeron 420 /1M/ 1.73 GH Kingston(HY5PS12821B) DDR2 533 1GB WD2500JB-00REA0 250.0GB	Pass	3536
3DMARK2001 Scores		Pass	2870

3DMARK2003 Scores	Pass	755
3DMARK2005 Scores	Pass	355

3. Windows XP chi

WEIGHTED SUITE	Test Environment	Result	Remark
3DMARK2000 Scores	Intel Celeron 420 /1M/ 1.73 GHZ GREENCOM(E5108AE-6E-E) DDR2 667 1GB WD2500JB-00REA0 250.0GB BenQ CB523C	Pass	6164
3DMARK2001 Scores		Pass	4196
3DMARK2003 Scores		Pass	1019
3DMARK2005 Scores		Pass	380

4. Windows Vista

WEIGHTED SUITE	Test Environment	Result	Remark
3DMARK2000 Scores	Intel Celeron 420 /1M/ 1.73 GHZ GREENCOM(E5108AE-6E-E)	Pass	3531

3DMARK2001 Scores
3DMARK2003 Scores
3DMARK2005 Scores

Pass	2871
Pass	742
Pass	359

5.5 3D MARK2006

Windows XP chi

Item	WEIGHTED SUITE	Test Environment	Result	Remark
1	3DMARK Source	Intel Celeron 420 /1M/ 1.73 GHZ	Pass	143
2	SM2.0 Source	GREENCOM(E5108AE-6E-E)	Pass	65
3	CPU Source	DDR2 667 1GB WD2500JB-00REA0 250.0GB BenQ CB523C	Pass	734

Windows XP Vista

Item	WEIGHTED SUITE	Test Environment	Result	Remark
1	3DMARK Source	Intel Celeron 420 /1M/ 1.73 GHZ	Pass	145
2	SM2.0 Source	GREENCOM(E5108AE-6E-E)	Pass	66
3	CPU Source	DDR2 667 1GB WD2500JB-00REA0 250.0GB BenQ CB523C	Pass	720

5.6 PC MARK2002

Test Environment
Intel Celeron 420 /1M/ 1.73 GHZ GREENCOM(E5108AE-6E-E) DDR2 667 1GB WD2500JB-00REA0 250.0GB

Windows XP eng

Item	WEIGHTED SUITE	Result	Remark
1	CPU test Source	Pass	5907
2	Memory test Source	Pass	7884
3	HDD test Source	Pass	792

Windows XP Vista

Item	WEIGHTED SUITE	Result	Remark
1	Memory test Source	Pass	7644
2	HDD test Source	Pass	734

5.7 PC MARK2004

Test Environment
Intel Celeron 420 /1M/ 1.73 GHZ GREENCOM(E5108AE-6E-E) DDR2 667 1GB WD2500JB-00REA0 250.0GB

Windows XP eng

Item	WEIGHTED SUITE	Result	Remark
1	Memory test Source	Pass	3244
2	Graphic test Source	Pass	714

Windows XP Vista

Item	WEIGHTED SUITE	Result	Remark
1	Memory test Source	Pass	3147
2	Graphic test Source	Pass	634

5.8 PC MARK2005

Test Environment
Intel Celeron 420 /1M/ 1.73 GHZ Kingston(HY5PS12821B) DDR2 533 1GB WD2500JB-00REA0 250.0GB

Windows XP eng

Item	WEIGHTED SUITE	Result	Remark
1	CPU test Source	Pass	2887
2	Memory test Source	Pass	2669
3.	Graphic test Source	Pass	585

Windows XP Vista

Item	WEIGHTED SUITE	Result	Remark
1	CPU test Source	Pass	2695
2	Memory test Source	Pass	2616