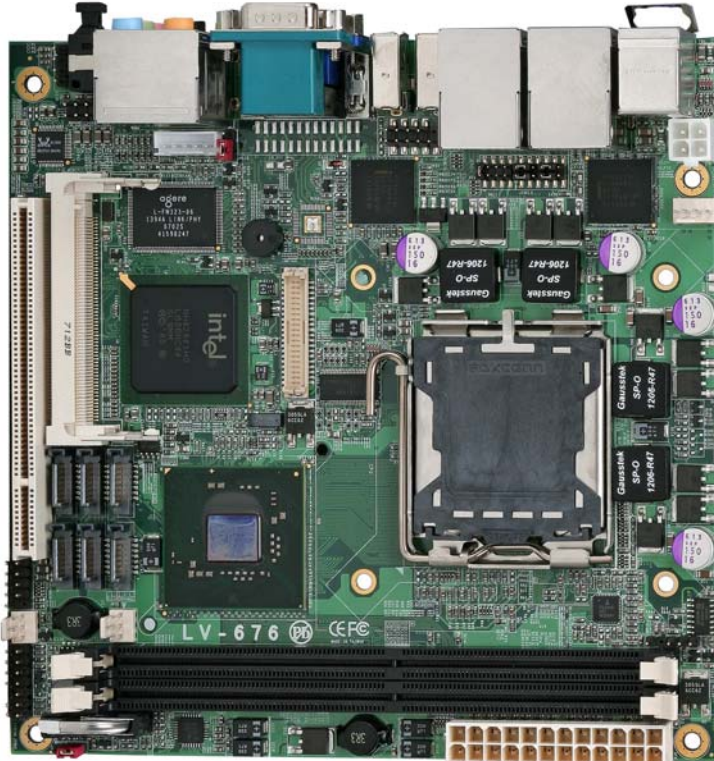


LV-676

Test Report

Edition 1.0



Index

Index	2
1. Function test	4
1.1 Hardware function	4
1.2 BIOS function	6
1.3 Driver	8
2. Compatibility test.....	9
2.1 CPU Test	9
2.2 Memory Test.....	10
2.3 VGA Graphic Test.....	11
2.4 Audio Test.....	12
2.5 HDD Test	13
2.6 CD-ROM Test	15
2.7 USB Test	18
2.8 Serial Port Test	19
2.9 Keyboard 、 Mouse Test	20
2.10 LAN Test.....	21
2.11 Power Supply Test.....	22
2.12 Floppy Drive Test.....	23
2.13 Boot Up Test.....	24
2.14 Os Install	24
2.15 Print Port Test.....	25
3. Environmental test.....	26
3.1 Temperature Test.....	26
4. Reliability Test.....	27
4.1 Power Consumption Test	27
4.3 Thermal measurements at various points on the board.....	30

5. Performance Test.....	31
5.1 Business Win Stone 2001	31
5.2 Business Win Stone 2002	32
5.3 Multimedia Content Creation Winstone 2001	33
5.4 Multimedia Content Creation Winstone 2004	34
5.5 3D MARK	35
5.6 3D MARK2006	36
5.7 PCMARK 2002	36
5.8 PCMARK 2004	37
5.9 PCMARK 2005	37
5.10 Win Bench 99	38

1. Function test

1.1 Hardware function

Base Function Test

1	Power Button	PASS
2	Reset	PASS
3	Power LED	PASS
4	HDD LED	PASS
5	SATA1	PASS
6	SATA2	PASS
7	SATA3	PASS
8	SATA4	PASS
9	SATA5	PASS
10	SATA6	PASS
11	USB1/2	PASS
12	USB3/4	PASS
13	USB5/6	PASS
14	DDRII A	PASS
15	DDRII B	PASS
16	Floppy	PASS
18	COM1	PASS
19	COM2	PASS
20	VGA Port	PASS
21	PS2	PASS
22	AUDIO Port	PASS
23	CD_IN	PASS

25	Mini PCI	PASS
26	PCI Slot	PASS
27	IrDA	PASS
28	DIO	PASS
29	1394	PASS
30	DVI	PASS
31	LVDS	PASS
32	NBFAN	PASS
33	CPUFAN	PASS
34	SYSFAN	PASS

Jumper

1	JRTC	PASS
2	JCFSEL	PASS
3	JVLCD	PASS

1.2 BIOS function

Item	Description	Result	Remark
1	Press 'Del' to run Setup Utility	PASS	
2	Ctrl-Alt-Del – Soft-Reboot	PASS	
3	Save & Exit Setup	PASS	
4	Date & Time Setting	PASS	
5	Drive A	PASS	
6	Quick Power On Self Test	PASS	
7	Boot Device Setting	PASS	
8	Boot Up Floppy Seek	PASS	
9	Boot Up Num Lock Status	PASS	
10	Boot Display	PASS	
11	LCD TYPE	PASS	
12	On Chip Secondary PCI IDE	PASS	
13	ACPI Suspend Type	PASS	
14	Halt On	PASS	
15	Onboard Serial Port	PASS	
16	USB Controller	PASS	
17	USB Keyboard Support	PASS	
18	Onboard FDC Controller	PASS	
19	Soft-Off by PWRBTN	PASS	
20	Power On Function	PASS	
21	ACPI Function	PASS	
22	Hot Key Password	PASS	
23	Wake-up by PCI card	PASS	

24	Resume by Alarm	PASS	
25	Watch Dog Timer Select	PASS	
26	Init Display First	PASS	
27	Onboard Parallel Port	PASS	
28	PWRON After PWR-Fail	PASS	
29	Power On by Ring	PASS	
30	Set Supervisor Password	PASS	
31	Set User Password	PASS	
32	UART Mode Select	PASS	
33	RxD , Txd Active	PASS	
34	IR Transmission Delay	PASS	
35	UR2 duplex Mode	PASS	
36	Use IR Pins	PASS	

1.3 Driver

1. Windows XP SP2

Item	Description	Result	Remark
1	Chipset Driver	PASS	
2	VGA Driver	PASS	
3	Audio Driver	PASS	
4	LAN Driver	PASS	

2. Windows Professional 2000

Item	Description	Result	Remark
1	Chipset Driver	PASS	
2	VGA Driver	PASS	
3	Audio Driver	PASS	
4	LAN Driver	PASS	

3. Windows Server 2003

Item	Description	Result	Remark
1	Chipset Driver	PASS	
2	Audio Driver	PASS	
3	LAN Driver	PASS	

4. Windows Vista

Item	Description	Result	Remark
1	Chipset Driver	PASS	
2	VGA Driver	PASS	
3	Audio Driver	PASS	
4	LAN Driver	PASS	

2. Compatibility test

2.1 CPU Test

Spec	CPU Speed	Family	Processor	FSB	L2 Size	Result
SLACR	2.40 GHz	Core 2 Quad	Q6600	1066 MHz	8MB	PASS
SL9UM	2.40 GHz	Core 2 Quad	Q6600	1066 MHz	8 MB	PASS
SLAPC	2.53 GHz	Core 2 Duo	E7200	1066 MHz	3 MB	PASS
SLAVN	2.53 GHz	Core 2 Duo	E7200	1066 MHz	3 MB	PASS
SL9TA	1.86 GHz	Core 2 Duo	E6300	1066 MHz	8 MB	PASS
SL9XP	1.60 GHz	Celeron	420	800 MHz	512 KB	PASS
SL9XL	2 GHz	Celeron	440	800 MHz	512 KB	PASS

2.2 Memory Test

DDRII DRAM	DDRII Freq	Capacity Mbytes	Operating System	Result
Transcend (K4T51083QC)	DDRII 800	1GB	WinXP · Server2003 Win2000 · Vista	
Transcend (K4T1G084QA-ZCE6)	DDRII 667	2GB	WinXP · Server2003 Win2000 · Vista	
Kingston (V59C1512804QBF25)	DDRII 533	512MB	WinXP · Server2003 Win2000 · Vista	
Kingston (V59C1512804QBF25)	DDRII 800	1GB	WinXP · Server2003 Win2000 · Vista	
Kingston 512MB (KVR800D2N5)	DDRII800	256MB	WinXP · Server2003 Win2000 · Vista	
Kingston (hynix HY5PS12821B)	DDRII533	1G	WinXP · Server2003 Win2000 · Vista	

2.3 VGA Graphic Test

1. Windows XP

Item	Description	Result	Remark
1	Resolution/Color Change	PASS	
2	CRT Display Test	PASS	
3	CRT Display Quality Test	PASS	
4	LVDS Display Test	PASS	
5	Extended Display Test	PASS	
6	DVI Display Test	PASS	

2. Windows Professional 2000

Item	Description	Result	Remark
1	Resolution/Color Change	PASS	
2	CRT Display Test	PASS	
3	CRT Display Quality Test	PASS	
4	LVDS Display Test	PASS	
5	Extended Display Test	PASS	
6	DVI Display Test	PASS	

2. Windows Sever 2003

Item	Description	Result	Remark
1	Resolution/Color Change	PASS	
2	CRT Display Test	PASS	
3	CRT Display Quality Test	PASS	

3. Windows Vista

Item	Description	Result	Remark
------	-------------	--------	--------

1	Resolution/Color Change	PASS	
2	CRT Display Test	PASS	
3	CRT Display Quality Test	PASS	
4	LVDS Display Test	PASS	
5	Extended Display Test	PASS	
6	DVI Display Test	PASS	

2.4 Audio Test

1. Windows XP

Item	Description	Result	Remark
1	Driver Install	PASS	
2	Sound Effect	PASS	
3	Equalizer	PASS	
4	Microphone	PASS	

2. Windows Professional 2000

Item	Description	Result	Remark
1	Driver Install	PASS	
2	Sound Effect	PASS	
3	Equalizer	PASS	
4	Microphone	PASS	

3. Windows Server 2003

Item	Description	Result	Remark
1	Driver Install	PASS	
2	Sound Effect	PASS	
3	Equalizer	PASS	

4	Microphone	PASS	
---	------------	------	--

4. Windows Vista

Item	Description	Result	Remark
1	Driver Install	PASS	
2	Sound Effect	PASS	
3	Equalizer	PASS	
4	Microphone	PASS	

2.5 HDD Test

Model: Western Digital WD1600JB-00mh80 160GB

1. MS-DOS 6.22

Item	Description	Result	Remark
1	HDD Size Detect	Pass	
2	HDD Read/Write	Pass	
3	HDD Partition/Format	Pass	
4	HDD LED Check	Pass	

2. Windows Sever 2003

Item	Description	Result	Remark
1	HDD Detect	Pass	
2	HDD Read/Write	Pass	
3	HDD Data Transfer	Pass	
4	HDD Format	Pass	
5	HDD LED Check	Pass	

3. Windows XP

Item	Description	Result	Remark
1	HDD Detect	Pass	
2	HDD Read/Write	Pass	
3	HDD Data Transfer	Pass	
4	HDD Format	Pass	
5	HDD LED Check	Pass	

Model: HITACHI HDT722525DL380 250GB

1. MS-DOS 6.22

Item	Description	Result	Remark
1	HDD Size Detect	Pass	
2	HDD Read/Write	Pass	
3	HDD Partition/Format	Pass	
4	HDD LED Check	Pass	

2. Windows Sever 2003

Item	Description	Result	Remark
1	HDD Detect	Pass	
2	HDD Read/Write	Pass	
3	HDD Data Transfer	Pass	
4	HDD Format	Pass	
5	HDD LED Check	Pass	

3. Windows XP

Item	Description	Result	Remark
1	HDD Detect	Pass	
2	HDD Read/Write	Pass	
3	HDD Data Transfer	Pass	
4	HDD Format	Pass	
5	HDD LED Check	Pass	

2.6 CD-ROM Test

Model: LITEON DVD SOSC-2485KX (USB)

1. MS-DOS 6.22

Item	Description	Result	Remark
1	CD-ROM Detect	Pass	
2	CD-ROM Read	Pass	
3	CD-ROM Bootable	Pass	
4	CD-ROM Data Transfer	Pass	

2. Windows 2003 Server

Item	Description	Result	Remark
1	CD-ROM Detect	Pass	
2	CD-ROM Read	Pass	
3	CD-ROM Data Transfer	Pass	

3. Windows XP

Item	Description	Result	Remark
1	CD-ROM Detect	Pass	
2	CD-ROM Read	Pass	
3	CD-ROM Data Transfer	Pass	

4. Windows Vista

Item	Description	Result	Remark
1	CD-ROM Detect	Pass	
2	CD-ROM Read	Pass	
3	CD-ROM Data Transfer	Pass	

Model: LITEON DVD SOSW-833SX (USB)

1. MS-DOS 6.22

Item	Description	Result	Remark
1	CD-ROM Detect	Pass	
2	CD-ROM Read	Pass	
3	CD-ROM Bootable	Pass	
4	CD-ROM Data Transfer	Pass	

2. Windows 2003 Server

Item	Description	Result	Remark
1	CD-ROM Detect	Pass	
2	CD-ROM Read	Pass	
3	CD-ROM Data Transfer	Pass	

3. Windows XP

Item	Description	Result	Remark
1	CD-ROM Detect	Pass	
2	CD-ROM Read	Pass	
3	CD-ROM Data Transfer	Pass	

4. Windows Vista

Item	Description	Result	Remark
1	CD-ROM Detect	Pass	
2	CD-ROM Read	Pass	

3	CD-ROM Data Transfer	Pass	
---	----------------------	------	--

Model: ASUS DVD DRW-1014BLT (SATA)

1. MS-DOS 6.22

Item	Description	Result	Remark
1	CD-ROM Detect	Pass	
2	CD-ROM Read	Pass	
3	CD-ROM Bootable	Pass	
4	CD-ROM Data Transfer	Pass	

2. Windows Professional 2000

Item	Description	Result	Remark
1	CD-ROM Detect	Pass	
2	CD-ROM Read	Pass	
3	CD-ROM Data Transfer	Pass	

3. Windows Server 2003

Item	Description	Result	Remark
1	CD-ROM Detect	Pass	
2	CD-ROM Read	Pass	
3	CD-ROM Data Transfer	Pass	

4. Windows XP

Item	Description	Result	Remark
1	CD-ROM Detect	Pass	
2	CD-ROM Read	Pass	
3	CD-ROM Data Transfer	Pass	

5. Windows Vista

Item	Description	Result	Remark
1	CD-ROM Detect	Pass	

2	CD-ROM Read	Pass	
3	CD-ROM Data Transfer	Pass	

2.7 USB Test

1. Windows XP

Item	Description	Result	Remark
1	Device Manager Check	PASS	
2	External USB Keyboard Test	PASS	
3	External USB Mouse Test	PASS	
4	Hot plugging test	PASS	

2. Windows Professional 2000

Item	Description	Result	Remark
1	Device Manager Check	PASS	
2	External USB Keyboard Test	PASS	
3	External USB Mouse Test	PASS	
4	Hot plugging test	PASS	

3. Windows Server 2003

Item	Description	Result	Remark
1	Device Manager Check	PASS	
2	External USB Keyboard Test	PASS	
3	External USB Mouse Test	PASS	
4	Hot plugging test	PASS	

4. Windows Vista

Item	Description	Result	Remark
1	Device Manager Check	PASS	

2	External USB Keyboard Test	PASS	
3	External USB Mouse Test	PASS	
4	Hot plugging test	PASS	

2.8 Serial Port Test

1. MS-DOS

Item	Description	Result	Remark
1	RS-232 Mouse Test	PASS	
2	RS-232 Modem Test	PASS	
3	B&B Electronics COM Port RS-232 Test (W/Loop-Back)	PASS	

2. Windows Server 2003

Item	Description	Result	Remark
1	Device Manager Check	PASS	
2	RS-232 Mouse Test	PASS	

3. Windows Professional 2000

Item	Description	Result	Remark
1	Device Manager Check	PASS	
2	RS-232 Mouse Test	PASS	

3. Windows XP

Item	Description	Result	Remark
1	Device Manager Check	PASS	
2	RS-232 Mouse Test	PASS	

4. Windows Vista

Item	Description	Result	Remark
1	Device Manager Check	PASS	
2	RS-232 Mouse Test	PASS	

2.9 Keyboard 、 Mouse Test

1. MS-DOS

Item	Description	Result	Remark
1	Keyboard LED Status Test	PASS	
2	Keyboard Typing Test	PASS	

2. Windows XP

Item	Description	Result	Remark
1	Device Manager Check	PASS	
2	Keyboard Typing Test	PASS	
3	Mouse Detect Test	PASS	

3. Professional 2000

Item	Description	Result	Remark
1	Device Manager Check	PASS	
2	Keyboard Typing Test	PASS	
3	Mouse Detect Test	PASS	

4. Windows Server 2003

Item	Description	Result	Remark
1	Device Manager Check	PASS	
2	Keyboard Typing Test	PASS	
3	Mouse Detect Test	PASS	

5. Windows Vista

Item	Description	Result	Remark
1	Device Manager Check	PASS	
2	Keyboard Typing Test	PASS	
3	Mouse Detect Test	PASS	

2.10 LAN Test

1. Windows XP SP2

Item	Description	Result	Remark
1	Device Manager Check	PASS	
2	Data Transfer Test	PASS	

2. Windows Professional 2000

Item	Description	Result	Remark
1	Device Manager Check	PASS	
2	Data Transfer Test	PASS	

3. Windows Server 2003

Item	Description	Result	Remark
1	Device Manager Check	PASS	
2	Data Transfer Test	PASS	

4. Windows Vista

Item	Description	Result	Remark
1	Device Manager Check	PASS	
2	Data Transfer Test	PASS	

2.11 Power Supply Test

1. MS-DOS 6.22

Item	Description	Verification	
		Result	Remark
1	ATX Power On/Off	PASS	Coolive AP-350F
2	ATX Power On/Off	PASS	HEC WINDMILL PRO 315W

2. Windows XP

Item	Description	Verification	
		Result	Remark
1	ATX Power On/Off	PASS	Coolive AP-350F
2	ATX Power On/Off	PASS	HEC WINDMILL PRO 315W

3. Windows Professional 2000

Item	Description	Verification	
		Result	Remark
1	ATX Power On/Off	PASS	Coolive AP-350F
2	ATX Power On/Off	PASS	HEC WINDMILL PRO 315W

4. Windows Server 2003

Item	Description	Verification	
		Result	Remark
1	ATX Power On/Off	PASS	Coolive AP-350F
2	ATX Power On/Off	PASS	HEC WINDMILL PRO 315W

5. Windows Vista

Item	Description	Verification	
		Result	Remark
1	ATX Power On/Off	PASS	Coolive AP-350F
2	ATX Power On/Off	PASS	HEC WINDMILL PRO 315W

2.12 Floppy Drive Test

Model: MITSUMI 353M3

1. MS-DOS 6.22

Item	Description	Result	Remark
1	Floppy Drive Detect	Pass	
2	Floppy Read/Write	Pass	
3	Boot from Floppy	Pass	
4	Floppy Data Transfer	Pass	

2. Windows Professional 2000

Item	Description	Result	Remark
1	Floppy Drive Detect		
2	Floppy Read/Write		
3	Floppy Data Transfer		

3. Windows 2003 Server

Item	Description	Result	Remark
1	Floppy Drive Detect	Pass	
2	Floppy Read/Write	Pass	
3	Floppy Data Transfer	Pass	

4. Windows XP

Item	Description	Result	Remark
1	Floppy Drive Detect	Pass	
2	Floppy Read/Write	Pass	
3	Floppy Data Transfer	Pass	

5. Windows Vista

Item	Description	Result	Remark
------	-------------	--------	--------

1	Floppy Drive Detect	Pass	
2	Floppy Read/Write	Pass	
3	Floppy Data Transfer	Pass	

2.13 Boot Up Test

Item	Description	Result	Remark
1	Soft boot from HDD	PASS	
2	Soft boot from CD-ROM	PASS	
3	Soft boot from Floppy	PASS	
4	Reboot test with Win XP	PASS	
5	Reboot test with Win Server 2003	PASS	
6	Reboot test with Win Profession 2000	PASS	
7	Reboot test with Windows Vista	PASS	

2.14 Os Install

Item	Description	Result	Remark
1	Windows Vista	PASS	
2	Windows XP SP2	PASS	
3	Windows Server 2003	PASS	
4	Windows Profession 2000	PASS	
5	Linux Suse 10.2	PASS	

2.15 Print Port Test

1. Window XP

Item	Description	Result	Remark
1	ECP/EPP PRINT TEST	PASS	

2. Windows 2003

Item	Description	Result	Remark
1	ECP/EPP PRINT TEST	PASS	

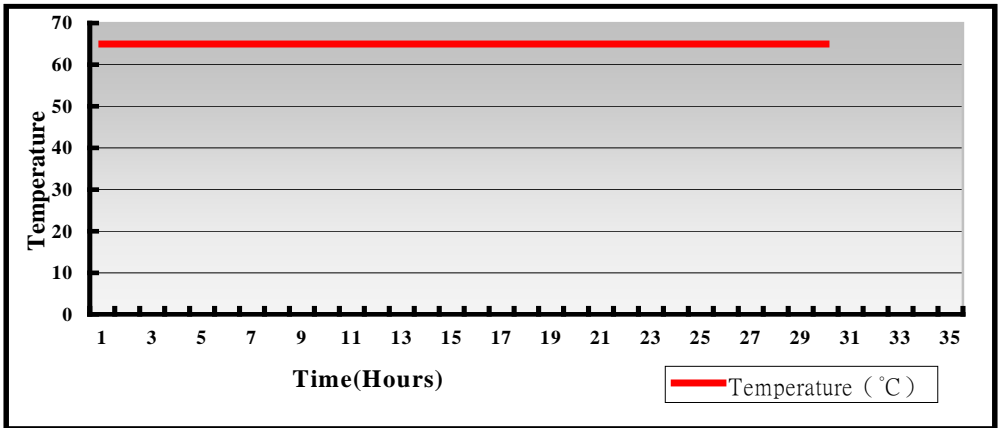
3. Environmental test

3.1 Temperature Test

Hardware Device list:

System Board	LV-676D
CPU	Intel CORE 2 DUO 1.86GHZ
Memory	Transcend DDRII 800 1GB (K4T51083QC) Transcend DDRII 667 2GB (K4T1G084QA-ZCE6)
HDD	Western Digital WD1600JS-00MHB0 160GB
Operating OS	Windows XP
Test Equipment	THERMOTRON 2800 Programmer/Controller
Test Program	3DMark 2003

Test Result:



Boot Up Test:

Temperature	Result	Remark
- 20°C	PASS	Times
70°C	PASS	Times

4. Reliability Test

4.1 Power Consumption Test

1. Test Environment:

Motherboard	LV-676X
CPU	Pentium-D/800MHz/2x1M/ 2.8 GHz
Memory	Transcend DDRII667 2GB Transcend DDRII800 1GB
HDD	Fujitsu MHT2080BH 80GB

Voltage	Current (A)	Power (W)	Remark
12V	6.26	75.12	Booting
5V	2.94	14.7	Booting
3.3V	4.26	14.058	Booting

2. Test Environment:

Motherboard	LV-676X
CPU	Pentium-D/800MHz/2x1M/ 2.8 GHz
Memory	Transcend DDRII667 2GB Transcend DDRII800 1GB
HDD	Fujitsu MHT2080BH 80GB
Operating System	Windows XP SP2
Test Program	3DMark 2003

Voltage	Current (A)	Power (W)	Remark
12V	7.49	89.88	
5V	3.48	17.4	
3.3V	7.41	24.453	

3.Test Environment:

Motherboard	LV-676X
CPU	Core 2 Duo/1066/2M/ 1.86 GHZ
Memory	Transcend DDRII667 2GB Transcend DDRII800 1GB
HDD	Fujitsu MHT2080BH 80GB

Voltage	Current (A)	Power (W)	Remark
12V	2.12	25.44	Booting
5V	2.83	14.15	Booting
3.3V	4.38	14.454	Booting

4.Test Environment:

Motherboard	LV-676X
CPU	Conroe/1066/2M/ 1.86 GHZ
Memory	Transcend DDRII667 2GB Transcend DDRII800 1GB
HDD	Fujitsu MHT2080BH 80GB
Operating System	Windows XP SP2
Test Program	3DMark 2003

Voltage	Current (A)	Power (W)	Remark
12V	2.49	29.88	
5V	3.16	15.8	
3.3V	6.17	20.361	

5.Test Environment:

Motherboard	LV-676D
CPU	Core 2 Quad/1066/8M/ 2.40 GHZ
Memory	Kingston DDRII800 512MB (KVR800D2N5) Transcend DDRII800 1GB
HDD	Hitachi HDS7208080PLA380 80GB
DVD-ROM	ASUS DRW-1814BLT

Voltage	Current (A)	Power (W)	Remark
12V	6.3	75.6	Booting
5V	3.53	17.65	Booting
3.3V	4.28	14.124	Booting

6.Test Environment:

Motherboard	LV-676D
CPU	Core 2 Quad/1066/8M/ 2.40 GHZ (Q6600)
Memory	Kingston DDRII800 512MB (KVR800D2N5) Transcend DDRII800 1GB
HDD	Hitachi HDS7208080PLA380 80GB
Operating System	Windows XP SP2
Test Program	3DMark 2003

Voltage	Current (A)	Power (W)	Remark
12V	7.3	87.6	
5V	6.0	30	
3.3V	4.76	15.708	

4.3 Thermal measurements at various points on the board

Test Environment :

CPU	Intel CORE 2 DUO 1.86GHZ
Memory	Transcend DDRII 800 1GB (K4T1G084QA-ZCE6)
HDD	HITACHI HDT722525DL380 250GB
Power	Coolive AP-350F
Operating System	Windows Vista 64bit
Test Program	3D WinMark2003

Test Result:

CPU	47.4°C
Q965 (Northbridge)	33.1°C
ICH8DO (Southbridge)	45.8°C
U12	50.5°C
U15	50.7°C
U19	34.8°C
U28	61.4°C
L1	56.6°C

5. Performance Test

5.1 Business Win Stone 2001

Processor: Intel Core 2 Duo 1.8GHZ

1. Windows Professional 2000

Item	WEIGHTED SUITE	Result	Remark
1	Business Win stone 2001 Win stone 2001 Scores	102.4 93.2 96.3 93.3 93.9	

2. Windows XP

Item	WEIGHTED SUITE	Result	Remark
1	Business Win stone 2001 Win stone 2001 Scores	78.2 66.4 78.2 73.4 52.8	

5.2 Business Win Stone 2002

Processor: Intel Core 2 Duo 1.8GHZ

1. Windows Professional 2000

Item	WEIGHTED SUITE	Result	Remark
1	Business Win stone 2002 Win stone 2002 Scores	43.1 43.1 3.1 43 42	

2. Windows XP

Item	WEIGHTED SUITE	Result	Remark
1	Business Win stone 2002 Win stone 2002 Scores	37.9 40 39.7 39.8 39.6	

5.3 Multimedia Content Creation Winstone 2001

Processor: Intel Core 2 Duo 1.8GHZ

1. Windows Professional 2000

Item	WEIGHTED SUITE	Result	Remark
1	Multimedia Content Creation Winstone 2001 Scores	135.8 135.2 134.4 135.5 135.3	

2. Windows XP

Item	WEIGHTED SUITE	Result	Remark
1	Multimedia Content Creation Winstone 2001 Scores	126.1 125.9 125.1 125.8 126.3	

5.4 Multimedia Content Creation Winstone 2004

Processor: Intel Core 2 Duo 1.8GHZ

1. Windows Professional 2000

Item	WEIGHTED SUITE	Result	Remark
1	Multimedia Content Creation Winstone 2004 Scores	33.4 33.6 33.6 35.6 33.6	

2. Windows XP

Item	WEIGHTED SUITE	Result	Remark
1	Multimedia Content Creation Winstone 2004 Scores	33.4 33.5 31.7 33.2 33.5	

5.5 3D MARK

Processor: Intel Core 2 Duo 1.8GHZ

1. Windows Professional 2000

Item	WEIGHTED SUITE	Result	Remark
1	3DMARK2000 Scores	5753	
2	3DMARK2001 Scores	4963	
3	3DMARK2003 Scores	1045	

2. Windows XP

Item	WEIGHTED SUITE	Result	Remark
1	3DMARK2001 Scores	4697	
2	3DMARK2003 Scores	1385	
3	3DMARK2005 Scores	444	

3. Vista 64 bit

Item	WEIGHTED SUITE	Result	Remark
1	3DMARK2003 Scores	1084	
2	3DMARK2005 Scores	618	

5.6 3D MARK2006

Processor: Intel Pentium 4 3.40GHZ

Windows XP

Item	WEIGHTED SUITE	Result	Remark
1	3DMark Source	215	
2	SM2.0 Source	99	
3	CPU Source	1541	

5.7 PCMARK 2002

Processor: Intel Core 2 Duo 1.8GHZ

2. Windows Professional 2000

Item	WEIGHTED SUITE	Result	Remark
1	CPU Score	5951	
2	Memory Score	9021	
3	HDD Score	1655	

2. Windows XP

Item	WEIGHTED SUITE	Result	Remark
1	CPU Score	7130	
2	Memory Score	14747	
3	HDD Score	1474	

5.8 PCMARK 2004

Processor: Intel Core 2 Duo 1.8GHZ

1. Windows Professional 2000

Item	WEIGHTED SUITE	Result	Remark
1	CPU Score		
2	Memory Score	4093	
3	HDD Score	1428	
4	Graphics Score	5227	

2. Windows XP

Item	WEIGHTED SUITE	Result	Remark
1	CPU Score	6069	
2	Memory Score	5169	
3	HDD Score	5223	
4	Graphics Score	1522	
5	PCMARK Score	5526	

5.9 PCMARK 2005

Processor: Intel Core 2 Duo 1.8GHZ

1. Windows XP

Item	WEIGHTED SUITE	Result	Remark
1	CPU Score	4633	
2	Memory Scores	3998	
3	HDD Score	5454	
4	Graphics Score	1317	
5	PCMARK Score	3647	

5.10 Win Bench 99

Processor: Intel Core 2 Duo 1.8GHZ

1. Windows Professional 2000

Item	WEIGHTED SUITE	Result	Remark
1	Business Disk Win Mark 99	14000	
2	High-End Disk Win Mark 99	497000	
3	AVS/Express 3.4	44400	
4	FrontPage98	462000	
5	MicroStation SE	67300	
6	Photoshop 4.0	19400	
7	Premiere 4.2	47200	
8	Sound Forge 4.0	76200	
9	Visual C++ 5.0	65000	

2. Windows XP

Item	WEIGHTED SUITE	Result	Remark
1	Business Disk Win Mark 99	12100	
2	High-End Disk Win Mark 99	50800	
3	AVS/Express 3.4	43800	
4	FrontPage98	301000	
5	MicroStation SE	60100	
6	Photoshop 4.0	18900	
7	Premiere 4.2	50300	
8	Sound Forge 4.0	113000	
9	Visual C++ 5.0	74600	