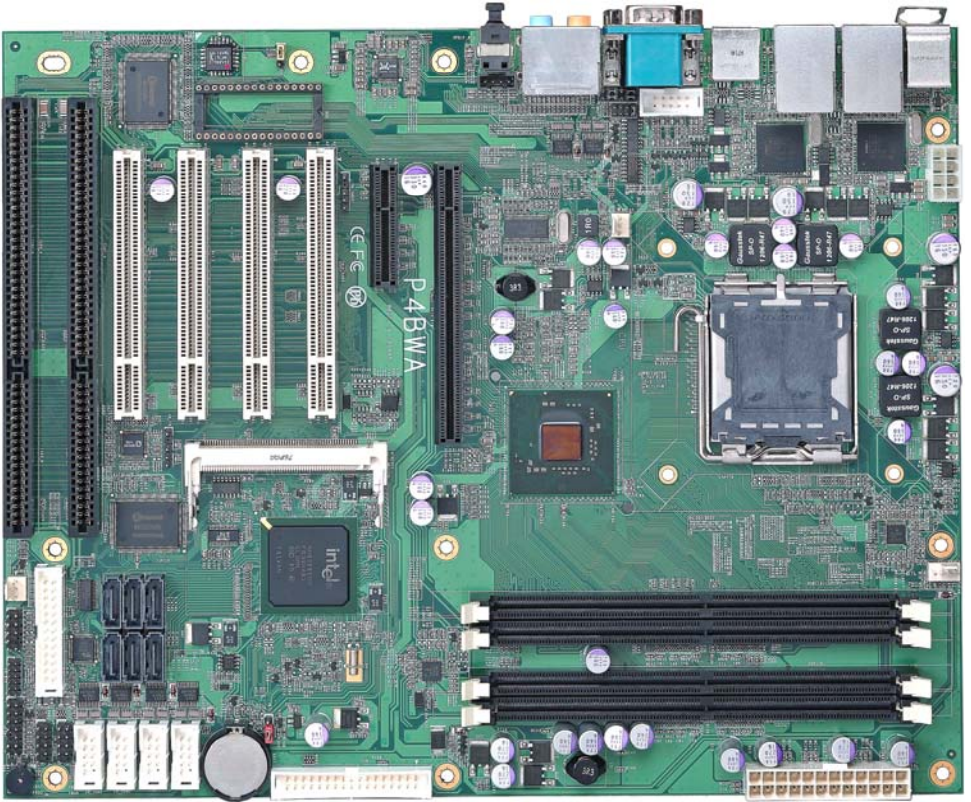


# P4BWA

## Test Report

Edition 1.0



# Index

Index .....	2
1. Function test .....	4
1.1 Hardware function .....	4
1.2 BIOS function .....	6
1.3 Driver .....	8
2. Compatibility test.....	9
2.1 CPU Test .....	9
2.2 Memory Test.....	10
2.3 VGA Graphic Test.....	11
2.4 Audio Test.....	12
2.5 HDD Test .....	13
2.6 CD-ROM Test .....	13
2.7 USB Test .....	14
2.8 Serial Port Test.....	15
2.9 Keyboard 、 Mouse Test.....	16
2.10 LAN Test.....	17
2.11 Power Supply Test.....	18
2.12 Floppy Drive Test.....	19
2.13 Boot Up Test.....	19
2.14 Os Install .....	19
2.15 Print Port Test.....	20
3. Environmental test.....	21
3.1 Temperature Test.....	21
4. Reliability Test.....	22
4.1 Power Consumption Test .....	22
P4BWA .....	25

P4BWA .....	25
P4BWA .....	26
4.2Thermal measurements at various points on the board.....	27
<b>5. Performance Test.....</b>	<b>28</b>
5.1Business Win Stone 2004 .....	28
5.2 Content Creation Winstone 2003 .....	29
5.3 Content Creation Winstone 2004 .....	30
5.4 3D MARK .....	31
5.5 3D MARK2006 .....	33
5.6 PC MARK2002.....	35
5.7 PC MARK2004.....	37
5.8 PC MARK2005.....	39

# 1. Function test

## 1.1 Hardware function

### Base Function Test

1	Power Button	Pass
2	Reset	Pass
3	Power LED	Pass
4	HDD LED	Pass
5	SATA1	Pass
6	SATA2	Pass
7	SATA3	Pass
8	SATA4	Pass
9	SATA5	Pass
10	SATA6	Pass
11	USB1	Pass
12	USB2	Pass
13	USB3	Pass
14	USB4	Pass
15	USB5	Pass
16	DDRII A1	Pass
17	DDRII A2	Pass
18	DDRII B1	Pass
19	DDRII B2	Pass
20	Floppy	Pass
21	LPT	Pass
22	COM1	Pass

23	COM2	Pass
24	COM3	Pass
25	COM4	Pass
26	COM5	Pass
27	COM6	Pass
28	VGA Port	Pass
29	PS2	Pass
30	AUDIO	Pass
31	CD_IN	Pass
32	SPDIF	Pass
33	Mini PCI	Pass
34	IrDA	Pass
35	DIO	Pass
36	NBFAN	Pass
37	CPUFAN	Pass
38	SYSFAN	Pass
39	PCI 1	Pass
40	PCI 2	Pass
41	PCI 3	Pass
42	PCI 4	Pass
43	ISA 1_B	Pass
44	ISA2_B	Pass
45	PCI-E X16	Pass
46	PCI-E X4	Pass

### Jumper

1	JRTC	Pass
---	------	------

## 1.2 BIOS function

Item	Description	Result	Remark
1	Press 'Del' to run Setup Utility	Pass	
2	Ctrl-Alt-Del – Soft-Reboot	Pass	
3	Save & Exit Setup	Pass	
4	Date & Time Setting	Pass	
5	Drive A	Pass	
6	Quick Power On Self Test	Pass	
7	Boot Device Setting	Pass	
8	Boot Up Floppy Seek	Pass	
9	Boot Up Num Lock Status	Pass	
10	On Chip Secondary PCI IDE	Pass	
11	ACPI Suspend Type	Pass	
12	Halt On	Pass	
13	Onboard Serial Port	Pass	
14	USB Controller	Pass	
15	USB Keyboard Support	Pass	
16	Onboard FDC Controller	Pass	
17	Soft-Off by PWRBTN	Pass	
18	Power On Function	Pass	
19	ACPI Function	Pass	
20	Hot Key Password	Pass	
21	Wake-up by PCI card	Pass	
22	Resume by Alarm	Pass	
23	Watch Dog Timer Select	Pass	

24	Init Display First	Pass	
25	Onboard Parallel Port	Pass	
26	PWRON After PWR-Fail	Pass	
27	Power On by Ring	Pass	
28	Set Supervisor Password	Pass	
29	Set User Password	Pass	
30	UART Mode Select	Pass	
31	RxD , Txd Active	Pass	
32	IR Transmission Delay	Pass	
33	UR2 duplex Mode	Pass	
34	Use IR Pins	Pass	
35	Onboard LAN 1 PXE ROM	Pass	
36	Onboard LAN 2 PXE ROM	Pass	
37	Console	Pass	

## 1.3 Driver

### 1. Windows XP SP2 Driver Test

Item	Description	Result	Remark
1	Chipset Driver	PASS	
2	VGA Driver	PASS	
3	Audio Driver	PASS	
4	LAN Driver	PASS	

### 2. Windows Server 2003 Driver Test

Item	Description	Result	Remark
1	Chipset Driver	Pass	
2	Audio Driver	Pass	
3	LAN Driver	Pass	

### 3. Windows Vista

Item	Description	Result	Remark
1	Chipset Driver	PASS	
2	VGA Driver	PASS	
3	Audio Driver	PASS	
4	LAN Driver	PASS	



## 2. Compatibility test

### 2.1 CPU Test

Spec	CPU Speed	Family	Processor	FSB	L2 Size	Result
<a href="#">SLACR</a>	2.40 GHz	Core 2 Quad	Q6600	1066 MHz	8MB	PASS
<a href="#">SL9UM</a>	2.40 GHz	Core 2 Quad	Q6600	1066 MHz	8 MB	PASS
<a href="#">SLAPC</a>	2.53 GHz	Core 2 Duo	E7200	1066 MHz	3 MB	PASS
<a href="#">SLAVN</a>	2.53 GHz	Core 2 Duo	E7200	1066 MHz	3 MB	PASS
<a href="#">SL9TA</a>	1.86 GHz	Core 2 Duo	E6300	1066 MHz	8 MB	PASS
<a href="#">SL9XP</a>	1.60 GHz	Celeron	420	800 MHz	512 KB	PASS
<a href="#">SL9XL</a>	2 GHz	Celeron	440	800 MHz	512 KB	PASS

## 2.2 Memory Test

<b>DDRII DRAM</b>	<b>DDRII Freq</b>	<b>Capacity Mbytes</b>	<b>Operating System</b>	<b>Result</b>
Transcend (K4T51083QC)	DDRII 800	1GB	WinXP · Server2003 Vista	PASS
Transcend (K4T1G084QA-ZCE6)	DDRII 667	2GB	WinXP · Server2003 Vista	PASS
Kingston (V59C1512804QBF25)	DDRII 533	512MB	WinXP · Server2003 Vista	PASS
Kingston (V59C1512804QBF25)	DDRII 800	1GB	WinXP · Server2003 Vista	PASS
Transcend (K4T1G084QA-ZCD5)	DDRII 533	2GB	WinXP · Server2003 Vista	PASS
Transcend (ELPIDA E1108AA-5C-E)	DDRII 533	2GB	WinXP · Server2003 Vista	PASS

## 2.3 VGA Graphic Test

### 1. Windows XP

Item	Description	Result	Remark
1	Resolution/Color Change	PASS	
2	CRT Display Test	PASS	
3	CRT Display Quality Test	PASS	

### 2. Windows Vista

Item	Description	Result	Remark
1	Resolution/Color Change	Pass	
2	CRT Display Test	Pass	
3	CRT Display Quality Test	Pass	

### 3. Windows Sever 2003

Item	Description	Result	Remark
1	Resolution/Color Change	Pass	
2	CRT Display Test	Pass	
3	CRT Display Quality Test	Pass	

## 2.4 Audio Test

### 1. Windows XP

Item	Description	Result	Remark
1	Driver Install	PASS	
2	Sound Effect	PASS	
3	Equalizer	PASS	
4	Microphone	PASS	

### 2. Windows Server 2003

Item	Description	Result	Remark
1	Driver Install	PASS	
2	Sound Effect	PASS	
3	Equalizer	PASS	
4	Microphone	PASS	

### 3. Windows Vista

Item	Description	Result	Remark
1	Driver Install	PASS	
2	Sound Effect	PASS	
3	Equalizer	PASS	
4	Microphone	PASS	

## 2.5 HDD Test

HDD Type	Operating System	HDD Size Detect	HDD Data Transfer	HDD LED Check
Western Digital WD1600JS-00MHB0 160GB	MS-DOS	PASS	PASS	PASS
HITACHI HDT722525DL380 250GB	WinServer2003	PASS	PASS	PASS
Western Digital WD800JD-75MSA3 80G	Win XP	PASS	PASS	PASS
	Vista	PASS	PASS	PASS

## 2.6 CD-ROM Test

CD-ROM Type	Operating System	CD-ROM Detect	CD-ROM Data Transfer	PLAY DVD
LITEON DVD SOSC-2485KX	WinServer2003	PASS	PASS	PASS
LITEON DVD SOSW-833SX	Vista	PASS	PASS	PASS
LG DVD GSA-H62L	Win XP	PASS	PASS	PASS
PIONEER DVD PVR-212B		PASS	PASS	PASS

## 2.7 USB Test

### 1. Windows XP

Item	Description	Result	Remark
1	Device Manager Check	PASS	
2	External USB Keyboard Test	PASS	
3	External USB Mouse Test	PASS	
4	Hot plugging test	PASS	

### 2. Windows Server 2003

Item	Description	Result	Remark
1	Device Manager Check	PASS	
2	External USB Keyboard Test	PASS	
3	External USB Mouse Test	PASS	
4	Hot plugging test	PASS	

### 3. Windows Vista

Item	Description	Result	Remark
1	Device Manager Check	PASS	
2	External USB Keyboard Test	PASS	
3	External USB Mouse Test	PASS	
4	Hot plugging test	PASS	

## 2.8 Serial Port Test

### 1. MS-DOS

Item	Description	Result	Remark
1	RS-232 Mouse Test	PASS	
2	RS-232 Modem Test	PASS	
3	B&B Electronics COM Port RS-232 Test (W/Loop-Back)	PASS	

### 2. Windows Server 2003

Item	Description	Result	Remark
1	Device Manager Check	PASS	
2	RS-232 Mouse Test	PASS	

### 3. Windows XP

Item	Description	Result	Remark
1	Device Manager Check	PASS	
2	RS-232 Mouse Test	PASS	

## 2.9 Keyboard 、 Mouse Test

### 1. MS-DOS

Item	Description	Result	Remark
1	Keyboard LED Status Test	PASS	
2	Keyboard Typing Test	PASS	

### 2. Windows XP

Item	Description	Result	Remark
1	Device Manager Check	PASS	
2	Keyboard Typing Test	PASS	
3	Mouse Detect Test	PASS	

### 3. Windows Server 2003

Item	Description	Result	Remark
1	Device Manager Check	PASS	
2	Keyboard Typing Test	PASS	
3	Mouse Detect Test	PASS	

### 4. Windows Vista

Item	Description	Result	Remark
1	Device Manager Check	PASS	
2	Keyboard Typing Test	PASS	
3	Mouse Detect Test	PASS	



## 2.10 LAN Test

### 1. Windows XP SP2

Item	Description	Result	Remark
1	Device Manager Check	PASS	
2	Data Transfer Test	PASS	

### 2. Windows Server 2003

Item	Description	Result	Remark
1	Device Manager Check	PASS	
2	Data Transfer Test	PASS	

### 3. Windows Vista

Item	Description	Result	Remark
1	Device Manager Check	PASS	
2	Data Transfer Test	PASS	

## 2.11 Power Supply Test

### 1. MS-DOS

Item	Description	Verification	
		Result	Remark
1	ATX Power On/Off	PASS	Seventeam ST-300BLV 300W
2	ATX Power On/Off	PASS	HEC WINDMILL PRO 315W
3	ATX Power On/Off	PASS	Seasonic SS-430-HB 430W

### 2. Windows XP

Item	Description	Verification	
		Result	Remark
1	ATX Power On/Off	PASS	Seventeam ST-300BLV 300W
2	ATX Power On/Off	PASS	HEC WINDMILL PRO 315W
3	ATX Power On/Off	PASS	Seasonic SS-430-HB 430W

### 3. Windows Server 2003

Item	Description	Verification	
		Result	Remark
1	ATX Power On/Off	PASS	Seventeam ST-300BLV 300W
2	ATX Power On/Off	PASS	HEC WINDMILL PRO 315W
3	ATX Power On/Off	PASS	Seasonic SS-430-HB 430W

### 4. Windows Vista

Item	Description	Verification	
		Result	Remark
1	ATX Power On/Off	PASS	Seventeam ST-300BLV 300W
2	ATX Power On/Off	PASS	HEC WINDMILL PRO 315W
3	ATX Power On/Off	PASS	Seasonic SS-430-HB 430W

## 2.12 Floppy Drive Test

<b>Floppy</b>	<b>Operating System</b>	<b>Floppy Drive Detect</b>	<b>Floppy Data Transfer</b>
<b>MITSUMI 353M3</b>	MS-DOS Windows XP SP2 Windows Server 2003	PASS	PASS
<b>MITSUMI 53M3D</b>		PASS	PASS
<b>SONY MPF920-E</b>		PASS	PASS
<b>MITSUMI D353T6</b>		PASS	PASS

## 2.13 Boot Up Test

<b>Item</b>	<b>Description</b>	<b>Result</b>	<b>Remark</b>
1	Soft boot from HDD	PASS	
2	Soft boot from CD-ROM	PASS	
3	Soft boot from Floppy	PASS	
4	Reboot test with Win XP	PASS	
5	Reboot test with Win Server 2003	PASS	

## 2.14 Os Install

<b>Item</b>	<b>Description</b>	<b>Result</b>	<b>Remark</b>
1	Windows Vista	PASS	
2	Windows XP SP2	PASS	
3	Windows Server 2003	PASS	
4	Suse 10.2	PASS	
5	Fedora Code 6	PASS	

## 2.15 Print Port Test

### 1. Window XP

Item	Description	Result	Remark
1	ECP/EPP PRINT TEST	PASS	

### 2. Window 2003

Item	Description	Result	Remark
1	ECP/EPP PRINT TEST	PASS	

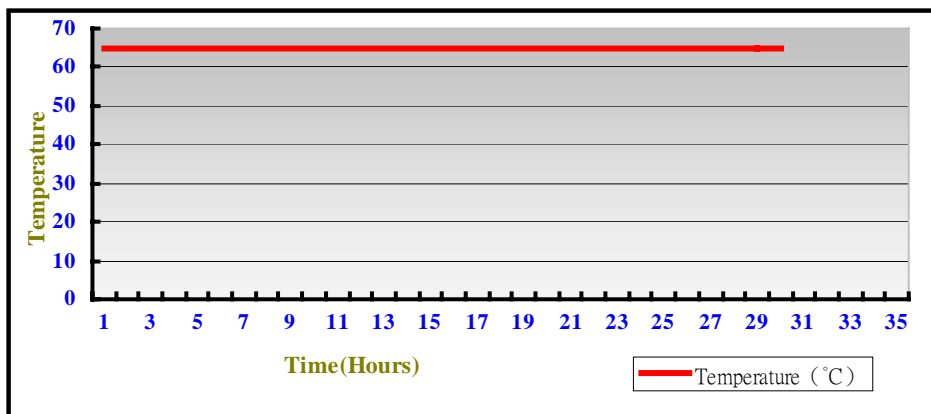
### 3. Environmental test

#### 3.1 Temperature Test

Hardware Device list:

System Board	P4BWA
CPU	Intel Core 2 Quad 2.4GHZ
Memory	Transcend DDRII 533 2GB (K4T1G084QA-ZCD5) Transcend DDRII 533 2GB (ELPIDA E1108AA-5C-E) Transcend DDRII 667 2GB (K4T1G084QA-ZCE6)*2
HDD	Western Digital WD800JD-75MSA3 80GB
Operating OS	Windows XP
Test Equipment	THERMOTRON 2800 Programmer/Controller
Test Program	3DMark 2003

Test Result:



Boot Up Test:

Temperature	Result	Remark
-20°C	PASS	50 Times
70°C	PASS	50 Times

## 4. Reliability Test

### 4.1 Power Consumption Test

#### 1. Test Environment:

CPU	<b>Intel Core 2 Quad 2.4GHZ</b>
Memory	Transcend DDRII 800 1GB (K4T51083QC) X 4
HDD	Western Digital WD800JD-75MSA3 80GB
Test OS	<b>Windows XP</b>
Test Program	<b>3DMARK 2003</b>

#### Test Result:

Voltage	Current ( A )	Power ( W )	Remark
<b>12V</b>	5.98	71.76	
<b>5V</b>	4.79	23.95	
<b>3.3V</b>	7.57	24.981	
<b>5VSB</b>	0.01	0.05	

#### 2. Test Environment:

CPU	<b>Intel Core 2 Quad 2.4GHZ</b>
Memory	Transcend DDRII 533 2GB (K4T1G084QA-ZCD5) Transcend DDRII 667 2GB (K4T1G084QA-ZCE6)
HDD	Western Digital WD800JD-75MSA3 80GB
Test OS	<b>Windows XP</b>
Test Program	<b>3DMARK 2003</b>

#### Test Result:

Voltage	Current ( A )	Power ( W )	Remark
<b>12V</b>	5.76	69.12	
<b>5V</b>	4.36	21.8	
<b>3.3V</b>	7.35	24.255	
<b>5VSB</b>	0.01	0.05	

### 3.Test Environment:

CPU	<b>Intel Core 2 Quad 2.4GHZ</b>
Memory	Transcend DDRII 667 2GB (K4T1G084QA-ZCE6) Transcend DDRII 667 2GB (K4T1G084QA-ZCE6)
HDD	Western Digital WD800JD-75MSA3 80GB
Test OS	<b>Windows XP</b>
Test Program	<b>3DMARK 2003</b>

### Test Result:

Voltage	Current ( A )	Power ( W )	Remark
<b>12V</b>	5.83	69.96	
<b>5V</b>	5.28	26.4	
<b>3.3V</b>	7.58	25.014	
<b>5VSB</b>	0.01	0.05	

### 4.Test Environment:

CPU	<b>Intel PENTIUM 4 3.4GHZ</b>
Memory	Transcend DDRII 800 1GB (K4T51083QC) X 4
HDD	Western Digital WD800JD-75MSA3 80GB
Test OS	<b>Windows XP</b>
Test Program	<b>3DMARK 2003</b>

### Test Result:

Voltage	Current ( A )	Power ( W )	Remark
<b>12V</b>	7.45	89.4	
<b>5V</b>	6.88	34.4	
<b>3.3V</b>	5.44	17.952	
<b>5VSB</b>	0.01	0.05	

**5.Test Environment:**

CPU	<b>Intel PENTIUM 4 3.4GHZ</b>
Memory	Transcend DDRII 667 2GB (K4T1G084QA-ZCE6) Transcend DDRII 667 2GB (K4T1G084QA-ZCE6)
HDD	Western Digital WD800JD-75MSA3 80GB
Test OS	<b>Windows XP</b>
Test Program	<b>3DMARK 2003</b>

**Test Result:**

<b>Voltage</b>	<b>Current ( A )</b>	<b>Power ( W )</b>	<b>Remark</b>
<b>12V</b>	5.75	69	
<b>5V</b>	6.55	32.75	
<b>3.3V</b>	5.25	17.325	
<b>5VSB</b>	0.01	0.05	

**6.Test Environment:**

CPU	<b>Intel Core 2 Duo 1.86GHZ</b>
Memory	Transcend DDRII 800 1GB (K4T51083QC) X 4
HDD	Western Digital WD800JD-75MSA3 80GB
Test OS	<b>Windows XP</b>
Test Program	<b>3DMARK 2003</b>

**Test Result:**

<b>Voltage</b>	<b>Current ( A )</b>	<b>Power ( W )</b>	<b>Remark</b>
<b>12V</b>	3.10	37.2	
<b>5V</b>	6.82	34.1	
<b>3.3V</b>	7.48	24.684	
<b>5VSB</b>	0.01	0.05	



**7.Test Environment:**

CPU	<b>Intel Core 2 Duo 1.86GHZ</b>
Memory	Transcend DDRII 667 2GB (K4T1G084QA-ZCE6) Transcend DDRII 667 2GB (K4T1G084QA-ZCE6)
HDD	Western Digital WD800JD-75MSA3 80GB
Test OS	<b>Windows XP</b>
Test Program	<b>3DMARK 2003</b>

**Test Result:**

<b>Voltage</b>	<b>Current ( A )</b>	<b>Power ( W )</b>	<b>Remark</b>
<b>12V</b>	2.72	32.64	
<b>5V</b>	3.71	18.55	
<b>3.3V</b>	7.23	23.859	
<b>5VSB</b>	0.01	0.05	

**8.Test Environment:**

Motherboard	<b>P4BWA</b>
CPU	<b>Intel Core 2 Quad 2.4GHZ</b>
Memory	Transcend DDRII 800 1GB (K4T51083QC) X 4
Power Supply	<b>Seventeam ST-300WAP</b>

<b>Voltage</b>	<b>Current ( A )</b>	<b>Power ( W )</b>	<b>Remark</b>
<b>12V</b>	5.13	61.56	Boot Up
<b>5V</b>	4.87	24.35	Boot Up
<b>3.3V</b>	4.14	13.662	Boot Up
<b>5Vsb</b>	0.01	0.05	Boot Up

**9.Test Environment:**

Motherboard	<b>P4BWA</b>
CPU	<b>Intel PENTIUM 4 3.4GHZ</b>
Memory	Transcend DDRII 800 1GB (K4T51083QC) X 4
Power Supply	<b>Seventeam ST-300WAP</b>

<b>Voltage</b>	<b>Current ( A )</b>	<b>Power ( W )</b>	<b>Remark</b>
<b>12V</b>	6.33	75.96	Boot Up
<b>5V</b>	4.51	22.55	Boot Up
<b>3.3V</b>	4.07	13.431	Boot Up
<b>5Vsb</b>	0.01	0.05	Boot Up

**10.Test Environment:**

Motherboard	<b>P4BWA</b>
CPU	<b>Intel Core 2 Duo 1.86GHZ</b>
Memory	Transcend DDRII 800 1GB (K4T51083QC) X 4
Power Supply	<b>Seventeam ST-300WAP</b>

<b>Voltage</b>	<b>Current ( A )</b>	<b>Power ( W )</b>	<b>Remark</b>
<b>12V</b>	2.42	29.04	Boot Up
<b>5V</b>	4.63	23.15	Boot Up
<b>3.3V</b>	4.14	13.662	Boot Up
<b>5Vsb</b>	0.01	0.05	Boot Up

## 4.2 Thermal measurements at various points on the board

### Test Environment :

CPU	<b>Intel Core 2 Quad 2.4GHZ</b>
Memory	Transcend DDRII 667 2GB (K4T1G084QA-ZCE6) Transcend DDRII 667 2GB (K4T1G084QA-ZCE6)
HDD	Western Digital WD800JD-75MSA3 80GB
Power	Seventeam ST-300WAP
Operating System	Windows XP
Test Program	3D WinMark2003

### Test Result:

CPU	28.7°C
Q965 (Northbridge)	39.3°C
ICH8DO (Southbridge)	48.3°C
U5	31.5°C
LPCIO	36.4°C
U7	29.4°C
Q31	46.1°C
U18	41.6°C
Q42	58.7°C

## 5. Performance Test

### 5.1 Business Win Stone 2004

Windows XP SP2

WEIGHTED SUITE	Test Environment	Result	Remark
<b>Business Win stone2004</b>	Intel PENTIUM 4 3.4GHZ	Pass	
	Transcend DDRII 667 2GB (K4T1G084QA-ZCE6)		
	Transcend DDRII 533 2GB (K4T1G084QA-ZCD5)		14.8
	Kingston DDRII 800 2GB (V59C1512804QBF25)		14.4
	Kingston DDRII 533 1GB (HY5PS12821B)		18.8
	Western Digital WD800JD-75MSA3 80GB		17.6
<b>Business Win stone2004</b>	Intel PENTIUM D 2.8GHZ	Pass	
	Transcend DDRII 667 2GB (K4T1G084QA-ZCE6)		
	Transcend DDRII 533 2GB (K4T1G084QA-ZCD5)		15.5
	Kingston DDRII 800 2GB (V59C1512804QBF25)		13.8
	Kingston DDRII 533 1GB (HY5PS12821B)		16.5
	Western Digital WD800JD-75MSA3 80GB		18
	15.6		

## 5.2 Content Creation Winstone 2003

### Windows XP XP2

WEIGHTED SUITE	Test Environment	Result	Remark
<b>Content Creation Winstone 2003</b>	Intel PENTIUM D 2.8GHZ	Pass	53.6
	Transcend DDRII 667 2GB (K4T1G084QA-ZCE6)		54.4
	Transcend DDRII 533 2GB (K4T1G084QA-ZCD5)		54.2
	Kingston DDRII 800 2GB (V59C1512804QBF25)		55
	Kingston DDRII 533 1GB (HY5PS12821B)		53.6
	Western Digital WD800JD-75MSA3 80GB		

### Windows XP XP2

WEIGHTED SUITE	Test Environment	Result	Remark
<b>Content Creation Winstone 2003</b>	Intel Core 2 Duo 1.86GHZ	Pass	62.8
	Transcend DDRII 667 2GB (K4T1G084QA-ZCE6)		59.6
	Transcend DDRII 533 2GB (K4T1G084QA-ZCD5)		64.1
	Kingston DDRII 800 2GB (V59C1512804QBF25)		63.4
	Kingston DDRII 533 1GB (HY5PS12821B)		63.7
	Western Digital WD800JD-75MSA3 80GB		

**Windows XP XP2**

<b>WEIGHTED SUITE</b>	<b>Test Environment</b>	<b>Result</b>	<b>Remark</b>
<b>Content Creation Winstone 2003</b>	Intel Core 2 Duo 1.86GHZ	Pass	74.6
	Transcend DDRII 667 2GB		76.2
	(K4T1G084QA-ZCE6)		75.7
	Transcend DDRII 533 2GB		76.2
	(K4T1G084QA-ZCD5)		75.6
	Kingston DDRII 800 2GB		
	(V59C1512804QBF25)		
Kingston DDRII 533 1GB			
(HY5PS12821B)			
Western Digital			
WD800JD-75MSA3 80GB			

**5.3 Content Creation Winstone 2004****Windows XP XP2**

<b>WEIGHTED SUITE</b>	<b>Test Environment</b>	<b>Result</b>	<b>Remark</b>
<b>Content Creation Winstone 2004</b>	Intel PENTIUM D 2.8GHZ	Pass	28.7
	Transcend DDRII 667 2GB		28.6
	(K4T1G084QA-ZCE6)		28.7
	Transcend DDRII 533 2GB		28.7
	(K4T1G084QA-ZCD5)		28.6
	Kingston DDRII 800 2GB		
	(V59C1512804QBF25)		
Kingston DDRII 533 1GB			
(HY5PS12821B)			
Western Digital			
WD800JD-75MSA3 80GB			

## 5.4 3D MARK

### Windows XP SP2

WEIGHTED SUITE	Test Environment	Result	Remark
<b>3DMARK2001 Scores</b>	Intel Core 2 Duo 1.86GHZ Transcend DDRII 667 2GB (K4T1G084QA-ZCE6)	Pass	5994
<b>3DMARK2003 Scores</b>	Transcend DDRII 667 2GB (K4T1G084QA-ZCE6) Western Digital WD800JD-75MSA3	Pass	1837
<b>3DMARK2005 Scores</b>	80GB	Pass	735

### Windows XP SP2

WEIGHTED SUITE	Test Environment	Result	Remark
<b>3DMARK2001 Scores</b>	Intel PENTIUM 4 3.4GHZ Transcend DDRII 667 2GB (K4T1G084QA-ZCE6)	Pass	4731
<b>3DMARK2003 Scores</b>	Transcend DDRII 667 2GB (K4T1G084QA-ZCE6)	Pass	1349
<b>3DMARK2005 Scores</b>	Western Digital WD800JD-75MSA3 80GB	Pass	539

**Windows XP SP2**

<b>WEIGHTED SUITE</b>	<b>Test Environment</b>	<b>Result</b>	<b>Remark</b>
<b>3DMARK2001 Scores</b>	Intel PENTIUM D 2.8GHZ Transcend DDRII 667 2GB (K4T1G084QA-ZCE6)	Pass	4082
<b>3DMARK2003 Scores</b>	Transcend DDRII 533 2GB (K4T1G084QA-ZCD5)	Pass	1268
<b>3DMARK2005 Scores</b>	Western Digital WD800JD-75MSA3 80GB	Pass	545

**Windows XP SP2**

<b>WEIGHTED SUITE</b>	<b>Test Environment</b>	<b>Result</b>	<b>Remark</b>
<b>3DMARK2001 Scores</b>	Intel PENTIUM 4 3.4GHZ Transcend DDRII 667 2GB (K4T1G084QA-ZCE6)	Pass	4372
<b>3DMARK2003 Scores</b>	Transcend DDRII 533 2GB (K4T1G084QA-ZCD5) Kingston DDRII 800 2GB (V59C1512804QBF25)	Pass	1231
<b>3DMARK2005 Scores</b>	Kingston DDRII 533 1GB (HY5PS12821B) Western Digital WD800JD-75MSA3 80GB	Pass	514



## 5.5 3D MARK2006

### Windows XP SP2

Item	WEIGHTED SUITE	Test Environment	Result	Remark
1	3DMARK Source	Intel Core 2 Duo 1.86GHZ	Pass	282
2	SM2.0 Source	Transcend DDRII 667 2GB (K4T1G084QA-ZCE6)	Pass	129
3	HDR/SM3.0 Source	Transcend DDRII 667 2GB (K4T1G084QA-ZCE6) Western Digital	Pass	N/A
4	CPU Source	WD800JD-75MSA3 80GB	Pass	1592

### Windows XP SP2

Item	WEIGHTED SUITE	Test Environment	Result	Remark
1	3DMARK Source	Intel PENTIUM 4 3.4GHZ Transcend DDRII 667 2GB (K4T1G084QA-ZCE6)	Pass	218
2	SM2.0 Source	Transcend DDRII 667 2GB (K4T1G084QA-ZCE6)	Pass	101
3	HDR/SM3.0 Source	Western Digital WD800JD-75MSA3 80GB	Pass	N/A
4	CPU Source		Pass	896

### Windows XP SP2

Item	WEIGHTED SUITE	Test Environment	Result	Remark
1	3DMARK Source	Intel PENTIUM D 2.8GHZ Transcend DDRII 667 2GB (K4T1G084QA-ZCE6)	Pass	207
2	SM2.0 Source	Transcend DDRII 533 2GB (K4T1G084QA-ZCD5)	Pass	94
3	HDR/SM3.0 Source	Western Digital WD800JD-75MSA3 80GB	Pass	N/A
4	CPU Source		Pass	1362

**Windows XP SP2**

<b>Item</b>	<b>WEIGHTED SUITE</b>	<b>Test Environment</b>	<b>Result</b>	<b>Remark</b>
1	<b>3DMARK Source</b>	Intel PENTIUM 4 3.4GHZ Transcend DDRII 667 2GB (K4T1G084QA-ZCE6)	Pass	201
2	<b>SM2.0 Source</b>	Transcend DDRII 533 2GB (K4T1G084QA-ZCD5) Kingston DDRII 800 2GB (V59C1512804QBF25)	Pass	92
3	<b>HDR/SM3.0 Source</b>	Kingston DDRII 533 1GB (HY5PS12821B)	Pass	N/A
4	<b>CPU Source</b>	Western Digital WD800JD-75MSA3 80GB	Pass	893

## 5.6 PC MARK2002

<b>Test Environment</b>
Intel Core 2 Duo 1.86GHZ Transcend DDRII 667 2GB (K4T1G084QA-ZCE6) Transcend DDRII 667 2GB (K4T1G084QA-ZCE6) Western Digital WD800JD-75MSA3 80GB

### Windows XP SP2

<b>Item</b>	<b>WEIGHTED SUITE</b>	<b>Result</b>	<b>Remark</b>
1	CPU test Source	Pass	7344
2	Memory test Source	Pass	15795
3	HDD test Source	Pass	1248

<b>Test Environment</b>
Intel PENTIUM 4 3.4GHZ Transcend DDRII 667 2GB (K4T1G084QA-ZCE6) Transcend DDRII 667 2GB (K4T1G084QA-ZCE6) Western Digital WD800JD-75MSA3 80GB

### Windows XP SP2

<b>Item</b>	<b>WEIGHTED SUITE</b>	<b>Result</b>	<b>Remark</b>
1	CPU test Source	Pass	6358
2	Memory test Source	Pass	11255
3	HDD test Source	Pass	1351

<b>Test Environment</b>
Intel PENTIUM D 2.8GHZ Transcend DDRII 667 2GB (K4T1G084QA-ZCE6) Transcend DDRII 533 2GB (K4T1G084QA-ZCD5) Western Digital WD800JD-75MSA3 80GB

**Windows XP SP2**

<b>Item</b>	<b>WEIGHTED SUITE</b>	<b>Result</b>	<b>Remark</b>
1	CPU test Source	Pass	5972
2	Memory test Source	Pass	9776
3	HDD test Source	Pass	1382

<b>Test Environment</b>
Intel PENTIUM 4 3.4GHZ Transcend DDRII 667 2GB (K4T1G084QA-ZCE6) Transcend DDRII 533 2GB (K4T1G084QA-ZCD5) Kingston DDRII 800 2GB (V59C1512804QBF25) Kingston DDRII 533 1GB (HY5PS12821B) Western Digital WD800JD-75MSA3 80GB

**Windows XP SP2**

<b>Item</b>	<b>WEIGHTED SUITE</b>	<b>Result</b>	<b>Remark</b>
1	CPU test Source	Pass	6325
2	Memory test Source	Pass	10131
3	HDD test Source	Pass	1361

## 5.7 PC MARK2004

<b>Test Environment</b>
Intel Core 2 Duo 1.86GHZ Transcend DDRII 667 2GB (K4T1G084QA-ZCE6) Transcend DDRII 667 2GB (K4T1G084QA-ZCE6) Western Digital WD800JD-75MSA3 80GB

### Windows XP

<b>Item</b>	<b>WEIGHTED SUITE</b>	<b>Result</b>	<b>Remark</b>
1	System test Source	Pass	5976
2	CPU test Source	Pass	6315
3	Memory test Source	Pass	5789
4	Graphic test Source	Pass	1822
5	HDD test Source	Pass	4754

<b>Test Environment</b>
Intel PENTIUM 4 3.4GHZ Transcend DDRII 667 2GB (K4T1G084QA-ZCE6) Transcend DDRII 667 2GB (K4T1G084QA-ZCE6) Western Digital WD800JD-75MSA3 80GB

### Windows XP

<b>Item</b>	<b>WEIGHTED SUITE</b>	<b>Result</b>	<b>Remark</b>
1	System test Source	Pass	4350
2	CPU test Source	Pass	4643
3	Memory test Source	Pass	5054
4	Graphic test Source	Pass	1645
5	HDD test Source	Pass	4738

<b>Test Environment</b>
Intel PENTIUM D 2.8GHZ Transcend DDRII 667 2GB (K4T1G084QA-ZCE6) Transcend DDRII 533 2GB (K4T1G084QA-ZCD5) Western Digital WD800JD-75MSA3 80GB

**Windows XP**

<b>Item</b>	<b>WEIGHTED SUITE</b>	<b>Result</b>	<b>Remark</b>
1	System test Source	Pass	5081
2	CPU test Source	Pass	5648
3	Memory test Source	Pass	4382
4	Graphic test Source	Pass	1484
5	HDD test Source	Pass	4751

<b>Test Environment</b>
Intel PENTIUM 4 3.4GHZ Transcend DDRII 667 2GB (K4T1G084QA-ZCE6) Transcend DDRII 533 2GB (K4T1G084QA-ZCD5) Kingston DDRII 800 2GB (V59C1512804QBF25) Kingston DDRII 533 1GB (HY5PS12821B) Western Digital WD800JD-75MSA3 80GB

**Windows XP**

<b>Item</b>	<b>WEIGHTED SUITE</b>	<b>Result</b>	<b>Remark</b>
1	System test Source	Pass	4225
2	CPU test Source	Pass	4665
3	Memory test Source	Pass	4511
4	Graphic test Source	Pass	1552
5	HDD test Source	Pass	4746

## 5.8 PC MARK2005

<b>Test Environment</b>
Intel Core 2 Duo 1.86GHZ Transcend DDRII 667 2GB (K4T1G084QA-ZCE6) Transcend DDRII 667 2GB (K4T1G084QA-ZCE6) Western Digital WD800JD-75MSA3 80GB

### Windows XP SP2

<b>Item</b>	<b>WEIGHTED SUITE</b>	<b>Result</b>	<b>Remark</b>
1	System test Source	Pass	3842
2	CPU test Source	Pass	4786
3	Memory test Source	Pass	4321
4	Graphic test Source	Pass	1601
5	HDD test Source	Pass	4984

<b>Test Environment</b>
Intel PENTIUM 4 3.4GHZ Transcend DDRII 667 2GB (K4T1G084QA-ZCE6) Transcend DDRII 667 2GB (K4T1G084QA-ZCE6) Western Digital WD800JD-75MSA3 80GB

### Windows XP SP2

<b>Item</b>	<b>WEIGHTED SUITE</b>	<b>Result</b>	<b>Remark</b>
1	System test Source	Pass	3004
2	CPU test Source	Pass	3754
3	Memory test Source	Pass	3874
4	Graphic test Source	Pass	1488
5	HDD test Source	Pass	4966

<b>Test Environment</b>
Intel PENTIUM D 2.8GHZ Transcend DDRII 667 2GB (K4T1G084QA-ZCE6) Transcend DDRII 533 2GB (K4T1G084QA-ZCD5) Western Digital WD800JD-75MSA3 80GB

**Windows XP SP2**

<b>Item</b>	<b>WEIGHTED SUITE</b>	<b>Result</b>	<b>Remark</b>
1	System test Source	Pass	3267
2	CPU test Source	Pass	4637
3	Memory test Source	Pass	3634
4	Graphic test Source	Pass	1251
5	HDD test Source	Pass	5028

<b>Test Environment</b>
Intel PENTIUM 4 3.4GHZ Transcend DDRII 667 2GB (K4T1G084QA-ZCE6) Transcend DDRII 533 2GB (K4T1G084QA-ZCD5) Kingston DDRII 800 2GB (V59C1512804QBF25) Western Digital WD800JD-75MSA3 80GB

**Windows XP SP2**

<b>Item</b>	<b>WEIGHTED SUITE</b>	<b>Result</b>	<b>Remark</b>
1	System test Source	Pass	2991
2	CPU test Source	Pass	3775
3	Memory test Source	Pass	3767
4	Graphic test Source	Pass	1388
5	HDD test Source	Pass	5027