

MP-6010

User's Manual

Edition 1.1

2009/08/24



Copyright

Copyright 2008 all rights reserved. This document is copyrighted and all rights are reserved. The information in this document is subject to change without prior notice to make improvements to the products.

This document contains proprietary information and protected by copyright. No part of this document may be reproduced, copied, or translated in any form or any means without prior written permission of the manufacturer.

All trademarks and/or registered trademarks contains in this document are property of their respective owners.

Disclaimer

The company shall not be liable for any incidental or consequential damages resulting from the performance or use of this product.

The company does not issue a warranty of any kind, express or implied, including without limitation implied warranties of merchantability or fitness for a particular purpose.

The company has the right to revise the manual or include changes in the specifications of the product described within it at any time without notice and without obligation to notify any person of such revision or changes.

Trademark

All trademarks are the property of their respective holders.

Any questions please visit our website at <http://www.commell.com.tw>.

Packing List:

Hardware:

MP-6010 Mini-PCI Capture Card x1

Cable kit:

D-SUB 9 Cable x 2
(OALES-BKU12)



4 Channel video and audio input Cable x 1
(OALDB9-BR4)



**video and audio output Cable x 1
(OALAVE)**



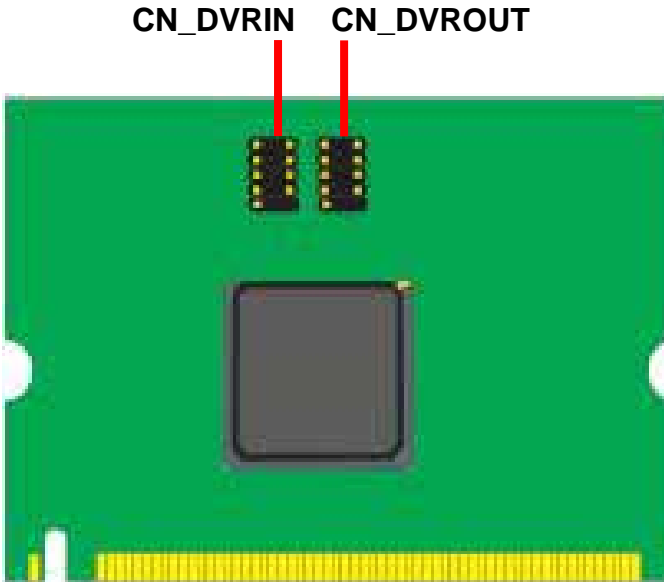
CD Content:

Drivers & User's Manual

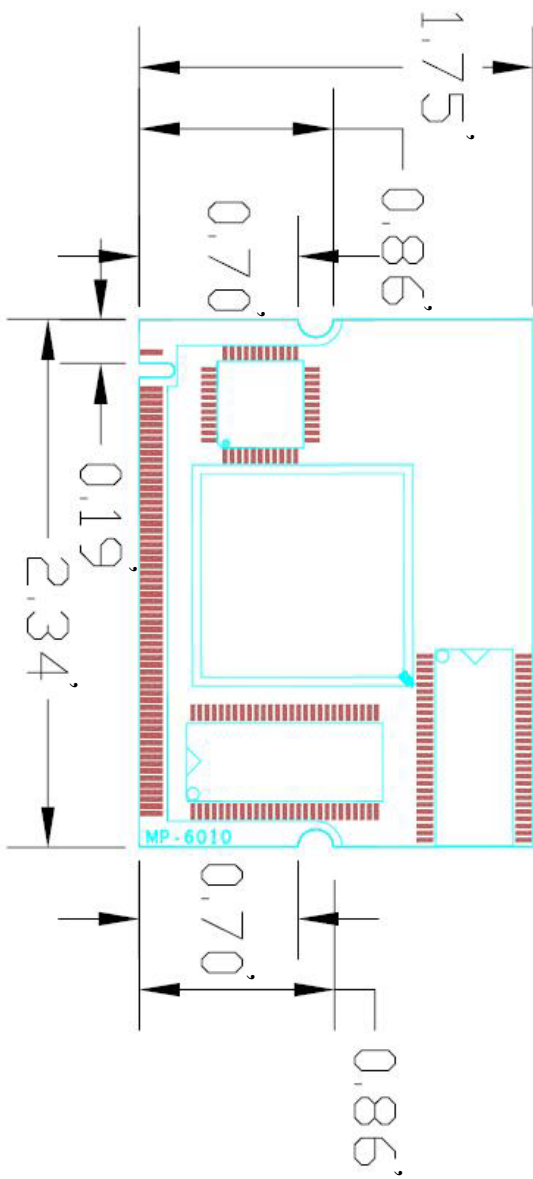
1.0 <Product Specification>

General Specification	
Form Factor	Mini-PCI Type III B with 124-pin interface
Video Decode Chipset	Softlogic solo6010-4
Accessories	2 x 10-pin header to D-SUB 9 Cable 1 x 4 Channel video and audio input Cable 1 x video and audio output Cable
Features	MPEG4 hardware compression Video Capture Card 4 Channel Video & Audio inputs MAX resolution: NTSC at 704*480 PAL at 704*576

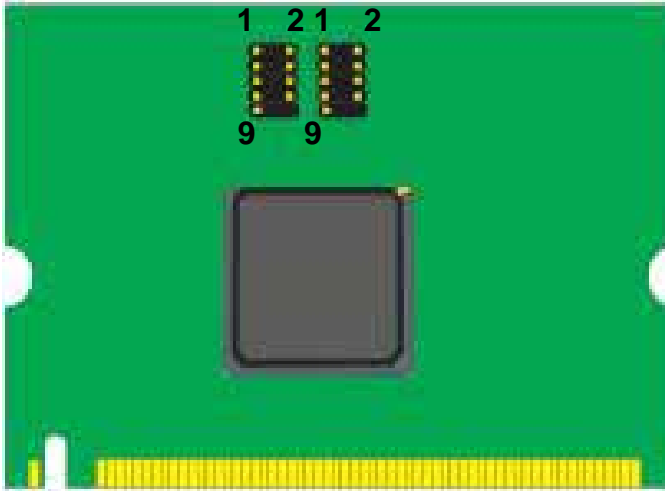
1.1 <Component Placement>



1.2 <Mechanical Drawing>



1.3 <Connector Reference>

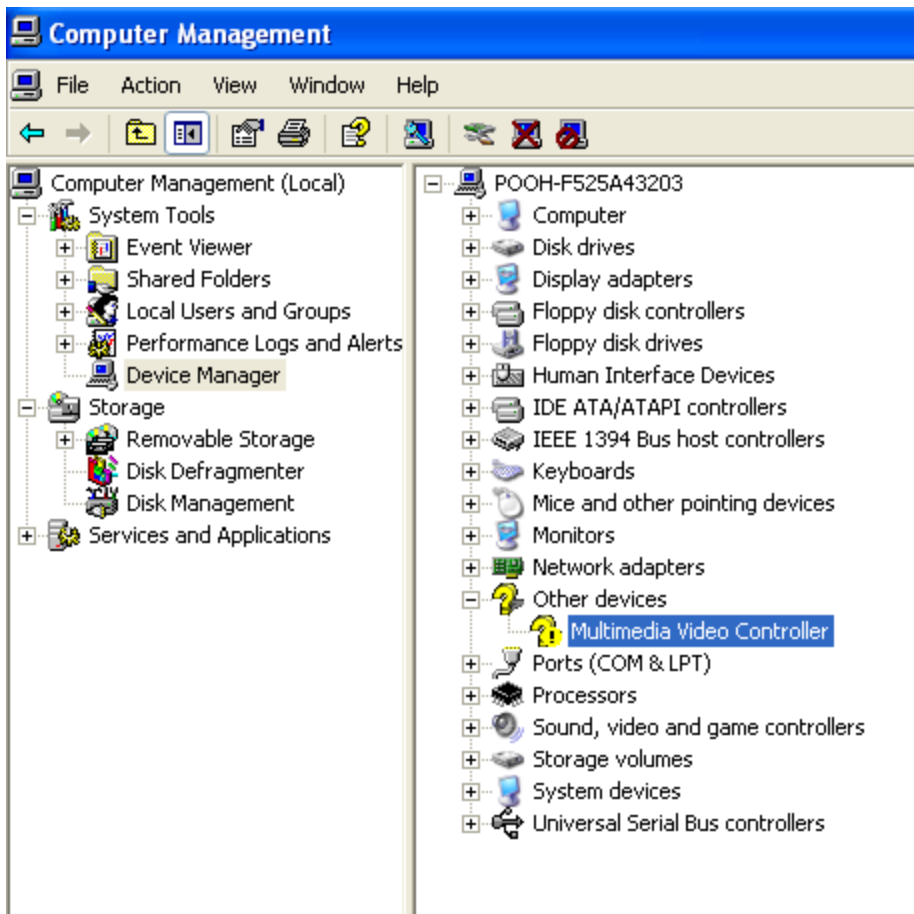


Connector: CN_DVRIN & CN_DVROUT
 Type: 10-pin (5x2) header(1.27mm) X 2

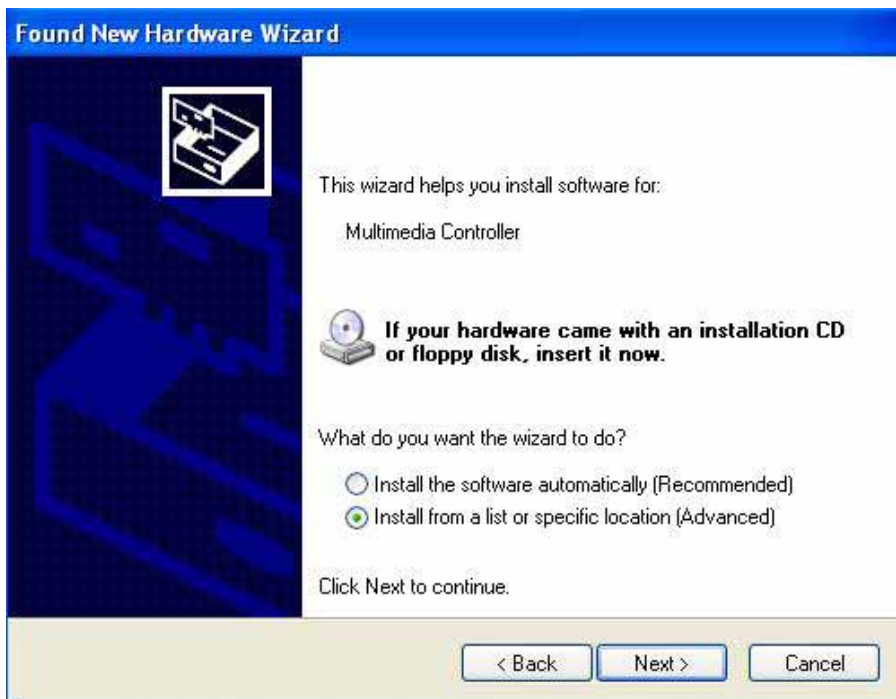
Pin	Description	Pin	Description
1	P_VI_CH1	2	P_VI_CH2
3	P_VI_CH3	4	P_VI_CH4
5	Ground	6	P_AI_CH1
7	P_AI_CH2	8	P_AI_CH3
9	P_AI_CH4	10	N/C
1	Ground	2	Composite_OUT
3	Ground	4	Y_OUT
5	Ground	6	C_OUT
7	Ground	8	AudioL_OUT
9	AudioR_OUT	10	N/C

1.4 <Driver Setting>

1. Copy the CD Driver folder to disk, Ex: C:\ , D:\ ...
2. Please choose **Device Manager** then you can see **other devices**



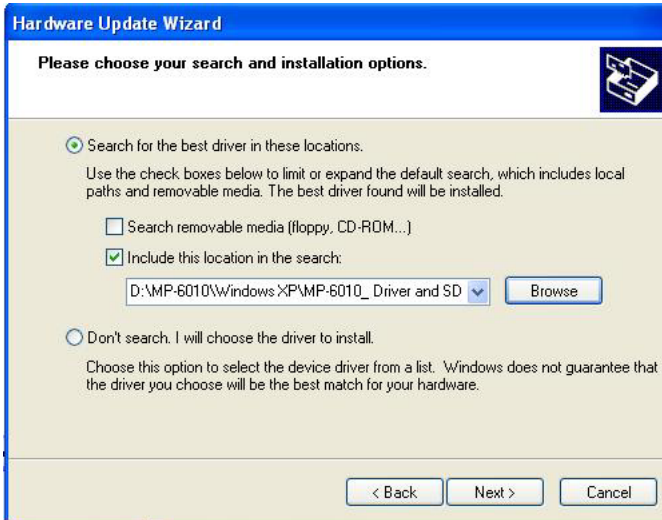
3. Please choose **Multimedia Controller** then press **advanced**



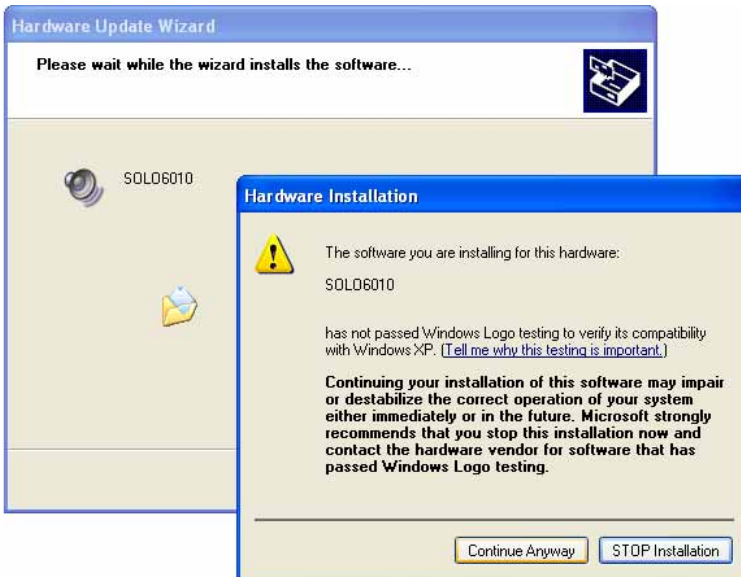
4. Please select file location

D:\MP-6010\WindowXP

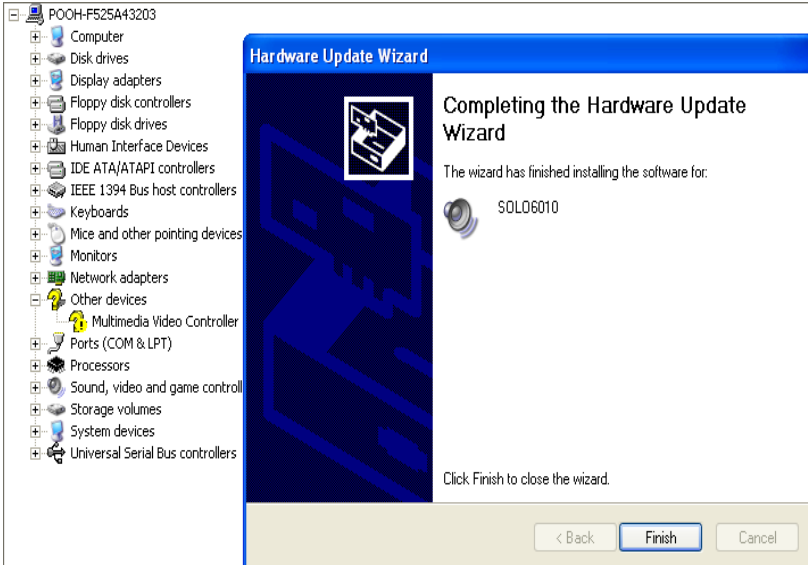
\MP-6010_Driver and SDK Non-support DirectShow
\Driver_090505



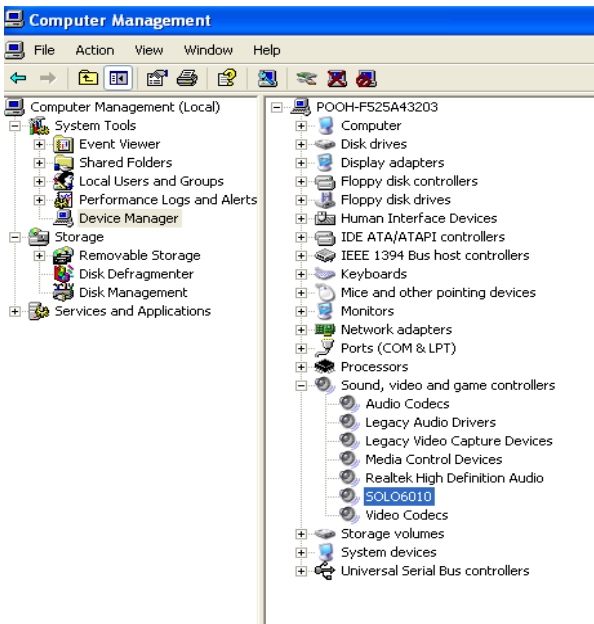
5. Please press **continue anyway**



6. Press Finish



7. Driver install succeed

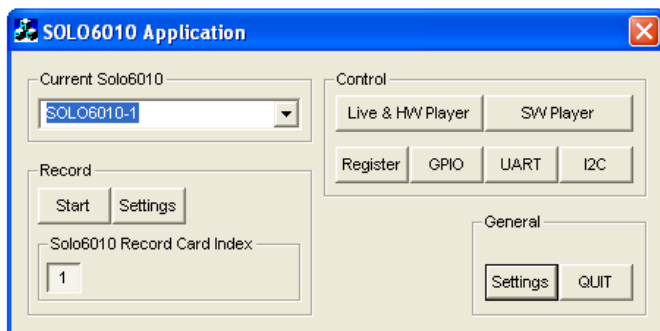
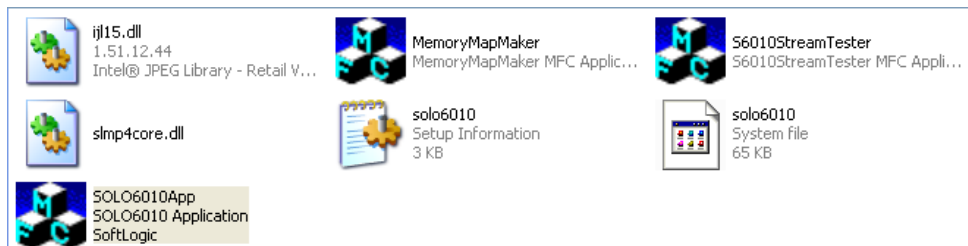


1.5 <Application Setting & Functions>

1. Please select SDK location

**D:\MP-6010\WindowXPMP-6010_Driver and SDK
Non-support DirectShow\SDK\bin**

then press SOLO6010App



2.Press General Setting

Live Display Mode select

5. Memory to Overlay , 60 field/sec or

6. Memory to Overlay , 30 frame/sec

VGA Card select Intel Onboard VGA



3.Main Function

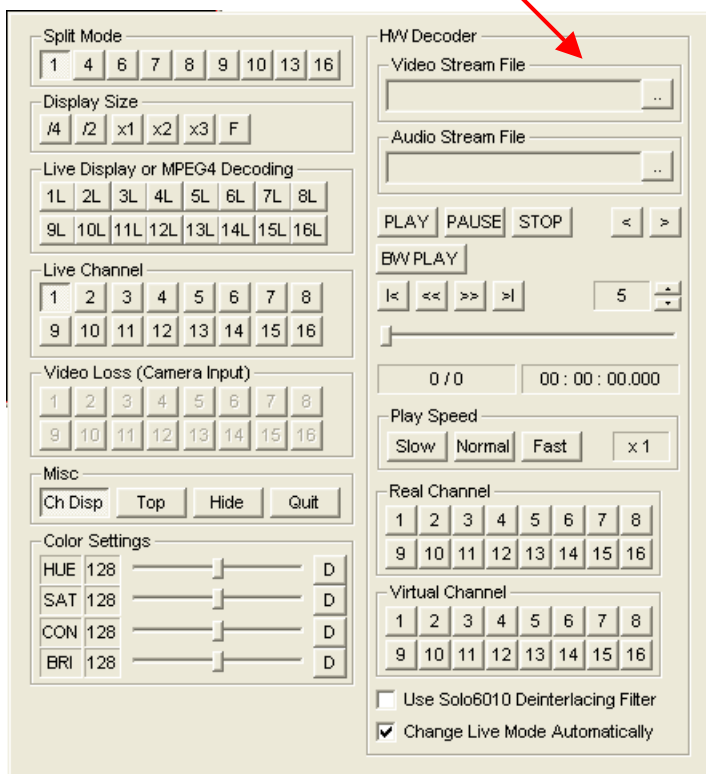
1. Live & HW player

The live display and hardware player can be tested using this function

Load file

video → xxx.MR4

audio → xxx.RG7

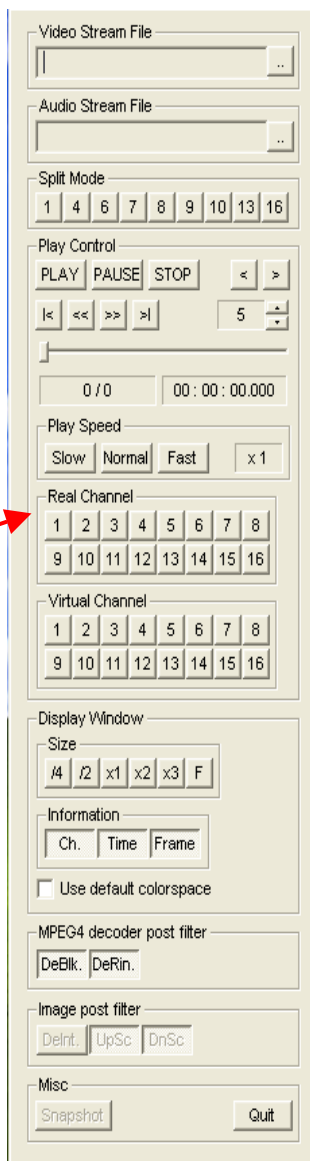


2. SW player

The recorded MPEG4 file can be played back using this function

Select audio channel

The audio played back only one channel



Record setting

FPS → 60 FOR test

Video channel

audio channel

	Quality	GOP	Ing. Size	FPS	I.B.P.	Bitrate	CBR Buffer	JPEO
All		0						All
1	3	15	704x240 Field	60		VBR	5 sec	1
2	3	15	704x240 Field	60		VBR	5 sec	2
3	3	15	704x240 Field	60		VBR	5 sec	3
4	3	15	704x240 Field	60		VBR	5 sec	4
5	3	15	704x240 Field	60		VBR	5 sec	5
6	3	15	704x240 Field	60		VBR	5 sec	6
7	3	15	704x240 Field	60		VBR	5 sec	7
8	3	15	704x240 Field	60		VBR	5 sec	8
9	3	15	704x240 Field	60		VBR	5 sec	9
10	3	15	704x240 Field	60		VBR	5 sec	10
11	3	15	704x240 Field	60		VBR	5 sec	11
12	3	15	704x240 Field	60		VBR	5 sec	12
13	3	15	704x240 Field	60		VBR	5 sec	13
14	3	15	704x240 Field	60		VBR	5 sec	14
15	3	15	704x240 Field	60		VBR	5 sec	15
16	3	15	704x240 Field	60		VBR	5 sec	16

Contact Information

Any advice or comment about our products and service, or anything we can help you please don't hesitate to contact with us. We will do our best to support you for your products, projects and business.

Taiwan Commate Computer Inc.

Address	8F, No. 94, Sec. 1, Shin Tai Wu Rd., Shi Chih Taipei Hsien, Taiwan
TEL	+886-2-26963909
FAX	+886-2-26963911
Website	http://www.commell.com.tw
E-Mail	info@commell.com.tw (General Information) tech@commell.com.tw (Technical Support)

Commell is the trademark of Taiwan Commate Computer INC.