

MP-878D Series

Mini-PCI Video Capture Card

User's Manual



Edition	Release Date
1.0	2007/01/25
1.1	2008/06/10
1.2	2008/09/22
1.3	2009/06/29

Copyright

Copyright 2008, all rights reserved. This document is copyrighted and all rights are reserved. The information in this document is subject to change without prior notice to make improvements to the products.

This document contains proprietary information and protected by copyright. No part of this document may be reproduced, copied, or translated in any form or any means without prior written permission of the manufacturer.

All trademarks and/or registered trademarks contains in this document are property of their respective owners.

Disclaimer

The company shall not be liable for any incidental or consequential damages resulting from the performance or use of this product.

The company does not issue a warranty of any kind, express or implied, including without limitation implied warranties of merchantability or fitness for a particular purpose. The company has the right to revise the manual or include changes in the specifications of the product described within it at any time without notice and without obligation to notify any person of such revision or changes.

Trademark

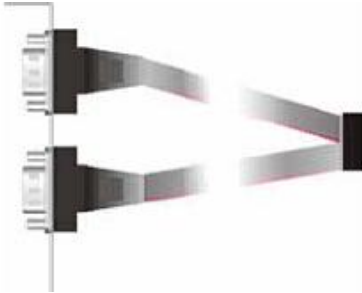
All trademarks are the property of their respective holders.

Any questions please visit our website at <http://www.commell.com.tw>

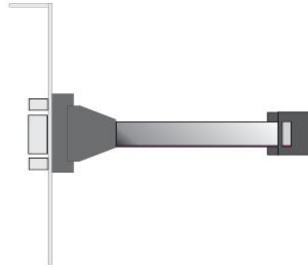
Packing List:

Please check the package content before you starting using the board.

Cable Kits:



Dual D-SUB 9 Cable x 1 (MP-878D8 only)

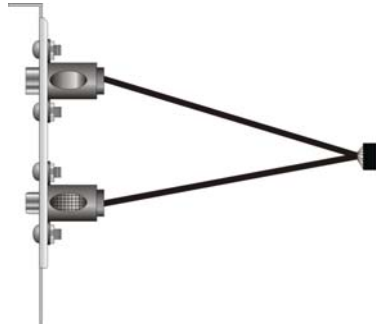


D-SUB 9 Cable x 1 (MP-878D4 only)



4 BNC Cable x 2 (MP-878D8 only)

4 BNC Cable x 1 (MP-878D4 only)



Composite and S-video Cable x1 (MP-878D only)

Composite and S-video Cable x2 (MP-878D2 only)

Hardware:

- ◆ 1 x MP-878 series Mini-PCI Video Capture card
- ◆ 1 x Cable support S-video & Composite for MP-878D
- ◆ 2 x Cable support S-video & Composite for MP-878D2
- ◆ 1 x BNC cable & 10-pin header to D-sub 9-pin cable for MP-878D4
- ◆ 2 x BNC cable & 10-pin header to D-sub 9-pin cable for MP-878D8
- ◆ 1 x Utility CD

Index

Chapter 1 <Introduction>.....6

 1.1 <Product Overview>..... 6

 1.2 <Hardware requirement> 6

 1.3 <Software requirement>..... 6

 1.4 <Dimensions> 7

 1.5 <Hardware Interface > 8

 1.6 <Hardware installation > 8

 1.7 <Software installation >..... 9

 1.8 <Sample Program> 20

 1.9 <How to Get the video> (Based on MP-878D /D2 /D4 /D8) : 25

Contact Information 30

(This Page is left for Blank)

Chapter 1 <Introduction>

1.1 <Product Overview>

COMMELL MP-878D series is a Video input Video Capture Card. That supports up to D1 resolution at 30/25 fps (one Chip). Also MP-878D/D4 series supports NTSC/PAL signals.(MP-878D2/D8 is allow 2 Cards which installed in one PC system. If user wants to use more than two MP-878D2/D8 Mini-PCI capture card in one system, User needs to be aware of that each 878 chip on the card needs to be set for different PCI Subsystem ID in EEPROM device. And please inform COMMELL to set different ID before purchase.

Also note , MP-878D2/D8 ONLY compatible with COMMELL's Motherboard

1.2 <Hardware requirement>

- I. Intel Pentium III 1.0 GHz or above (The CPU speed depends on the video Frame rate, channels and resolution)
- II. 256 MB RAM or above
- III. Free Mini-PCI slot

1.3 <Software requirement>

Microsoft Windows 2000/XP with DirectX 9.0 or above

1.4 <Dimensions>

44.6 x 59.5 mm (Mini-PCI Type-III B)

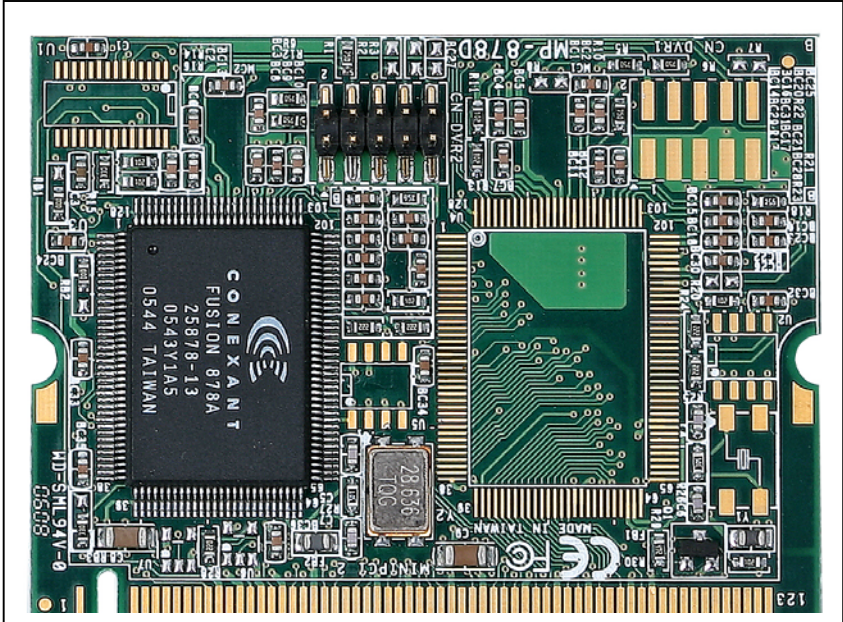


Figure 1.2

1.5 <Hardware Interface >

Connector: **CN_DVR2**

Type: onboard 2 x 5-pin header, pitch=2.0mm

Pin	Description	Pin	Description
1	Ground	2	COMP11
3	Ground	4	COMP12
5	Ground	6	C1
7	Ground	8	COMP10
9	Ground	10	COMP13

Connector: **CN_DVR1**

Type: onboard 2 x 5-pin header, pitch=2.0mm

Pin	Description	Pin	Description
1	Ground	2	COMP21
3	Ground	4	COMP22
5	Ground	6	C2
7	Ground	8	COMP20
9	Ground	10	COMP23

1.6 <Hardware installation >

1. Turn off your computer and unplug the power cord.
2. Remove the cover of your computer.
3. Touch the metal part on the surface of your computer to neutralize Any static electricity that might be on your body.
4. Place the MP-878D series into the Motherboard's Mini-PCI slot and connect Corresponding accessories to the MP-878D series.
5. Replace the cover of your computer chassis
6. Plug in the power cord and turn on the computer.

1.7 <Software installation >

When you completed the Hardware installation, the system will auto –detect
And a message pops up as following:



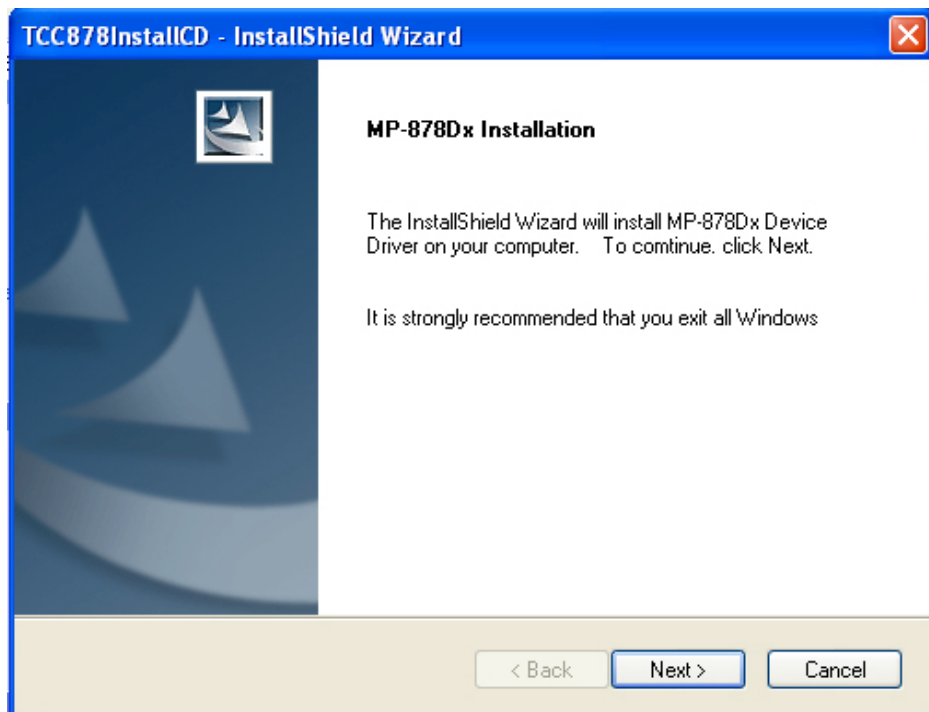
Please all select “Cancel”

Then, Insert the driver CD into your system's CD-ROM to Set up MP-878D series.

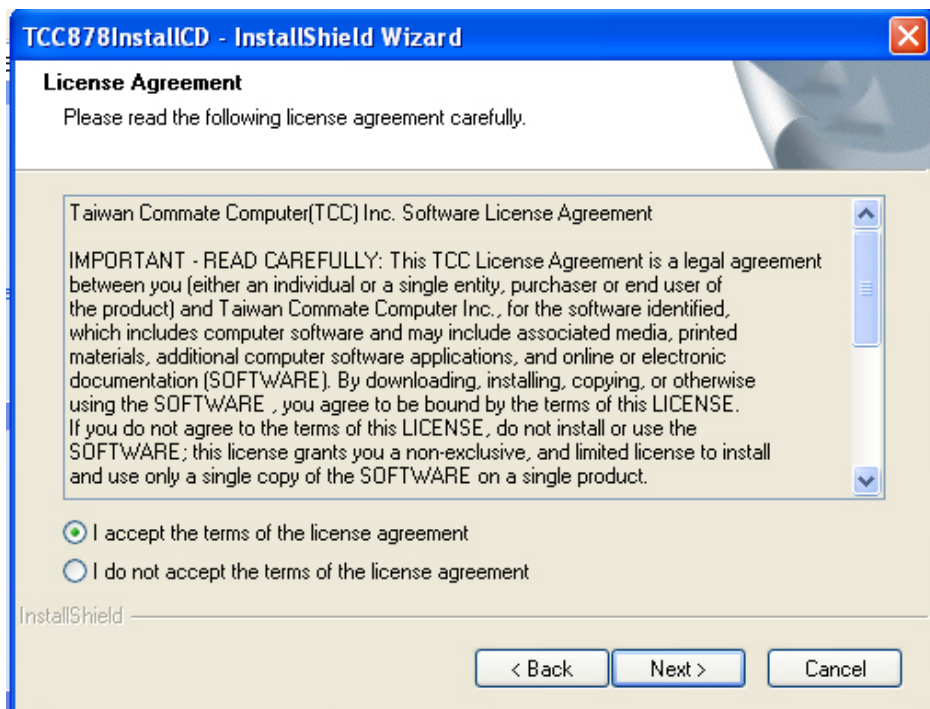
Run Setup.exe

(E:/Media/SINGLE.EXE_IMAGE/Disk Image/Disk/Setup.exe)

Please select "Next" to continue.



Please read the following License Agreement. Press the Page Down key to see the rest of agreement and click “Yes” to continue the installation.



Please fill in your User Name & Company Name. Then, click “Next “.

TCC878InstallCD - InstallShield Wizard

Customer Information
Please enter your information.

Please enter your name and the name of the company for which you work.

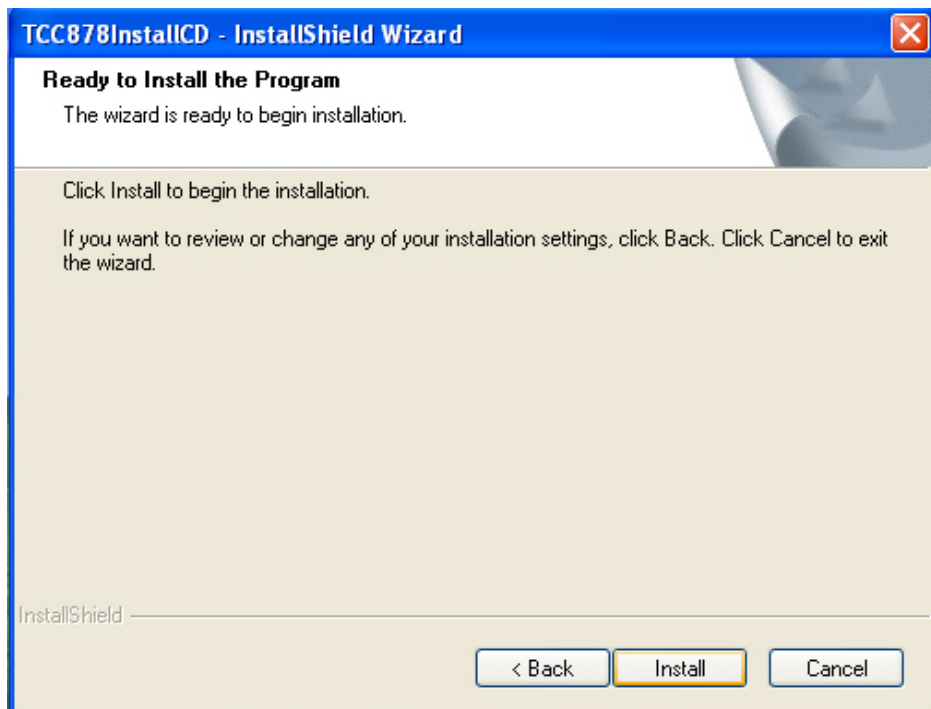
User Name:

Company Name:

InstallShield

< Back Next > Cancel

Please select Install in this page.



Click "Continue Anyway" when you see the following message.



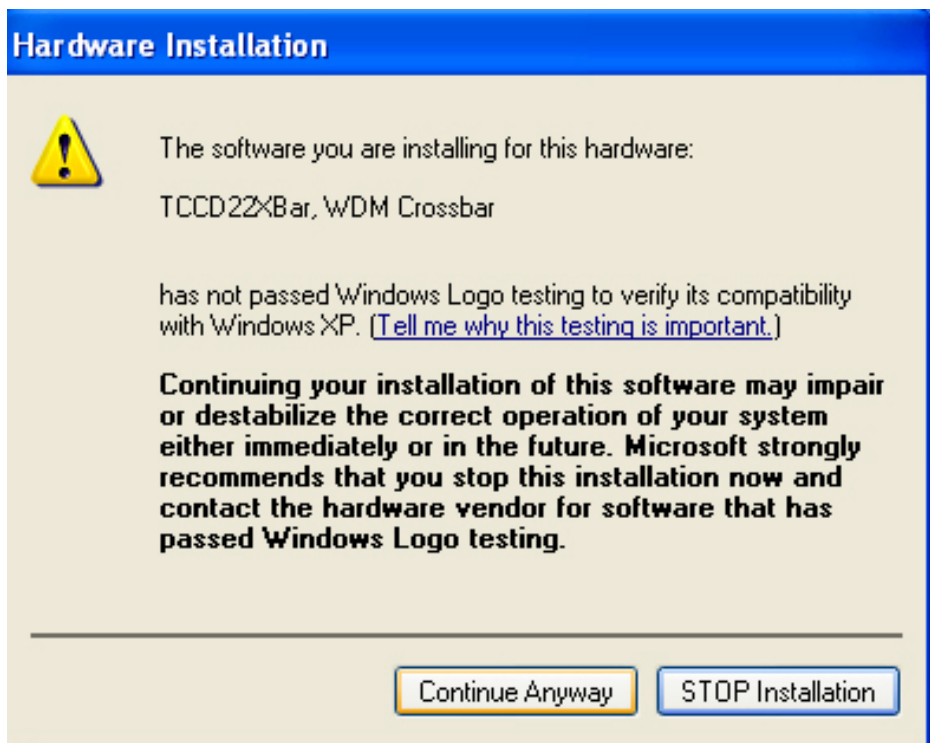
Click "Continue Anyway" when you see the following message.




Click "Continue Anyway" when you see the following message.



Click "Continue Anyway" when you see the following message.



Hardware Installation

 The software you are installing for this hardware:
TCCD22XBar, WDM Crossbar

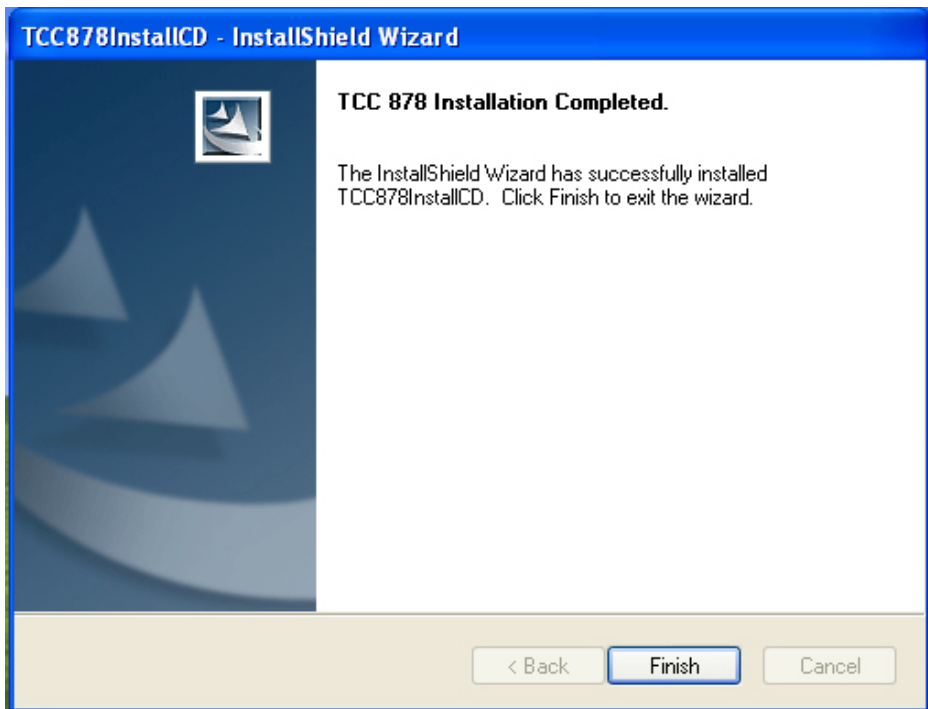
has not passed Windows Logo testing to verify its compatibility with Windows XP. ([Tell me why this testing is important.](#))

Continuing your installation of this software may impair or destabilize the correct operation of your system either immediately or in the future. Microsoft strongly recommends that you stop this installation now and contact the hardware vendor for software that has passed Windows Logo testing.

Click "Continue Anyway" when you see the following message.



When the following message appears, click “Finish” to complete the installation and restart Windows or your computer.



1.8 <Sample Program>

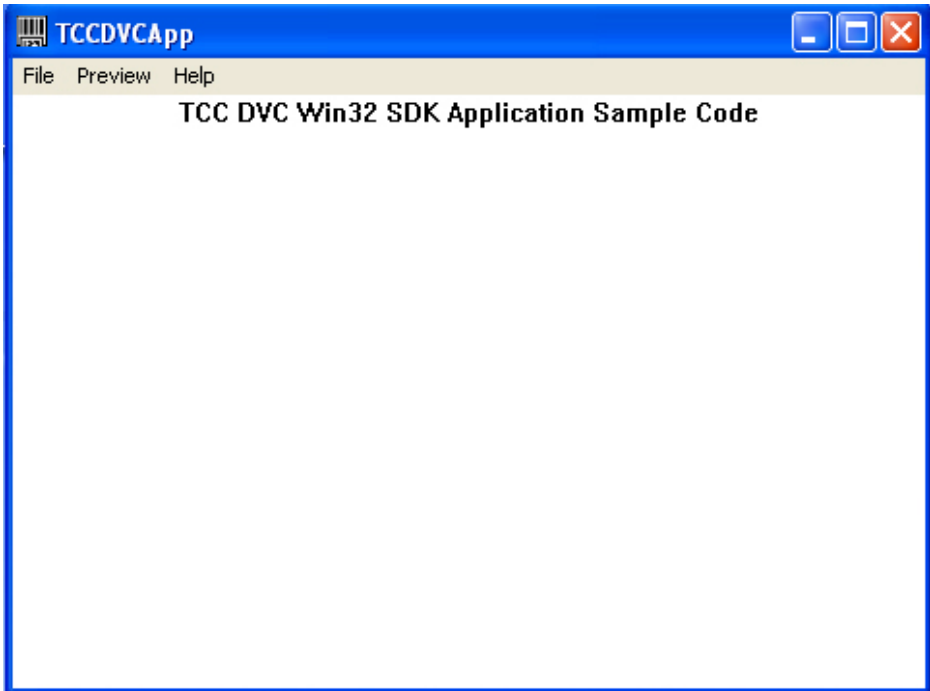
When you completed hardware & software installation, you can use COMMELL “TCCVDCApp” sample program to test.

You can find TCCDVCApp.exe on desktop.

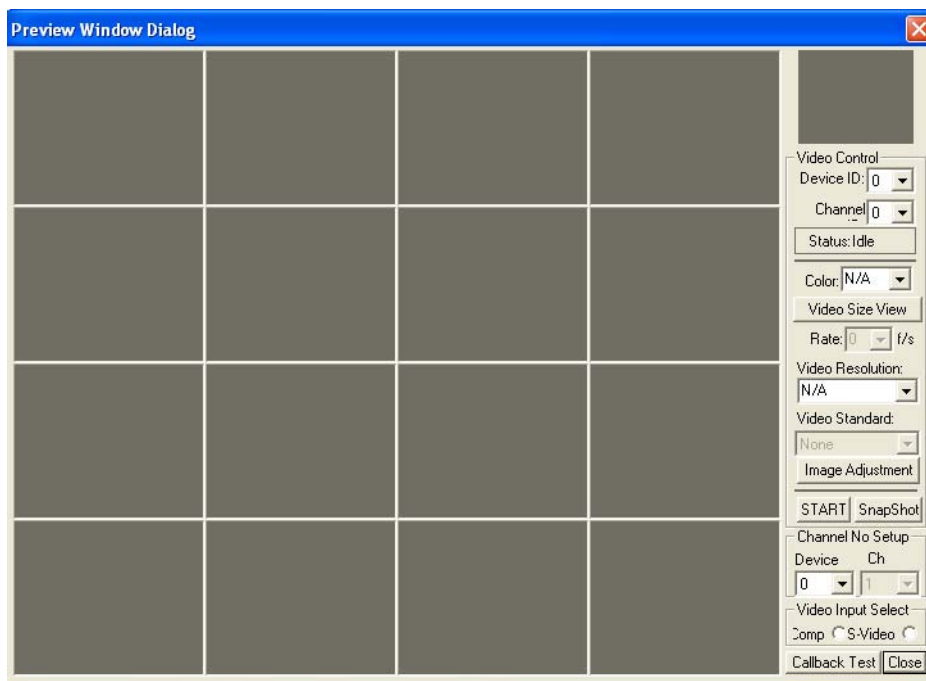


Please double –click “ TCCDVCApp.exep , It'll pops up as following.

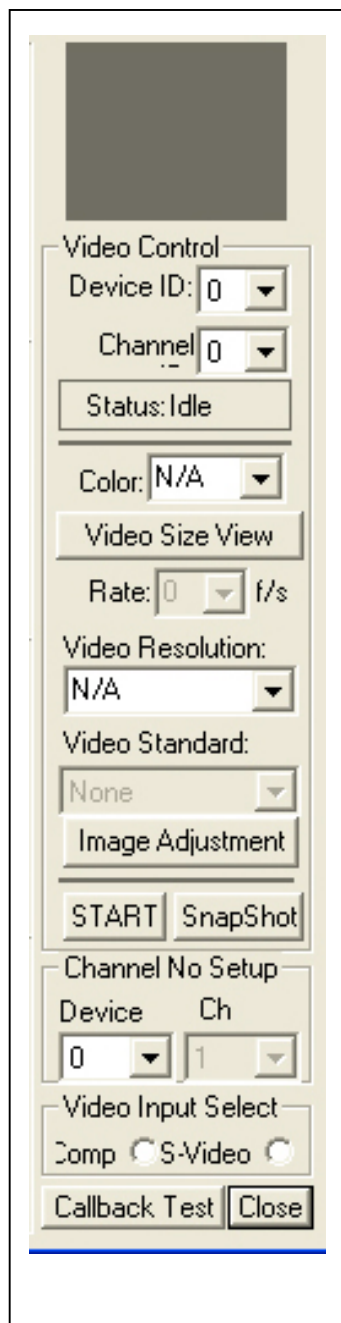
Then Please Push “Preview” on the left-upper Menu.



You'll get the program interface as following.



Explanation of Sample program function



Device ID:

It is mean BT878I Chipset.

Channel ID:

Support Video input per device.

Snapshot:

Catch the image on working channel.

Callback Test:

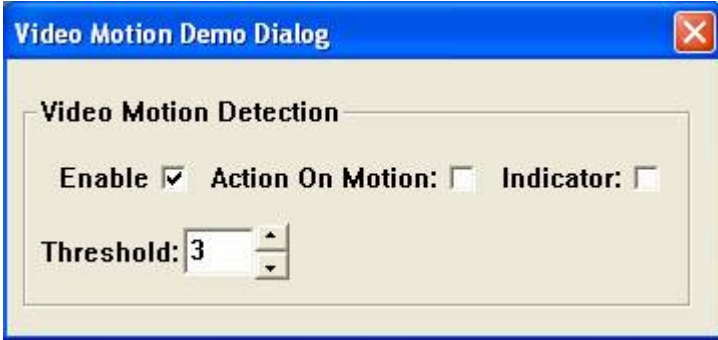
Catch the series image on working channel

Note:

Every channel is work separately, when you want to change any setting, please stop all channels which working.

<Video Motion>

Please choose “Video Motion”, then you can see program interface as following.



Enable:

If user “check” this box, it will enable video motion detection.

Action On Motion:

If this box is checked, the registered call back function will be executed, when video motion is been detected. The call back function needs to be registered during application initialization.

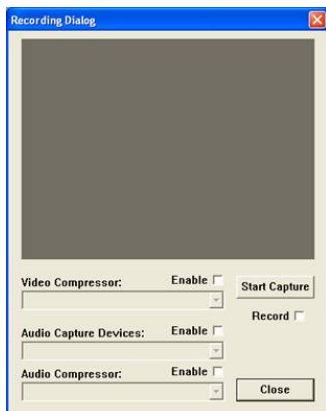
Indicator:

If this box is checked, it will show red spots as an motion indication, when the video motion is been detected.

Threshold:

Select motion detection sensitivity level, the number smaller, the sensitivity stronger.

<Recording Dialog> RESERVE!! No Function at the moment



Video Compressor:

Enable video compressor link, the list box window will list all video compressor components in the system. The user can select its own video compressor from the list, if user has installed own video compressor.

Audio Capture Devices:

Enable audio capture device link, the list box window will list all audio capture device in the system. The user can select one of audio device from the list.

Audio Compressor:

Enable audio compressor link, the list box window will list all audio compressor components in the system. The user can select its own audio compressor from the list, if user has installed own audio compressor.

Start Capture Button:

Press the button, the test program will start to run, user will see real time video on the preview window.

Record:

User check this, it will start to record the video.

1.9 <How to Get the video> (Based on MP-878D /D2 /D4 /D8) :

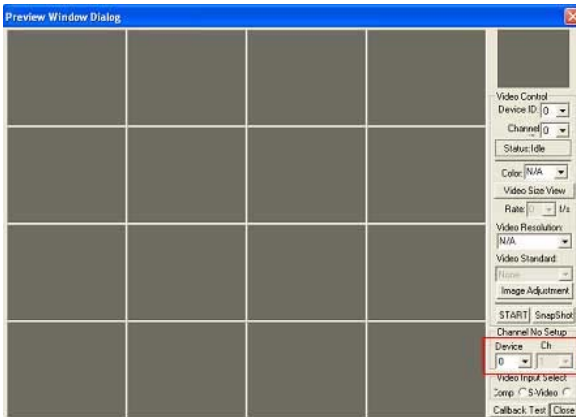
For example to get 1 video input (MP-878D) / 4 video input (MP-878D4)

1. Set Video input channel / per chip :

Device : Select 0 (Mean 1st BT878 chip ID)

Ch : Select 1 (Mean 1 x Video input for MP-878D)

Ch : Select 4 (Mean 4 x Video input for MP-878D4)



2. Video Input Source Select :

Select Comp (Composite) or S-video for each channel



3. Video Control setting

Device ID : 0 (Mean first BT878 chip)

Channel : 0 (First channel - video input for MP-878D / MP-878D4)

Channel : 1 (2nd channel - video input for MP-878D4)

Channel : 2 (3rd channel - video input for MP-878D4)

Channel : 3 (4th channel - video input for MP-878D4)



4. Push Start , then you'll get the video .

Note : You'll need to push "Start" for each channel after Video Control setting



For example to get 2 **video input (MP-878D2)** / 8 video input (**MP-878D8**)

1. Set Video input channel / per chip :

Device : Select 0 (Mean 1st BT878 chip ID)

Ch : Select 1 (Mean 1 x Video input for MP-878D2)

Ch : Select 4 (Mean 4 x Video input for MP-878D8)

Device : Select 1 (Mean 2nd BT878 chip ID)

Ch : Select 1 (Mean 1 x Video input for MP-878D2)

Ch : Select 4 (Mean 4 x Video input for MP-878D8)



2. Video Input Source Select :

Select Comp (Composite) or S-video for each channel



3. Video Control setting

Device ID : 0 (Mean 1st BT878 chip)

Channel : 0 (First channel - video input for **MP-878D2** / **MP-878D8**)

Channel : 1 (2nd channel - video input for **MP-878D8**)

Channel : 2 (3rd channel - video input for **MP-878D8**)

Channel : 3 (4th channel - video input for **MP-878D8**)

Device ID : 1 (Mean 2nd BT878 chip)

Channel : 0 (**2nd** / 5th channel - video input for **MP-878D2** / **MP-878D8**)

Channel : 1 (6th channel - video input for **MP-878D8**)

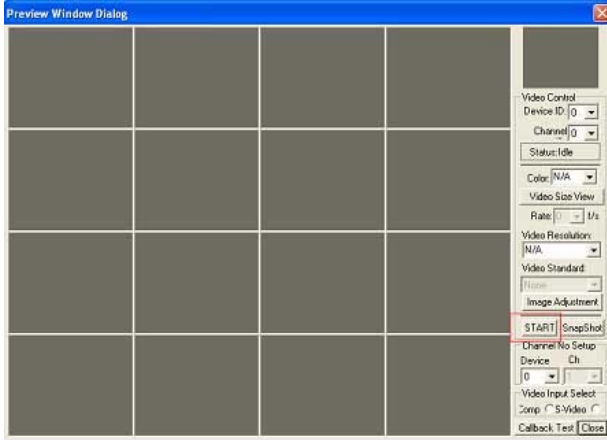
Channel : 2 (7th channel - video input for **MP-878D8**)

Channel : 3 (8th channel - video input for **MP-878D8**)



4. Push Start , then you'll get the video .

Note : You'll need to push "Start" for each channel after Video Control setting



Contact Information

Any advice or comment about our products and service, or anything we can help you please don't hesitate to contact with us. We will do our best to support you for your products, projects a business.

Taiwan Commate Computer Inc.

Address 19F, No. 94, Sec. 1, Shin Tai Wu Rd., Shi Chih
 Taipei Hsien, Taiwan

TEL +886-2-26963909

FAX +886-2-26963911

Website <http://www.commell.com.tw>

E-Mail info@commell.com.tw (General Information)

tech@commell.com.tw (Technical Support)

Commell is our trademark of industrial PC division