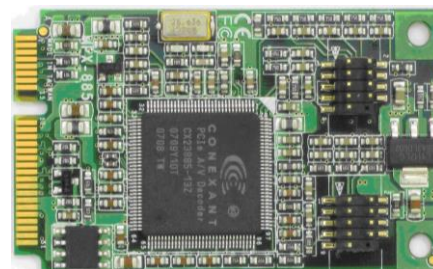


Mini-PCIe Video Capture Card

MPX-885

8 channel Video inputs ,
Support D1 & CIF resolution

Windows



Form Factor	PCI Express mini card	
Compression Format	Support Software compression card	
Video	Inputs	MPX-885 : 8 channel
	Connector Type	MPX-885 : BNC
	Display Rate	MPX-885 : Total 30 fps / D1 resolution
Audio	Inputs	4 channel
	Connector Type	RCA connector (Cable for optional)
OS Support	Windows XP ,7(32bit); Linux (Kernel 2.6.17)	
Software	Windows SDK (Directshow support) , Linux Driver	
Cable kit	1 x 10-pin header to D-sub 9 Cable & 1 x 4-Ch BNC Video input Cable Note : 8-ch video input cable is for option	
Option Cable kit	1 x 10-pin header to D-sub 9 Cable & 1 x 4-ch RCA audio input Cable 1 x 4-ch S-Video video input Cable 1 x 2-ch YPbPr & 2-ch Composite video input Cable 1 x 8-ch Composite video input Cable 1 x 8-ch BNC video input Cable	
Compliance	RoHS , CE , FCC	
Dimensions (L x W)	51mm x 30mm	

Ordering Code

MPX-885

8 channel Video inputs Mini-PCIe capture Card with SDK provided

For further product information please visit the website at <http://www.commell.com.tw>

Taiwan Commate Computer Inc.

19F, NO. 94, Sec. 1, Shin Tai Wu Rd., Hsi Chih, Taipei Shien,
Taiwan.

TEL: +886-2-26963909

FAX: +886-2-26963911

Website:www.commell.com.tw

E-mail:info@commell.com.tw



Stage For Your Success