

CMS-370S

Fanless Barebone Capture system

Assemble Guide & User's Manual



V1.0
2008/02/27

Copyright

Copyright 2005, all rights reserved. This document is copyrighted and all rights are reserved. The information in this document is subject to change without prior notice to make improvements to the products.

This document contains proprietary information and protected by copyright. No part of this document may be reproduced, copied, or translated in any form or any means without prior written permission of the manufacturer.

All trademarks and/or registered trademarks contains in this document are property of their respective owners.

Disclaimer

The company shall not be liable for any incidental or consequential damages resulting from the performance or use of this product.

The company does not issue a warranty of any kind, express or implied, including without limitation implied warranties of merchantability or fitness for a particular purpose.

The company has the right to revise the manual or include changes in the specifications of the product described within it at any time without notice and without obligation to notify any person of such revision or changes.

Trademark

All trademarks are the property of their respective holders.

Index

1. Packing List	4
2. Outlook	5
3. Hardware installation	6
4. Driver Installation	8
5. Sample program	12

1. Packing List:

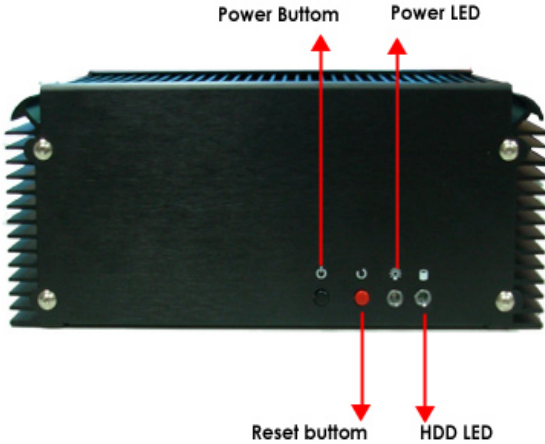
Please check the package content before you starting using the board.

Hardware:

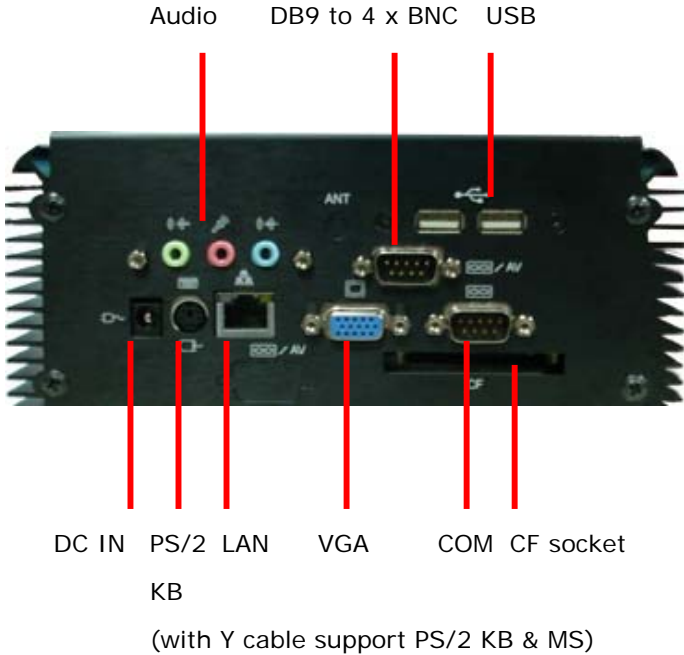
◆ Fanless Case	X 1
◆ LE-370CM6 Motherboard	X 1
◆ MP-6802 Mini-PCI capture card	X 1
◆ SPD-080-12 , 12V/80W adapter	X 1
◆ OALLES-BKU1NB , DB9 1 COM cable	X 1
◆ OALBNCE4 , DB9 to BNC*4 cable	X 1
◆ OALPJ-U10 Audio cable	X 1
◆ OALPS2/MK Keyboard/Mouse cable	X 1
◆ OALUSB-10 USB cable	X 1
◆ Screw Package	X 1
◆ Driver and Utility CD	X 1

2. Outlook:

Front IO

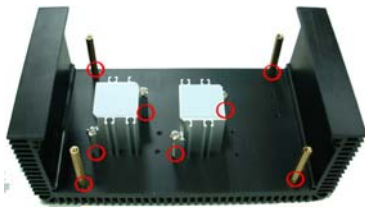


Rear IO

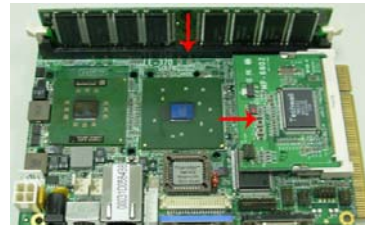


3. Hardware installation Guide:

3-1 Install Heatsink & Copper Pillar



3-2 Insert Memory & Mini-PCI card into MB



3-3 Lock Audio , USB and DB9 cable on the Rear plate



3-4 Install HDD on the bottom plate



3-5 Connect Audio , USB , DB9 cable with MB



3-6 Screw MB into Copper Pillar



3-7 Lock the Rear plate



3-8 Connect HDD cable and Power / Reset button



3-9 lock the bottom plate



3-10 Assemble Front plate and lock



3-11 Completed



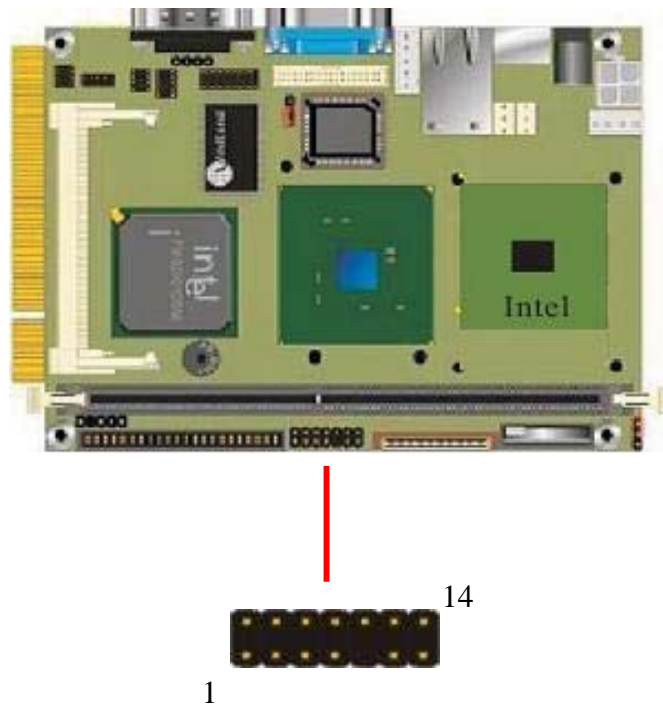
Note :

The **JFRNT** provides front control panel of the board, such as power button, reset and beeper, etc. Please check well before you connecting the cables on the chassis.

Connector: **JFRNT**

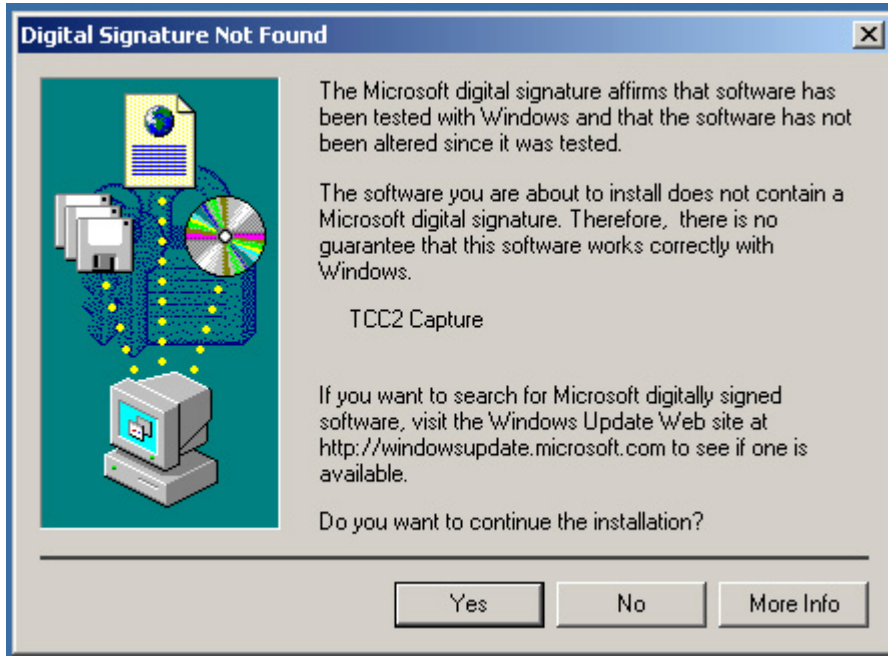
Type: onboard 14-pin (2 x 7) 2.54-pitch header

Function	Signal	PIN		Signal	Function
IDE LED	VCC	1	2	VCC	Power LED
	Active	3	4	N/C	
Reset	Reset	5	6	GND	Speaker
	GND	7	8	VCC	
N/C		9	10	N/C	
Power Button	PWRBT	11	12	N/C	
	5VSB	13	14	SPKIN	



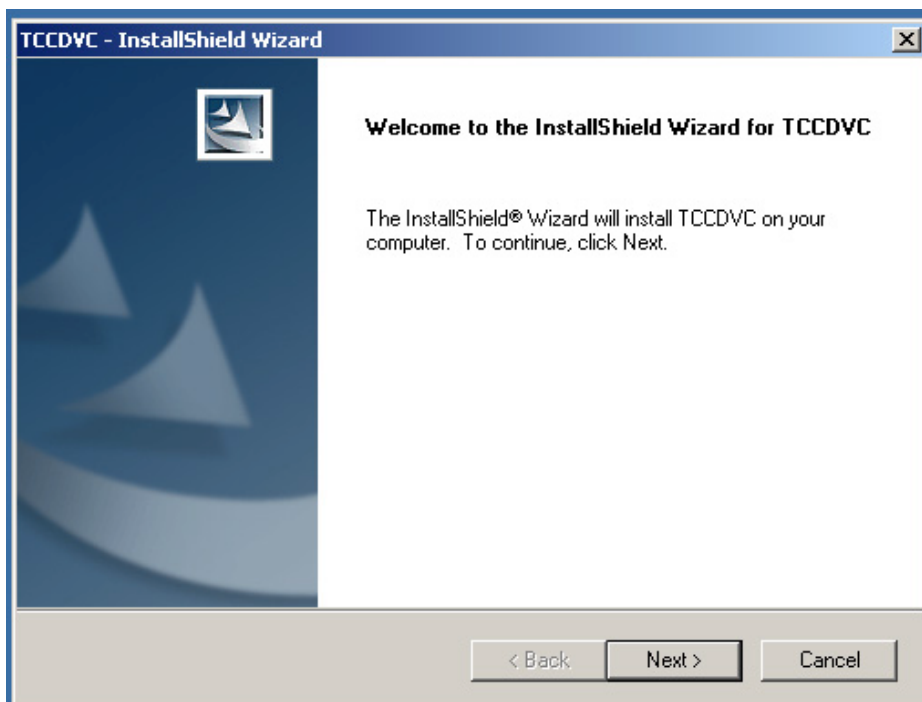
4. Driver Installation:

4-1 When you completed the Hardware installation, the system will auto –detect And a message pops up as following:



Please select " No ".

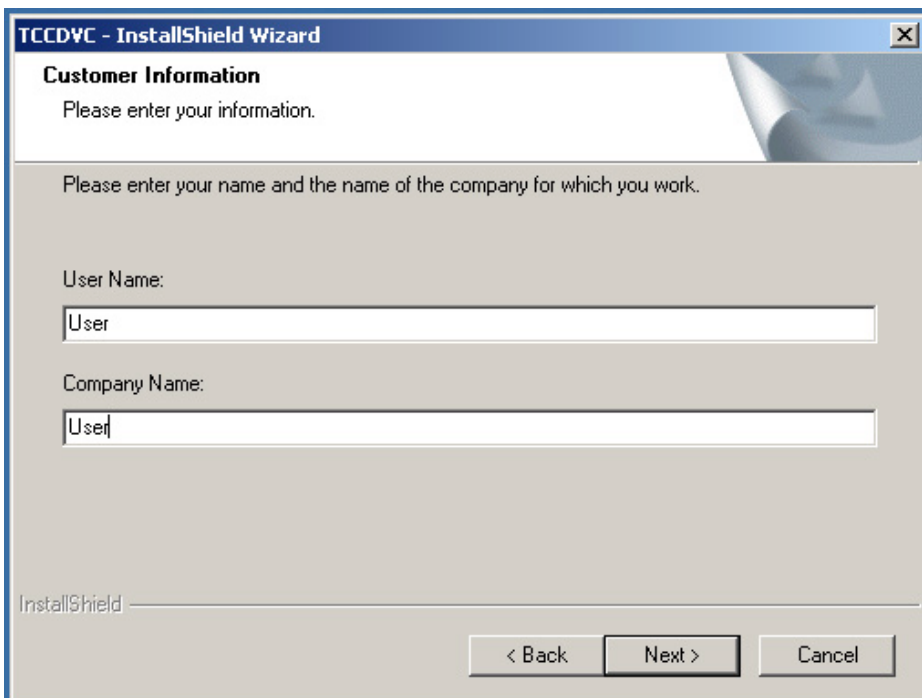
4-2 Then, Insert the driver CD into your system's CD-ROM to Set up MP-6802. Run Setup.exe
Please select " Next " to continue.



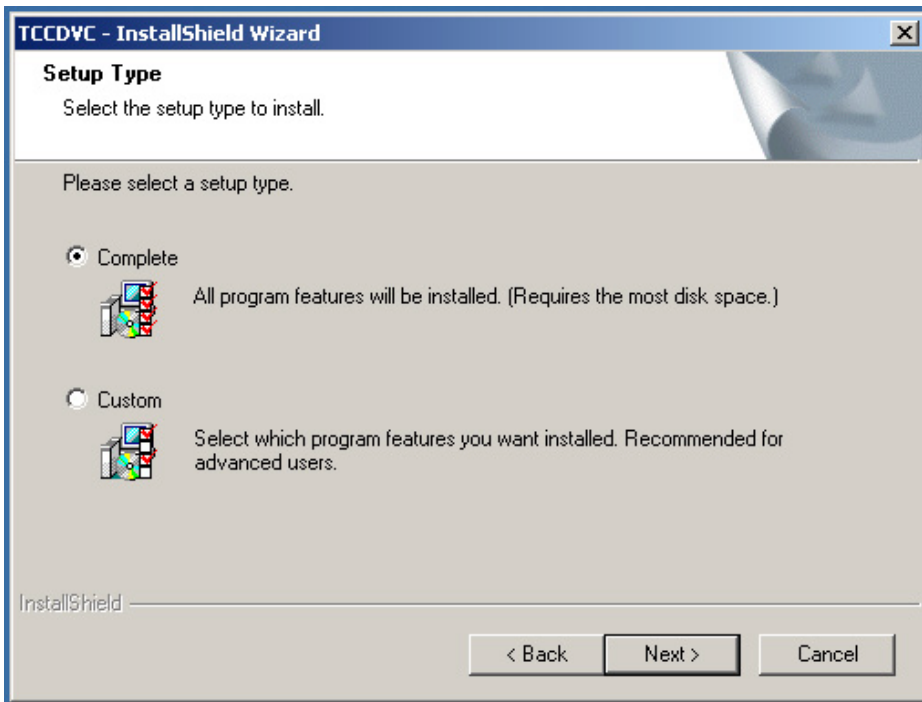
4-3 Please read the following License Agreement. Press the Page Down key to see the rest of agreement and click “ Yes “ to continue the installation.



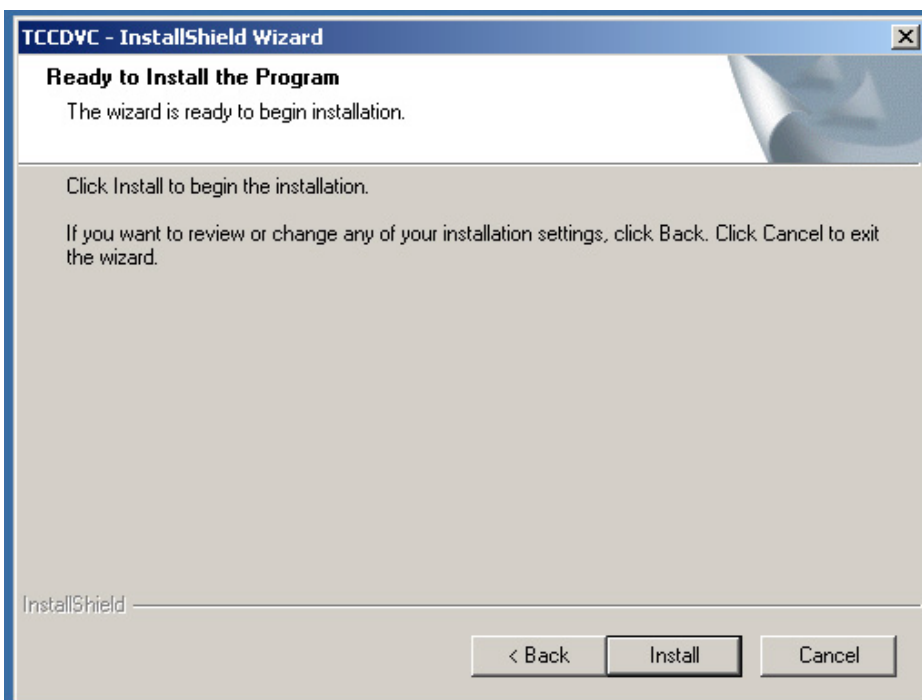
4-4 Please fill in your User Name & Company Name. Then, click “ Next “.



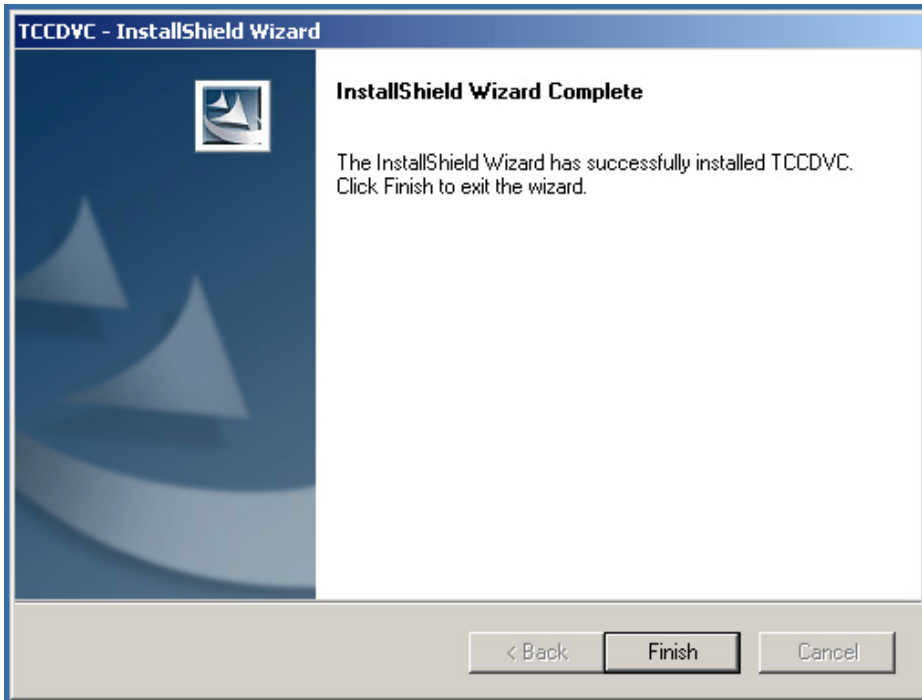
4-5 Please select a setup type in this page then click “ Next “.



4-6 Click “ Install “ when you see the following message.



4-7 When the following message appears, click “ Finish “ to complete the installation and restart Windows or your computer.



4-8 After installation, all the driver is automatically located at the following place:
C:\Program Files\Commate\TCCDCV\Driver and Inf

5. Sample Program:

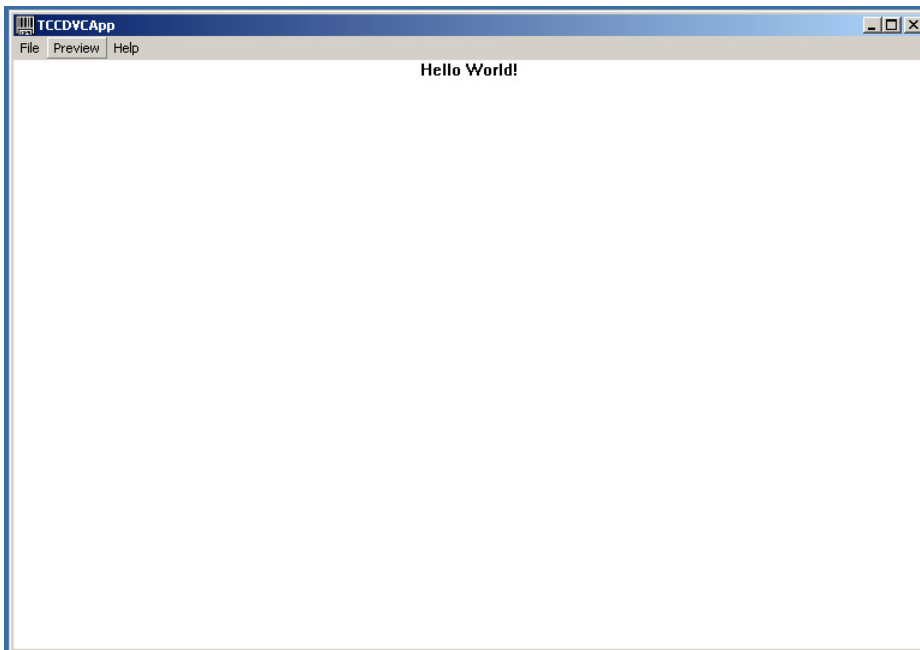
5-1 When you completed hardware & software installation, you can use COMMELL “TCCVDCApp” sample program to test.

You can find TCCDVCApp.exe on desktop.



Please double-click “ TCCDVCApp.exe , It'll pops up as following.

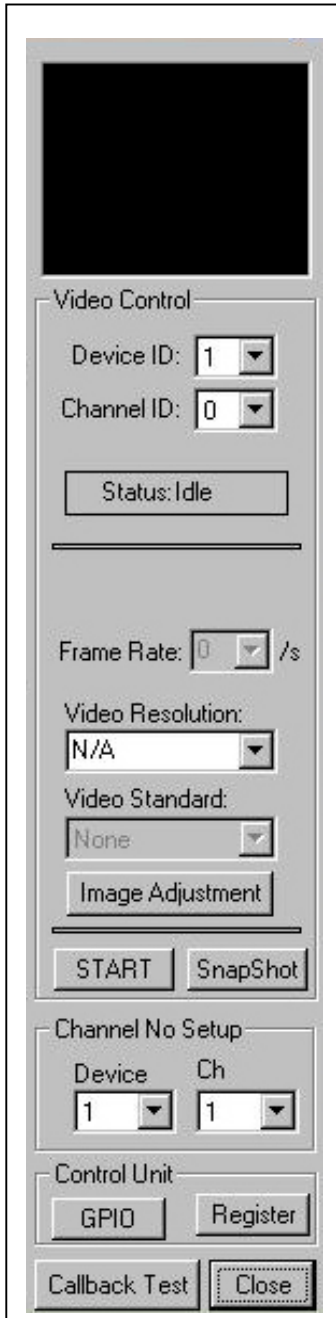
Then Please Push “ Preview “ on the left-upper Menu.



You 'll get the program interface as following.



Explanation of Sample program function



Device ID:

It is mean Techwell Chipset. One MP-6802 have 1 chipset, so, you only can select 0

Channel ID:

Per chip can support 4 Video input, So, You can select 0/1/2/3 for Video input.

But you'll need to set "Channel No Setup" first.

Channel No Setup:

Please set how many video-In channels per Device. Per device is allow 4 channels.

Snapshot:

Catch the image on working channel.

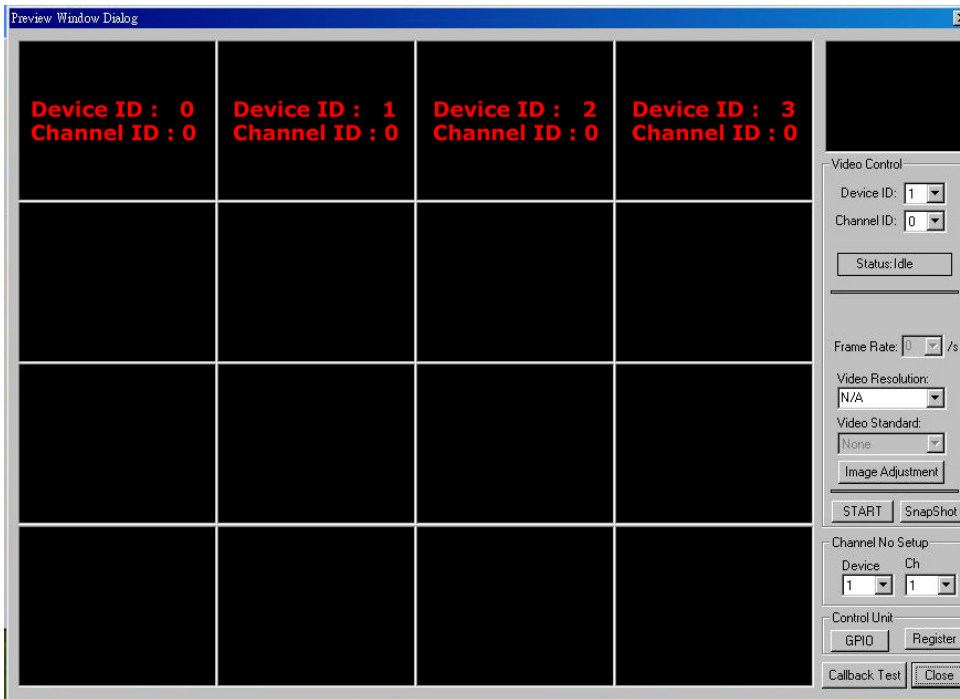
Callback Test:

Catch the series image on working channel

Note:

Every channel is work separately, when you want to change any setting, please stop all channels which working.

Device ID & Channel ID sample



Any advice or comment about our products and service, or anything we can help you please don't hesitate to contact with us. We will do our best to support you for your products, projects a business.

Taiwan Commate Computer Inc.

Address 8F, No. 94, Sec. 1, Shin Tai Wu Rd., Shi Chih
Taipei Hsien, Taiwan

TEL +886-2-26963909

FAX +886-2-26963911

Website <http://www.commell.com.tw>

E-Mail info@commell.com.tw (General Information)
tech@commell.com.tw (Technical Support)

Commell is a trademark of Taiwan Commate Computer Inc.